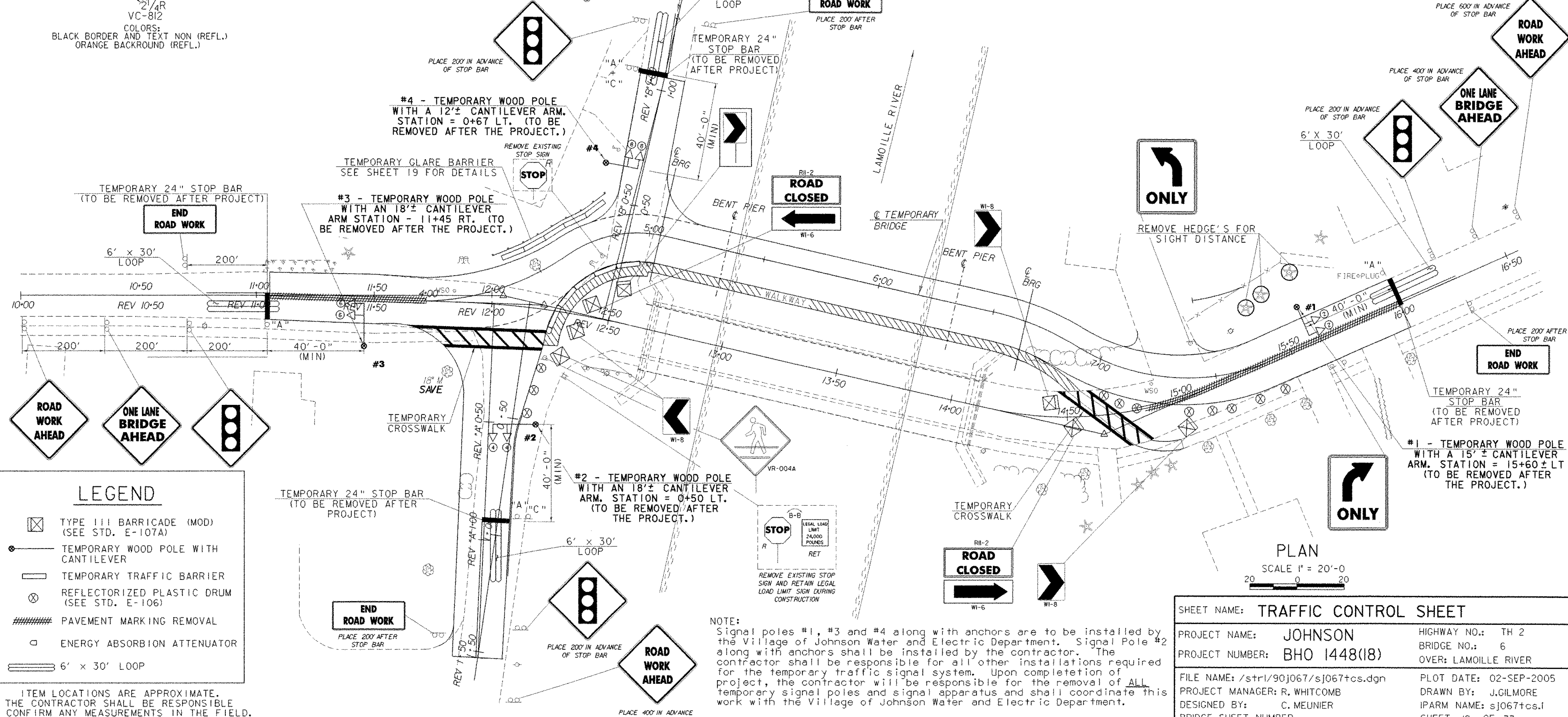


TEMPORARY DETOUR TYPICAL  
NTS



**LEGEND**

- ☒ TYPE III BARRICADE (MOD) (SEE STD. E-107A)
- TEMPORARY WOOD POLE WITH CANTILEVER
- ▬ TEMPORARY TRAFFIC BARRIER
- ⊗ REFLECTORIZED PLASTIC DRUM (SEE STD. E-106)
- ▨ PAVEMENT MARKING REMOVAL
- ENERGY ABSORPTION ATTENUATOR
- ▬ 6' x 30' LOOP

ITEM LOCATIONS ARE APPROXIMATE. THE CONTRACTOR SHALL BE RESPONSIBLE TO CONFIRM ANY MEASUREMENTS IN THE FIELD.

**NOTE:**  
Signal poles #1, #3 and #4 along with anchors are to be installed by the Village of Johnson Water and Electric Department. Signal Pole #2 along with anchors shall be installed by the contractor. The contractor shall be responsible for all other installations required for the temporary traffic signal system. Upon completion of project, the contractor will be responsible for the removal of ALL temporary signal poles and signal apparatus and shall coordinate this work with the Village of Johnson Water and Electric Department.

SHEET NAME: TRAFFIC CONTROL SHEET		
PROJECT NAME: JOHNSON	HIGHWAY NO.: TH 2	
PROJECT NUMBER: BHO 1448(18)	BRIDGE NO.: 6	OVER: LAMOUILLE RIVER
FILE NAME: /str/190j067/sj067+cs.dgn	PLOT DATE: 02-SEP-2005	
PROJECT MANAGER: R. WHITCOMB	DRAWN BY: J.GILMORE	
DESIGNED BY: C. MEUNIER	IPARM NAME: sj067+cs.1	
BRIDGE SHEET NUMBER:	SHEET 12 OF 73	