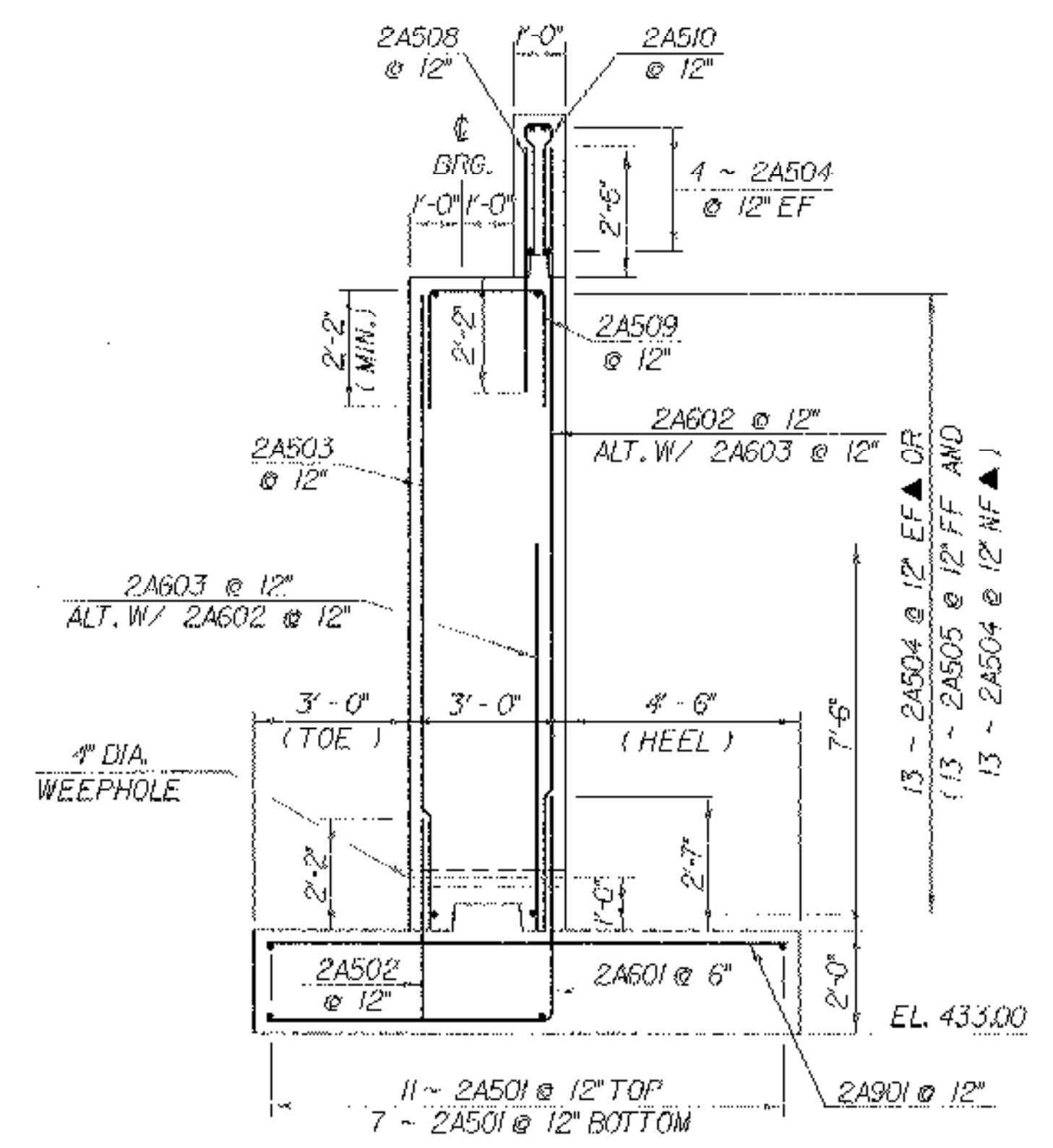
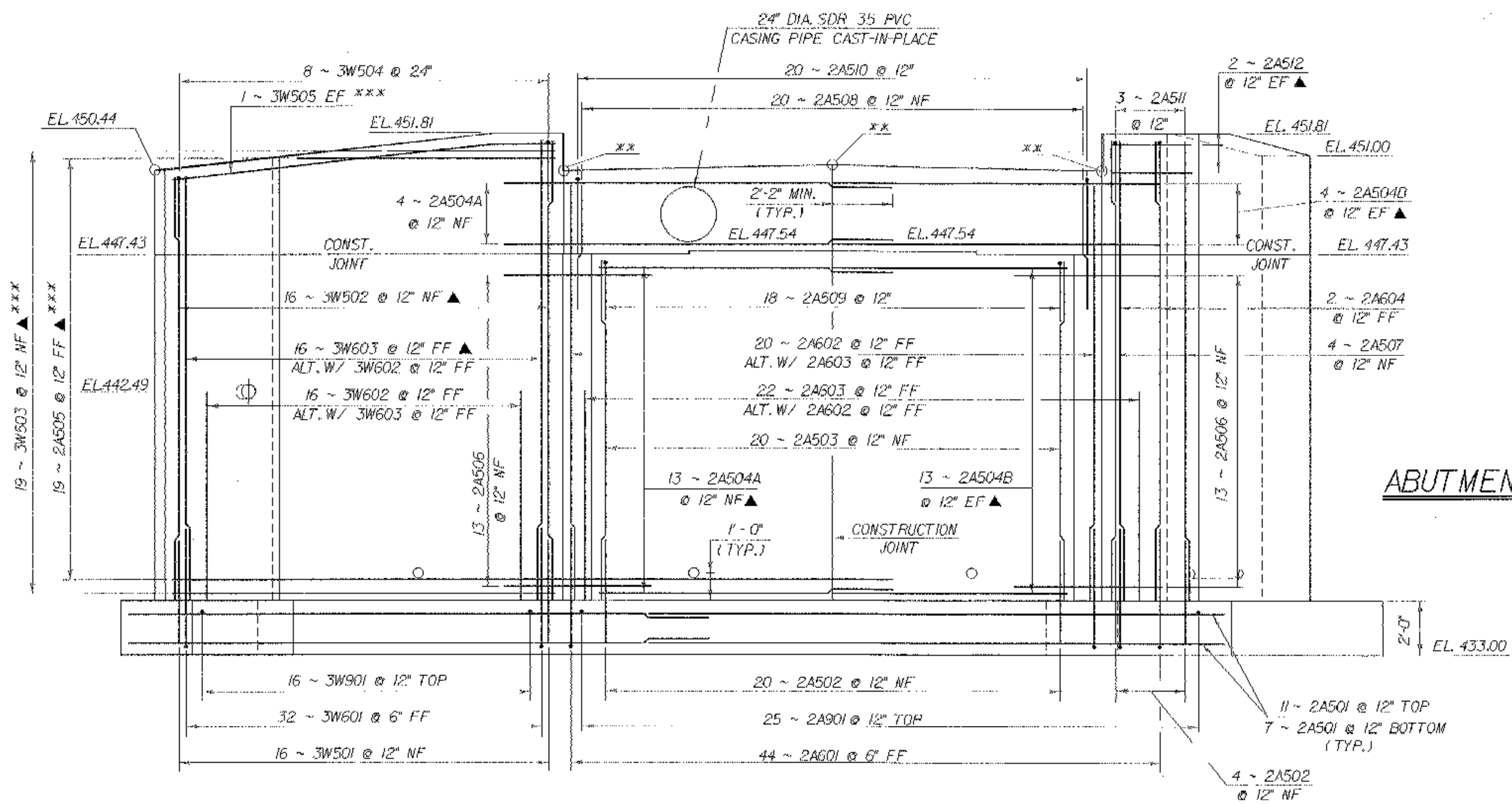


**ABUTMENT NO. 2 PLAN**  
SCALE: 3/8" = 1'-0"



**ABUTMENT NO. 2**  
SCALE: 3/8" = 1'-0"



**ABUTMENT NO. 2 & WINGWALL NO. 3 ELEVATION**  
SCALE: 3/8" = 1'-0"

**NOTE:**  
 NF = NEAR FACE  
 FF = FAR FACE  
 EF = EACH FACE  
 ▲ = CUT TO FIT IN FIELD  
 3" CLR. UNLESS OTHERWISE SPECIFIED ON THE PLANS.

- \* TAPER AND BEND WINGWALL NO. 3 TO MATCH END OF EXISTING CONCRETE RETAINING WALL.
- \*\* THESE ELEVATIONS ARE TO BE DETERMINED AFTER STRUCTURAL STEEL IS ERECTED.
- \*\*\* BARS SHALL BE BENT TO FIT IN FIELD.

<b>STATE OF VERMONT AGENCY OF TRANSPORTATION</b>			
Town Of	MIDDLEBURY	Bridge No.	20
Highway No.	T.H. 33	Log Sta.	
<b>T.H. 33 OVER THE MIDDLEBURY RIVER</b>			
<b>ABUTMENT NO. 2 DETAILS</b>			
Designed By	R.W.HITCOMB	Drawn By	K.CHISHOLM
Checked By	Date	Project Manager	
T. SUMNER	7/00	R.R.WHITCOMB	Date 8/00
PROJECT	MIDDLEBURY	PROJECT NO.	BRZ 1445 (19)
I.G.C. info.	90106\Structures\sj06lab2j		sj06lab2j
Bridge Sheet No.		Sheet	30 of 55