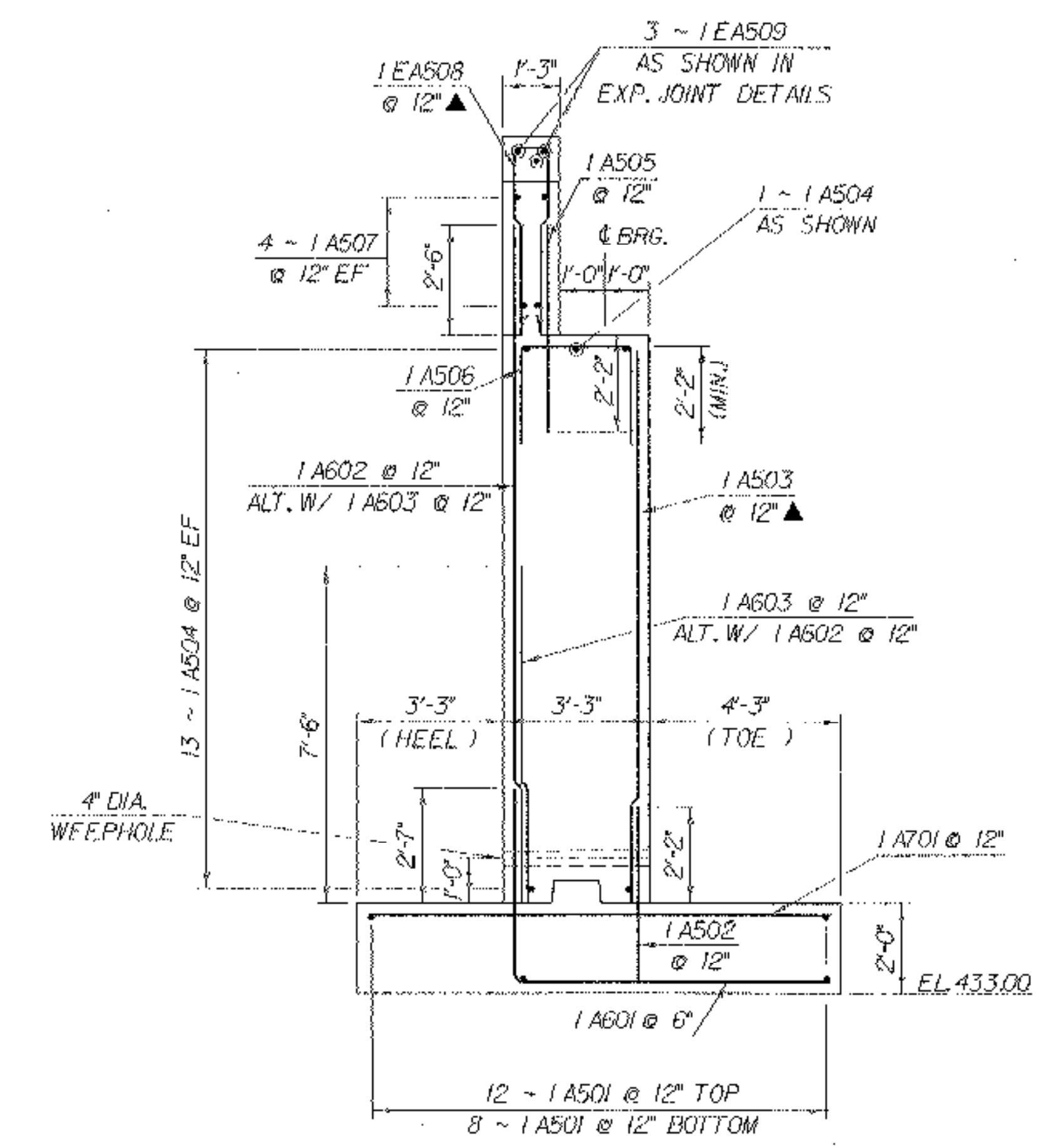


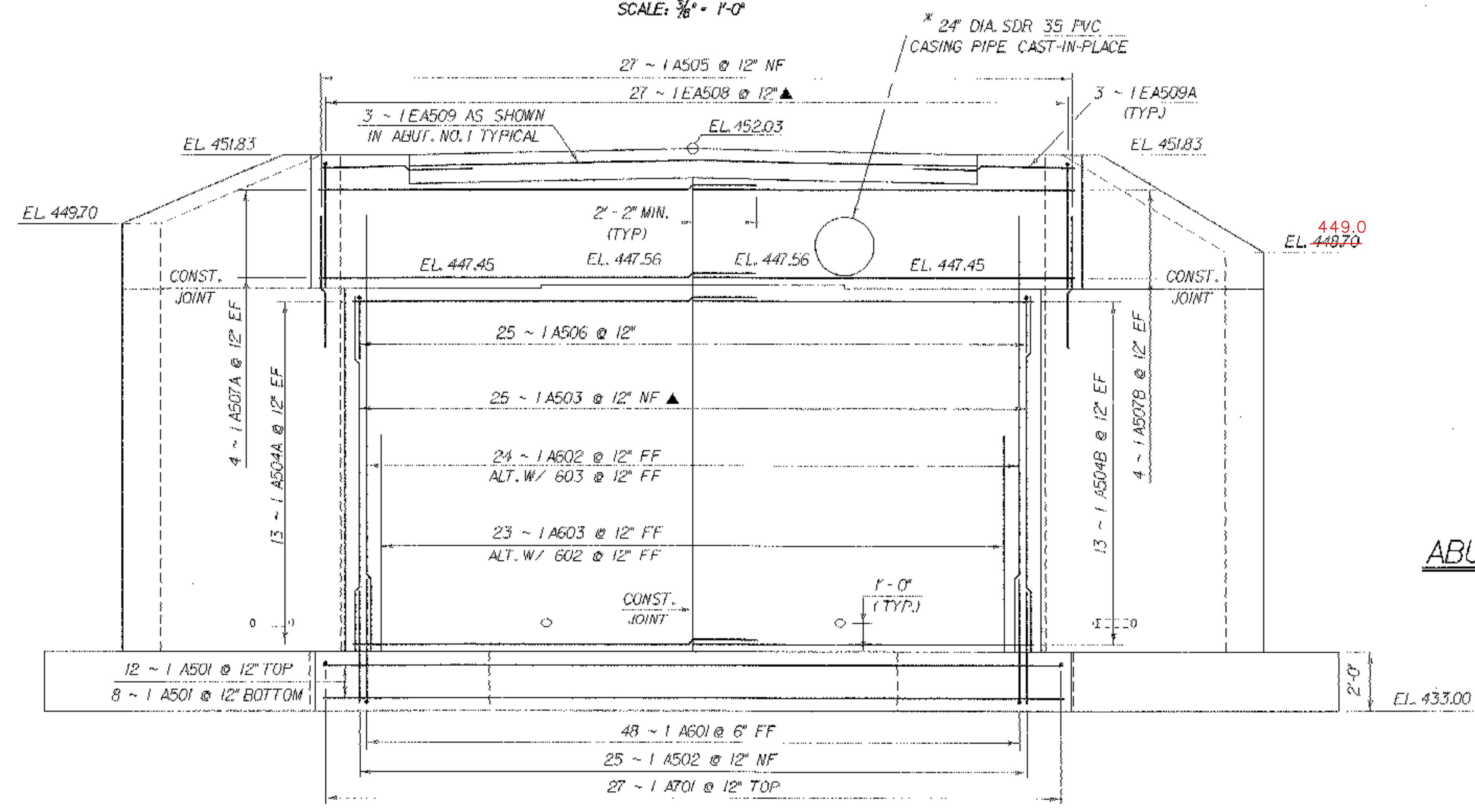
**ABUTMENT NO. 1 PLAN**

SCALE: 3/8" = 1'-0"



**ABUTMENT NO. 1**

SCALE: 3/8" = 1'-0"



**ABUTMENT NO. 1 ELEVATION**

SCALE: 3/8" = 1'-0"

- \* 1. EXACT LOCATION OF 24" DIA. SDR 35 PVC CASING PIPE TO BE DETERMINED IN THE FIELD BY THE RESIDENT ENGINEER AND THE CONTRACTOR. (SEE WATERLINE DETAILS.)
- 2. THE CASING PIPE SHALL BE PAID FOR UNDER ITEM 629.60, "WATER MAIN ON BRIDGE".

**STATE OF VERMONT  
AGENCY OF TRANSPORTATION**

Town Of	MIDDLEBURY	Bridge No.	20
Highway No.	T.H. 33	Loc. Sta. Surv. Sta.	
<b>T.H. 33 OVER THE MIDDLEBURY RIVER</b>			
<b>ABUTMENT NO. 1 DETAILS</b>			
Designed By	R. WHITCOMB	Drawn By	K. CHISHOLM
Checked By	T. SUMNER	Date	7/00
		Project Manager	R.R. WHITCOMB Date 8/00
PROJECT	MIDDLEBURY	PROJECT NO.	BRZ 1445 (19)
I.G.C. Info.	90106AStructures\ssj06lab.dgn		ssj06lab.dgn
Bridge Sheet No.		Sheet	29 of 55

**NOTE:**  
 NF - NEAR FACE  
 FF - FAR FACE  
 EF - EACH FACE  
 ▲ - CUT TO FIT IN FIELD  
 3" CLR. UNLESS OTHERWISE SPECIFIED ON THE PLANS.