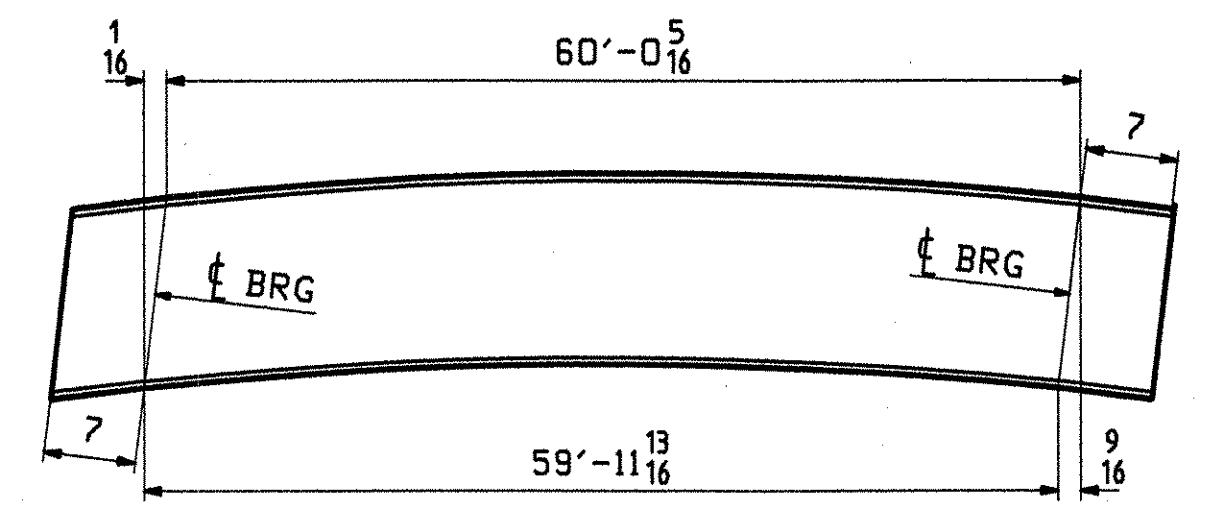


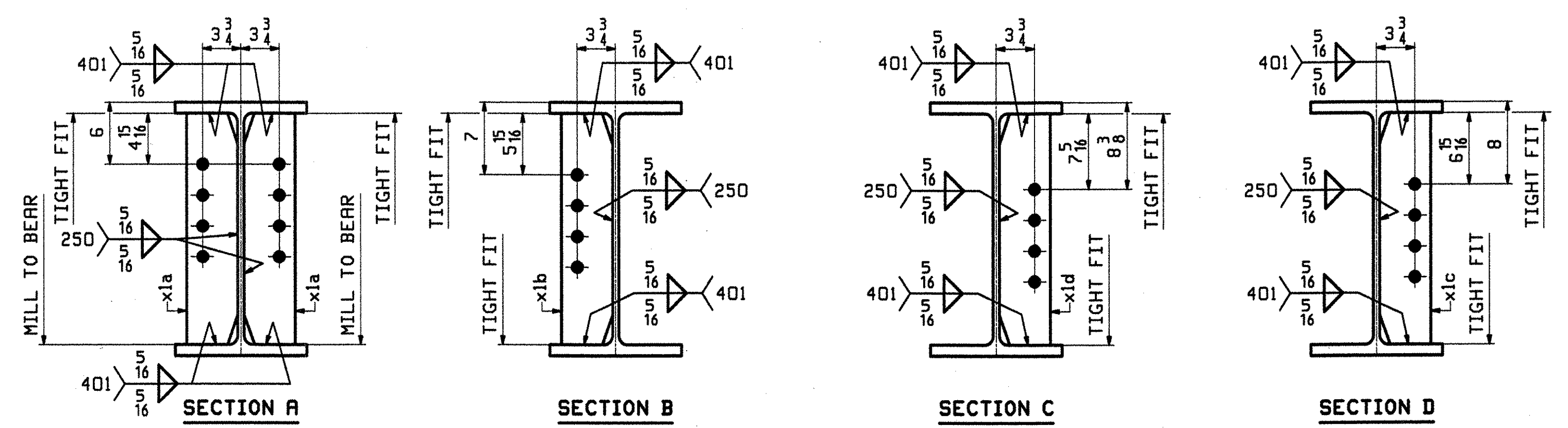
ONE - STRINGER - 2S2 } ALIKE EXCEPT  
 ONE - STRINGER - 2S3 } FOR MARK

RBM INFO		SHIP				BILL OF MATERIAL		JOB NO.	DRAWING NO.	REV.
								366	2	
PAGE LINE	MARK	QTY	MARK	MATERIAL	LENGTH FT	INCHES	REMARKS	WT	PROCUREMENT NOTES	
	2S2	1		STRINGER					906	
	2S3	1		STRINGER					906	
1	B	2	wa	W 24x146	61	2 3/8	(M270-50WT2) (H2-3)			
1	E	8	x1a	PL 1/2x5	1	10 5/8	MIE			
1	E	4	x1b	PL 1/2x5	1	10 5/8				
1	E	2	x1c	PL 1/2x5	1	10 5/8				
1	E	2	x1d	PL 1/2x5	1	10 5/8				

RECEIVED  
 CHK'D BY LSS OK'D BY R54  
 APR 30 2008  
 RESUBMIT APPROVED  
 BY CPW DATE 5/7/08



ORIENTATION DIAGRAM - STRINGERS 2S2 & 2S3  
 FOR CAMBER SEE DWG W51



NOTES:  
 FOR STRINGER STANDARD DETAILS SEE DRAWING XI.  
 FOR CAMBER DIAGRAMS SEE DRAWING W51.  
 FOR GENERAL NOTES & WELD PROCEDURES SEE DRAWING GNI.  
 H2-3 DENOTES MATERIAL SUBJECT TO CHARPY V-NOTCH TESTING.

REV.	DATE	REMARKS	DWN	CHK	APVL	SHOP
0					4-22-08	
MATERIAL:		SURFACE PREP. & PAINT:		HOLES:		SHOP BOLTS:
M270-50W		AS NOTED ON GNI		15 16 Ø		NONE
DESCRIPTION: STRINGERS - 2S2 & 2S3						
CASCO BAY STEEL STRUCTURES, INC. 75 SPRING HILL ROAD SACO, MAINE 04072 PHONE (207) 282-7360 FAX. (207) 282-1179						
STRUCTURE: TH 8 OVER MILL BROOK BRIDGE NO. B25 COUNTY OF WINDSOR			DRAWN: JTB	DATE: 04/10		
			CHKD: JF	DATE: 04/18		
LOCATION: TOWN OF READING			JOB NO.	DWG NO.		
PROJ NO. BRZ 1444(23)			366	2		
CUSTOMER: VERMONT A.O.T.				REV.		

JTB 541 Rev 18 02/07/04 EDT 2008 - 2/27/02 1 Rev 0