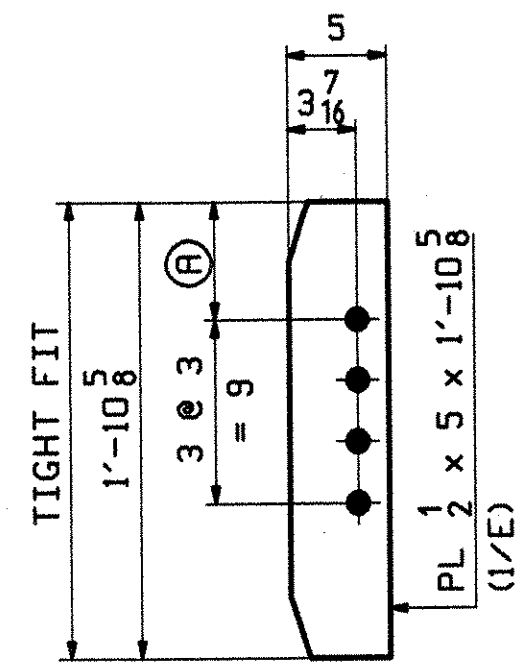
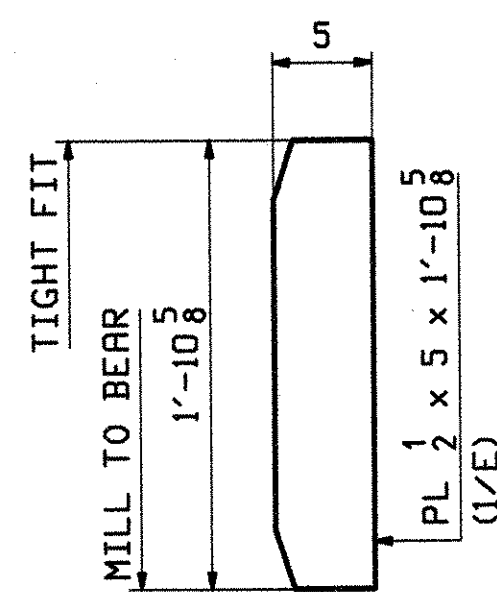


12 ~ x1a  
END DIAPHR CONN.

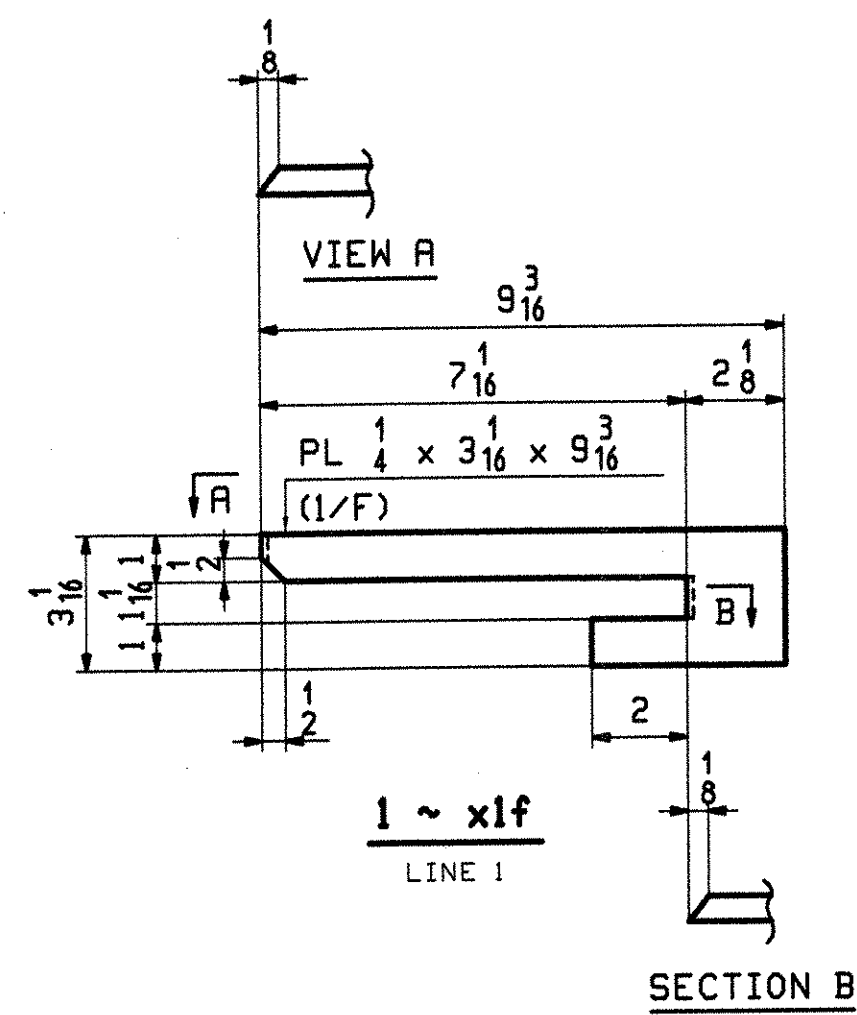


MARK "A"  
INT DIAPHR CONN.

MARK "A"	QTY	Ⓟ	
x1b	6	5 15/16	LOW END
x1c	4	6 15/16	DROPS 3/8 - 1/8
x1d	2	7 5/16	DROPS 3/8 & 1/4

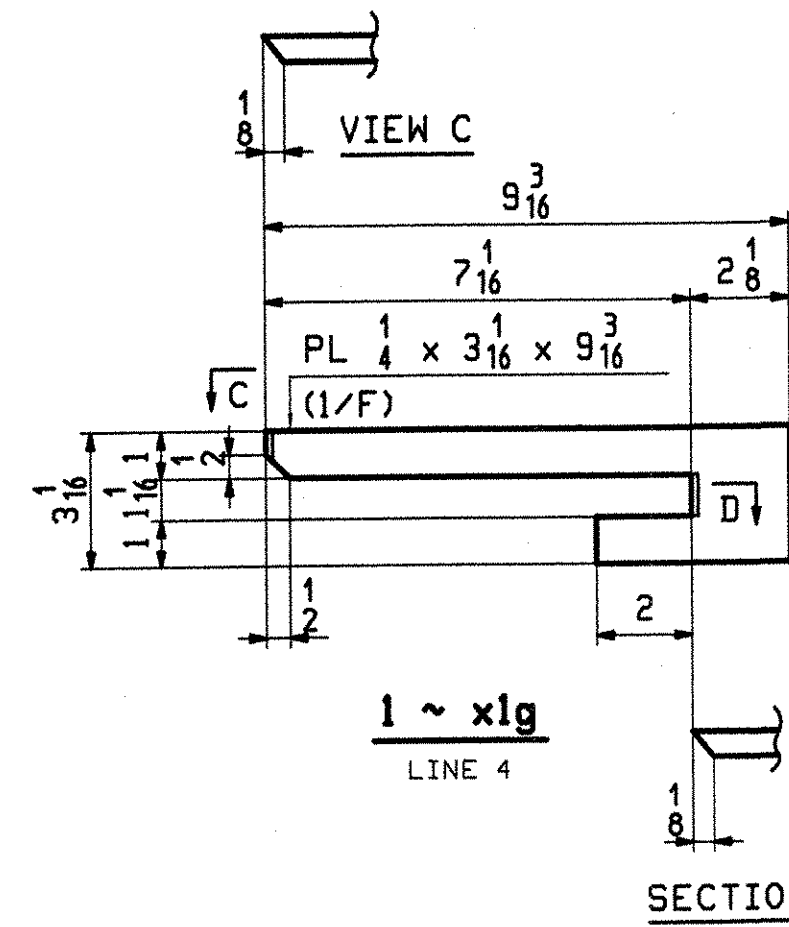


4 ~ x1h  
BRG FASCIA STIFF



1 ~ x1f  
LINE 1

SECTION B



1 ~ x1g  
LINE 4

SECTION D

RECEIVED  
 CK'D BY LSJ OK'D BY RSY  
 APR 30 2008  
 RESUBMIT \_\_\_\_\_ APPROVED \_\_\_\_\_  
 BY OPW DATE 5/7/08

NOTES:  
 ALL MATERIAL SHALL BE M270-50W.  
 ALL BOLT HOLES SHALL BE 15/16" FOR 7/8" HSB.  
 FOR GENERAL NOTES SEE DRAWING GNI.

REV.	DATE	REMARKS	DWN	CHK	APVL	SHOP
0						4-26-08
MATERIAL:		SURFACE PREP. & PAINT:		HOLES:		SHOP BOLTS:
M270-50W		AS NOTED ON GNI		15/16"		NONE
DESCRIPTION: STRINGER STANDARDS						
CASCO BAY STEEL STRUCTURES, INC. 75 SPRING HILL ROAD SACO, MAINE 04072 PHONE (207) 282-7360 FAX. (207) 282-1179						
STRUCTURE: TH 8 OVER MILL BROOK BRIDGE NO. B25 COUNTY OF WINDSOR			DRAWN: JTB	DATE: 04/10		
			CHKD: JF	DATE: 04/18		
LOCATION: TOWN OF READING			JOB NO.	DWG NO.		
PROJ NO. BRZ 1444(23)			366	X1		
CUSTOMER: VERMONT A.O.T.				REV.	▲	

178 04-19-08 10:28:03 EDT 2008 C:\msdcs\user\27752\1\_1.dwg