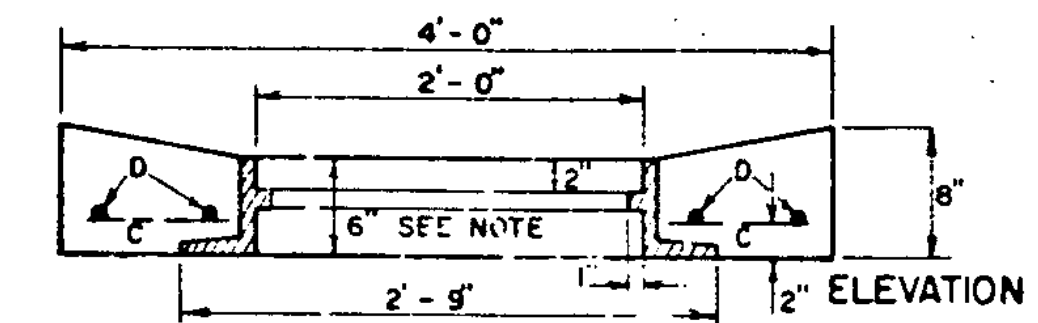


PLAN VIEW



ELEVATION

NOTE - FRAME SHOWN IS FOR TYPE A GRATE, SEE SHEET D-11. FOR TYPE B GRATE AND FRAME, SEE SHEET D-16 (EXCEPT THE FRAME DEPTH DIMENSION SHALL BE 6").

TOP FOR REINFORCED CONCRETE DROP INLET WITH GRATE FOR USE IN DITCHES

STEEL SCHEDULE																												
4x4 DROP INLET TYPE A						4x6 DROP INLET WITH TWO GRATES TYPE B						TYPE C						4x6 DROP INLET WITH ONE GRATE WITH 4x6 TOP										
12", 15", 18", 24"						30", 36"						30", 36"						30", 36"										
DEPTH	G	LENGTH	H	J	LENGTH	C, D	LENGTH	G	LENGTH	H	J	LENGTH	C	LENGTH	DEPTH	G	LENGTH	H	J	LENGTH	C	LENGTH	D	LENGTH	DEPTH			
3'-0"	15	2'-3"	22	3'-8"	8	3'-3"									3'-0"													
3'-6"	15	2'-9"	22	3'-8"	8	3'-8"									3'-6"													
4'-0"	15	3'-3"	29	3'-8"	8	3'-8"	17	3'-3"	19	3'-8"	10	5'-8"	4	3'-8"	4	5'-8"	4'-0"	17	3'-8"	19	3'-8"	10	5'-8"	6	3'-8"	4	5'-8"	4'-0"
4'-6"	15	3'-9"	29	3'-8"	8	3'-8"	17	3'-9"	19	3'-8"	10	5'-8"	4	3'-8"	4	5'-8"	4'-6"	17	4'-2"	19	3'-8"	10	5'-8"	6	3'-8"	4	5'-8"	4'-6"
5'-0"	15	4'-3"	35	3'-8"	8	3'-8"	17	4'-3"	23	3'-8"	13	7'-8"	4	3'-8"	4	5'-8"	5'-0"	17	4'-8"	23	3'-8"	13	5'-8"	6	3'-8"	4	5'-8"	5'-0"
5'-6"	15	4'-9"	35	3'-8"	8	3'-8"	17	4'-9"	23	3'-8"	13	7'-8"	4	3'-8"	4	5'-8"	5'-6"	17	5'-2"	23	3'-8"	13	5'-8"	6	3'-8"	4	5'-8"	5'-6"
6'-0"	15	5'-3"	41	3'-8"	8	3'-8"	17	5'-3"	27	3'-8"	15	5'-8"	4	3'-8"	4	5'-8"	6'-0"	17	5'-8"	27	3'-8"	15	5'-8"	6	3'-8"	4	5'-8"	6'-0"
6'-6"	15	5'-9"	41	3'-8"	8	3'-8"	17	5'-9"	31	3'-8"	15	5'-8"	4	3'-8"	4	5'-8"	6'-6"	17	6'-2"	31	3'-8"	15	5'-8"	6	3'-8"	4	5'-8"	6'-6"
7'-0"	15	6'-3"	47	3'-8"	8	3'-8"	17	6'-3"	35	3'-8"	17	5'-8"	4	3'-8"	4	5'-8"	7'-0"	17	6'-8"	35	3'-8"	17	5'-8"	6	3'-8"	4	5'-8"	7'-0"
7'-6"	15	6'-9"	47	3'-8"	8	3'-8"	17	6'-9"	35	3'-8"	17	5'-8"	4	3'-8"	4	5'-8"	7'-6"	17	7'-2"	35	3'-8"	17	5'-8"	6	3'-8"	4	5'-8"	7'-6"
8'-0"	15	7'-3"	53	3'-8"	8	3'-8"	17	7'-3"	39	3'-8"	19	5'-8"	4	3'-8"	4	5'-8"	8'-0"	17	7'-8"	39	3'-8"	19	5'-8"	6	3'-8"	4	5'-8"	8'-0"

STEEL AND CONCRETE QUANTITIES												STEEL SCHEDULE TYPE D														
4x4 DROP INLET				4x6 DROP INLET WITH TWO GRATES				4x6 DROP INLET WITH ONE GRATE WITH 4x6 TOP				4x6 DROP INLET WITH ONE GRATE WITH 4x4 TOP				4x6 DROP INLET WITH ONE GRATE WITH 4x4 TOP										
12", 15", 18", 24" TYPE A				30" TYPE B				36" TYPE C				30" TYPE C				36" TYPE C										
DEPTH	CONCRETE C.Y.	STEEL LBS.		CONCRETE C.Y.	STEEL LBS.	CONCRETE C.Y.	STEEL LBS.	CONCRETE C.Y.	STEEL LBS.	CONCRETE C.Y.	STEEL LBS.	CONCRETE C.Y.	STEEL LBS.	CONCRETE C.Y.	STEEL LBS.	CONCRETE C.Y.	STEEL LBS.	CONCRETE C.Y.	STEEL LBS.	CONCRETE C.Y.	STEEL LBS.	CONCRETE C.Y.	STEEL LBS.	CONCRETE C.Y.	STEEL LBS.	
3'-0"	1.7	150																								
3'-6"	1.9	158																								
4'-0"	2.1	193		.7	228					2.8	244															
4'-6"	2.3	200		3.0	237	2.0	237			3.1	252	3.0	292													
5'-0"	2.5	231		3.3	279	3.2	279	5'-0"		3.4	294	3.3	294													
5'-6"	2.8	239		3.6	288	3.5	288	5'-6"		3.7	303	3.6	303													
6'-0"	3.0	270		3.9	324	3.8	324	6'-0"		4.0	339	3.9	339													
6'-6"	3.2	278		4.2	348	4.1	348	6'-6"		4.3	363	4.2	363													
7'-0"	3.5	308		4.5	384	4.4	384	7'-0"		4.6	399	4.5	399													
7'-6"	3.7	316		4.8	393	4.7	393	7'-6"		4.9	408	4.8	408													
8'-0"	3.9	347		5.1	429	5.0	429	8'-0"		5.2	444	5.1	444													

FOR 2nd 30" PIPE DEDUCT 0.18 C.Y. FOR 2nd 36" PIPE DEDUCT 0.26 C.Y.

FOR 2nd 42" PIPE DEDUCT 0.36 C.Y. OR 0.18 FOR 1 PIPE FOR 2nd 48" PIPE DEDUCT 0.47 C.Y. OR 0.24 FOR 1 PIPE

ALL REINFORCING STEEL TO BE NO. 5 DEFORMED BARS, EVENLY SPACED WITH A MAXIMUM SPACING OF 12" C/C.

ALL STEEL TO HAVE 2 INCH MIN. COVER.

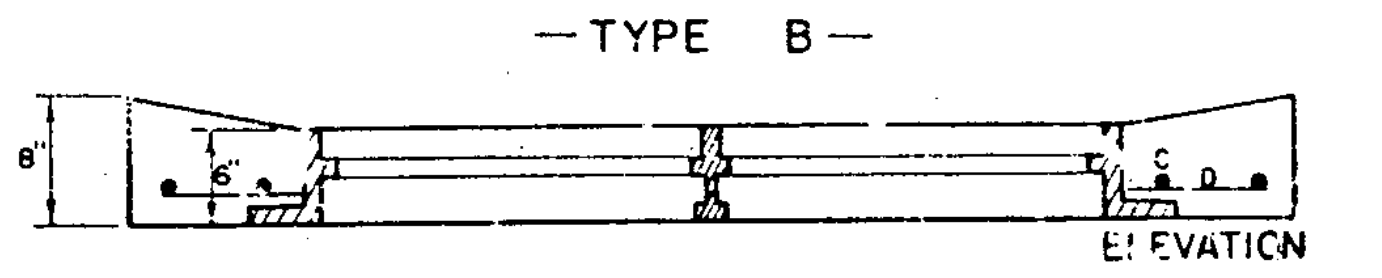
DRY-INLET TO BE CONSTRUCTED IN ACCORDANCE WITH STRUCTURAL CONCRETE, SECTION 501.

GRATES TO CONFORM TO DROP INLETS, CATCH BASINS, AND MANHOLES, SECTION 604.

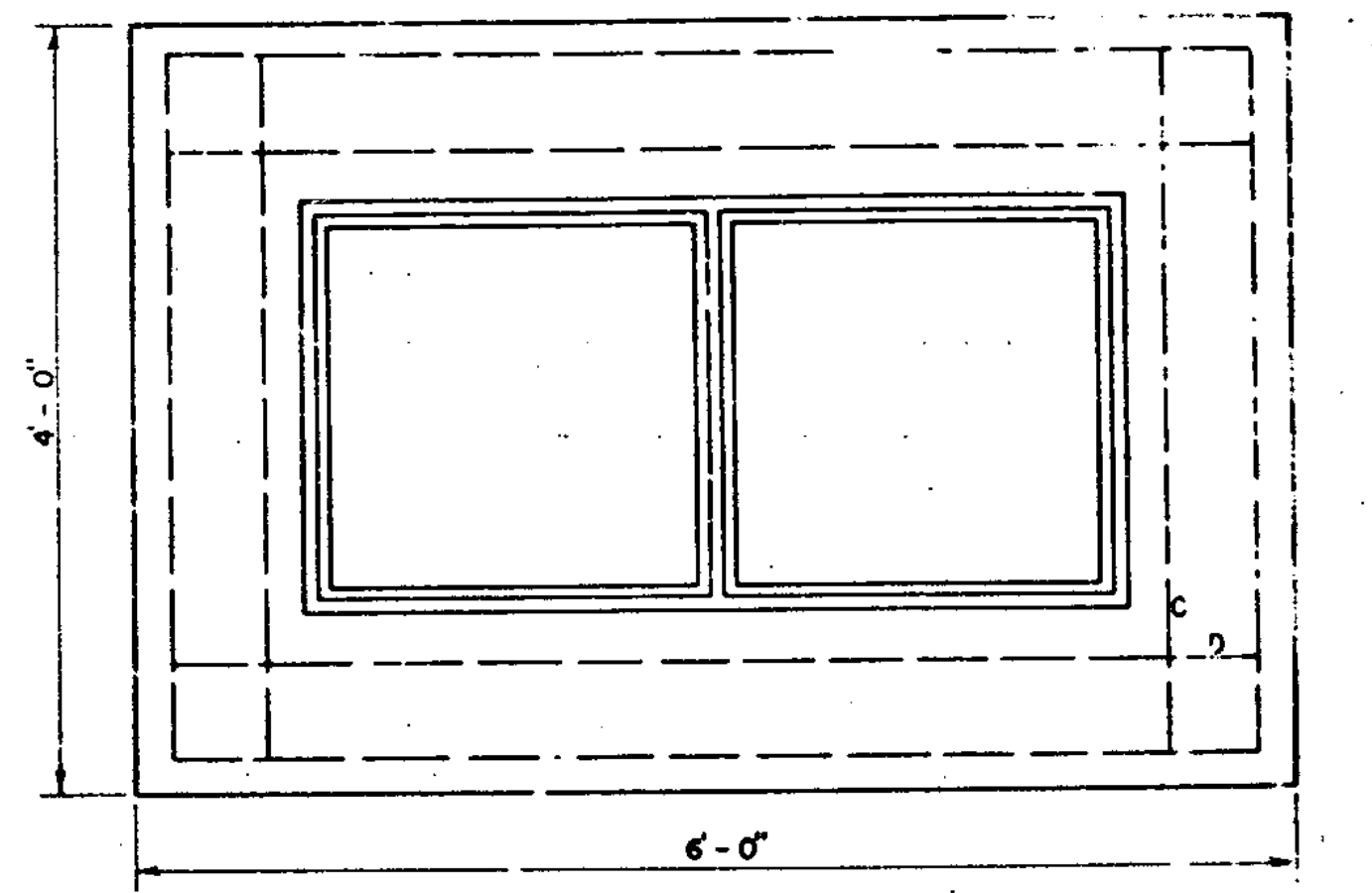
FURNISHING AND LAYING OF BRICKS FOR ADJUSTING ELEVATION OF GRATE SHALL BE INCLUDED IN UNIT BID PRICE FOR CONCRETE, CLASS B, PAY ITEM 501.25, AND THEIR VOLUME TO BE INCLUDED IN THE FINAL QUANTITIES.

MORTAR, TYPE II, TO BE USED AS JOINT FILLER AND LAYING OF BRICK.

FOR PIPES OF 30" OR MORE IN DIAMETER, ALLOWANCE SHALL BE MADE FOR THE OPENING IN COMPUTING CONCRETE VOLUMES. THIS DEDUCTION WILL BE BASED ON THE RATED DIAMETER OF THE PIPE USED, WITH THE SAME DEDUCTION FOR CONCRETE AND METAL PIPE. ABOVE TABLES INDICATE DEDUCTION FOR ONE PIPE.

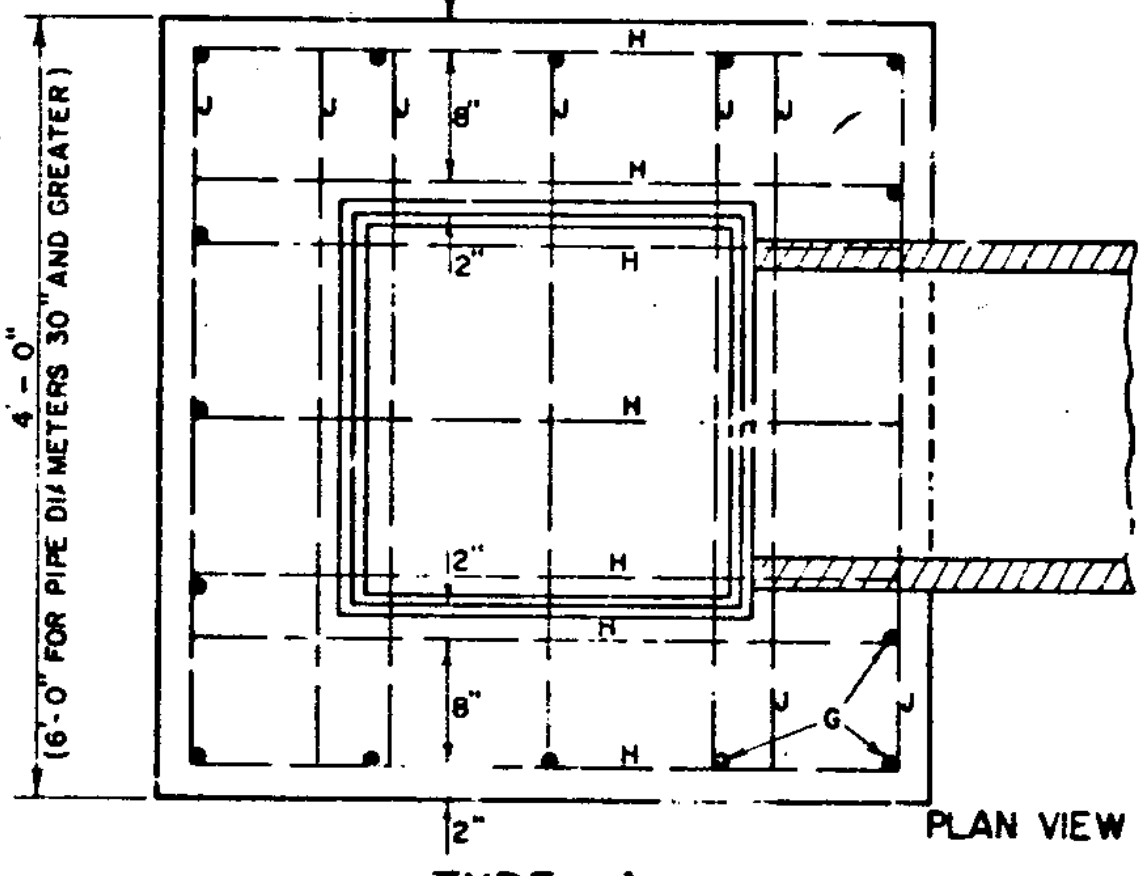


ELEVATION



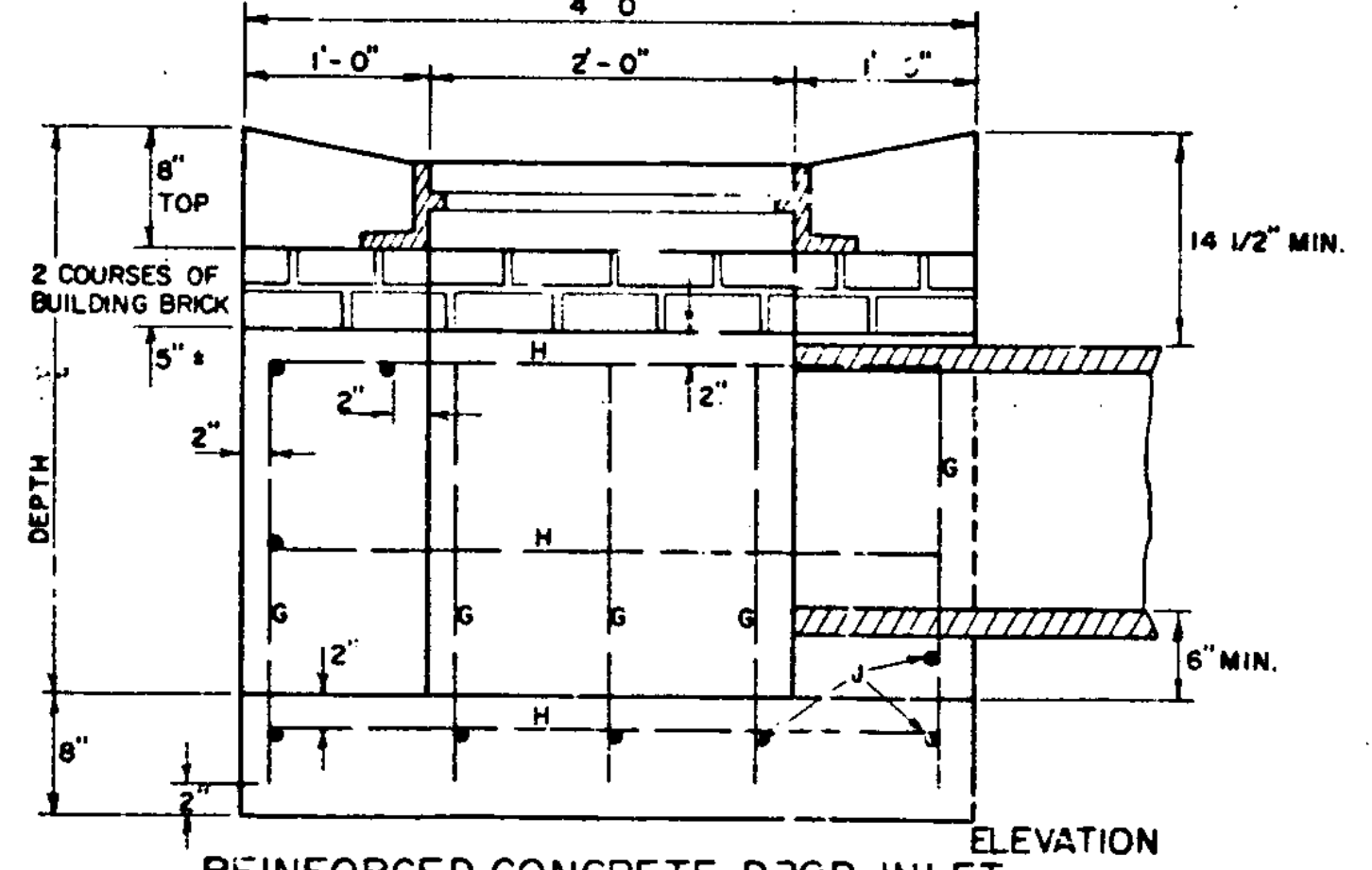
PLAN VIEW

4x6 DROP INLET TOP WITH TWO CAST IRON GRATES



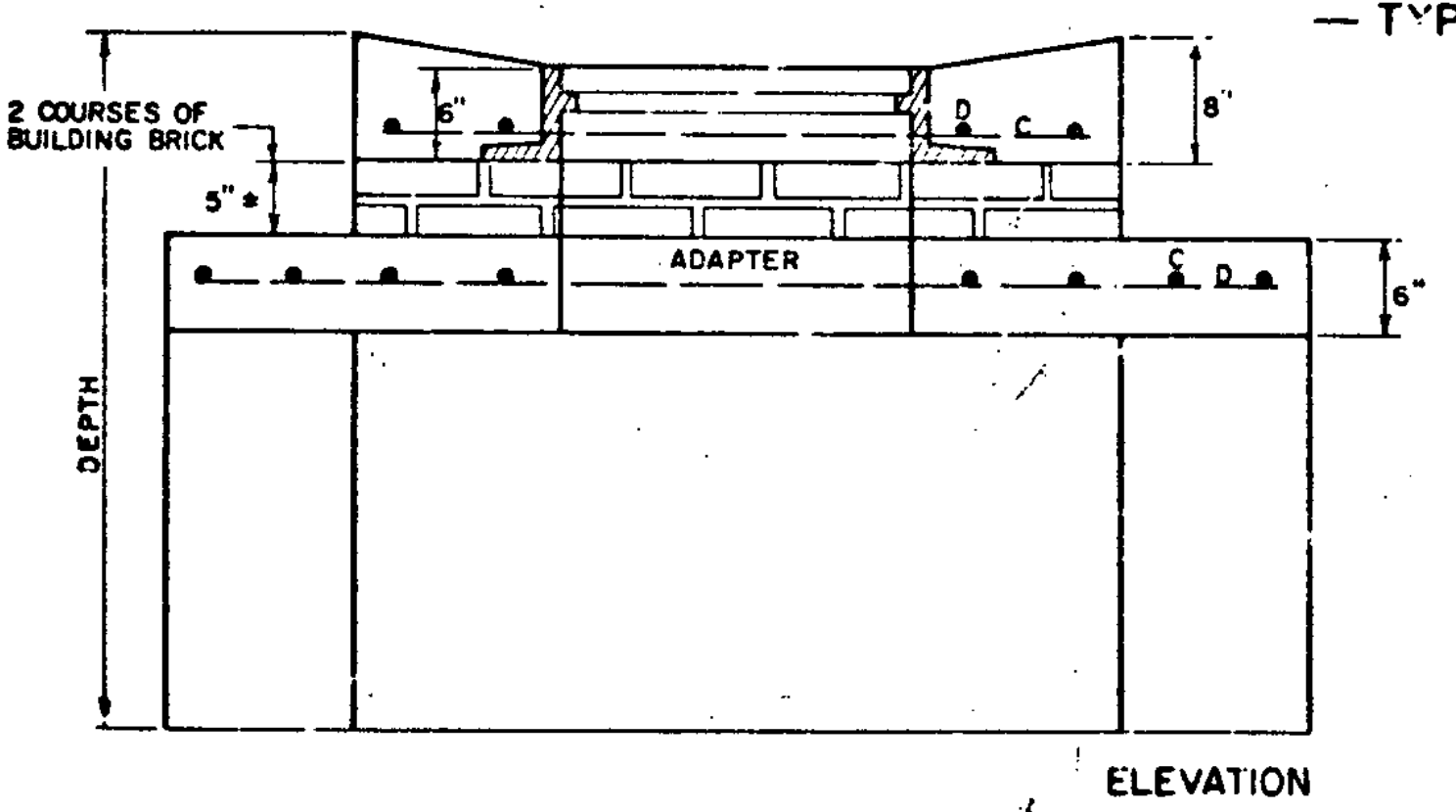
PLAN VIEW

- TYPE A -



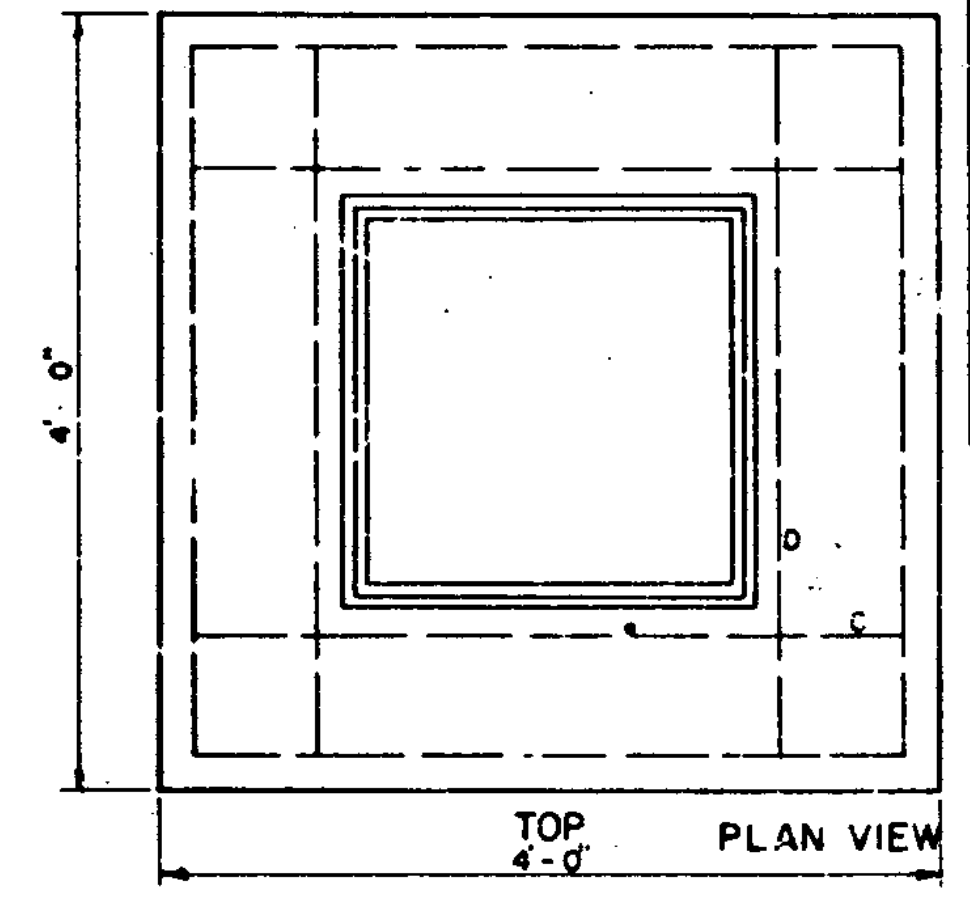
ELEVATION

REINFORCED CONCRETE DROP INLET FOR USE IN DITCHES



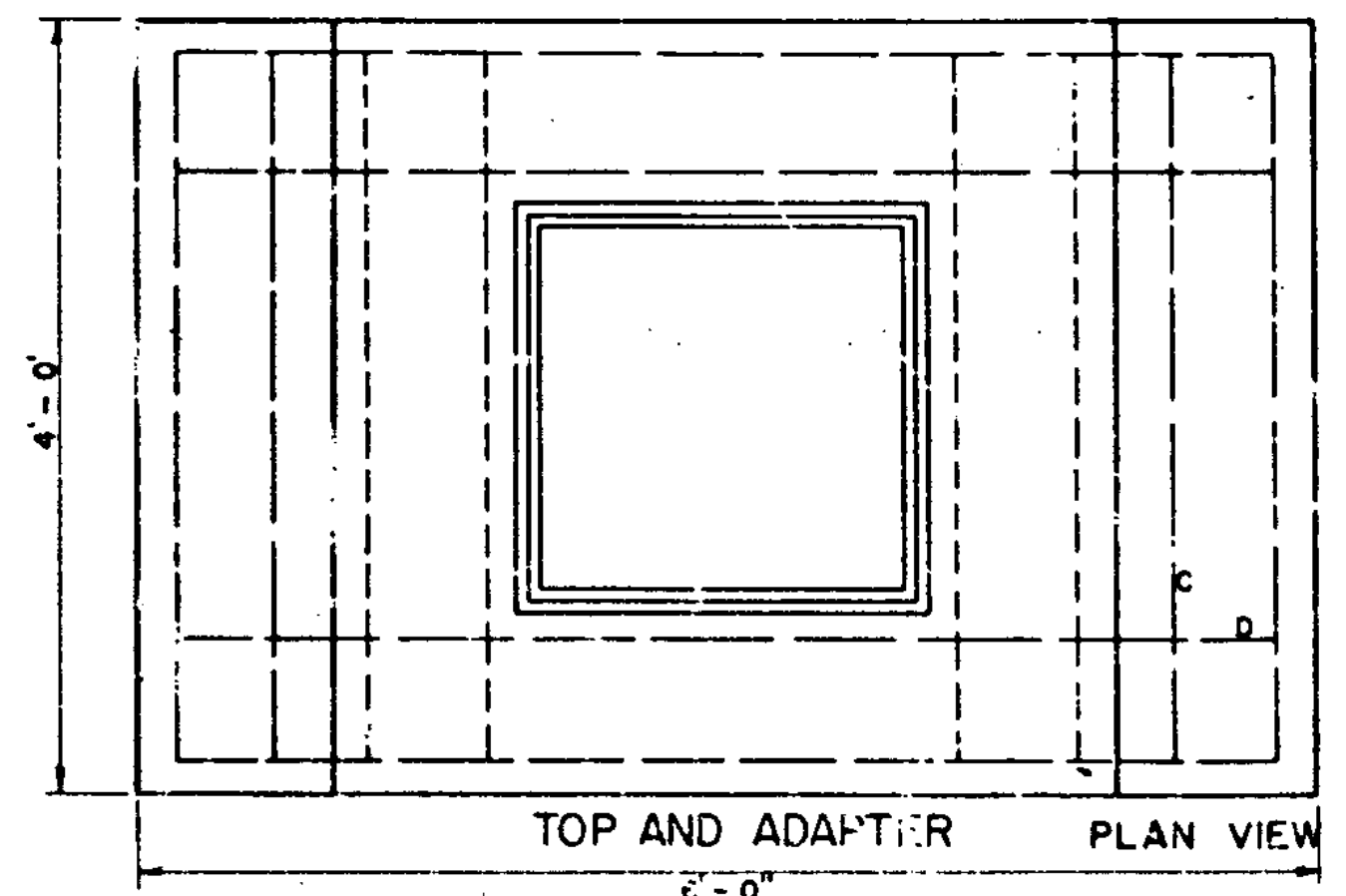
ELEVATION

4x6 DROP INLET TOP WITH ONE CAST IRON GRATE



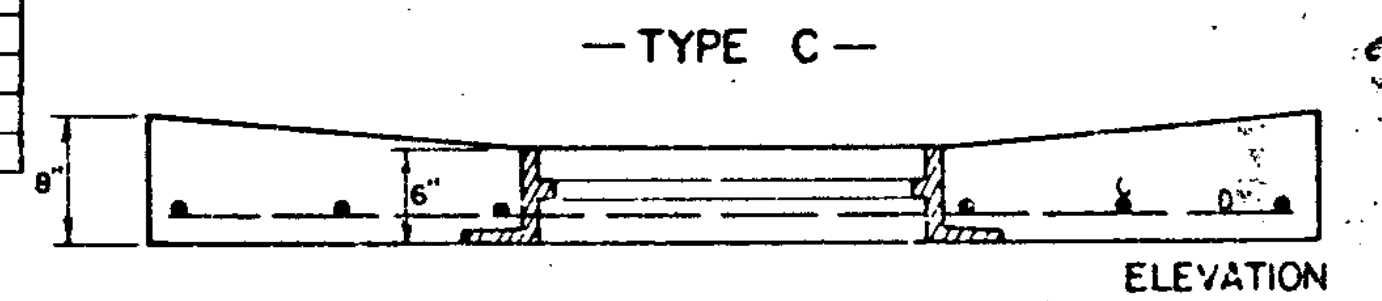
PLAN VIEW

- TYPE D -

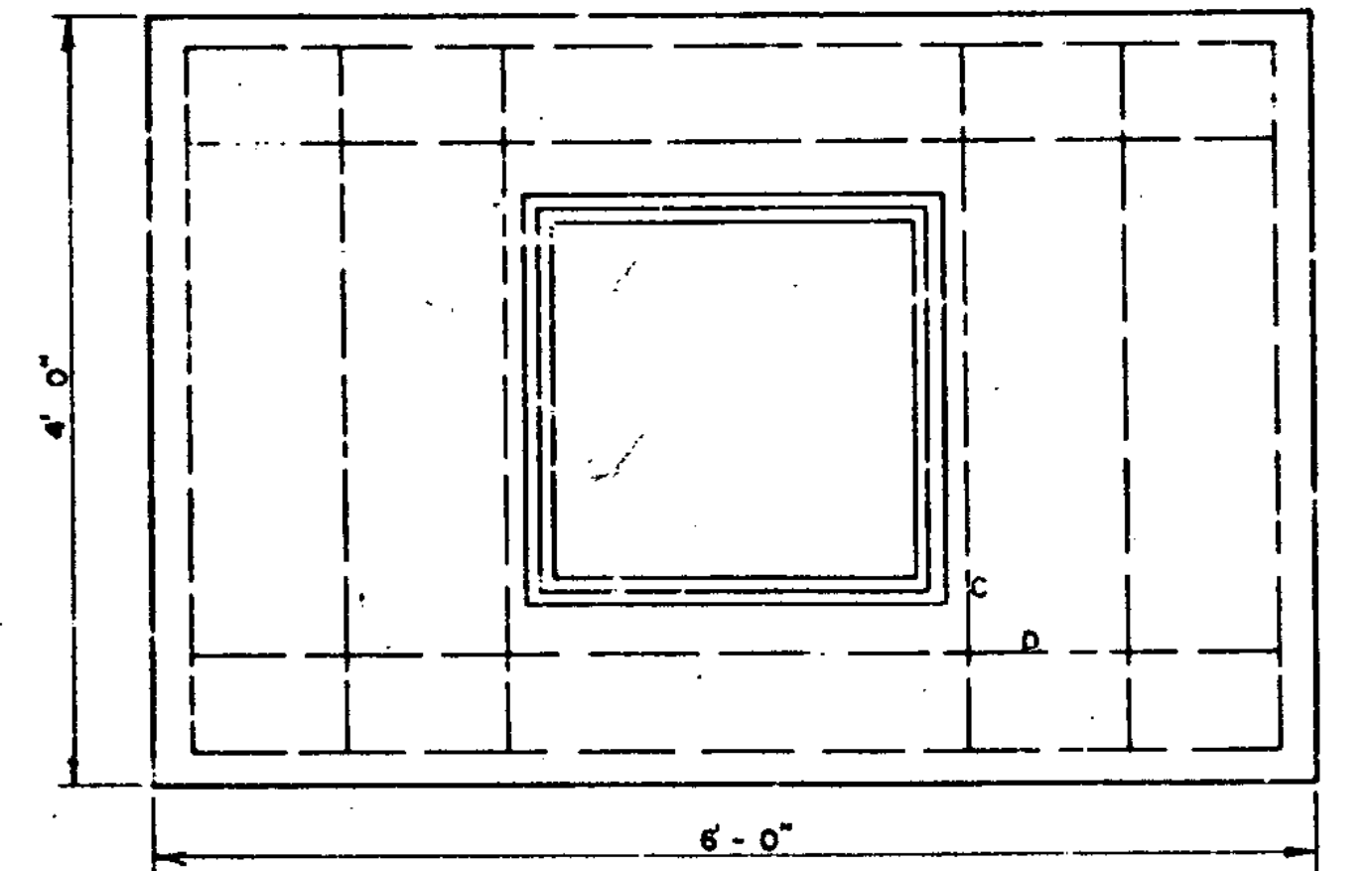


PLAN VIEW

STEEL AND CONCRETE QUANTITIES				
4x6 DROP INLET WITH ONE GRATE WITH 4x4 TOP TYPE D				
DEPTH	30"		36"	
	CONCRETE C.Y.	STEEL LBS.	CONCRETE C.Y.	STEEL LBS.
5'-0"	3.2	313	3.1	313
5'-6"	3.5	322	3.4	322
6'-0"	3.8	358	3.7	358
6'-6"	4.1	382	4.0	382
7'-0"	4.4	413	4.3	418
7'-6"	4.7	427	4.6	437
8'-0"	5.0	463	4.9	463



ELEVATION



PLAN VIEW

4x6 DROP INLET TOP WITH ONE CAST IRON GRATE

REVISIONS AND CORRECTIONS
APR. 2, 1973 - ORIGINAL D-6 REDRAWN.

APPROVED
April 4, 1973
DATE

R.H. Arnold
CHIEF ENGINEER
E.H. Steiner
ASST. CHIEF ENGINEER
J.M. Low
HIGHWAY ENGINEER

REINFORCED CONCRETE DROP INLET WITH GRATE FOR USE IN DITCHES

VERMONT
DEPARTMENT
OF HIGHWAYS
STANDARD

D-6