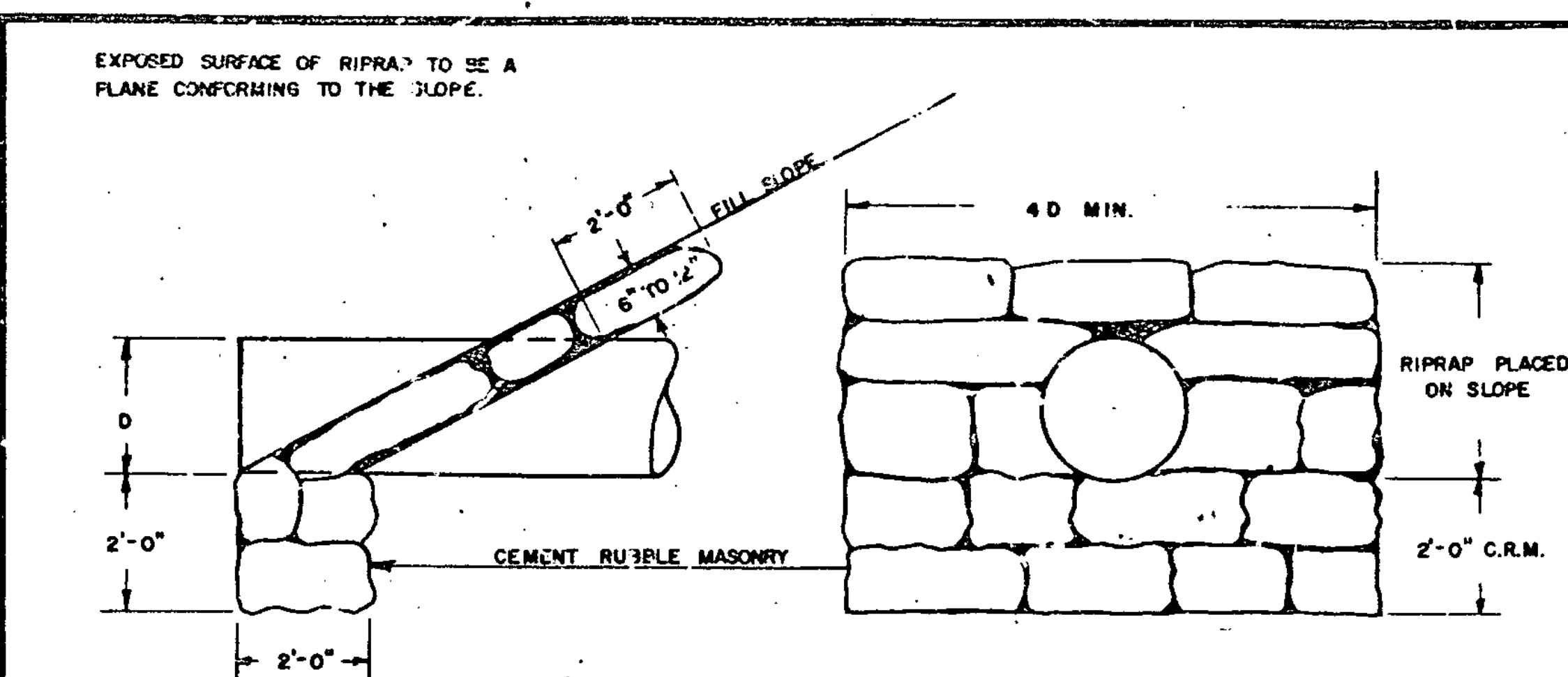
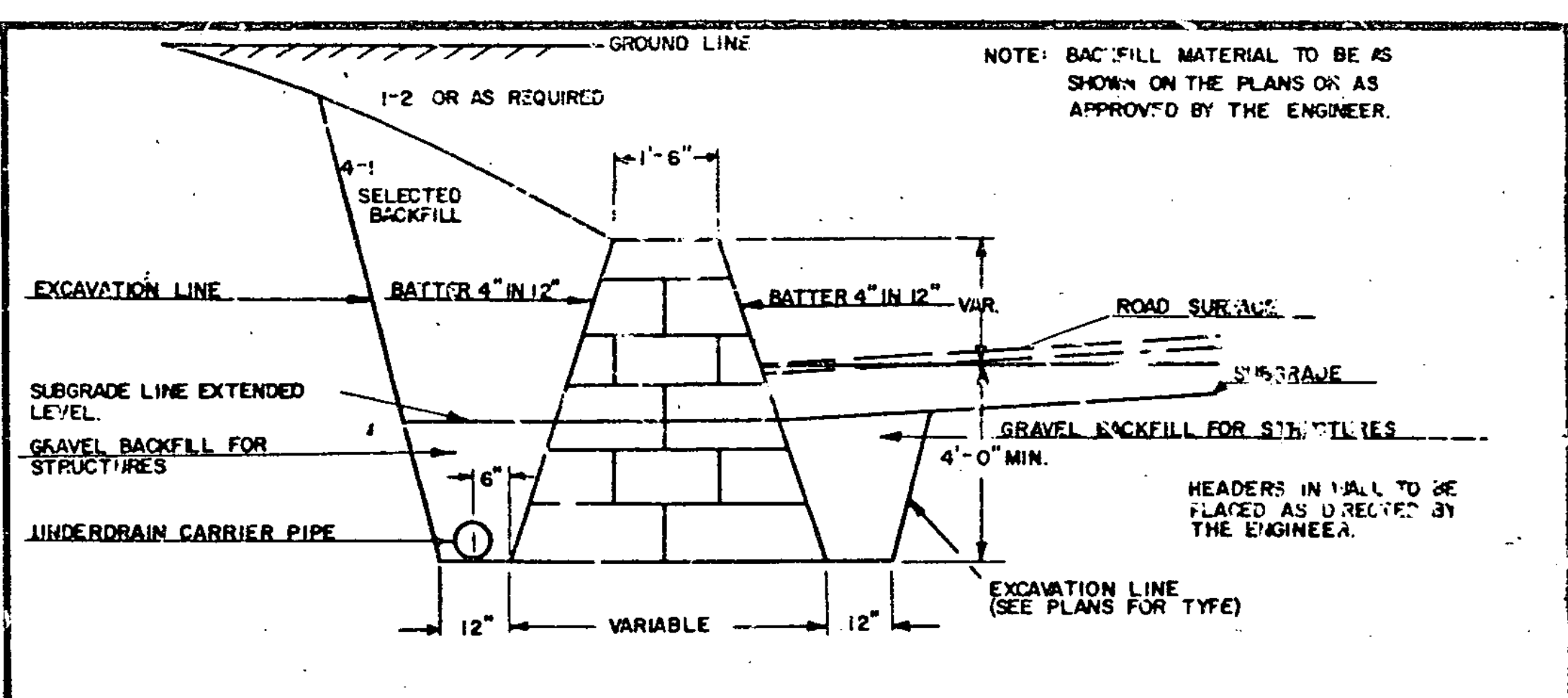


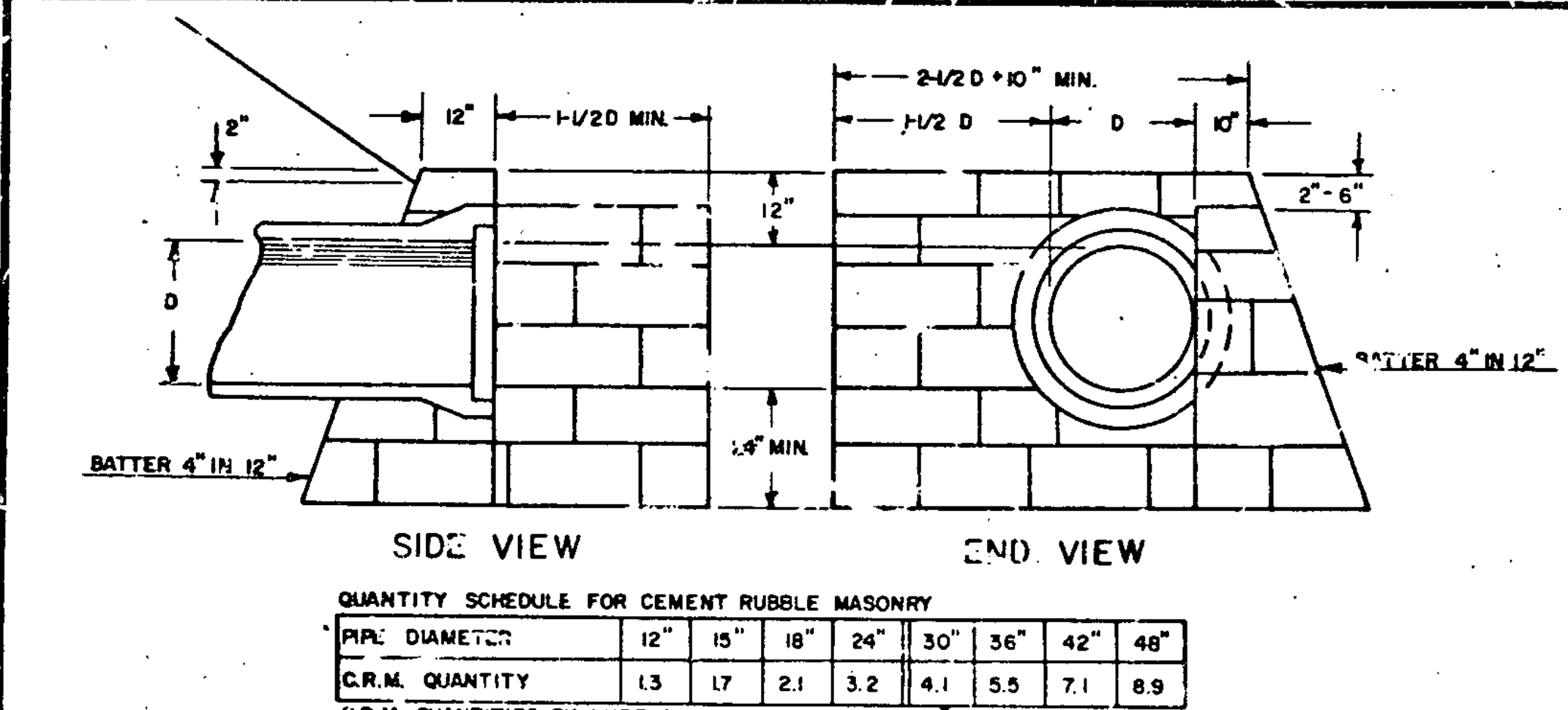
CEMENT RUBBLE MASONRY STRAIGHT HEADWALL



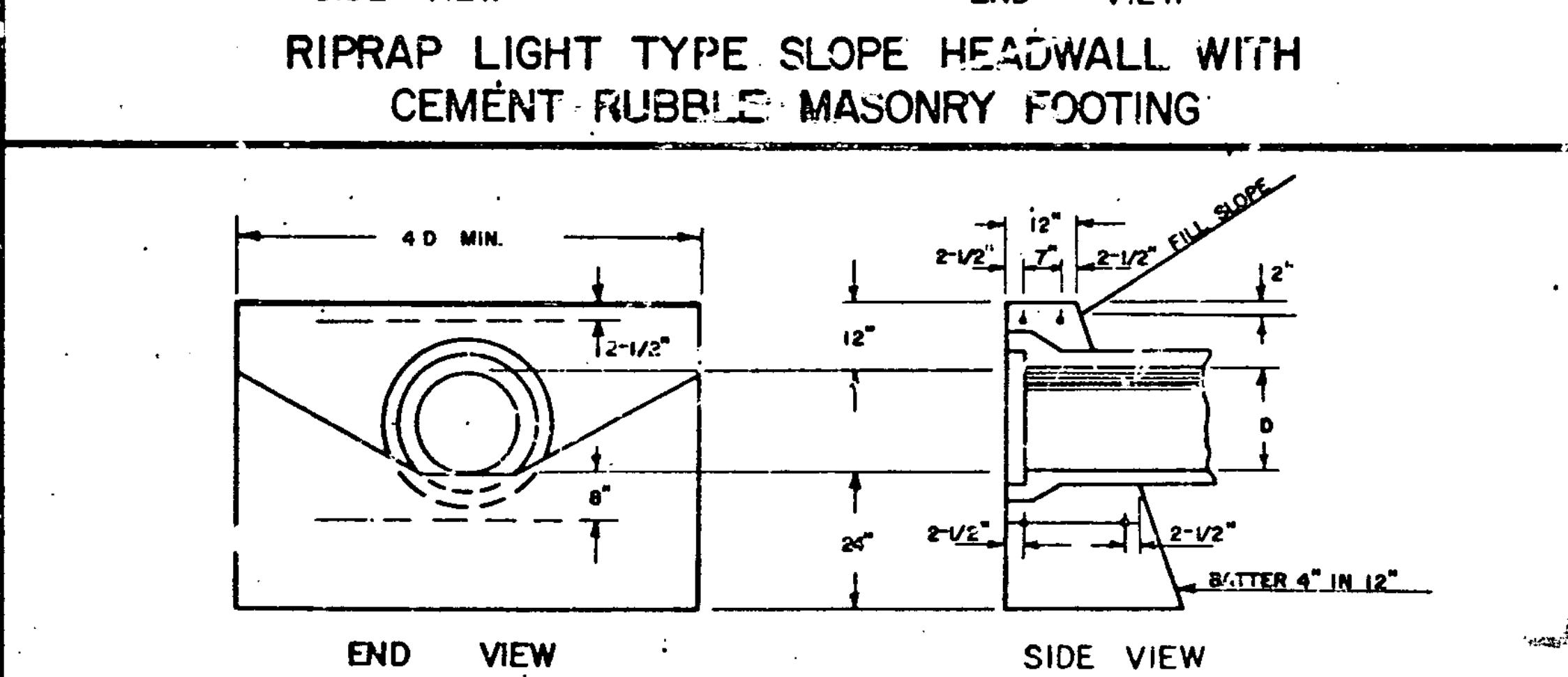
RIPRAP LIGHT TYPE SLOPE HEADWALL WITH CEMENT RUBBLE MASONRY FOOTING



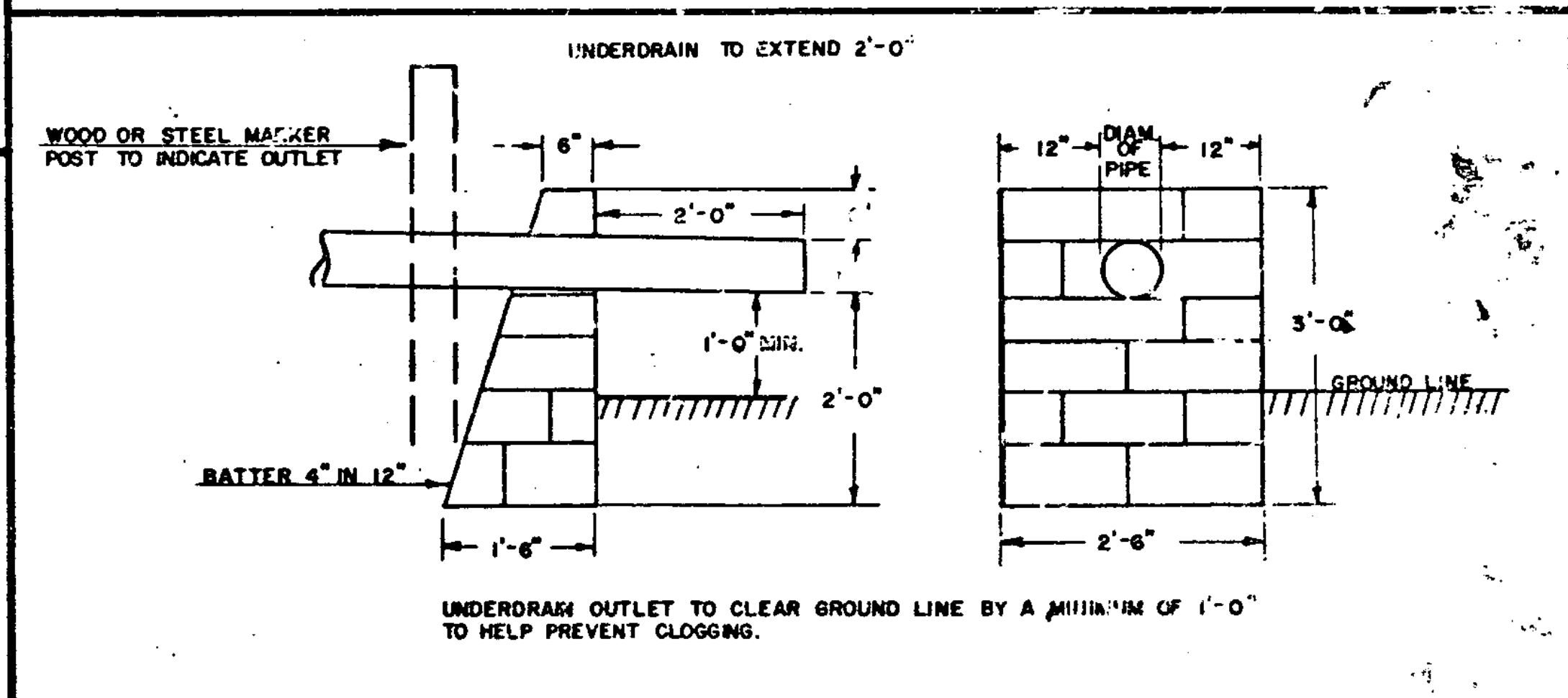
CEMENT RUBBLE MASONRY RETAINING WALL



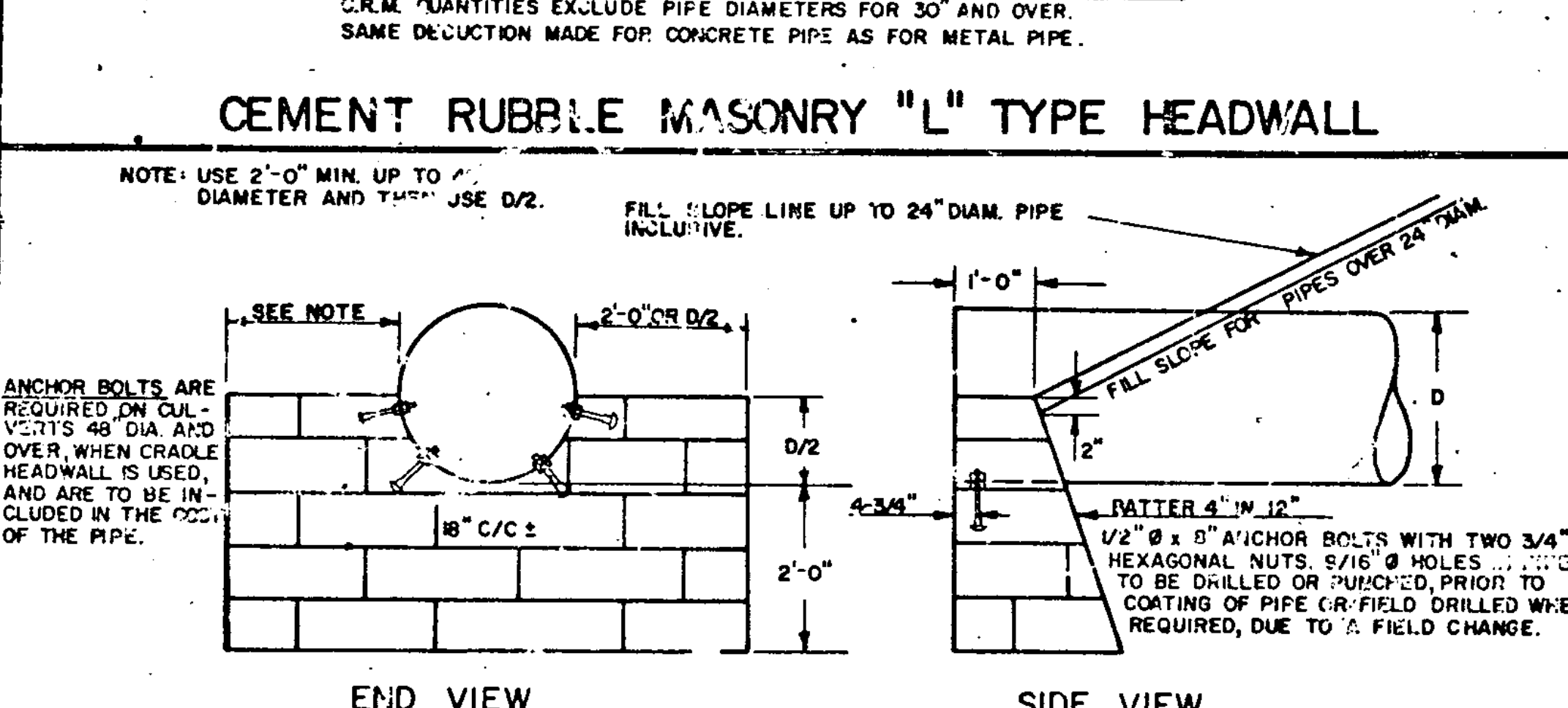
CEMENT RUBBLE MASONRY "L" TYPE HEADWALL



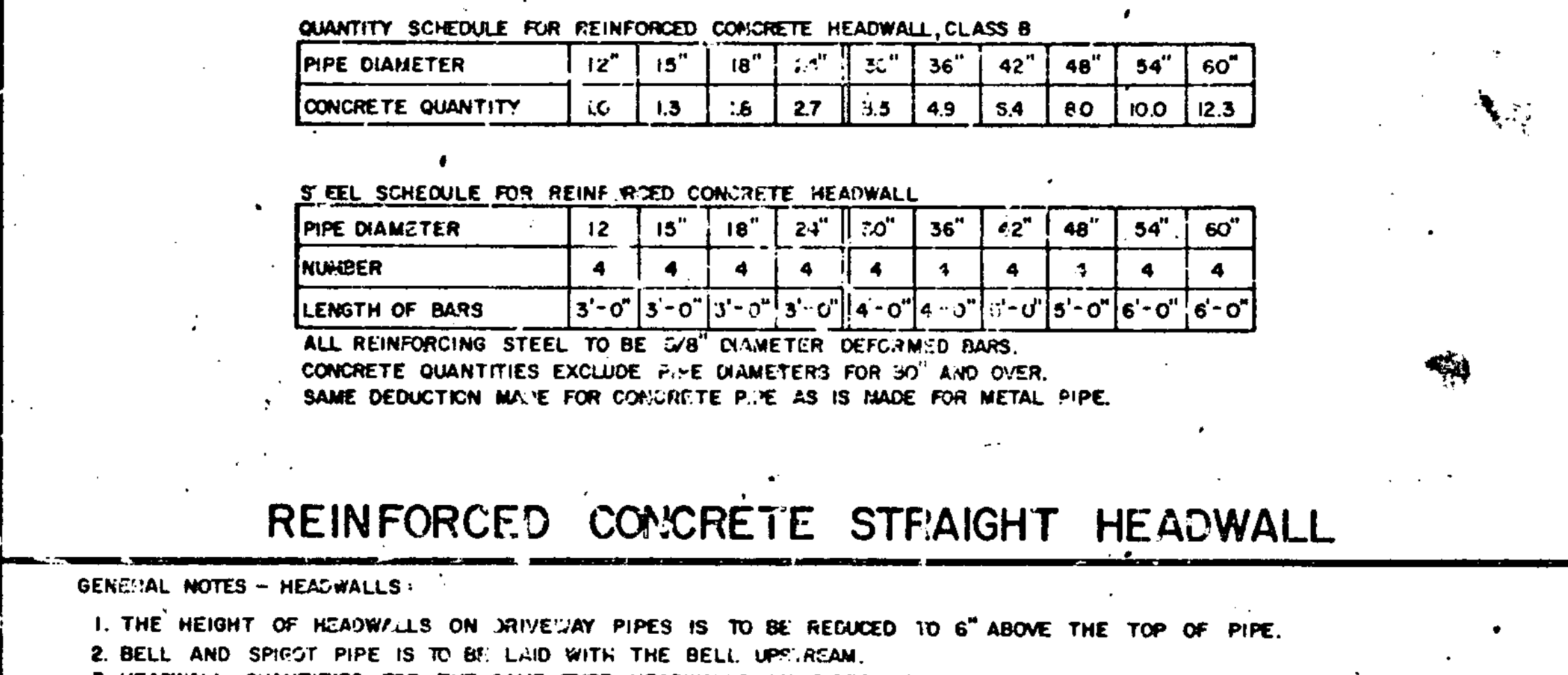
REINFORCED CONCRETE STRAIGHT HEADWALL



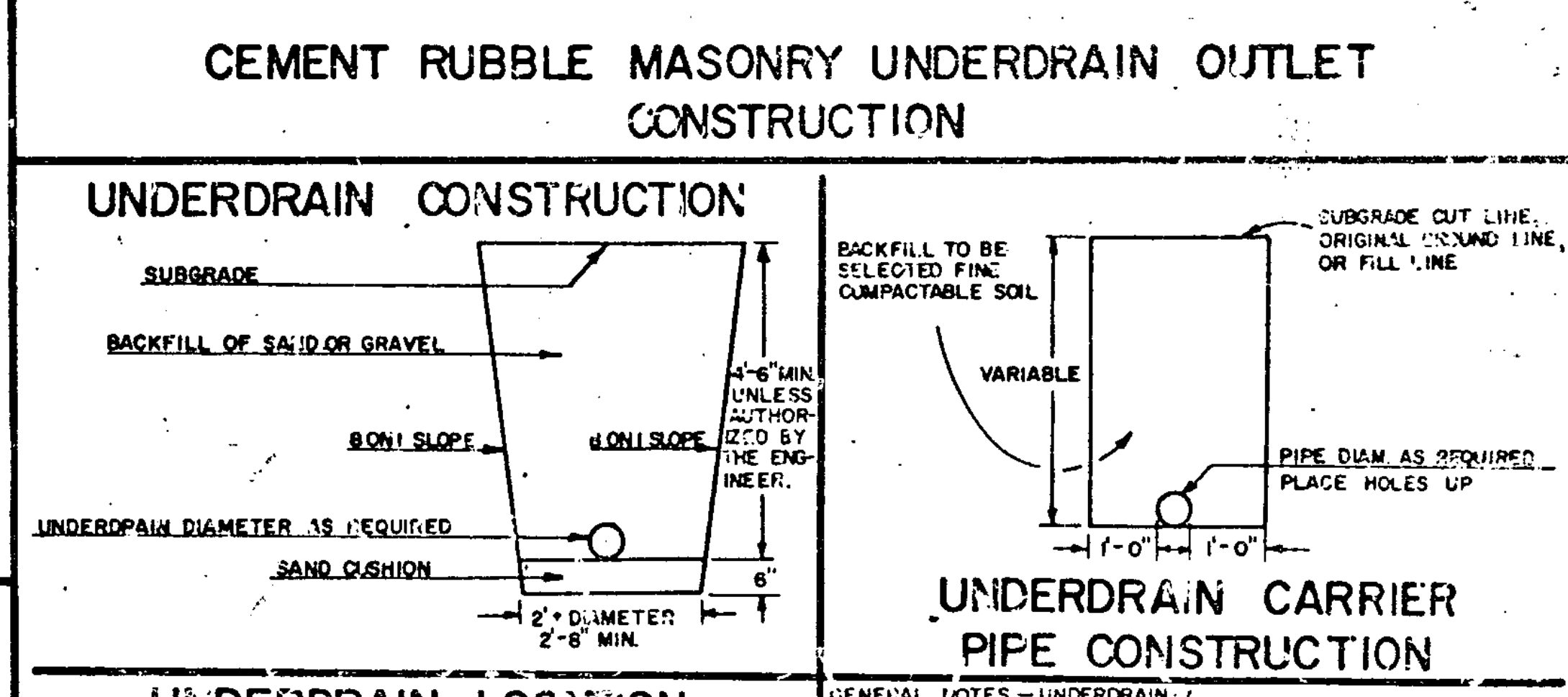
CEMENT RUBBLE MASONRY UNDERDRAIN OUTLET CONSTRUCTION



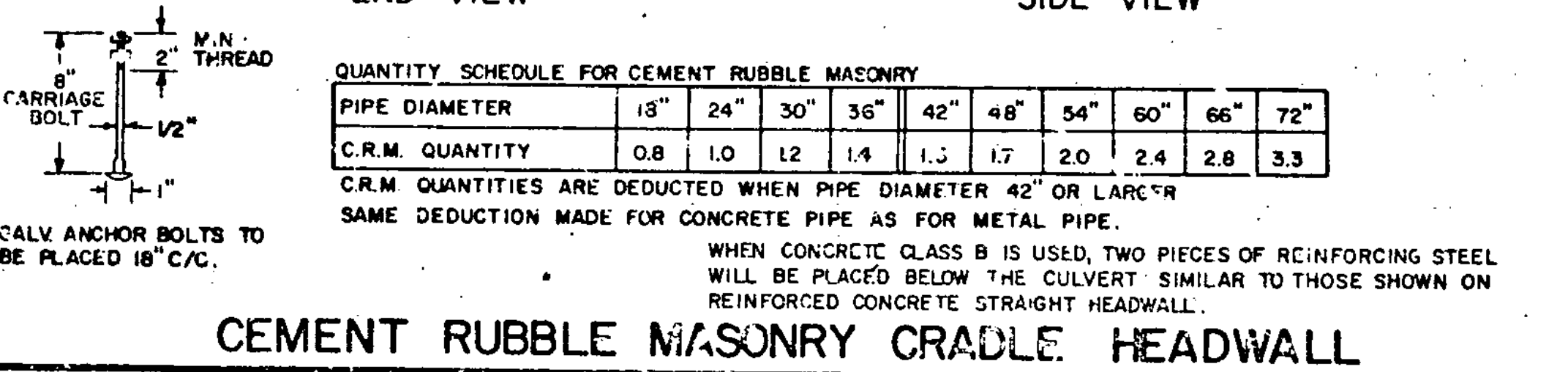
CEMENT RUBBLE MASONRY CRADLE HEADWALL



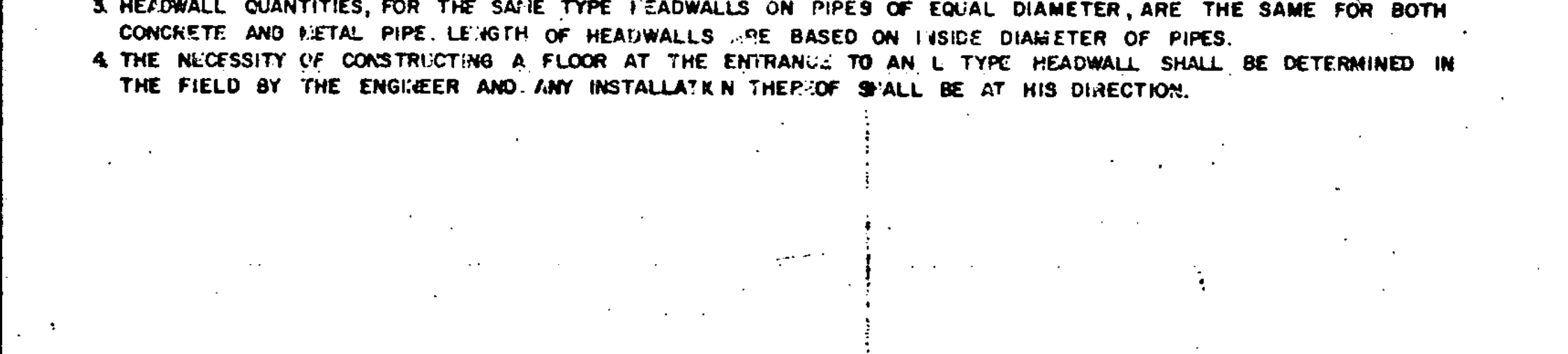
REINFORCED CONCRETE STRAIGHT HEADWALL



UNDERDRAIN LOCATION



CEMENT RUBBLE MASONRY CRADLE HEADWALL



REINFORCED CONCRETE STRAIGHT HEADWALL

REVISIONS AND CORRECTIONS

MAR. 8, 1972 CHANGED ANCHOR BOLTS FROM 10" 'L' TO 8" CARRIAGE BOLTS

DEC. 16, 1976 NOTE ADDED ON REINFORCING STEEL FOR CRADLE HEADWALLS.

APPROVED: DATE: Dec. 6, 1971

*R.W. Arnold*  
CHIEF ENGINEER

*E.H. Stinchney*  
ASST. CHIEF ENGINEER

*G.M. Lane*  
HIGHWAY ENGINEER

CEMENT RUBBLE MASONRY HEADWALLS & RETAINING WALL

RIPRAP LIGHT TYPE SLOPE HEADWALL

REINFORCED CONCRETE HEADWALL

UNDERDRAIN & CARRIER PIPE CONSTRUCTION DETAILS

VERMONT DEPARTMENT OF HIGHWAYS STANDARDS

D-2