

REMOVAL & DISPOSAL OF EXISTING GUARD RAIL
 LT
 268+70-269+07

24" STOP BAR
 T.H. 49 4471, E-14' R.
 TRAFFIC SIGNS, TYPE A
 Lt
 267+65, (2)
 271+40

4" REFLECTORIZED WHITE LINES
 LT
 268+15, 14' LT. ~ 269+10, 45' LT. (30' R)
 269+45, 23' LT. ~ 269+73, 15' LT. (50' R)
 269+73 ~ 271+65, 15' LT.
 269+30, 60' LT. ~ 269+73, 27' LT. (50' R)
 269+73 ~ 271+65, 27' LT.
 271+65, 27' LT. ~ 272+15, 25' LT.
 272+15, 25' LT. ~ 272+75, 14' LT.
 272+75, 14' LT. ~ 274+00, 12' LT.
 274+00 ~ 275+00, 12' LT.

EROSION MATTING
 LT
 270+75 ~ 271+36
 271+87 ~ 272+25

CONSTRUCT DRIVE
 LT
 271+65

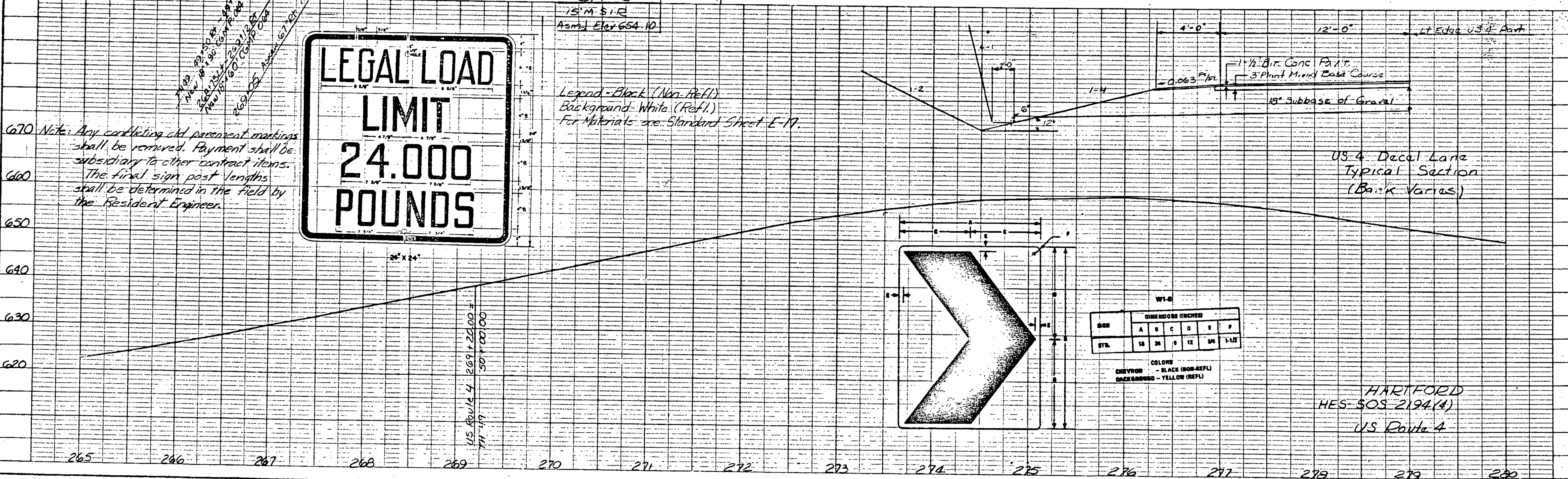
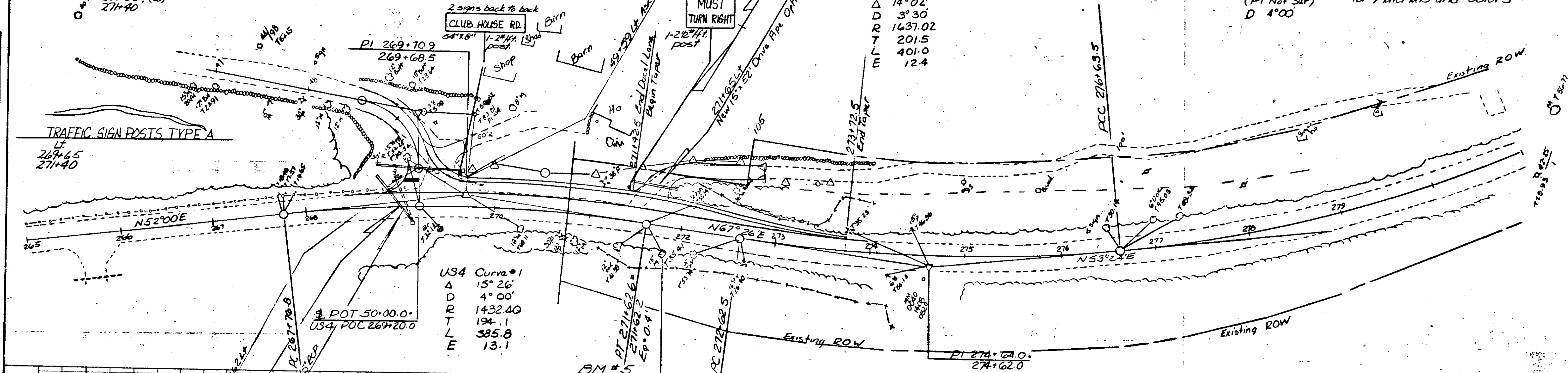
44' 10 1/2" 8" 13 3/4" 8" 5 3/4" 4 1/2"
 CLUB HOUSE RD.
 54"
 US4 Curve #3. See Standard Sheet E-17 for Materials and Colors
 (PI Not Set)
 D 4'00"

US4 Curve #2
 Δ 14° 02'
 D 3° 30'
 R 1637.02
 T 201.5
 L 401.0
 E 12.4

US4 Curve #1
 Δ 15° 26'
 D 4° 00'
 R 1432.40
 T 194.1
 L 385.8
 E 13.1

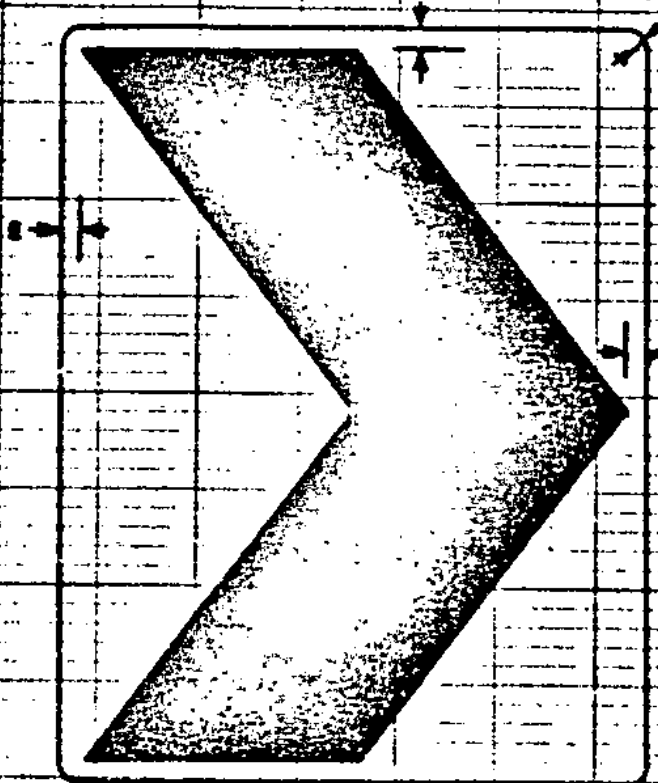
PLAN
 NOTE BOOK
 NO. 12

PROFILE
 NOTE BOOK
 NO. 12



670 Note: Any conflicting old pavement markings shall be removed. Payment shall be subsidiary to other contract items. The final sign post lengths shall be determined in the field by the Resident Engineer.

Legend - Black (Non-Refl)
 Background - White (Refl)
 For Materials see Standard Sheet E-17.



SIZE	DIMENSIONS (INCHES)				
	A	B	C	D	E
STL	18	24	9	12	24
					1-1/2"

COLORS
 CHEVRON - BLACK (NON-REFL)
 BACKGROUND - YELLOW (REFL)

HARTFORD
 HES-505-2194(4)
 US Route 4