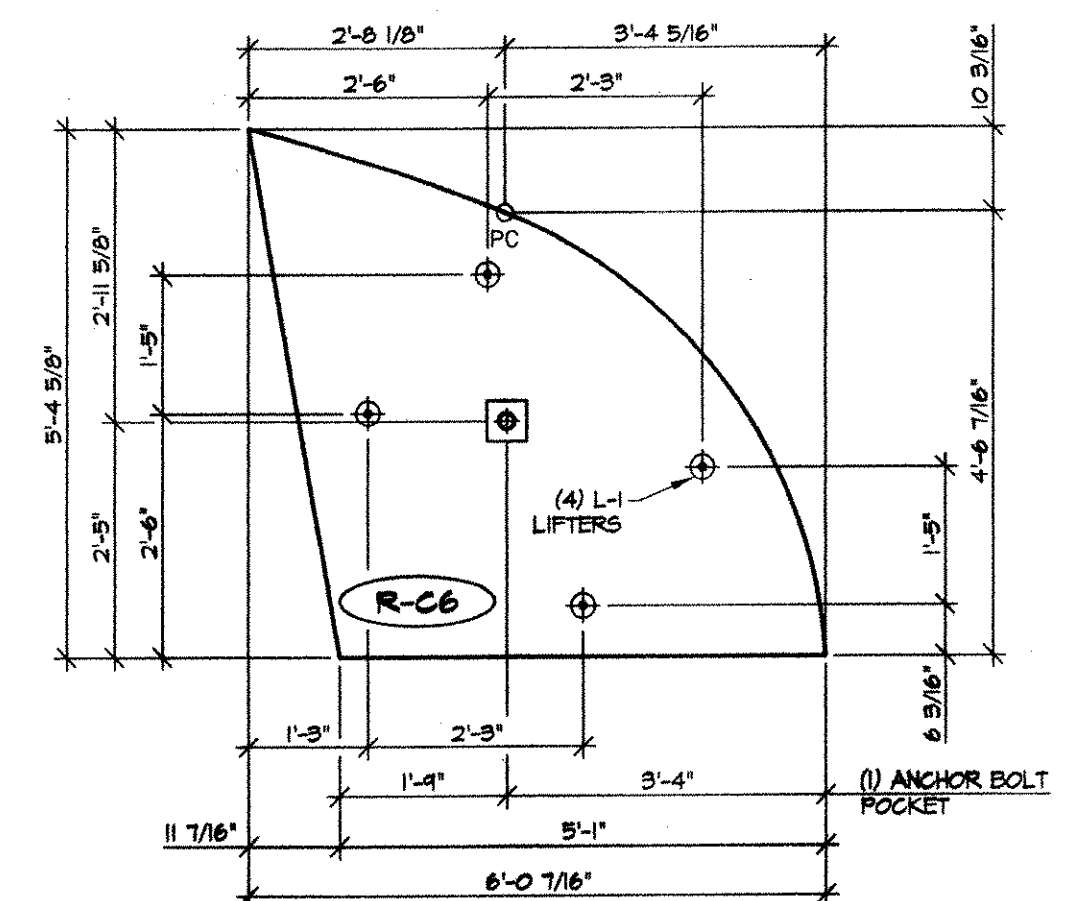
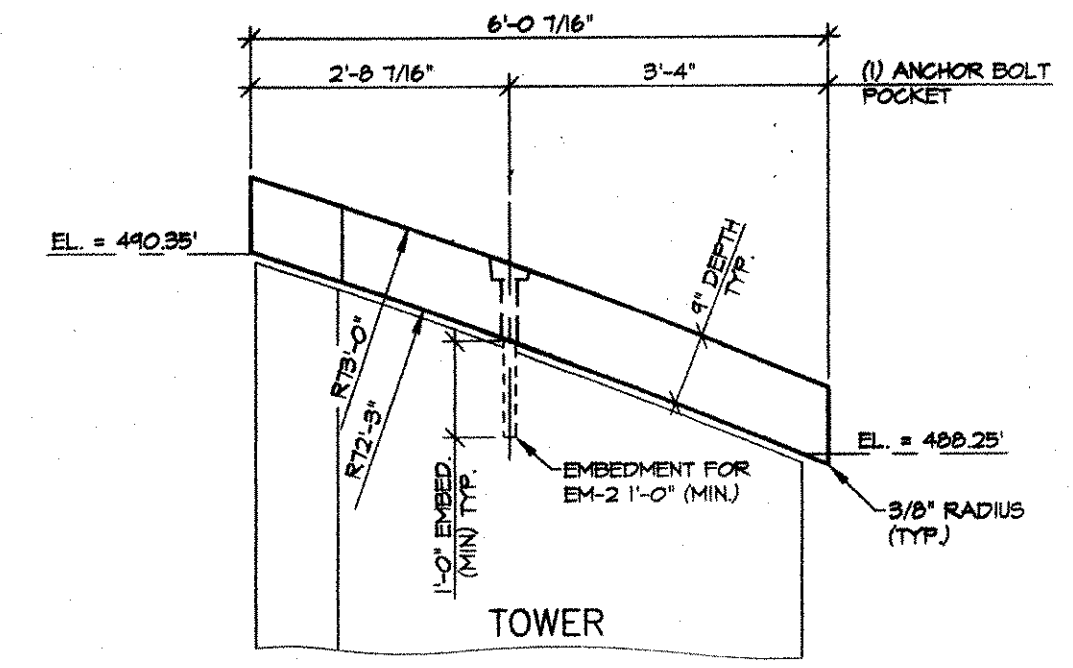


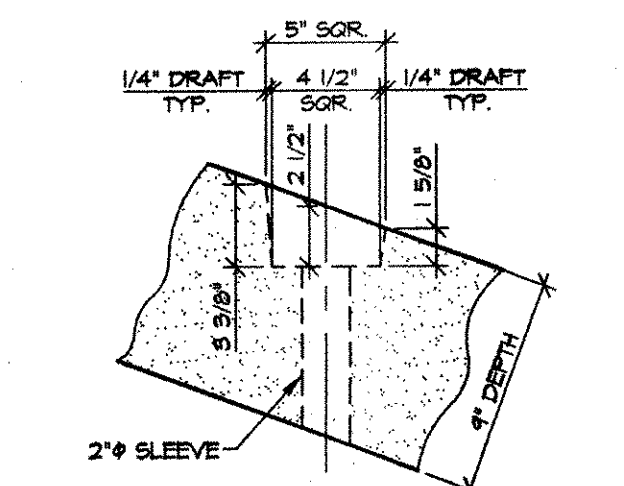
ABUTMENT #2 TOWER CAP - GEOMETRY PLAN
3/4" = 1'-0"



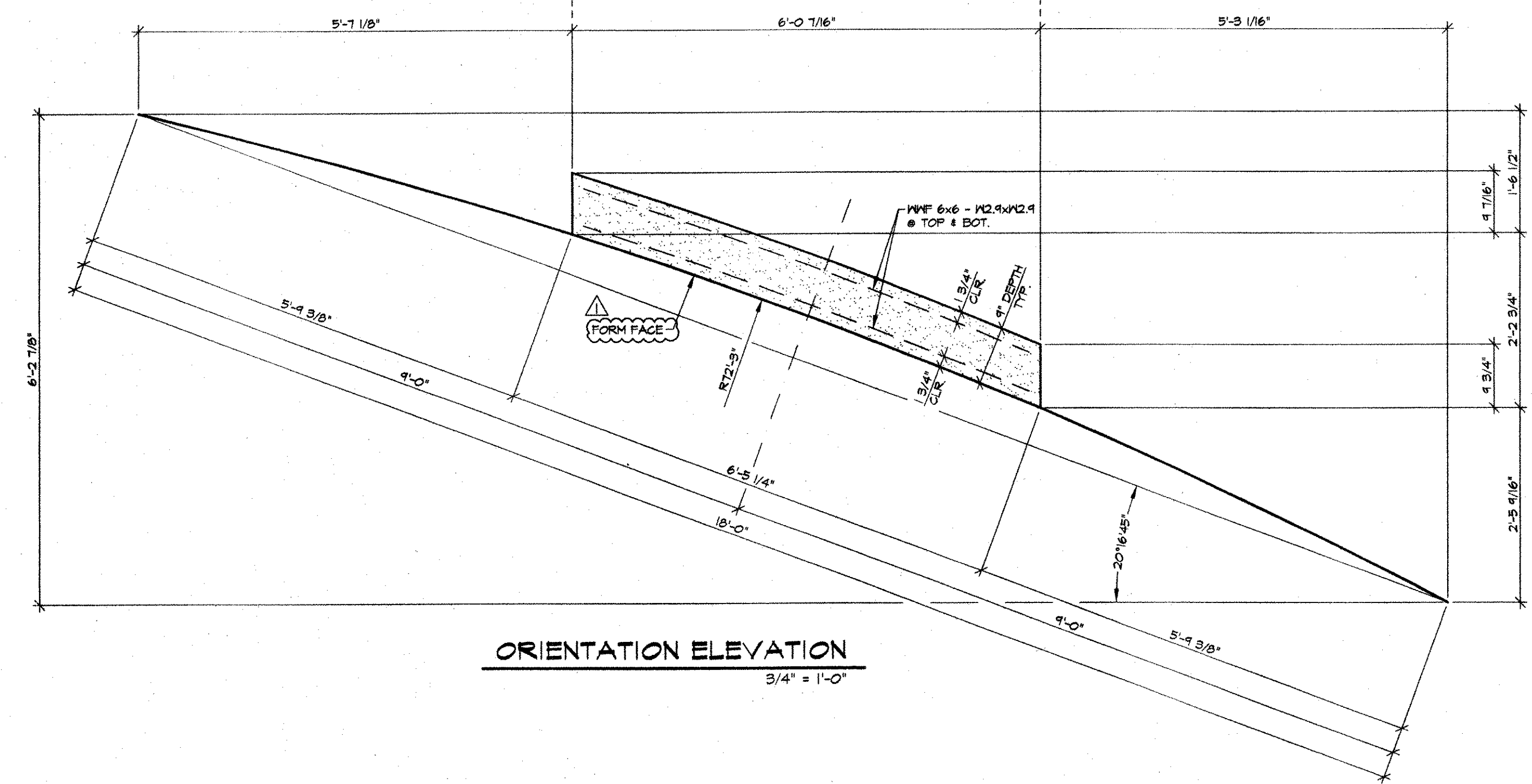
ABUTMENT #2 TOWER CAP - TRUE PLAN
1/2" = 1'-0"



ABUTMENT #2 TOWER CAP ELEVATION
1/2" = 1'-0"



POCKET DETAIL
1 1/2" = 1'-0"



ORIENTATION ELEVATION
3/4" = 1'-0"

RECEIVED
OK'D BY WAS OK'D BY _____
APR 26 2001
RESUBMIT _____ APPROVED
BY CPW DATE 5/20/01

SHOP NOTE
F_{ci} = 3000 PSI (MIN) @ STRIPPING
F_c = 5000 PSI (MIN) @ 28 DAYS

MARK: **R-C6** QTY.: 1 WT./TONS: 1.17 CU. YDS.: 0.58

MATERIALS LIST				
ITEM	MARK	QTY.	DESCRIPTION	REMARKS
1	EM-1	1	1/2" WASHER 1/2"x3"x3" (AASHTO 103, GR. 36) W/ (1) 1/2" HOLE (GALV.)	FOR ERECTION
2	EM-2	1	1 1/4" x 1-1/4" ANCHOR BOLT (GALV.) (ASTM A307, GR. C)	FOR ERECTION
3	EM-3	1	1 1/4" HEAVY HEX NUT (GALV.)	FOR ERECTION
4	L-1	4	1T x 4 3/4" SWIFT LIFT LIFTERS (DAYTON)	
5				
6				
7				
8				
9				
10				

NOTES:
1. ALL SURFACES OF THE PRECAST CAPS (EXCLUDING FORM FACE) SHALL BE GIVEN A RUBBED FINISH PER VAOT STD. SPECIFICATIONS SUB-SECTION 501.16(a)2.
2. ALL EDGES OF PRECAST CAPS SHALL BE FABRICATED TO BE VERTICAL IN THE FINAL ERECTED POSITION.

NO.	DATE	REVISION
1	4-9-01	REVISED FOR APPROVAL

DESIGNED:	E.J. BROD
CHECKED:	
APPROVED:	

DRAWN: B.M. LOPEZ
DESIGNED: E.J. BROD
CHECKED: _____
APPROVED: _____

J.P. CARRARA & SONS INC.
Precast & Prestress Manufacturer
2464 CASE STR., MOULBURY, VERMONT 05753
Phone: (802) 388-4361 Fax: (802) 388-9010

Double-Tees Hollow-Core Plank Flat Panels

BECK & BELLUCCI, INC.
10 SALISBURY ROAD, PO BOX 429
FRANKLIN, NEW HAMPSHIRE 03235

Project Name:
ROYALTON BRIDGE
BRZ 1444 (22)
ROYALTON, VERMONT

PIER TOWER CAP DETAILS

SCALE: **NOTED**
JOB #: **23111-00**
DATE: **2-20-01**
SHEET #: **PC6**