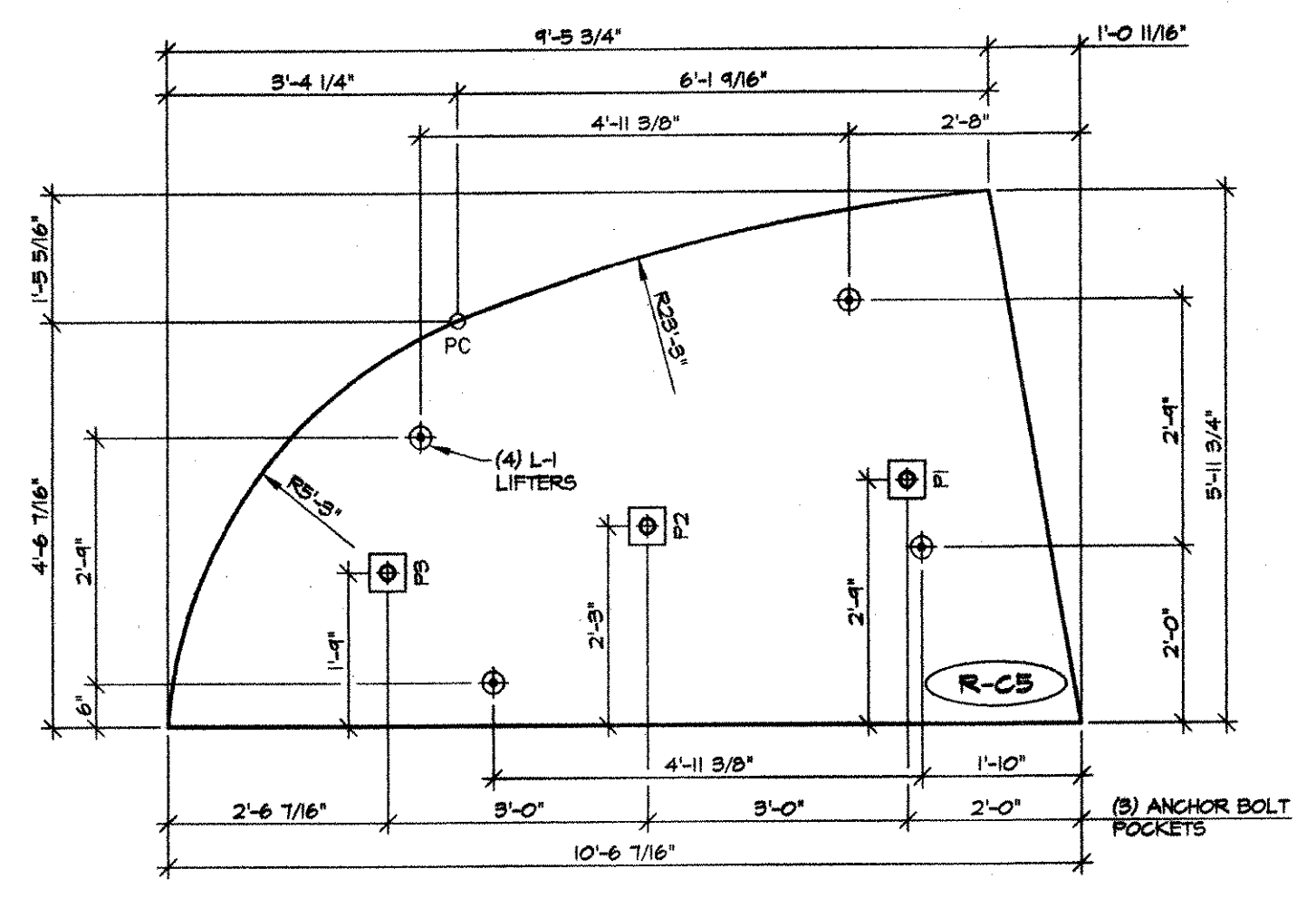
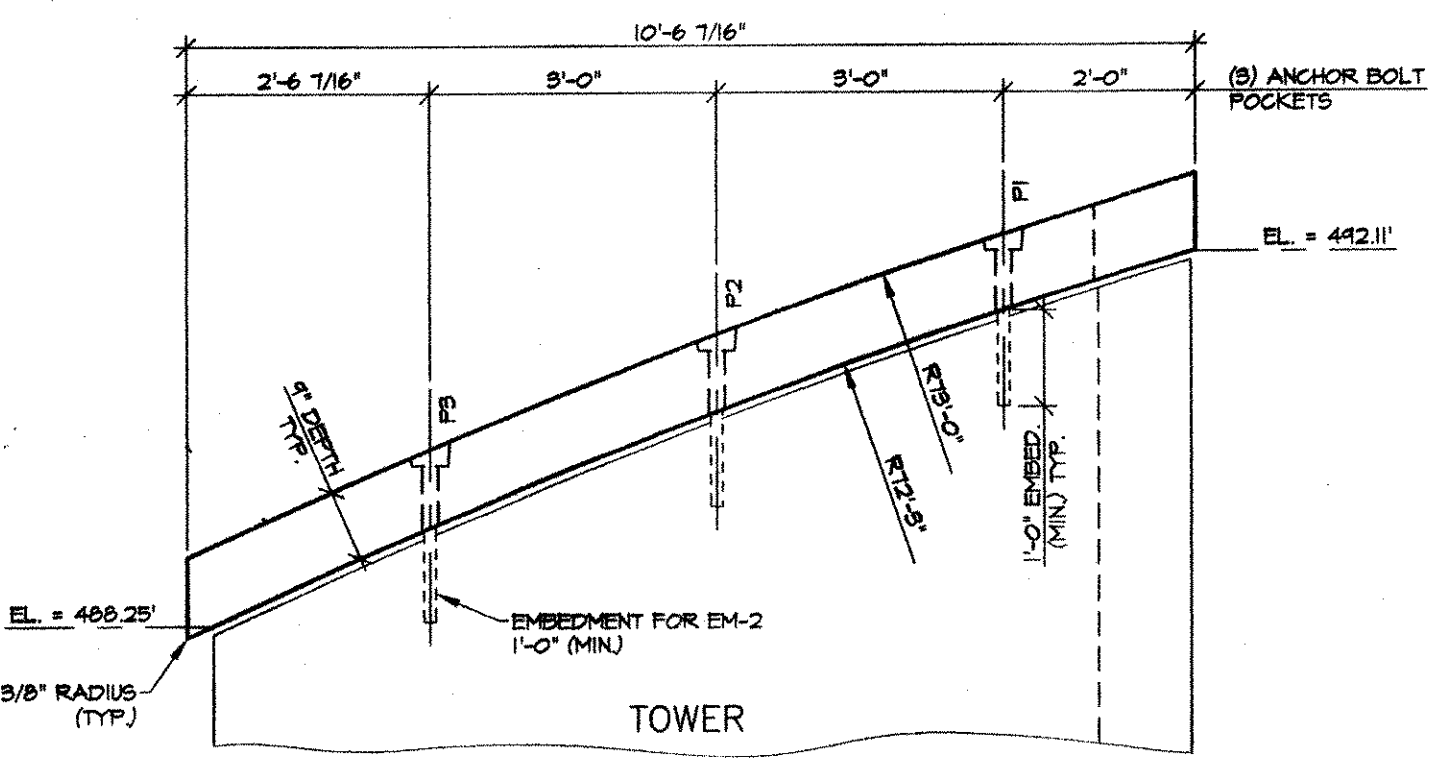


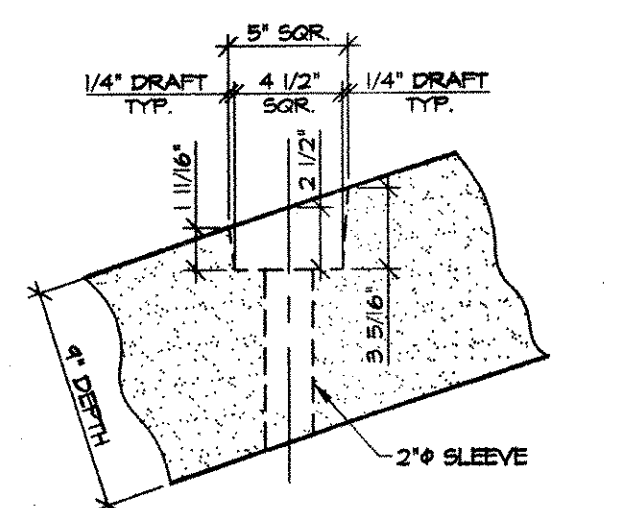
ABUTMENT #2 TOWER CAP - GEOMETRY PLAN
3/4" = 1'-0"



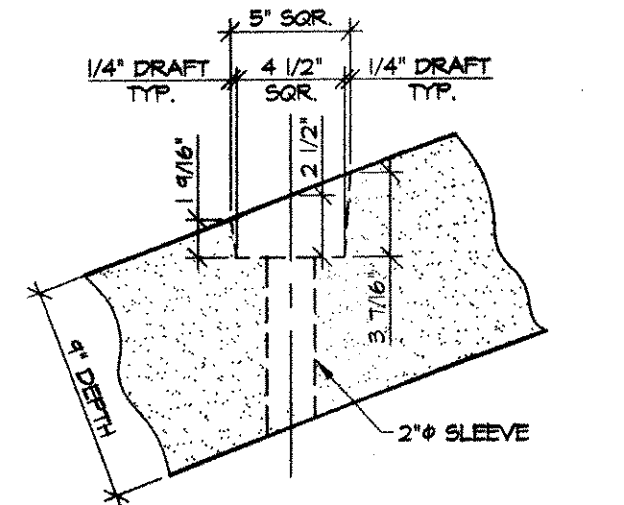
ABUTMENT #2 TOWER CAP - TRUE PLAN
1/2" = 1'-0"



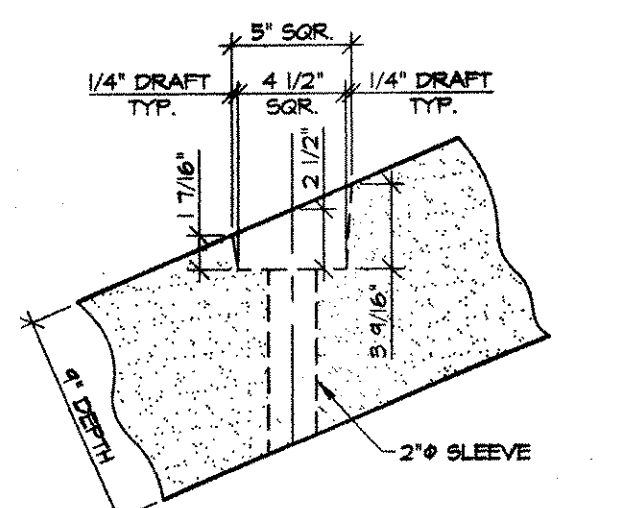
ABUTMENT #2 TOWER CAP ELEVATION
1/2" = 1'-0"



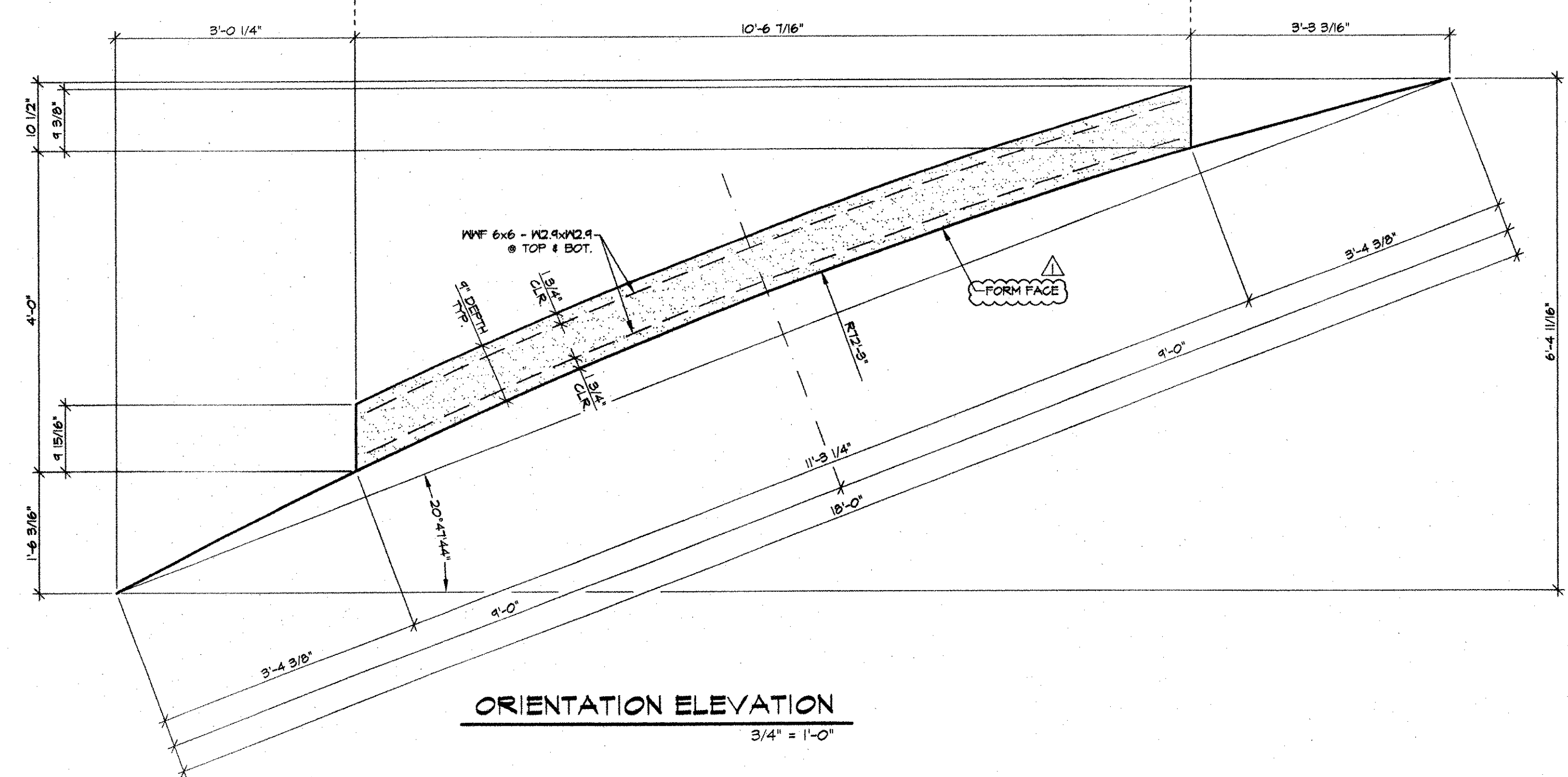
POCKET DETAIL - P1
1/2" = 1'-0"



POCKET DETAIL - P2
1/2" = 1'-0"



POCKET DETAIL - P3
1/2" = 1'-0"



ORIENTATION ELEVATION
3/4" = 1'-0"

RECEIVED
OK'D BY WBS OK'D BY _____
APR 26 2001
RESUBMIT _____ APPROVED
BY cpw DATE 5/21/01

SHOP NOTE:
F_{ci} = 3,000 PSI (MIN) @ STRIPPING
F_c = 5,000 PSI (MIN) @ 28 DAYS

MARK: R-C5 QTY.: 1 WT./TONS: 2.70 CU. YDS.: 1.33

MATERIALS LIST				
ITEM	MARK	QTY.	DESCRIPTION	REMARKS
1	EM-1	3	E WASHER 1/2"x3"x3" (AASHTO 183, GR. 36) W/ (1) 1/2" HOLE (GALV)	FOR ERECTION
2	EM-2	3	1 1/4" x 1-1/4" ANCHOR BOLT (GALV) (ASTM A307, GR. C)	FOR ERECTION
3	EM-3	3	1 1/4" HEAVY HEX NUT (GALV)	FOR ERECTION
4	L-1	4	1T x 4 3/4" SWIFT LIFT LIFTERS (DAYTON)	
5				
6				
7				
8				
9				
10				

NOTES:
1. ALL SURFACES OF THE PRECAST CAPS (EXCLUDING FORM FACE) SHALL BE GIVEN A RUBBED FINISH PER VAOT STD. SPECIFICATIONS SUB-SECTION 501.16(a)2.
2. ALL EDGES OF PRECAST CAPS SHALL BE FABRICATED TO BE VERTICAL IN THE FINAL ERECTED POSITION.

NO.	DATE	REVISION
1	4-3-01	REVISED FOR APPROVAL

DRAWN:	B.M. LOPEZ
DESIGNED:	E.J. BROD
CHECKED:	
APPROVED:	

J.P. CARRARA & SONS INC.
Precast & Prestress Manufacturer
2484 CASE STR., MIDDLEBURY, VERMONT 05753
Phone: (802) 388-8361
Fax: (802) 388-9010

BECK & BELLUCCI, INC.
10 SALISBURY ROAD, PO BOX 429
FRANKLIN, NEW HAMPSHIRE 03235

Project Name:
ROYALTON BRIDGE
BRZ 1444 (22)
ROYALTON, VERMONT

SCALE: NOTED
JOB #: 23111-00
DATE: 2-20-01
SHEET #: PCS

PIER TOWER CAP DETAILS