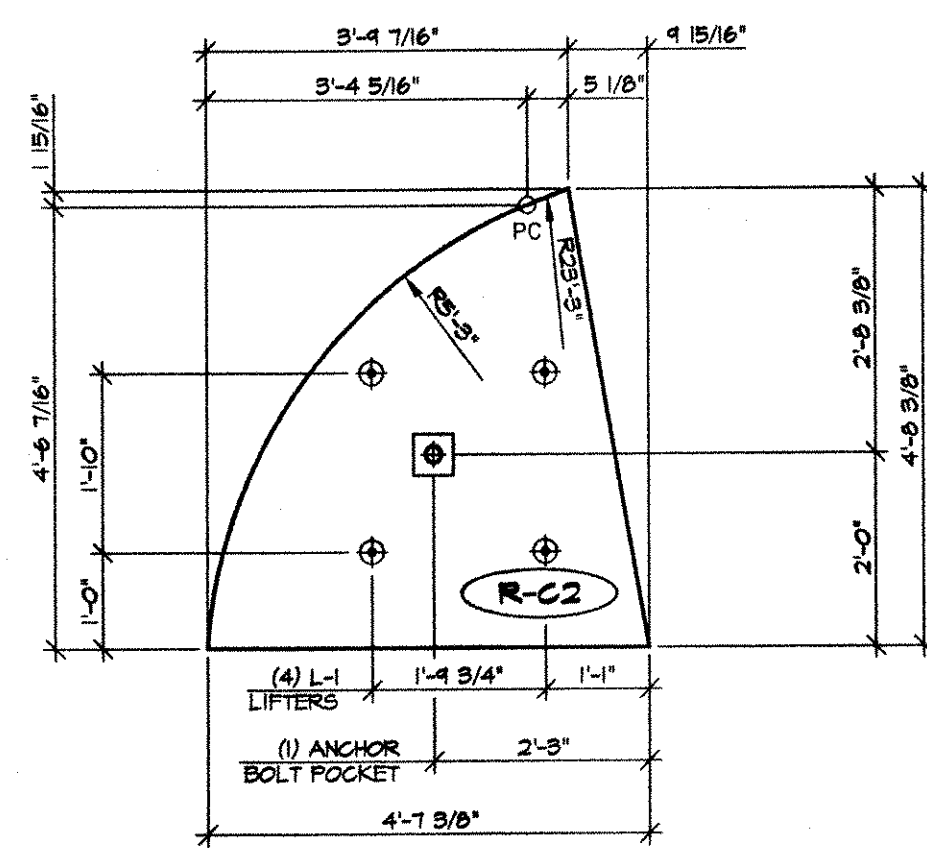
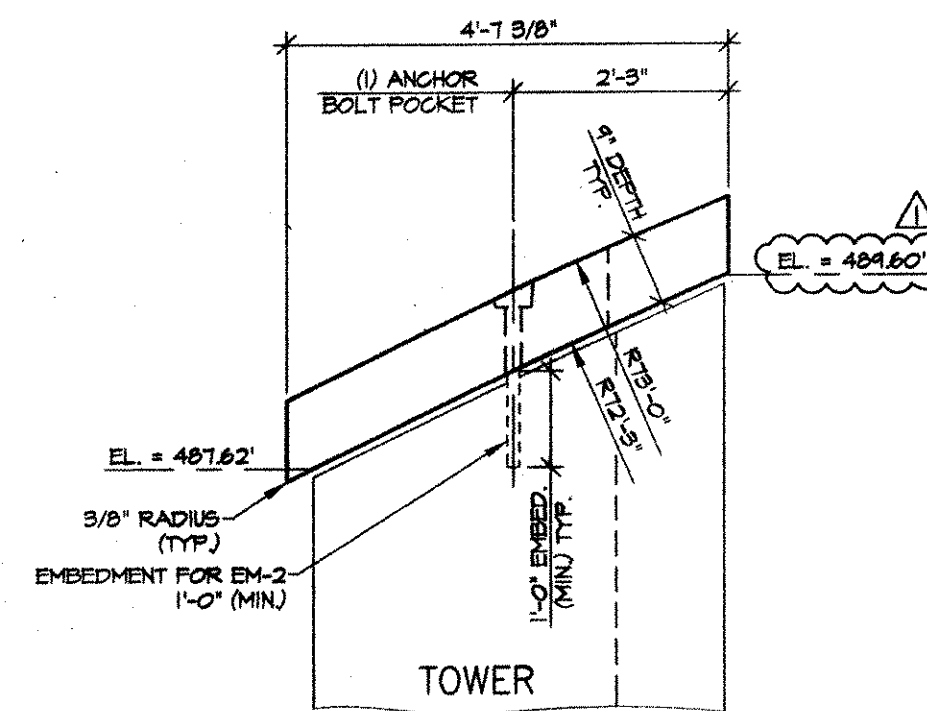


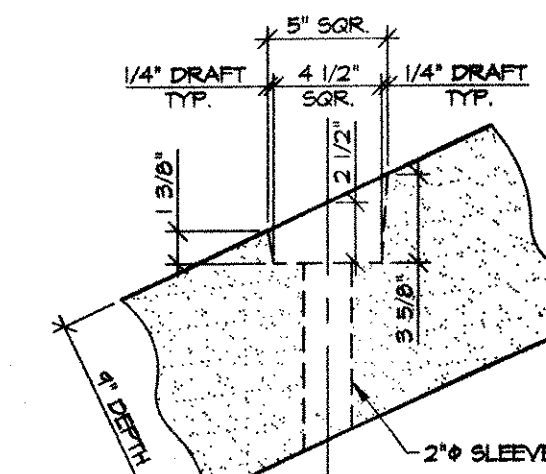
ABUTMENT #1 TOWER CAP - GEOMETRY PLAN
3/4" = 1'-0"



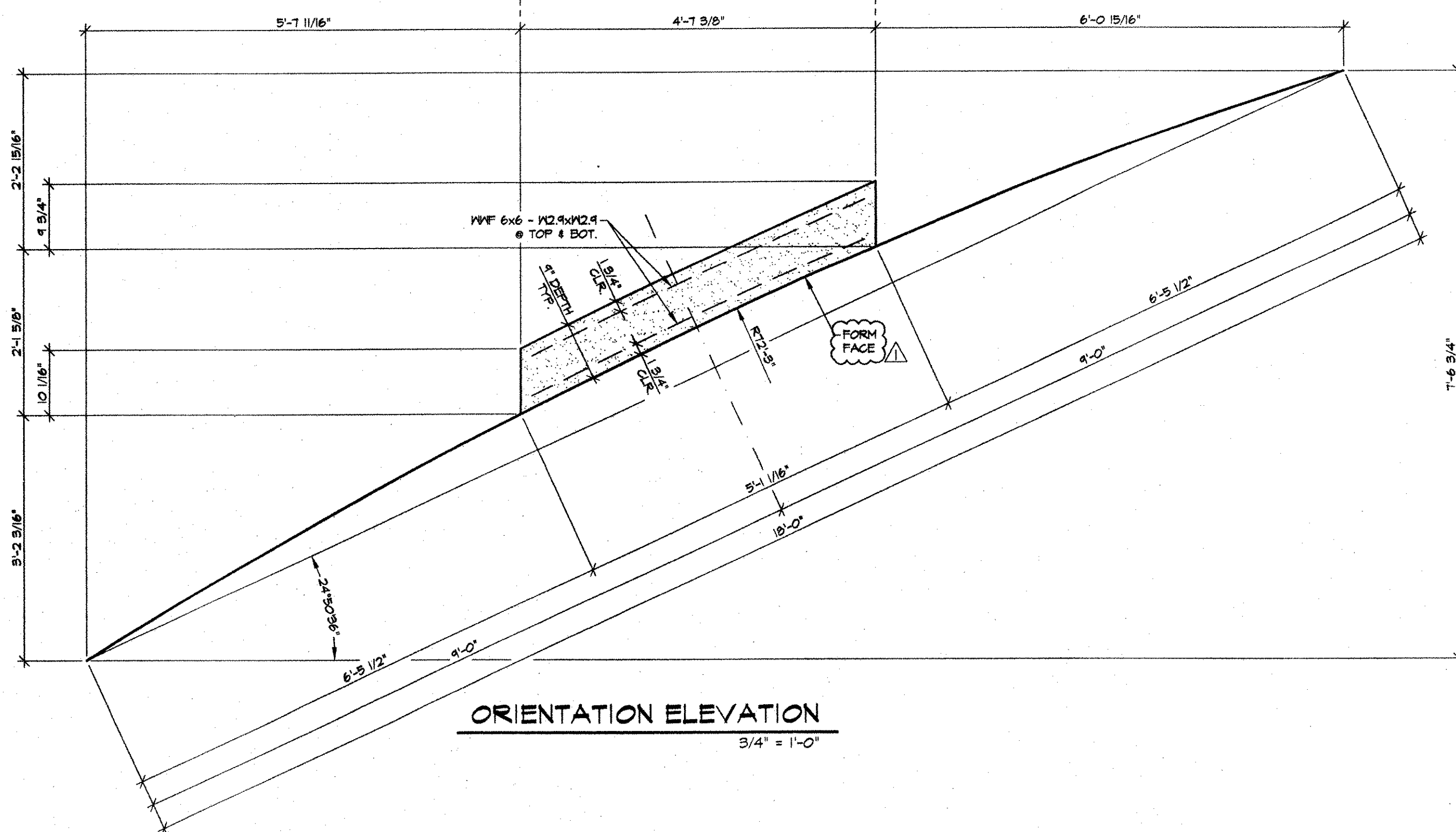
ABUTMENT #1 TOWER CAP - TRUE PLAN
1/2" = 1'-0"



ABUTMENT #1 TOWER CAP ELEVATION
1/2" = 1'-0"



POCKET DETAIL
1 1/2" = 1'-0"



ORIENTATION ELEVATION
3/4" = 1'-0"

RECEIVED
OK'D BY WJ OK'D BY _____
APR 26 2001
RESUBMIT _____ APPROVED
BY CPW DATE 5/17/01

SHOP NOTE:
f_c = 5000 PSI (MIN.) @ STRIPPING
f_c = 5000 PSI (MIN.) @ 28 DAYS

MARK: R-C2 QTY.: 1 WT./TONS: 0.73 CU. YDS.: 0.36

| MATERIALS LIST | | | | |
|----------------|------|------|--|--------------|
| ITEM | MARK | QTY. | DESCRIPTION | REMARKS |
| 1 | EM-1 | 1 | R. WASHER 1/2"x3"x3" (AASHTO 183, GR. 36) W/ (1) 1/2" HOLE (GALV.) | FOR ERECTION |
| 2 | EM-2 | 1 | 1 1/4" x 1-9" ANCHOR BOLT (GALV.) (ASTM A307, GR. C) | FOR ERECTION |
| 3 | EM-3 | 1 | 1 1/4" HEAVY HEX NUT (GALV.) | FOR ERECTION |
| 4 | L-1 | 4 | 1T x 4 3/4" SWIFT LIFT LIFTERS (DAYTON) | |
| 5 | | | | |
| 6 | | | | |
| 7 | | | | |
| 8 | | | | |
| 9 | | | | |
| 10 | | | | |

NOTES:
1. ALL SURFACES OF THE PRECAST CAPS (EXCLUDING FORM FACE) SHALL BE GIVEN A RUBBED FINISH PER VAOT STD. SPECIFICATIONS SUB-SECTION 501.16(a)2.
2. ALL EDGES OF PRECAST CAPS SHALL BE FABRICATED TO BE VERTICAL IN THE FINAL ERECTED POSITION.

| NO. | DATE | REVISION |
|-----|--------|----------------------|
| 1 | 4-9-01 | REVISED FOR APPROVAL |

DRAWN: B.M. LOPEZ
DESIGNED: E.J. BROD
CHECKED: _____
APPROVED: _____

J.P. CARRARA & SONS INC.
Precast & Prestress Manufacturer
2484 CASE STR., MIDDLEBURY, VERMONT 05753
Phone: (802) 388-6361 Fax: (802) 388-9010

Double-Tees Hollow-Core Plank Flat Panels

BECK & BELLUCCI, INC.
10 SALISBURY ROAD, PO BOX 429
FRANKLIN, NEW HAMPSHIRE 03235

Project Name:
ROYALTON BRIDGE
BRZ 1444 (22)
ROYALTON, VERMONT

PIER TOWER CAP DETAILS

SCALE: NOTED
JOB #: 23111-00
DATE: 2-20-01
SHEET #: PC2