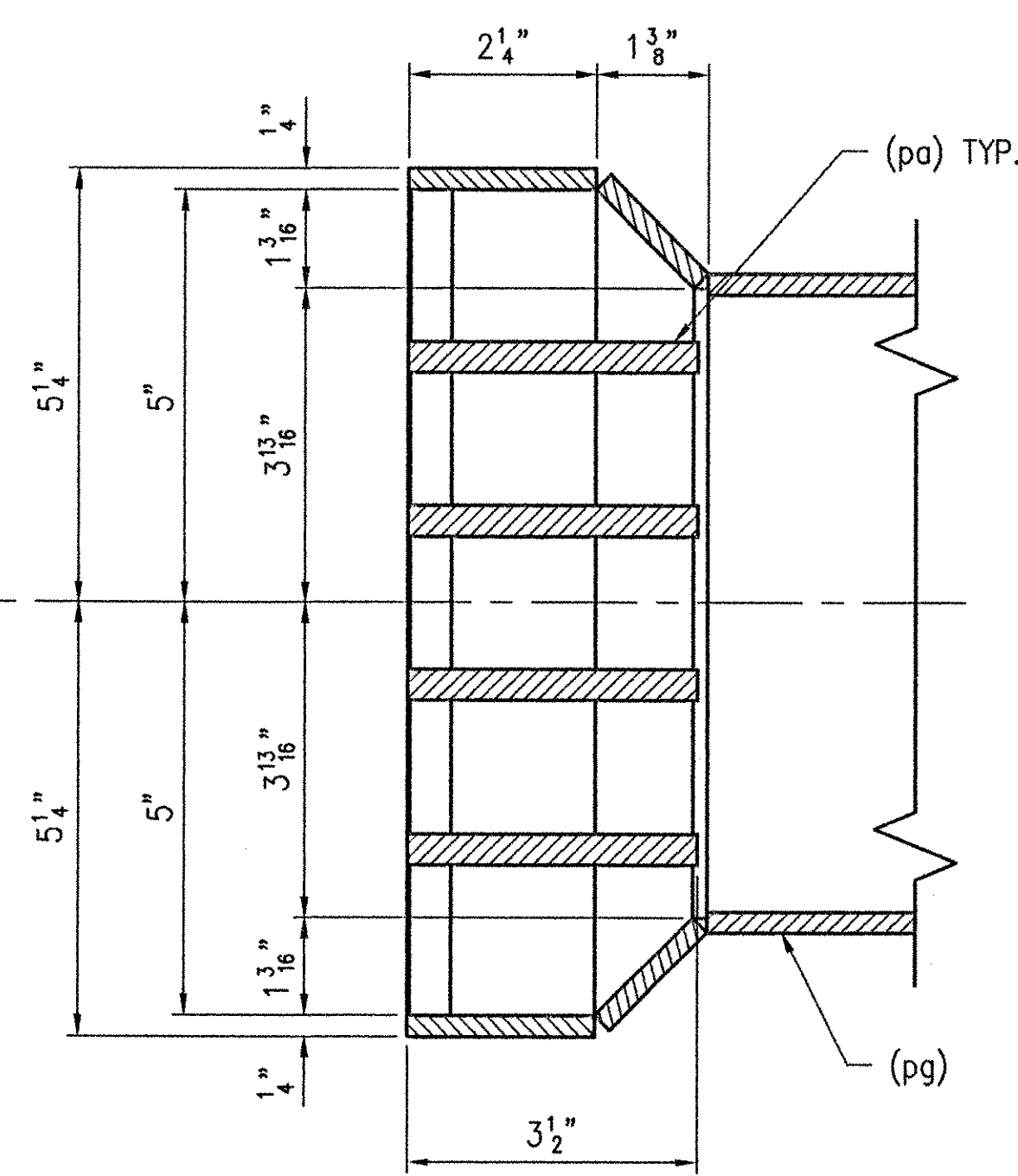
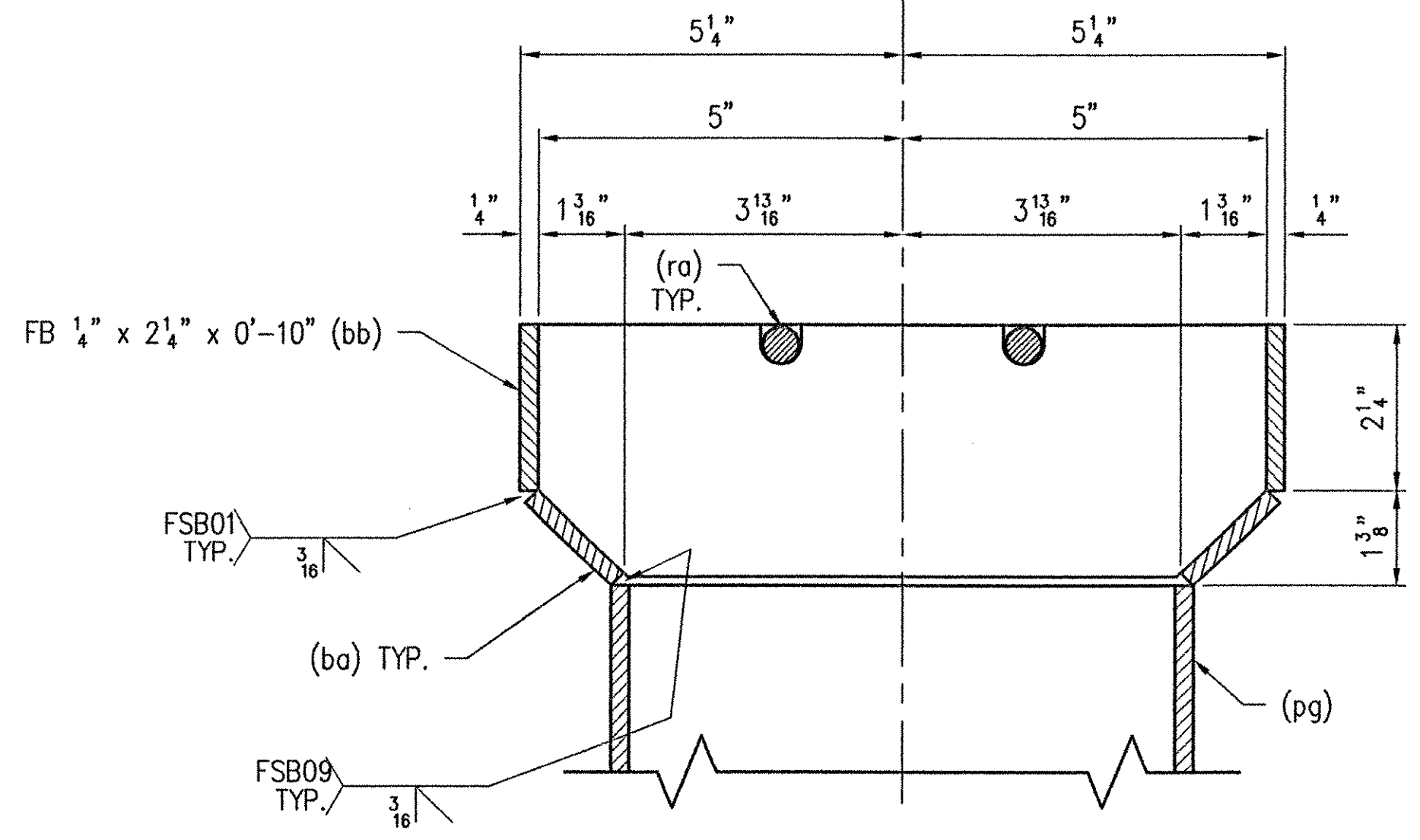


DETAIL "B"



SECTION N-N



SECTION M-M

LINE NO.	REQD.	DESCRIPTION	LENGTH	MK	REMARKS	PART NO.
1	1	DOWNSPOUT(S)	11'-9 1/8"	4A	HDG	
2	4	R 1/4" x 1 11/16"	A36 0'-10"	ba	SHAPE CUT	19-12
3	4	FB 1/4" x 2 1/4"	A36 0'-10"	bb		16-30
4	4	R 3/8" x 3 1/2"	A36 0'-10"	pa	SHAPE CUT	19-14
5	2	RB 1/2"	A36 0'-10"	ra		18-3
6	4	R 1/4" x 8 1/8"	A36 1'-0"	bh		19-12
7	1	TS 8" x 8" x .250"	A500-B 2'-5 1/8"	pg		22-5
8	1	TS 8" x 8" x .250"	A500-B 2'-11 3/8"	ph		22-5
9	1	TS 8" x 8" x .250"	A500-B 8'-3 1/4"	pk		22-5
10	1	TS 8" x 8" x .250"	A500-B 5'-6 9/16"	pm		22-5
11						
12	1	DOWNSPOUT(S)	12'-2 1/2"	4B	HDG	
13	4	R 1/4" x 1 11/16"	A36 0'-10"	ba	SHAPE CUT	19-12
14	4	FB 1/4" x 2 1/4"	A36 0'-10"	bb		16-30
15	4	R 3/8" x 3 1/2"	A36 0'-10"	pa	SHAPE CUT	19-14
16	2	RB 1/2"	A36 0'-10"	ra		18-3
17	4	R 1/4" x 8 1/8"	A36 1'-0"	bh		19-12
18	1	TS 8" x 8" x .250"	A500-B 2'-5 1/8"	pg		22-5
19	1	TS 8" x 8" x .250"	A500-B 2'-11 3/8"	ph		22-5
20	1	TS 8" x 8" x .250"	A500-B 8'-9 1/4"	pn		22-5
21	1	TS 8" x 8" x .250"	A500-B 5'-6 9/16"	pm		22-5

SEE SHEET NO. 2 FOR GENERAL NOTES.
WORK THIS SHEET WITH SHEET NO. 2.

REV.	DESCRIPTION	DATE	INT.
	ANY AND ALL BACKCHARGES WILL BE REJECTED UNLESS WRITTEN CONSENT IS GIVEN BY LEWIS ENGINEERING COMPANY PRIOR TO ANY WORK PERFORMED FOR OUR ACCOUNT. SUCH REJECTION MEANS THAT INVOICES WILL NOT BE HONORED OR DEDUCTIONS FROM PAYMENT WILL BE CHARGED BACK.		
 LEWIS ENGINEERING COMPANY 4201 NOREX DRIVE - CHASKA, MINNESOTA 55318 - (612) 388-3000			
SHOP	PROJECT	ROYALTON ~ ROUTE NO. T.H. 1 ~ C.L. 1 BRIDGE NO. 3	
	STATE PROJECT	AC BRZ 1444(22)	
	FEDERAL PROJECT	-	
APPROVAL	CUSTOMER	BECK & BELLUCCI, INC.	
	LOCATION	WINDSOR COUNTY, VT	
	DESCRIPTION	SCUPPER(S) DETAILS	
	FOR DATE		
	PRINTS ISSUED		
		SHEET NO. 5 OF 5	Job. No. : 2034.1236.1

RECEIVED
 CK'D BY *CPW* CK'D BY *WJS*
 JUN 11 2001
 RESUBMIT APPROVED
 BY *CPW* DATE *7/3/01*

SHOP NOTE:
 SEAL WELD ALL ACCESSIBLE JOINTS FOR GALVANIZING.

Orig.
 W.P. chkd
 Drawn By JMB
 Chk'd. By TSF
 Date: 5/25/01