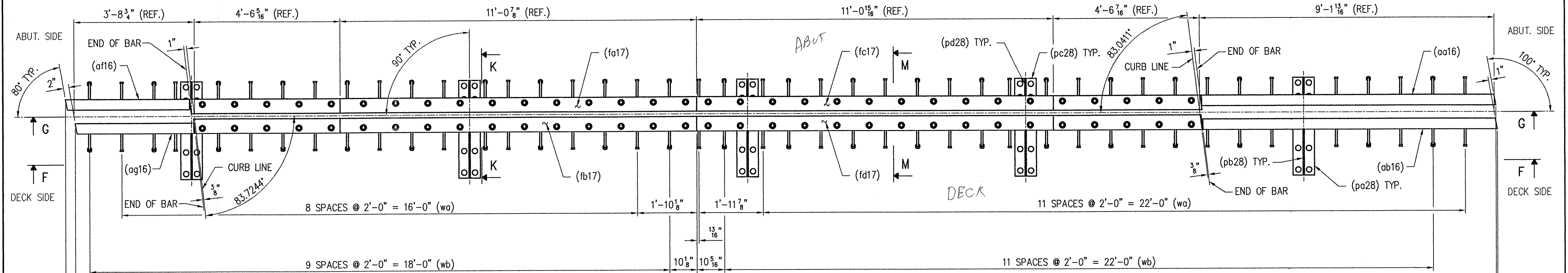


NOTE: SEE SHEET NO. 18 FOR CURB ASSEMBLY ON THIS SIDE.

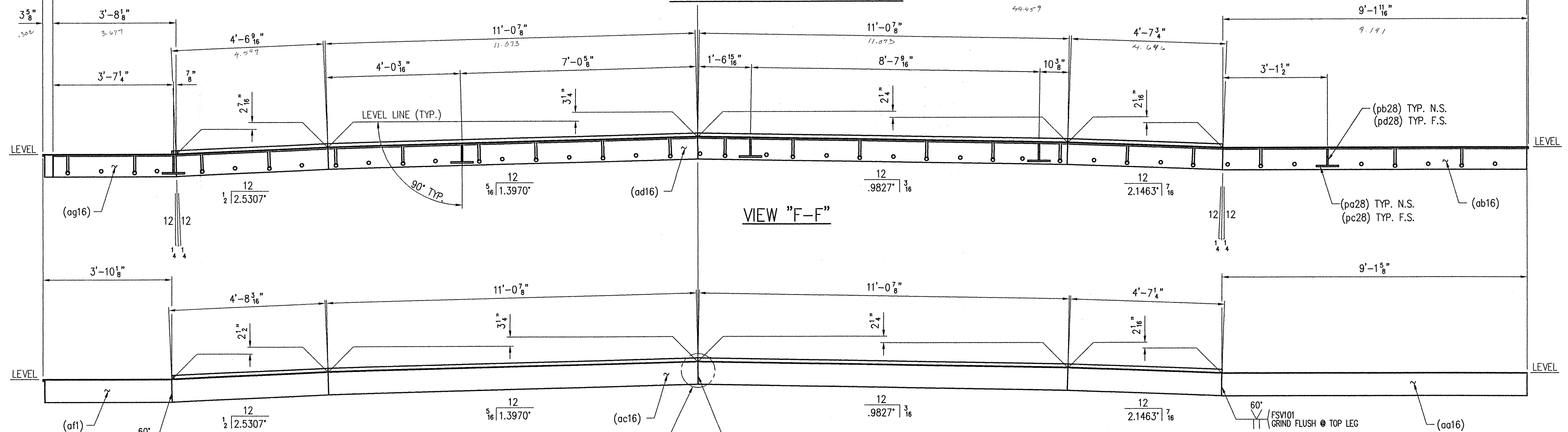
NOTE: SEE SHEET NO. 23 FOR CURB ASSEMBLY ON THIS SIDE.



SHOP NOTE:
ADJUST STUD SPACING AS REQUIRED TO AVOID INTERFERENCE
WITH SUPPORTS AND LOOP FERRULE INSERTS.

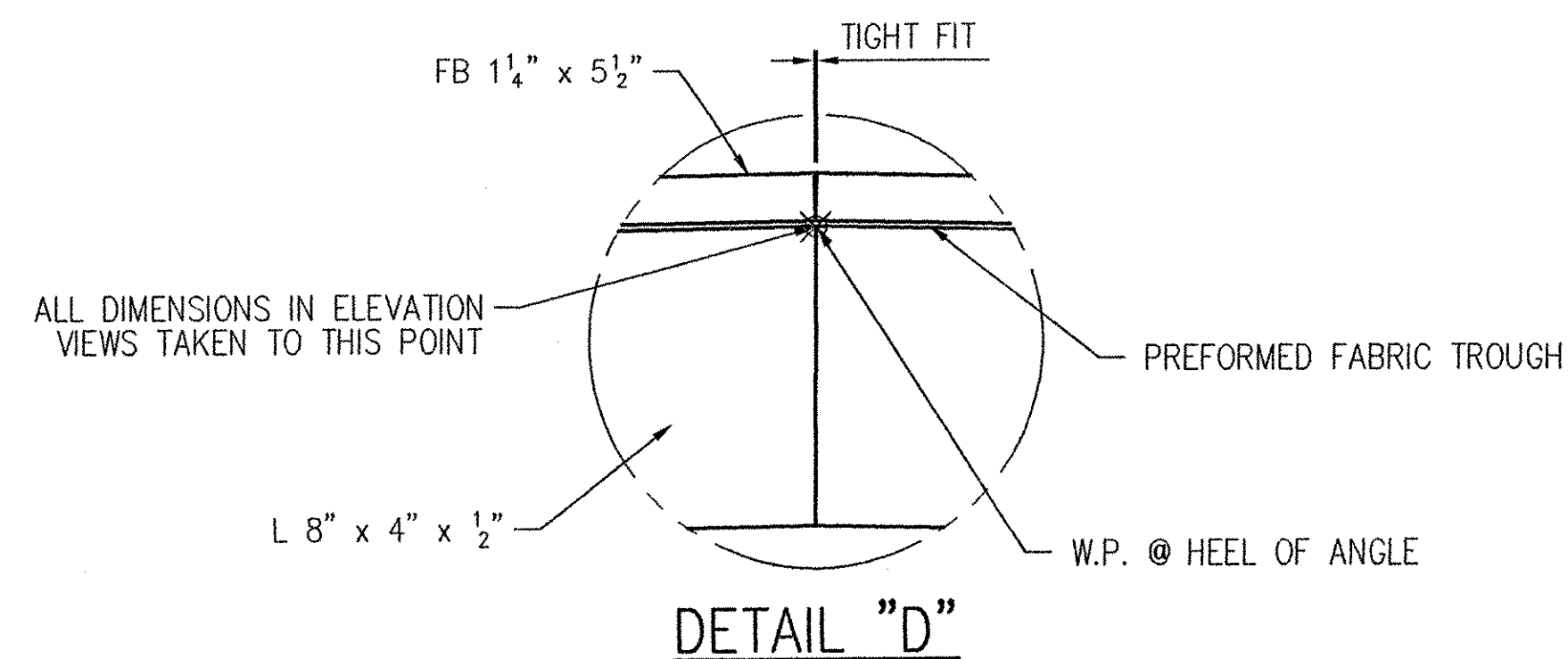
SHOP NOTE:
ADJUST STUD SPACING AS REQUIRED TO AVOID INTERFERENCE
WITH SUPPORTS AND LOOP FERRULE INSERTS.

PLAN VIEW
1 - EXPANSION JOINT - 16A



FSV101
GRIND FLUSH @ TOP LEG

SEE DETAIL "D"
CUT 8\"/>



SHOP NOTE:
ALL WELDS SHOWN IN VIEW "G-G"
ARE TYP. IN VIEW "F-F". ALL MITER
CUTS IN VIEW "F-F" ARE ALSO TYP.
IN VIEW "G-G". IN ADDITION, ALL
DIMENSIONS FOR "SUPPORT PLATES"
SHOWN IN VIEW "F-F" ARE TYPICAL
IN VIEW "G-G" ALSO. SEAL ALL
ACCESSIBLE JOINTS FOR GALVANIZING.

RECEIVED
O.K'D BY: [Signature] O.K'D BY: [Signature]
JAN 21 2002
RESUBMIT APPROVED BY: [Signature]
BY: CPW DATE: 1/21/02

-SEE SHEET NO. 30 FOR GENERAL NOTES.
-HIDDEN LINES REMOVED FOR CLARITY.
-SHIPPING ANGLES REMOVED FOR CLARITY.
-CURB ASSEMBLY NOT SHOWN FOR CLARITY.
-ALL DIMENSIONS SHOWN IN THE ELEVATION
VIEWS ARE MEASURED ALONG THE HEEL OF
THE L 8" x 4" x 1/2"
-FOR SECTION "K-K" AND SECTION "M-M"
SEE SHEET NO. 17.

GENERAL REVISION PER APPROVAL		1/11/02	JMB
REV.	DESCRIPTION	DATE	INT.
ANY AND ALL BACKCHARGES WILL BE REJECTED UNLESS WRITTEN CONSENT IS GIVEN BY LEWIS ENGINEERING COMPANY PRIOR TO ANY WORK PERFORMED FOR OUR ACCOUNT. SUCH REJECTION MEANS THAT INVOICES WILL NOT BE HONORED OR DEDUCTIONS FROM PAYMENT WILL BE CHARGED BACK.			
LEWIS ENGINEERING COMPANY 4201 NOREX DRIVE - CHASKA, MINNESOTA 55318 - (952) 368-3000			
PROJECT	ROYALTON / RTE. NO. TH 1, CL 1 BRIDGE NO. 3		
STATE PROJECT	AC BRZ 1444(22)		
FEDERAL PROJECT	-		
CUSTOMER	BECK & BELLUCCI, INC.		
LOCATION	WINDSOR COUNTY, VT		
DESCRIPTION	EXPANSION JOINT DETAILS ABUTMENT NO. 1		
L.E.C. 16 OF 30		SHEET NO. 1 OF 15	Job. No. : 2034.1042.1

W.P. ch'k'd
Drawn By JMB
Chk'd By TSF
Date: 12/20/01