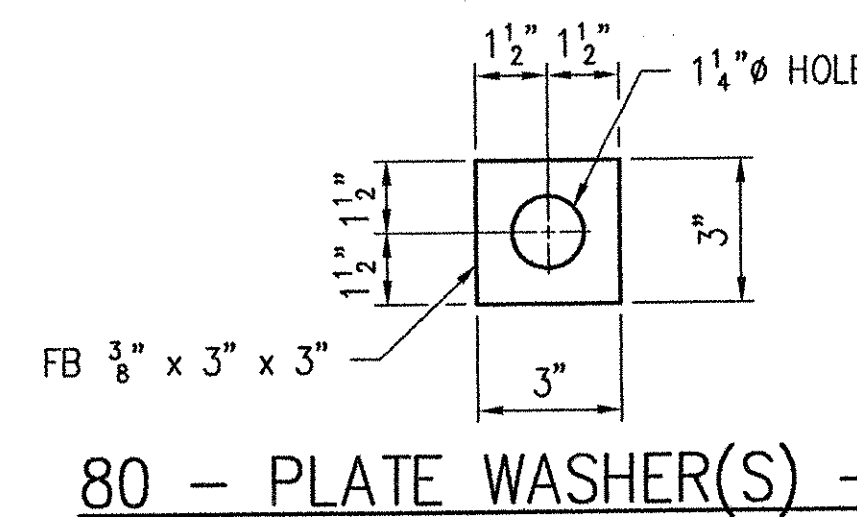
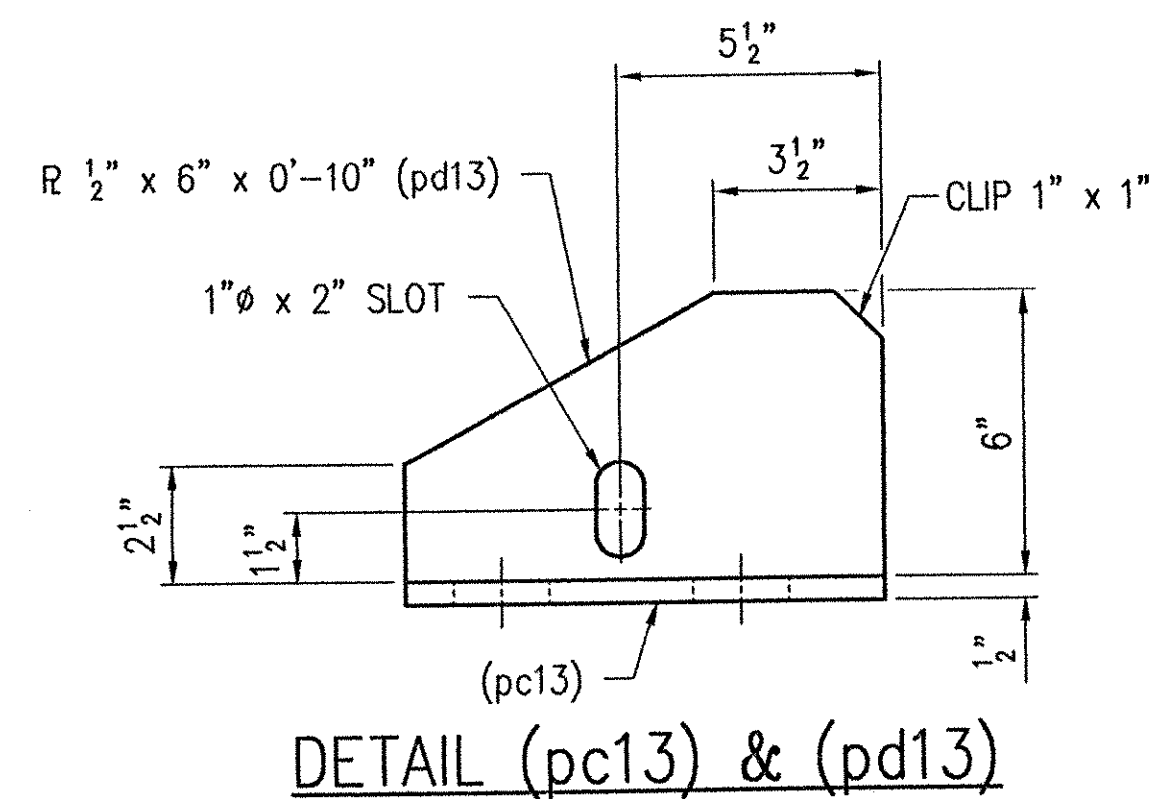
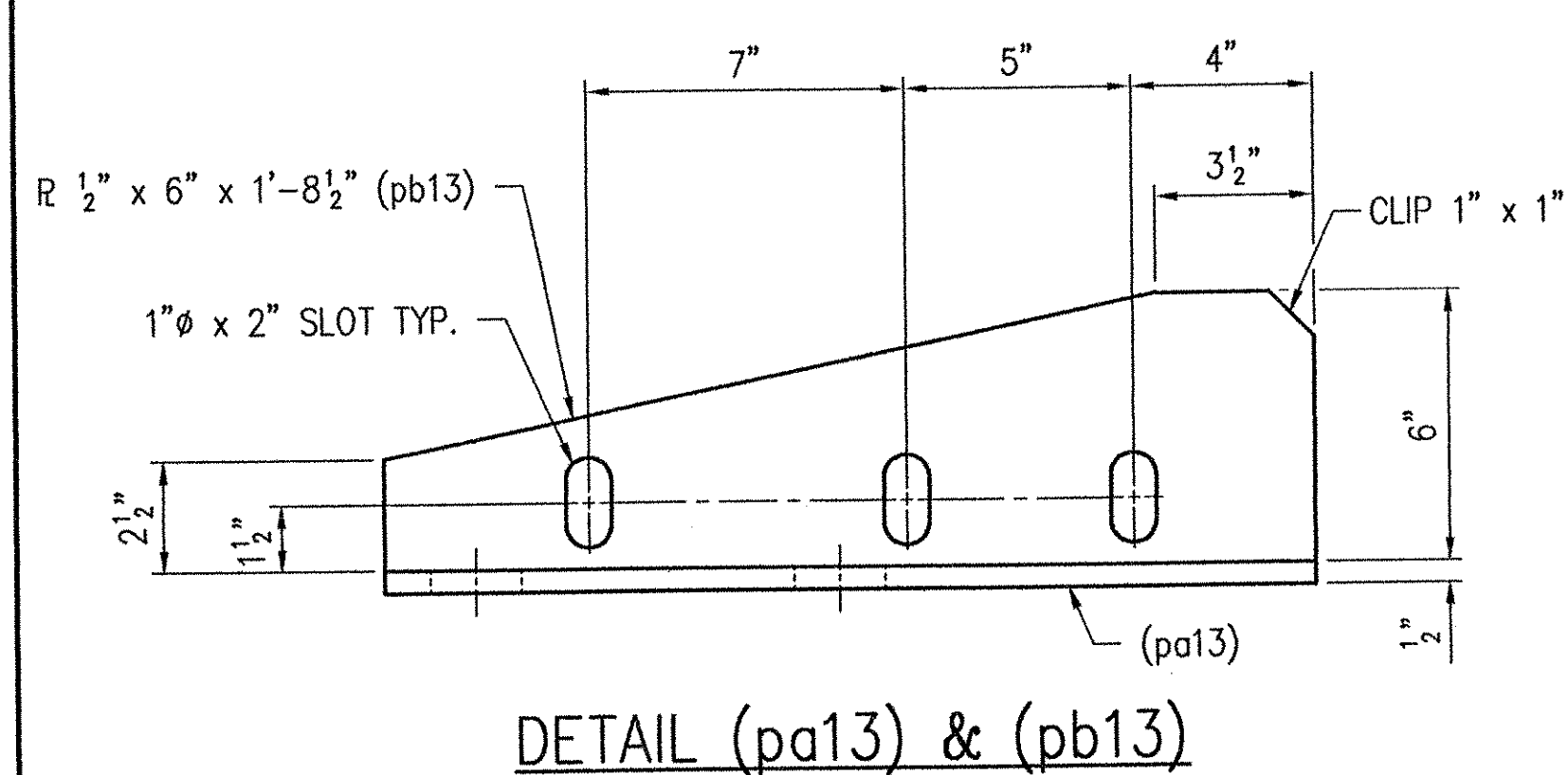
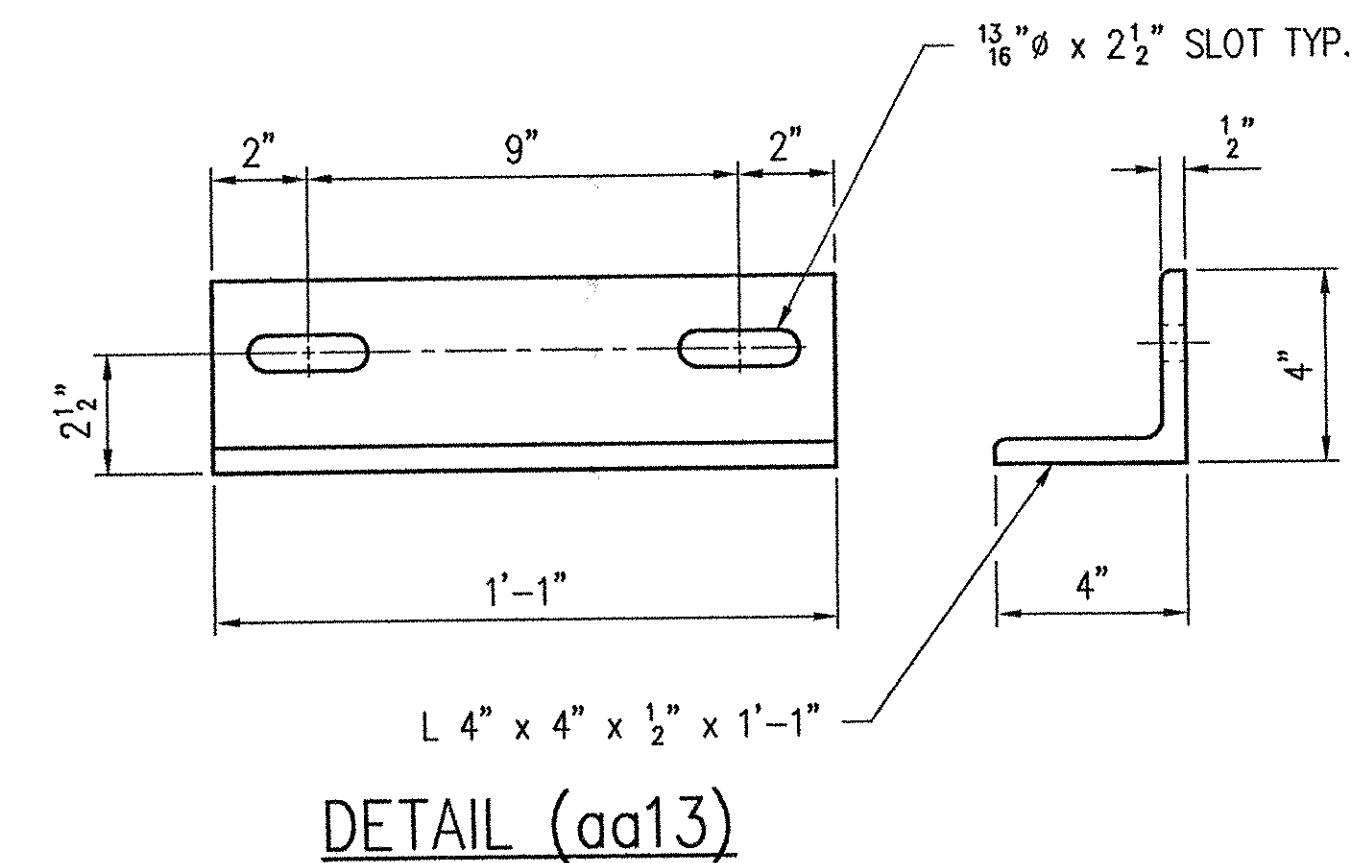
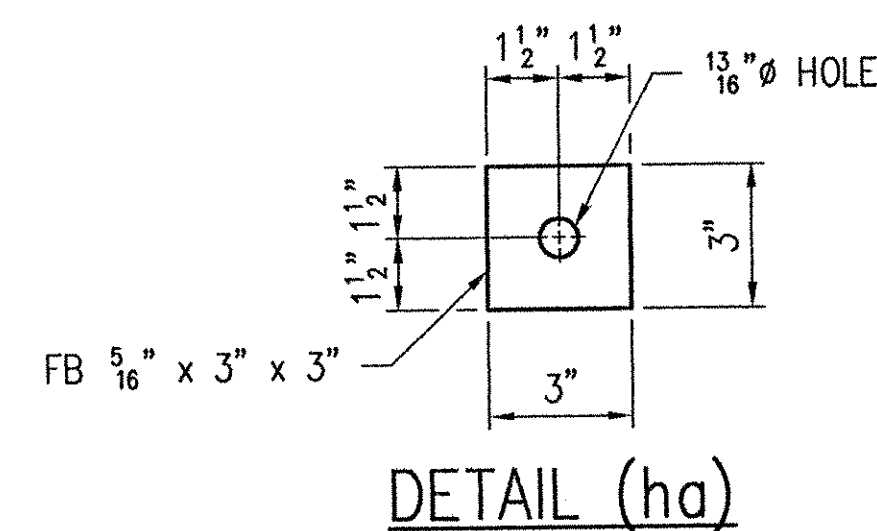
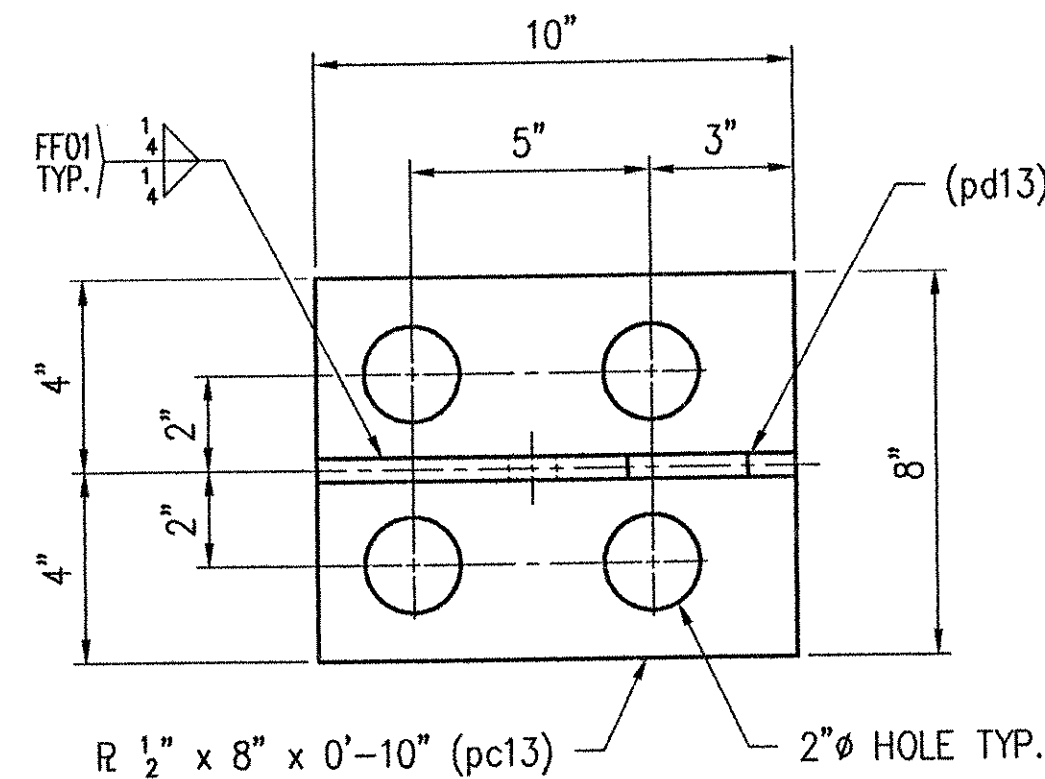
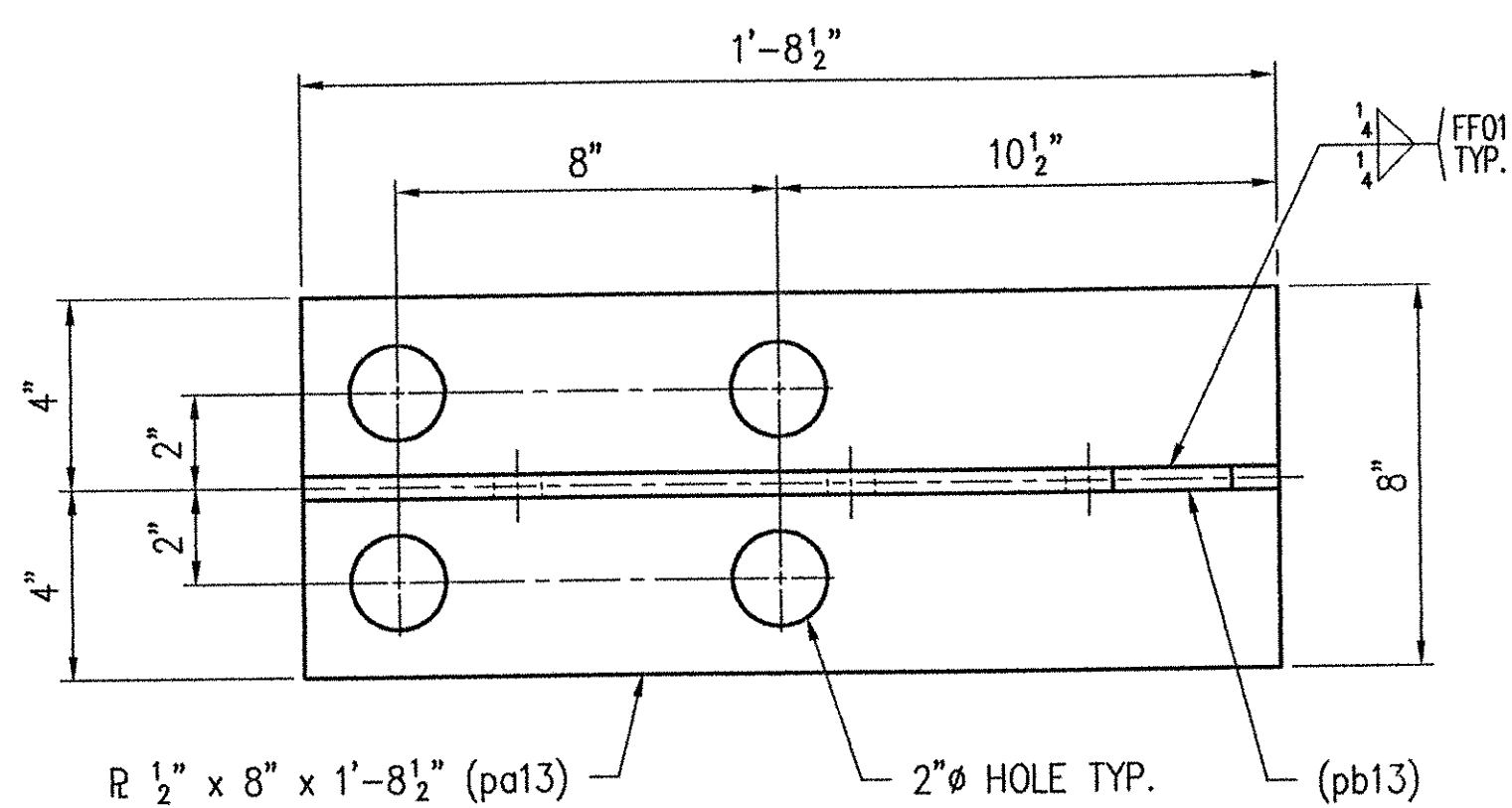


1 - SUB-ASSEMBLY - 13A

SHOP NOTE:
SEE SHEET NO. 15 OF 15 FOR
FOLDED TROUGH END DETAILS.

SHOP NOTE:
A 1/4" x 1" x 7" STRIP OF PREFORMED
FABRIC (nb13) SHALL BE CEMENTED TO THE
BOTTOM OF THE FABRIC TROUGH. USE AN
ADHESIVE APPROVED BY THE MANUFACTURER.
THIS WILL SERVE AS A DRIP BEAD.



80 - PLATE WASHER(S) - 13B

SEE SHEET NO. 15 FOR GENERAL NOTES.

REV.	DESCRIPTION	DATE	INT.
	GENERAL REVISION PER APPROVAL.	1/3/02	JMB
ANY AND ALL BACKCHARGES WILL BE REJECTED UNLESS WRITTEN CONSENT IS GIVEN BY LEWIS ENGINEERING COMPANY PRIOR TO ANY WORK PERFORMED FOR OUR ACCOUNT. SUCH REJECTION MEANS THAT INVOICES WILL NOT BE HONORED OR DEDUCTIONS FROM PAYMENT WILL BE CHARGED BACK.			
 4201 NOREX DRIVE - CHASKA, MINNESOTA 55318 - (952) 368-3000		PROJECT	ROYALTON / RTE. NO. TH 1, CL 1 BRIDGE NO. 3
		STATE PROJECT	AC BRZ 1444(22)
 W.P. chk'd Drawn By JMB Chk'd. By TSF Date: 12/5/01		FEDERAL PROJECT	
		CUSTOMER	BECK & BELLUCCI, INC.
PROJECT STATE PROJECT FEDERAL PROJECT CUSTOMER LOCATION DESCRIPTION ABUTMENT NO. 2		LOCATION	WINDSOR COUNTY, VT
		DESCRIPTION	EXPANSION JOINT DETAILS
L.E.C. 13 OF 30		SHEET NO. 13 OF 15	Job. No.: 2034.1042.1

RECEIVED
CHK'D BY LWS
JAN 11 2002
RESUBMIT APPROVED
BY cpw DATE 1/11/02