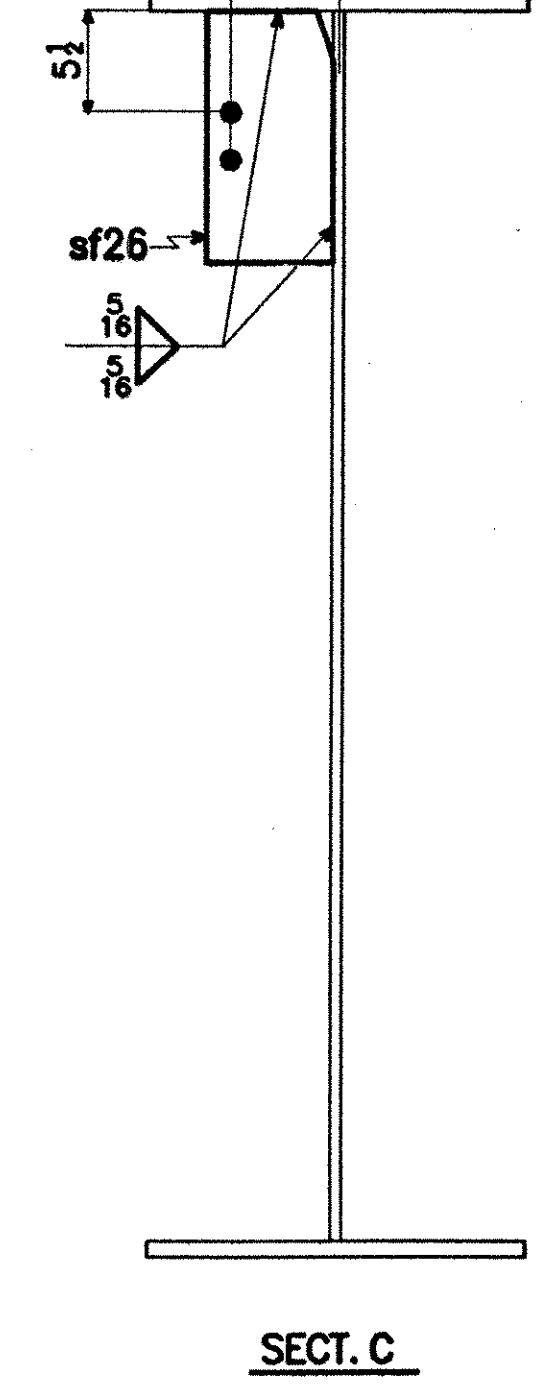
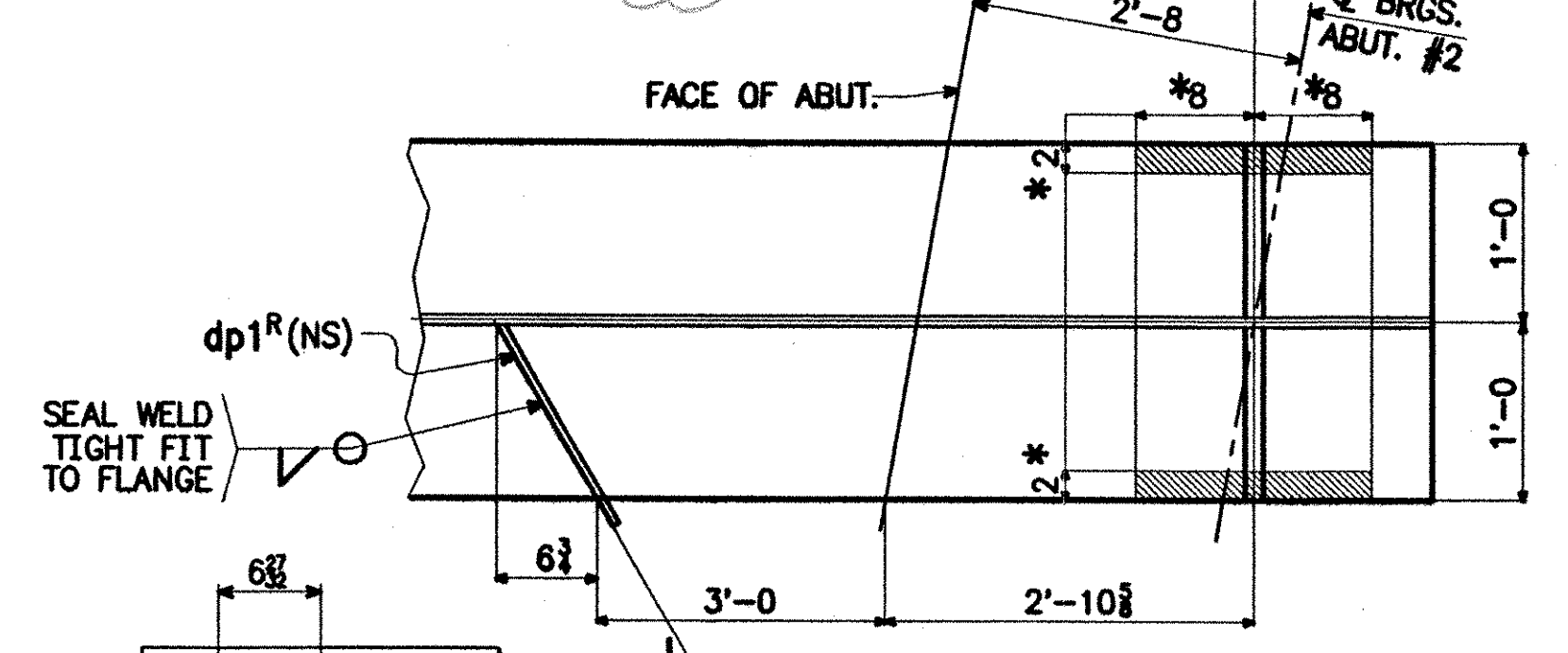
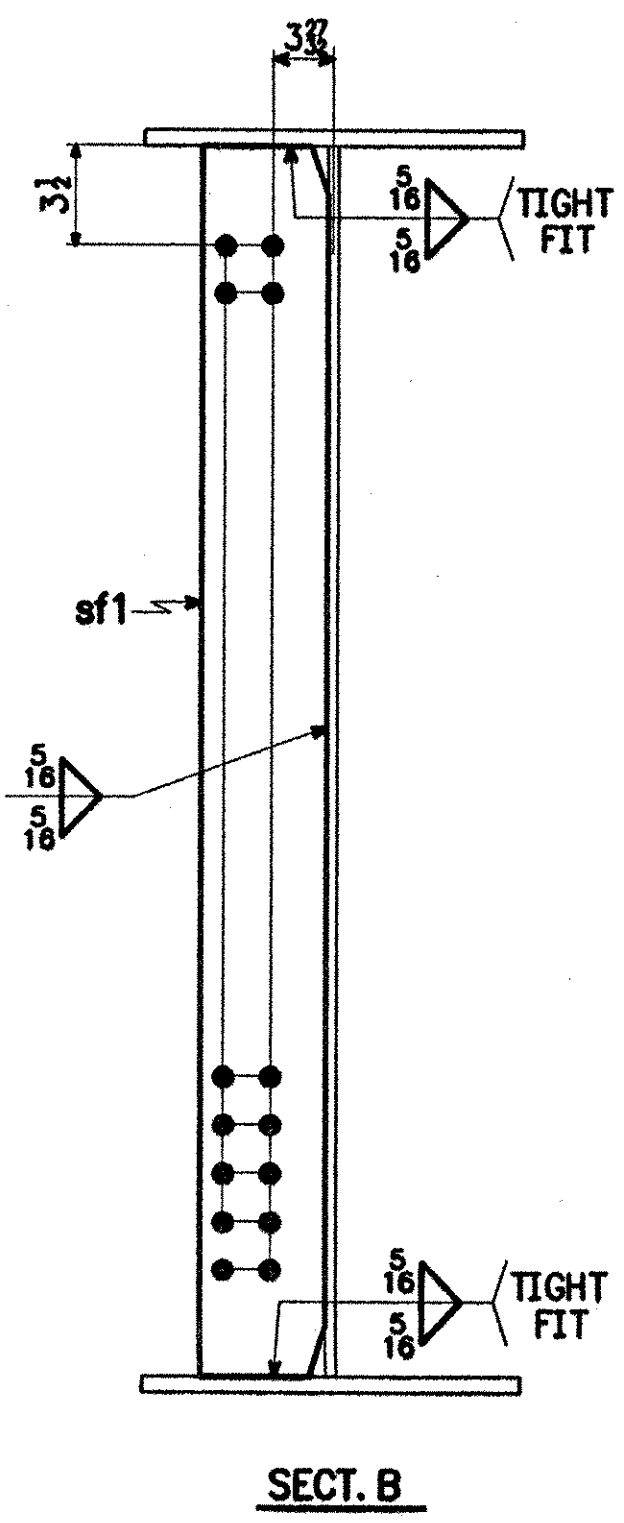


1 ~ GIRDER ~ G5C
GIRDER



- NOTES:**
- FOR GENERAL NOTES, SEE SHT. GN1.
 - FOR GIRDER CAMBER DIAGRAM, SEE DWG. 12-5.
 - FOR GIRDER STANDARD DETAILS, SEE DWG. 12-9.
 - FOR FIELD SPLICE DETAIL, SEE DWG. 12-10.

RECEIVED
CHKD BY WJG OKD BY
DEC 27 2001
RESUBMIT APPROVED BY WJH
DATE 1/4/12

- FLG, WEB & EXT DIM 12-17-01 AV
- PAINT NOTE 11-9-01 Jcm
- SECT H 9-11-01 Jcm

SHIP MARK		BILL OF MATERIAL			WORK ORDER NO.	DRAWING NO.	REV.
					15873	12-25	3
NO.	MARK	SHAPE	LENGTH	ITEM NO.	WT.	REMARKS	
G5C 1 GIRDER							
1	tf1	PL 1" x 24	77'-6 1/8	5-1/4	6332	CVN	
1	tf2	PL 1" x 24	55'-0 1/8	5-1/5	4494	CVN	
1	bf1	PL 1" x 24	77'-6 1/8	5-1/4	6332	CVN	
1	bf2	PL 1" x 24	54'-11 1/8	5-1/5	4490	CVN	
1	wp1	PL 1 1/2 x 78	79'-6 1/8	5-1/2		CVN	
1	wp2	PL 1 1/2 x 78	53'-1 1/8	5-3/5	24184	CVN	
1	bs1 ^L	PL 1 1/2 x 11 1/2	6'-6 1/2	5-1/4	318	M1E	
1	bs2 ^R	PL 1 1/2 x 11 1/2	6'-6 1/2	5-1/4	318	M1E	
5	sf1	PL 1/2 x 8	6'-6	5-3/4	442		
12	sf26	PL 1/2 x 8	1'-4	5-3/4	218		
1	dp1 ^R	PL 1/2 x 3	1'-3 1/2	5-3/12	3		
2	f1	PL 3/8 x 24	3'-4 1/2	5-2/5	345	CVN	
4	f2	PL 3/8 x 10	3'-4 1/2	5-1/2	287	CVN	
2	f3	PL 1 1/2 x 24	1'-9 1/2	5-1/2	368		
2	ws1	PL 3/8 x 72 1/2	1'-7 1/2	5-3/5	501	CVN	
					48632		

STEEL: ASTM A709-36 A709-50 A709-50W Unless Noted

WELDING ELECTRODE: E70 See Welding Proc. None

HOLES: 13/16 15/16 1 1/16 Unless Noted As Noted None

PAINT: None Galv. After Fab. As Noted SEE SHT GN1

SPECIAL PAINT:

SPECIAL CLEANING: Blast Clean SSPC SP10 None

ITEM NO. 506.55 BR. NO. 3 PROJ. NO. BRZ 1444(22)

TITLE: GIRDER ~ G5C

APPROVED: 9-5-01	PRINT DIST.	
5 4-7-01 APPR.	5 7-13-01 APP	5 8-24-01 APP
5 9-12-01 APP	12 9-12-01 FAB	5 11-19-01 APP
11 11-19-01 FAB	5 12-18-01 APP	11 12-18-01 FAB
11 12-18-01 FAB	CHECKED TS 3/01	DRAWN AV 3/01

National Eastern Corporation
Plainville, Connecticut

JOB: T.H. 1 OVER THE WHITE RIVER
ROYALTON, VERMONT

CUSTOMER: BECK & BELLUCCI, INC.

DESIGNER: VERMONT AGENCY OF TRANSPORTATION

WORK ORDER NO.	DRAWING NO.	REV.
15873	12-25	3

FOR APPROVAL
REVISED