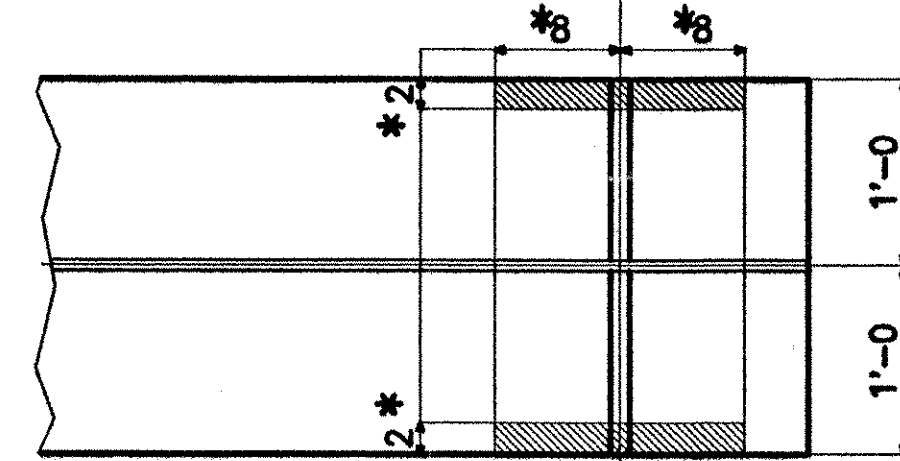
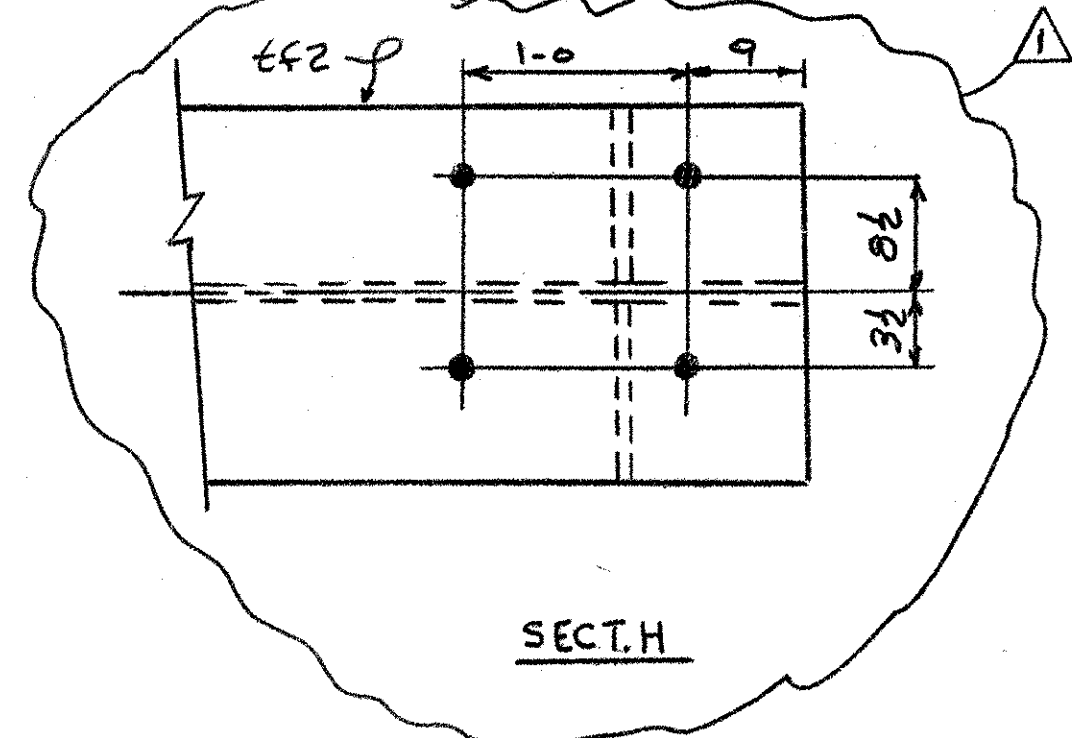
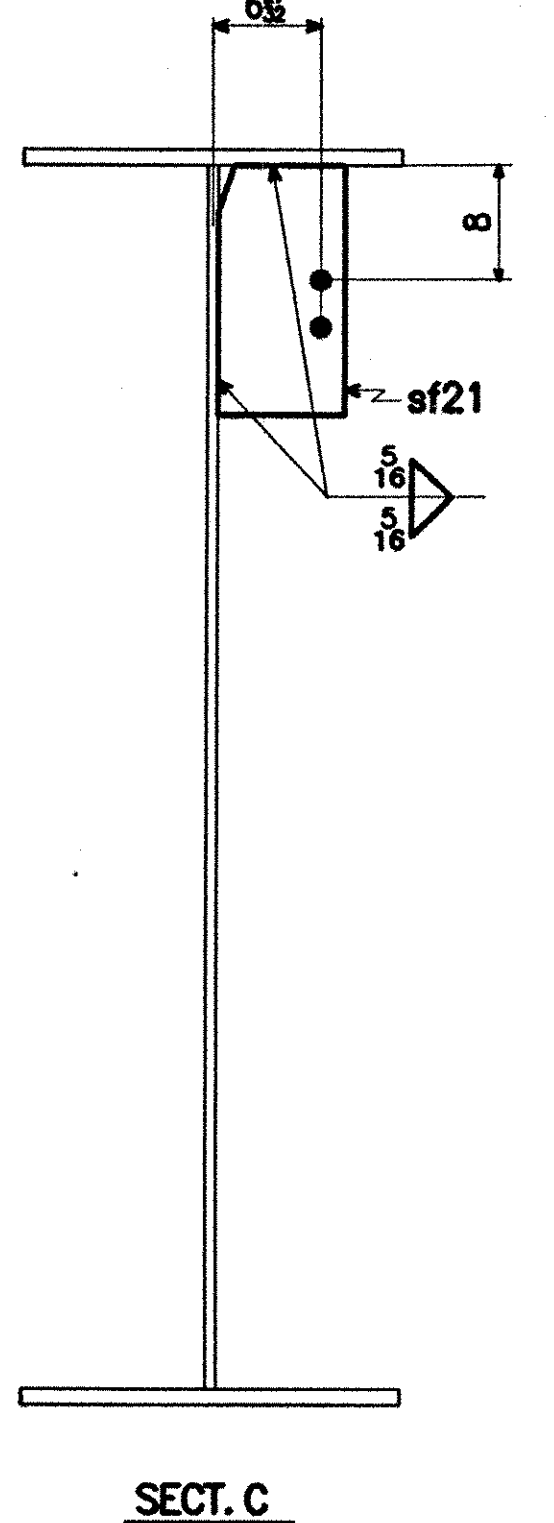
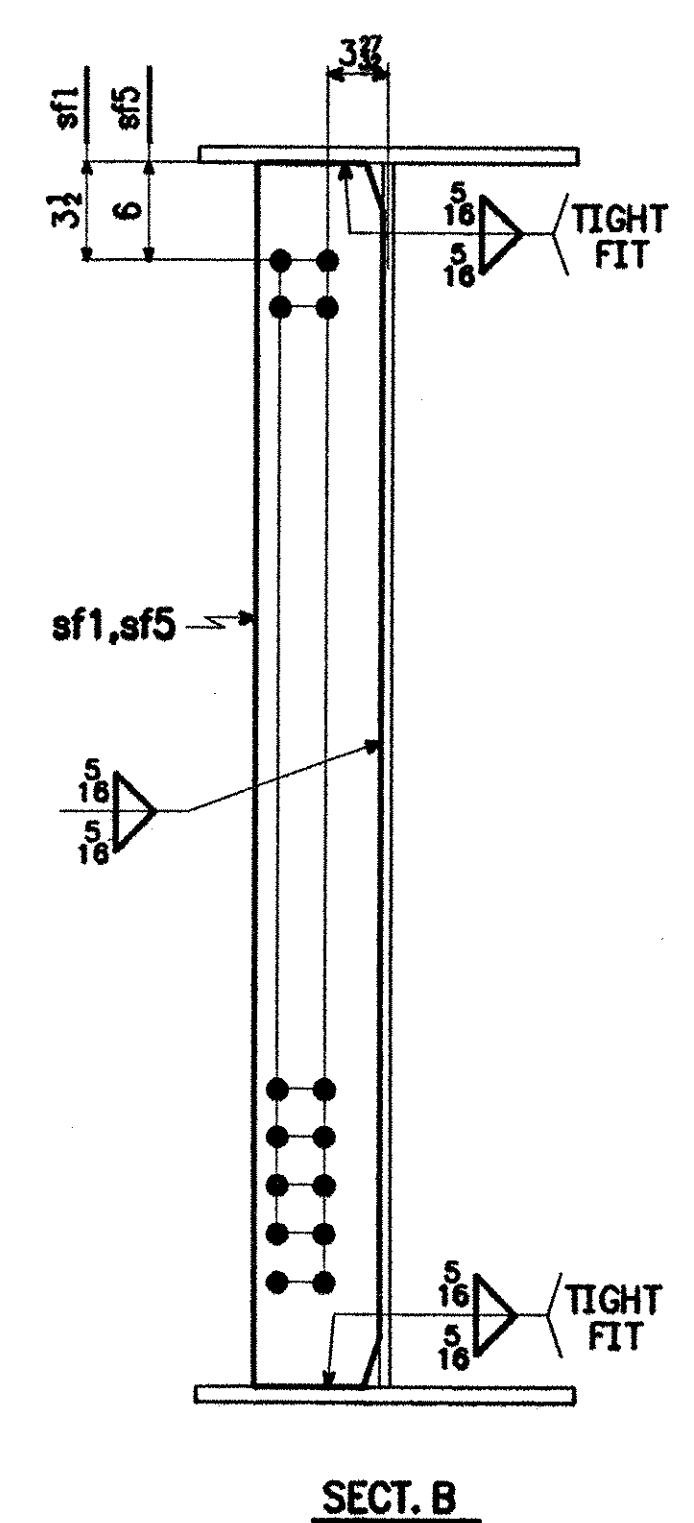
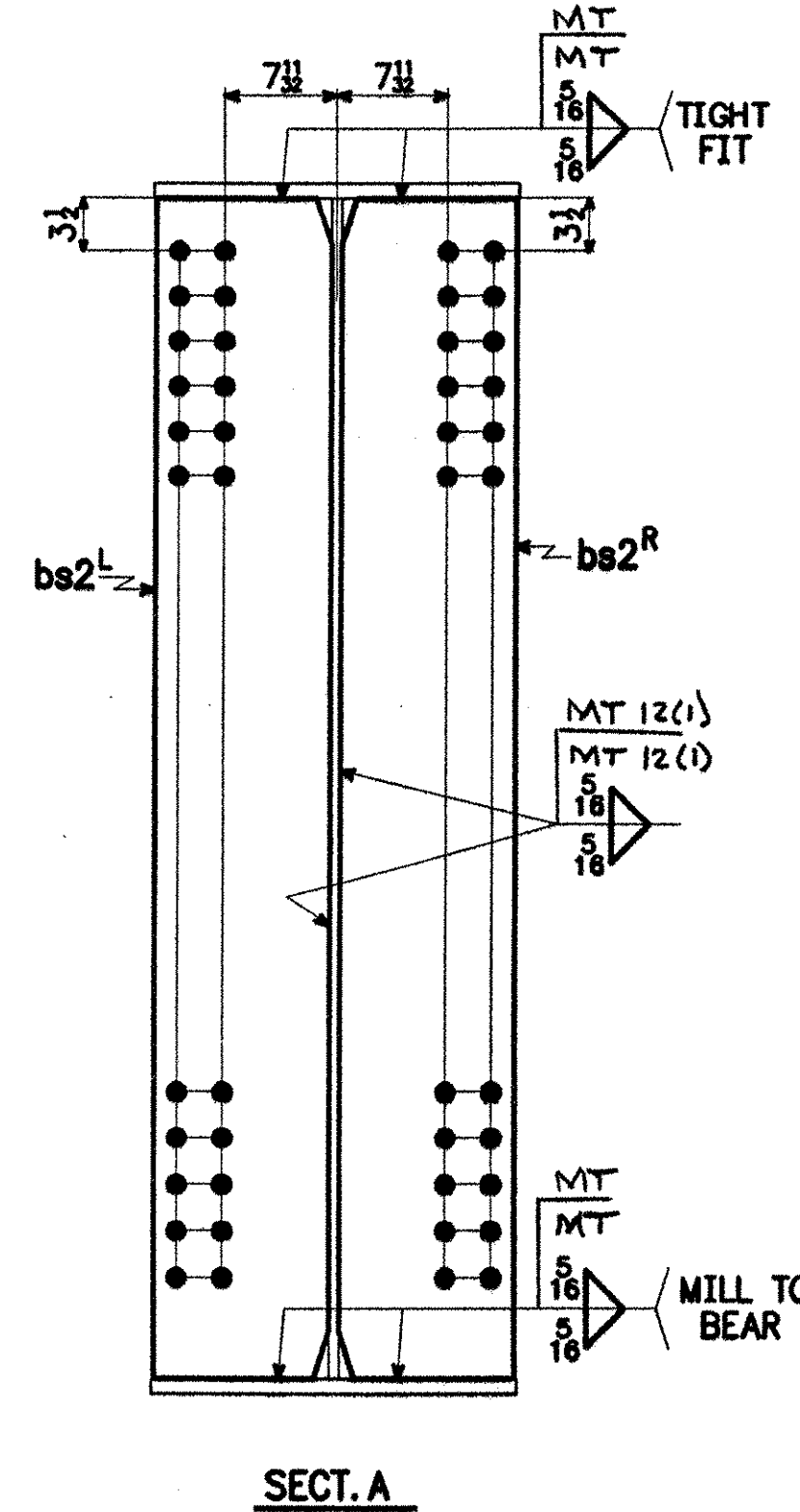
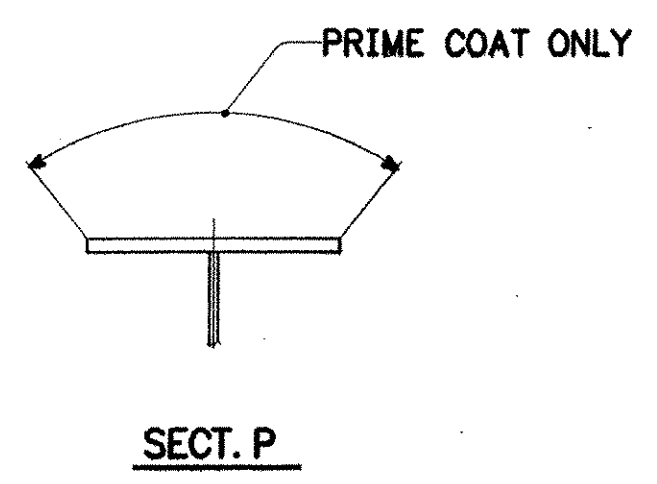


1 ~ GIRDER ~ G2C
GIRDER



SECT. D
*PRIME COAT ONLY BOTT. OF BOTT. FLG. AND EDGES



- NOTES:**
- FOR GENERAL NOTES, SEE SH. GN1.
 - FOR GIRDER CAMBER DIAGRAM, SEE DWG. 12-4.
 - FOR GIRDER STANDARD DETAILS, SEE DWG. 12-9.
 - FOR FIELD SPLICE DETAIL, SEE DWG. 12-10.

RECEIVED
CHKD BY: LJS OK'D BY: _____
DEC 27 2001
RESUBMIT APPROVED BY: [Signature] DATE 1/4/02

- ③ FLG, WEB & EXT DIM 12-17-01 AV
- ② PAINT NOTE 11-19-01 JCM
- ① SECT H 9-11-01 JCM

SHIP MARK	BILL OF MATERIAL				WORK ORDER NO.	DRAWING NO.	REV.
	NO.	MARK	SHAPE	LENGTH	15873	12-22	3
G2C	1	tf1	PL 1" x 24	77'-6 1/8	5-1/4	6332	CVN
	1	tf2	PL 1" x 24	55'-0 3/8	5-1/5	4494	CVN
	1	bf1	PL 1" x 24	77'-6 1/8	5-1/4	6332	CVN
	1	bf2	PL 1" x 24	54'-11 1/8	5-1/5	4490	CVN
	1	wp1	PL 1 1/2 x 78	79'-6 1/8	5-1/2		CVN
	1	wp2	PL 1 1/2 x 78	53'-1 1/8	5-1/2	24184	CVN
	1	bs2 ^L	PL 1 1/2 x 11 1/2	6'-6 1/2	5-1/11	318	M1E
	1	bs2 ^R	PL 1 1/2 x 11 1/2	6'-6 1/2	5-1/11	318	M1E
	5	sf1	PL 1/2 x 8	6'-6	5-3/8	442	
	5	sf5	PL 1/2 x 8	6'-6	5-3/8	442	
	12	sf21	PL 1/2 x 8	1'-4	5-3/8	210	
	2	f1	PL 3/8 x 24	3'-4 1/2	5-2/5	345	CVN
4	f2	PL 3/8 x 10	3'-4 1/2	5-2/5	287	CVN	
2	f3	PL 1 1/2 x 24	1'-9 1/2	5-1/2	368		
2	ws1	PL 3/8 x 72 1/2	1'-7 1/2	5-2/5	501	CVN	
						49071	#

STEEL: ASTM A709-36 A709-50 A709-50W Unless Noted

WELDING ELECTRODE: E70 See Welding Proc. None

HOLES: 13/16 15/16 1 1/16 Unless Noted As Noted None

PAINT: None Galv. After Fab. As Noted

SPECIAL PAINT: _____

SPECIAL CLEANING: Blast Clean SSPC SP10 None

ITEM NO. 506.55 BR. NO. 3 PROJ. NO. BRZ 1444(22)

TITLE: GIRDER ~ G2C

APPROVED: 9-5-01

NO.	DATE	APP.	FAB.
5	4-7-01	APPR.	
ORIG.	9-5-01	FAB.	
5	7-13-01	APP	
5	8-24-01	APP	
5	9-12-01	APP	
12	9-12-01	FAB	
5	11-19-01	APP	
11	11-19-01	FAB	
5	12-18-01	APP	
11	12-18-01	FAB	

CHECKED TS 3/01
DRAWN AV 3/01

National Eastern Corporation
Plainville, Connecticut

JOB: T.H. 1 OVER THE WHITE RIVER
ROYALTON, VERMONT

CUSTOMER: BECK & BELLUCCI, INC.

DESIGNER: VERMONT AGENCY OF TRANSPORTATION

WORK ORDER NO.	DRAWING NO.	REV.
15873	12-22	3

FOR APPROVAL
REVISED