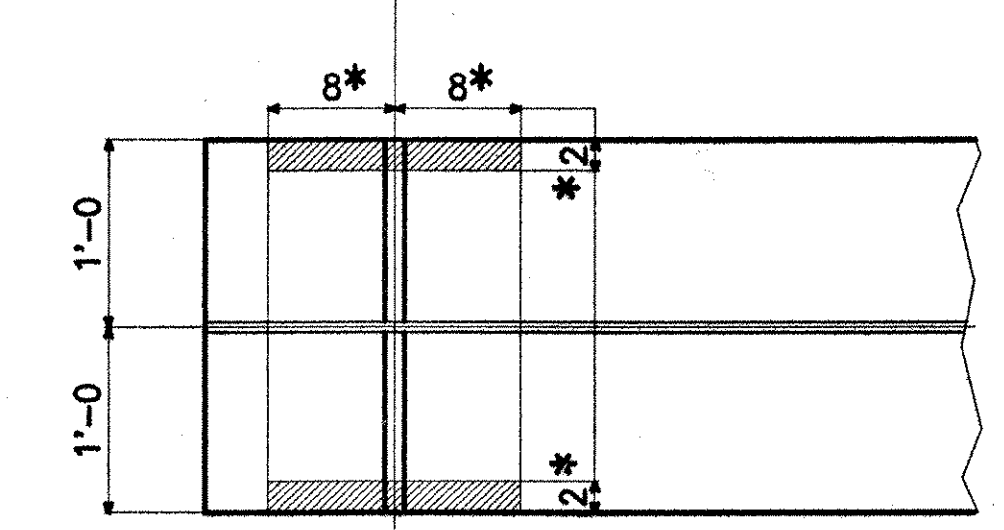
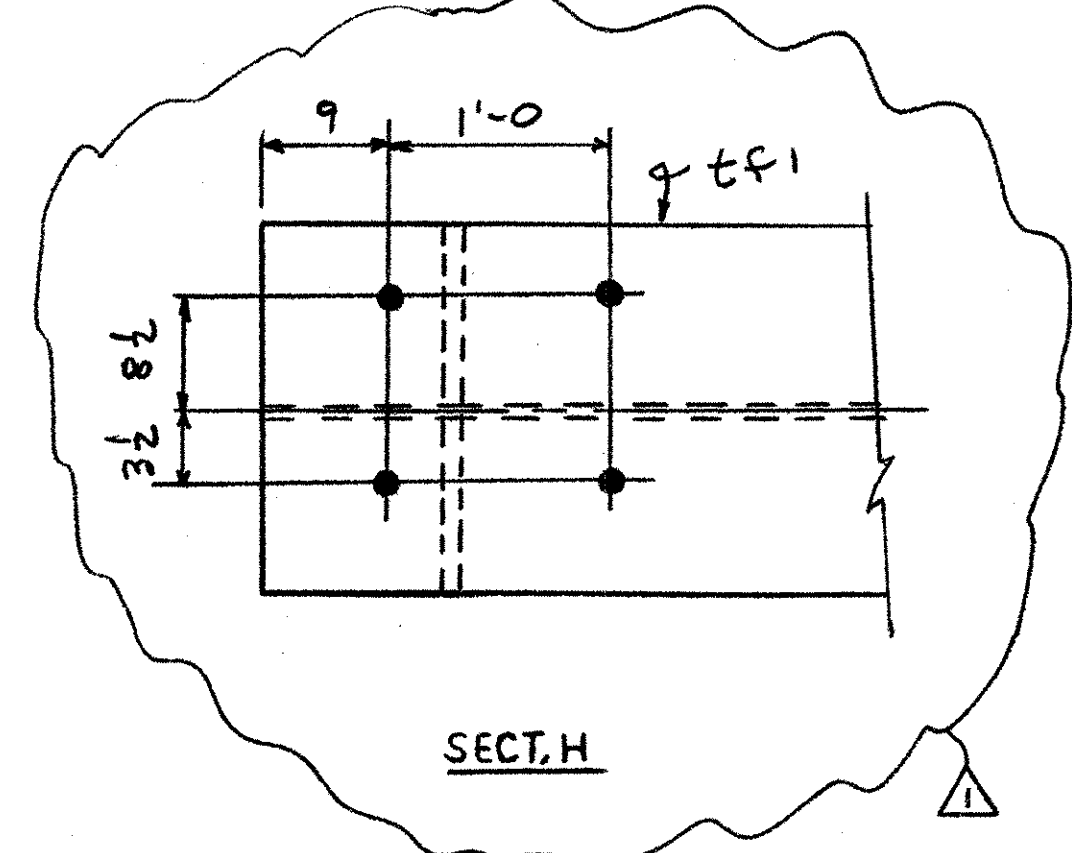


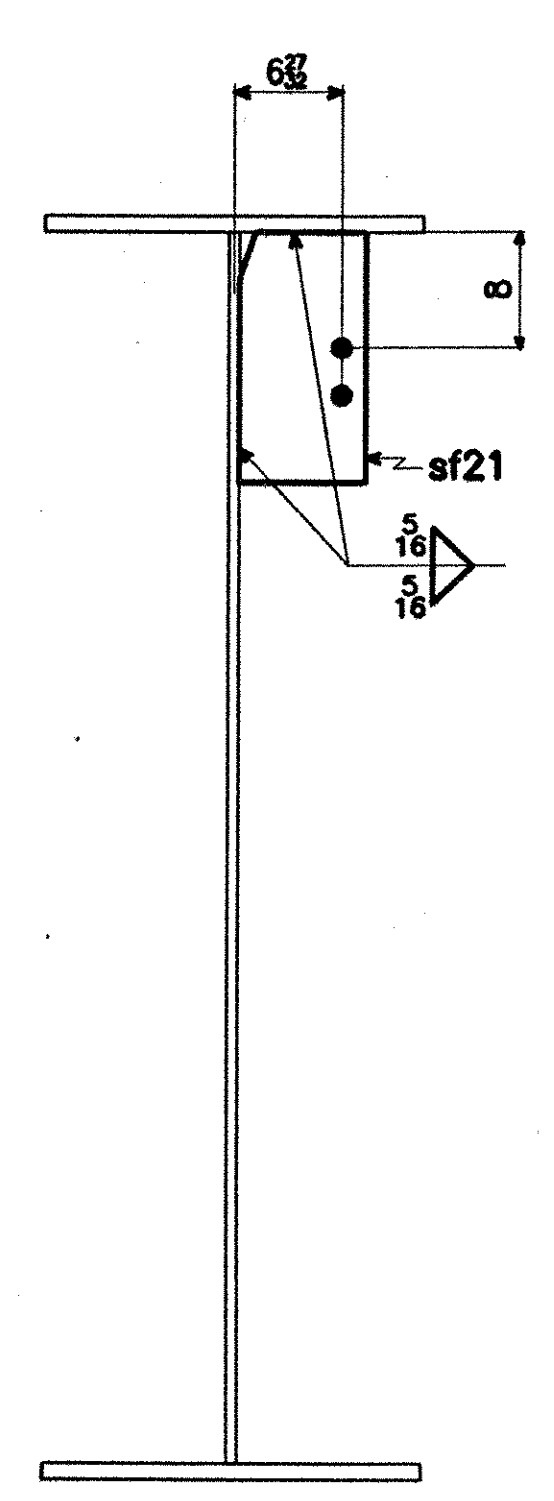
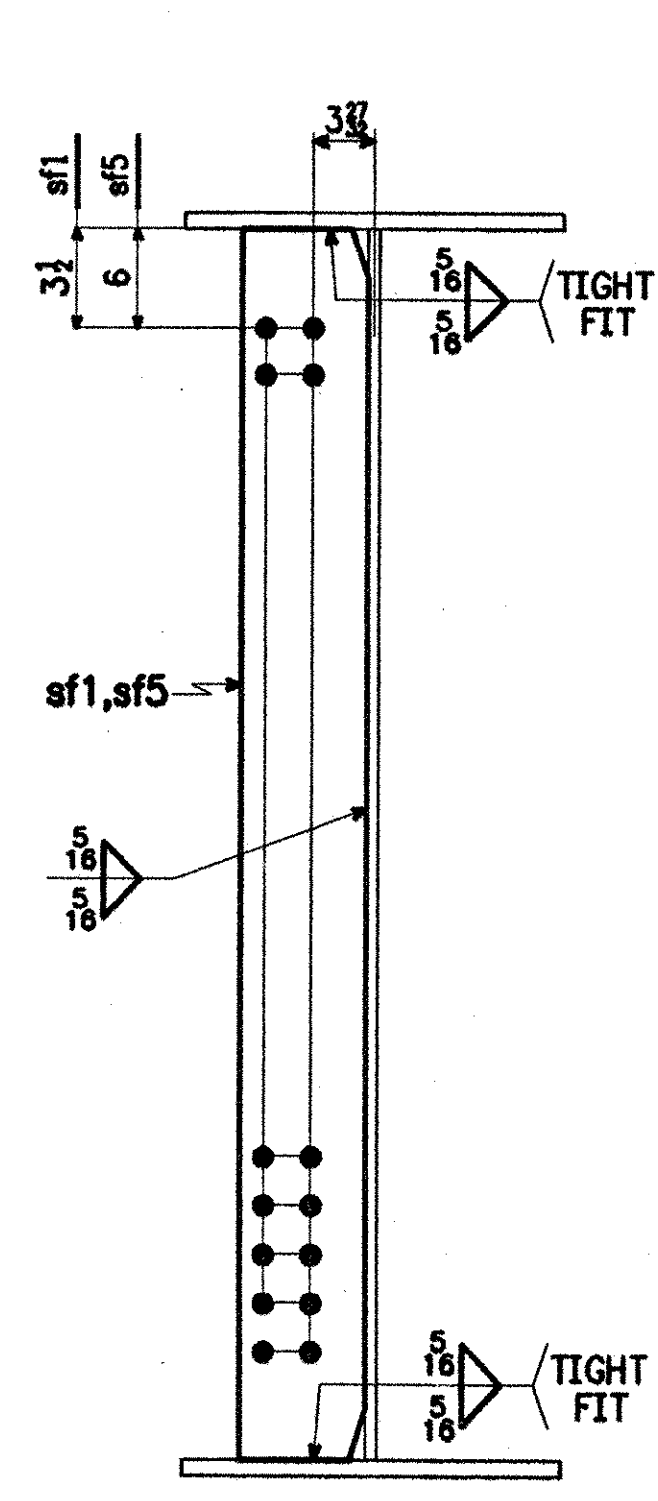
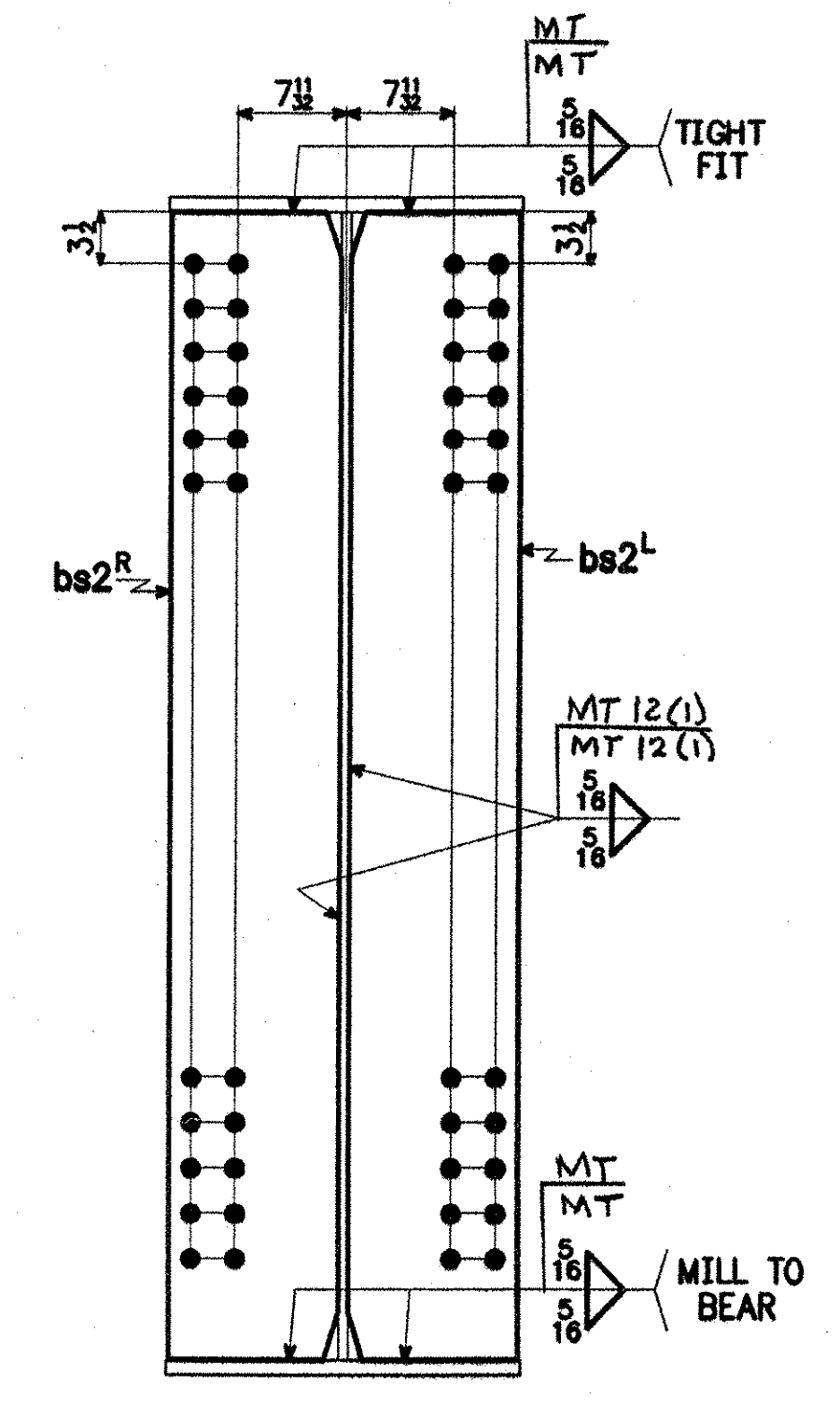
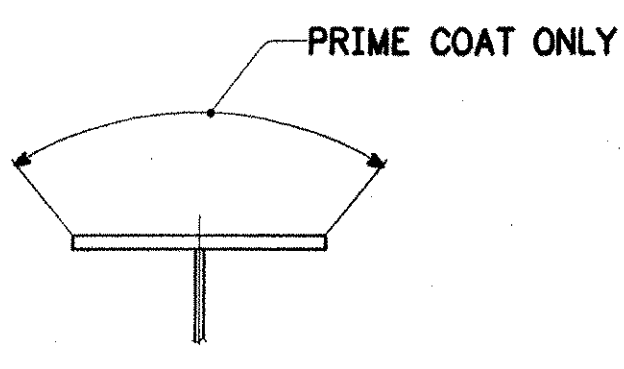
SHIP MARK	BILL OF MATERIAL				WORK ORDER NO.	DRAWING NO.	REV.
	NO.	MARK	SHAPE	LENGTH	15873	12-12	3
G2A	1		GIRDER				
	1	tf1	PL 1" x 24	55'-0 1/8	3	5/16	4494 CVN
	1	tf2	PL 1" x 24	77'-6 1/8	3	5/16	6333 CVN
	1	bf1	PL 1" x 24	54'-11 1/8	3	5/16	4490 CVN
	1	bf2	PL 1" x 24	77'-6 1/8	3	5/16	6332 CVN
	1	wp1	PL 1/2 x 78	53'-1 1/8	3	5/8	CVN
	1	wp2	PL 1/2 x 78	79'-6 1/8	3	5/8	24185 CVN
	1	bs2 ^L	PL 1 1/2 x 11 1/2	6'-6 1/2	3	5/16	318 M1E
	1	bs2 ^R	PL 1 1/2 x 11 1/2	6'-6 1/2	3	5/16	318 M1E
	5	sf1	PL 1/2 x 8	6'-6	3	5/8	442
	5	sf5	PL 1/2 x 8	6'-6	3	5/8	442
	12	sf21	PL 1/2 x 8	1'-4	3	5/8	218
	2	f1	PL 3/8 x 24	3'-4 1/2	3	5/8	345 CVN
	4	f2	PL 3/8 x 10	3'-4 1/2	3	5/8	287 CVN
	2	f3	PL 1 1/2 x 24	1'-9 1/8	3	5/8	368
	2	ws1	PL 3/8 x 72 1/2	1'-7 1/2	3	5/8	501 CVN
							49073 #



1 ~ GIRDER ~ G2A
GIRDER



SECT. D
*PRIME COAT ONLY BOT. OF BOT. FLG. AND EDGES



- NOTES:**
- FOR GENERAL NOTES, SEE SHT. GN1.
 - FOR GIRDER CAMBER DIAGRAM, SEE DWG. 12-1.
 - FOR GIRDER STANDARD DETAILS, SEE DWG. 12-9.
 - FOR FIELD SPLICE DETAIL, SEE DWG. 12-10.

RECEIVED
OK'D BY WJS OK'D BY
DEC 27 2001
RESUBMIT APPROVED A. N. H. DATE 1/4/02
BY CPW

- FLG, WEB & EXT DIM 12-17-01 AV
- PAINT NOTE 11-19-01 Jcm
- SECT H 9-11-01 Jcm

STEEL: ASTM A709-36 A709-50 A709-50W Unless Noted

WELDING ELECTRODE: E70 See Welding Proc. None

HOLES: 13/16 15/16 1 1/16 Unless Noted As Noted None

PAINT: None Galv. After Fab. As Noted SEE SHT GN 1

SPECIAL PAINT:
SPECIAL CLEANING: Blast Clean SSPC SP10 None

ITEM NO. 506.55 BR. NO. 3 PROJ. NO. BRZ 1444(22)

TITLE: GIRDER ~ G2A

APPROVED: PRINT DIST.

5	4-7-01	APPR.
ORIG.	9-5-01	FAB.
5	7-13-01	APP
5	8-24-01	APP
5	9-12-01	APP
12	9-12-01	FAB
5	11-19-01	APP
11	11-19-01	FAB
5	12-18-01	BPP
11	12-18-01	FAB

CHECKED TS 3/01
DRAWN AV 3/01

National Eastern Corporation
Plainville, Connecticut

JOB: T.H. 1 OVER THE WHITE RIVER
ROYALTON, VERMONT

CUSTOMER: BECK & BELLUCCI, INC.

DESIGNER: VERMONT AGENCY OF TRANSPORTATION

WORK ORDER NO. 15873 DRAWING NO. 12-12 REV. 3

FOR APPROVAL
REVISED