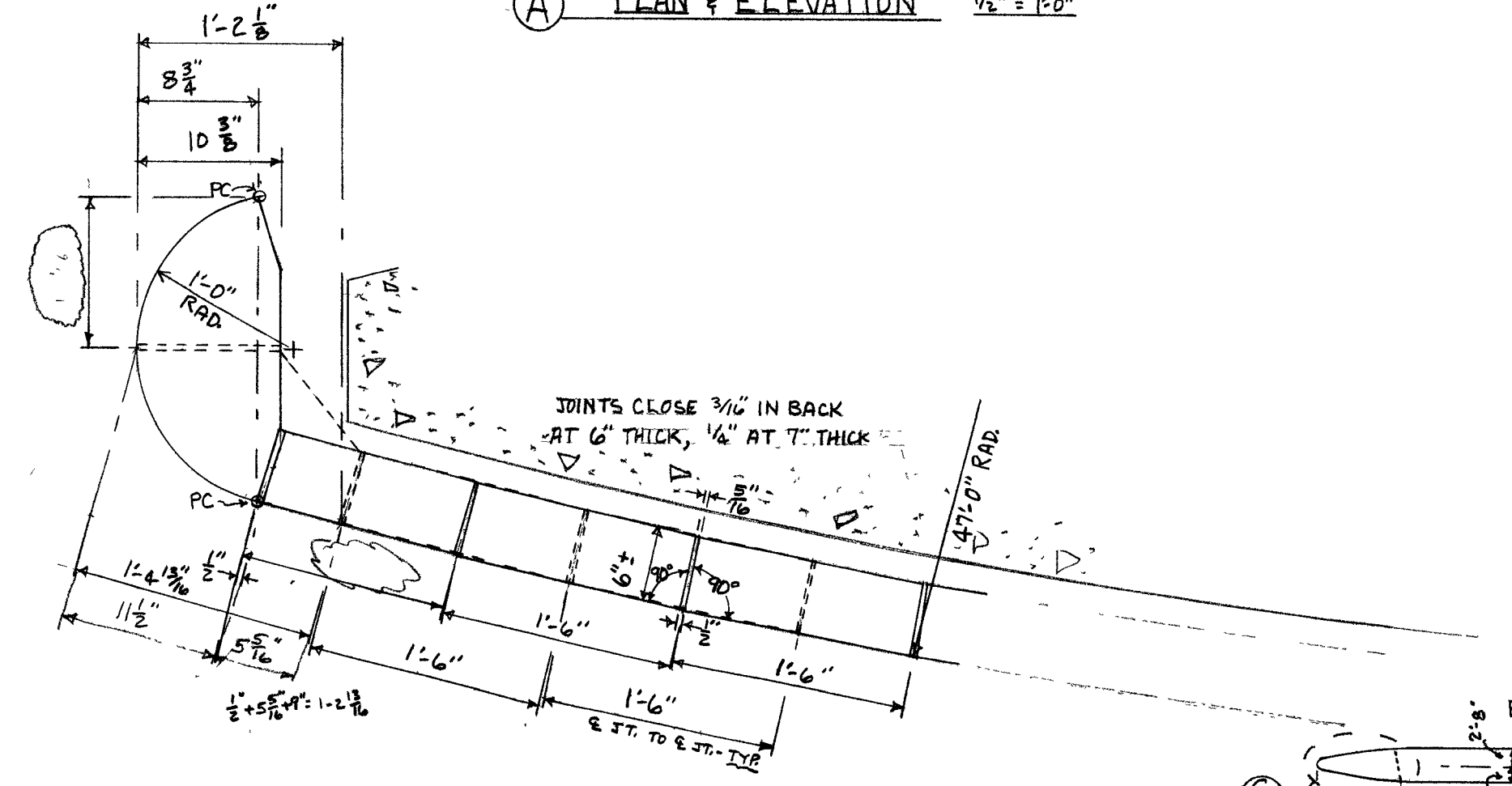
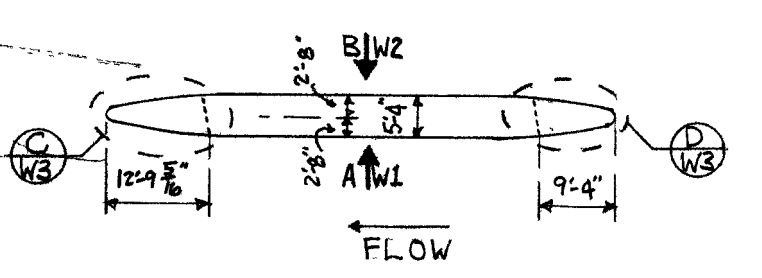


(A) PLAN & ELEVATION $\frac{1}{8}'' = 1'-0''$

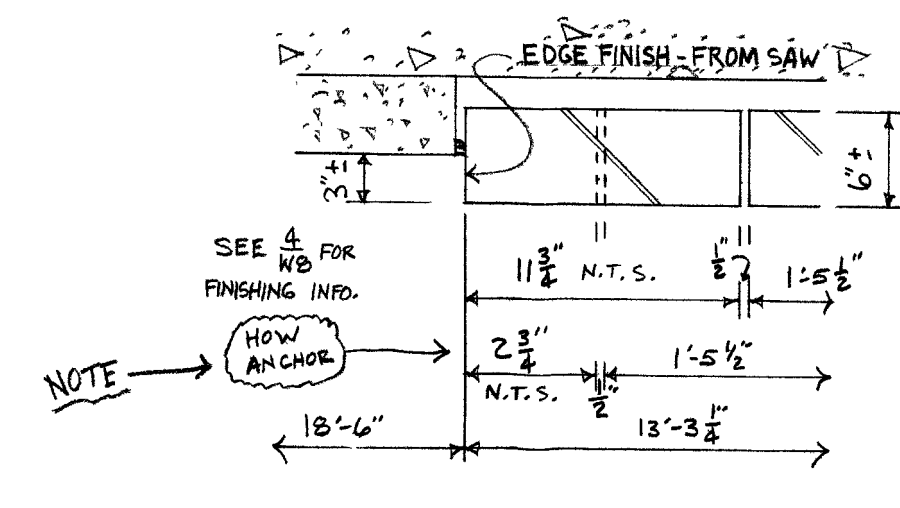


(1) DETAIL

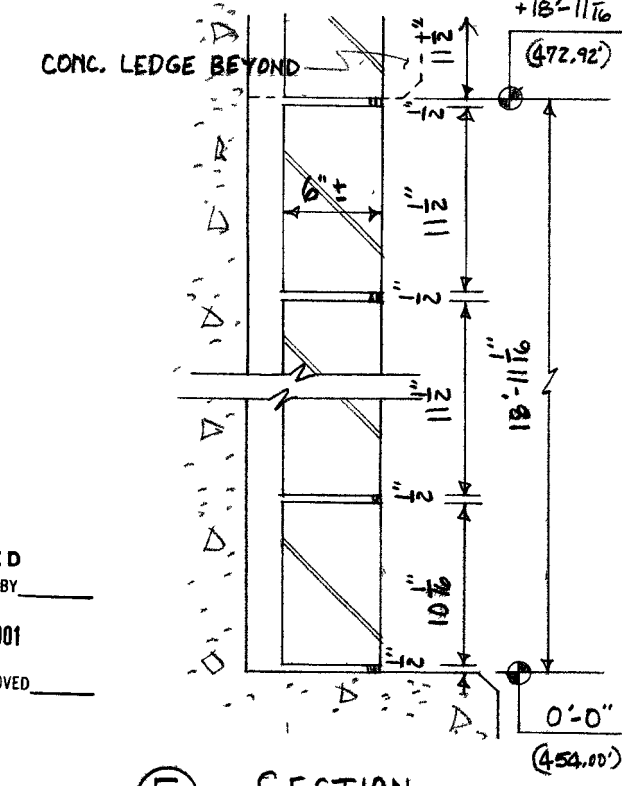


KEY PLAN

TYPICAL CONDITIONS - SEE (1) (2) (3)



(4) DETAIL



(5) SECTION

NOTE
This shop drawing represents our interpretation of the architect's plans and specifications, and our contract requirements for this project.
Prior to fabrication of any stone for this job, all dimensions, methods of construction, and existing conditions must be checked and accepted or approved by our customer.
No stone will be scheduled for fabrication until we have been notified in writing by our customer that our drawings have been APPROVED FOR FABRICATION.
Approval does not constitute an approval of the contractor's design.
Any stone fabricated in accordance with approved shop drawings that does not meet conditions will be removed and shipped to the job site at our customer's expense, and only after receipt of purchase order to cover the extra expense.
We assume no responsibility for the cutting of our stone to accommodate other trades unless approved in writing by the architect and shown on our shop drawings at the time they are approved for fabrication by our customer.
We assume no responsibility as to measurements or details affecting any work not on our part, and we will not be responsible for any errors occurring through the use of this drawing by other parties.

DATE	ISSUED FOR	DATE	REVISIONS	NO.
1-25-01	APPROVAL			
8-28-01	APPROVAL			

GRANITE IMPORTERS INC.
P.O. Box 712
South Vine Street
Barre, Vermont 05841
(802) 478-8818 FAX 802-478-7348

TITLE	PIER ELEVATION (NORTH)	JOB NO. 21071	SHEET MARK
JOB	BRIDGE BRZ 1444 (23)		
LOCATION	ROYALTON, VERMONT		
CONTRACTOR	ESTY CONSTRUCTION		
ARCHITECT	VERMONT TRANSPORTATION AGENCY		
STONE TYPE AND FINISH	WOODBURY GRANITE-SPLIT FACE	DATE	APR. 2001
		SCALE	$\frac{1}{8}'' = 1'-0''$

RECEIVED
CND BY: [Signature] CND BY:
SEP 07 2001
RESUBMIT APPROVED BY: [Signature] DATE: