

TH 1 CURVE 1	
Radius:	301.56
Delta:	19° 22' 38.23" Left
Degree of Curvature (Arc):	19° 00' 00.00"
Length:	101.99
Tangent:	51.48
Chord:	101.50
Middle Ordinate:	4.30
External:	4.36
Banking:	Normal

APPROXIMATE LOCATION OF REVISED CENTERLINE FOR ADJACENT BRS 0147 (5) S (SURVEYS AND LINES HAVE NOT BEEN EQUATED)

NOTE: FOR DRIVE AND GUARD RAIL RADII SEE SHEETS 67-69.

LINES SHOWN ON THIS PLAN AS EXISTING PROPERTY LINES P/L ARE BELIEVED TO BE ACCURATE BUT SHOULD NOT BE RELIED UPON FOR PURPOSES UNRELATED TO THE TOWN OF ROYALTON'S ACQUISITION OF LAND AND RIGHTS FOR THIS PROJECT.

6" UNDERDRAIN (NOT SHOWN FOR CLARITY) STA 102+25-STA 104+25 RT & LT (OUTLET AROUND WINGWALLS)

UNDERDRAIN FLUSHING BASIN STA 102+25 RT & LT

BEGIN APPROACH STA 101+50.00

END APPROACH BEGIN PROJECT STA 102+25.00

BEGIN R.O.W. PROJECT BRZ 1444(22) STA. 102+08 25' RT.

SEE SHEET 16 FOR DRAINAGE NOTES
SEE SHEETS 67-69 FOR CURB AND RAILING LAYOUT

RELOCATE DRY HYDRANT FROM STA 104+22 - 50' RT TO STA 103+10 - 80' RT

REMOVING AND RESETTING FENCE STA 103+75 LT - 104+14 LT STA 104+80 LT +/-

REMOVAL OF EXISTING FENCE STA 104+65 LT - 104+75 LT

TEMP. AERIAL RELOCATION OWNED BY BELL ATLANTIC - NE TELEPHONE

REMOVE AND DISPOSAL OF GUARD RAIL STA 108+16 RT - STA 108+87 LT STA 107+80 RT - STA 108+60 RT

CONSTRUCT DRIVES

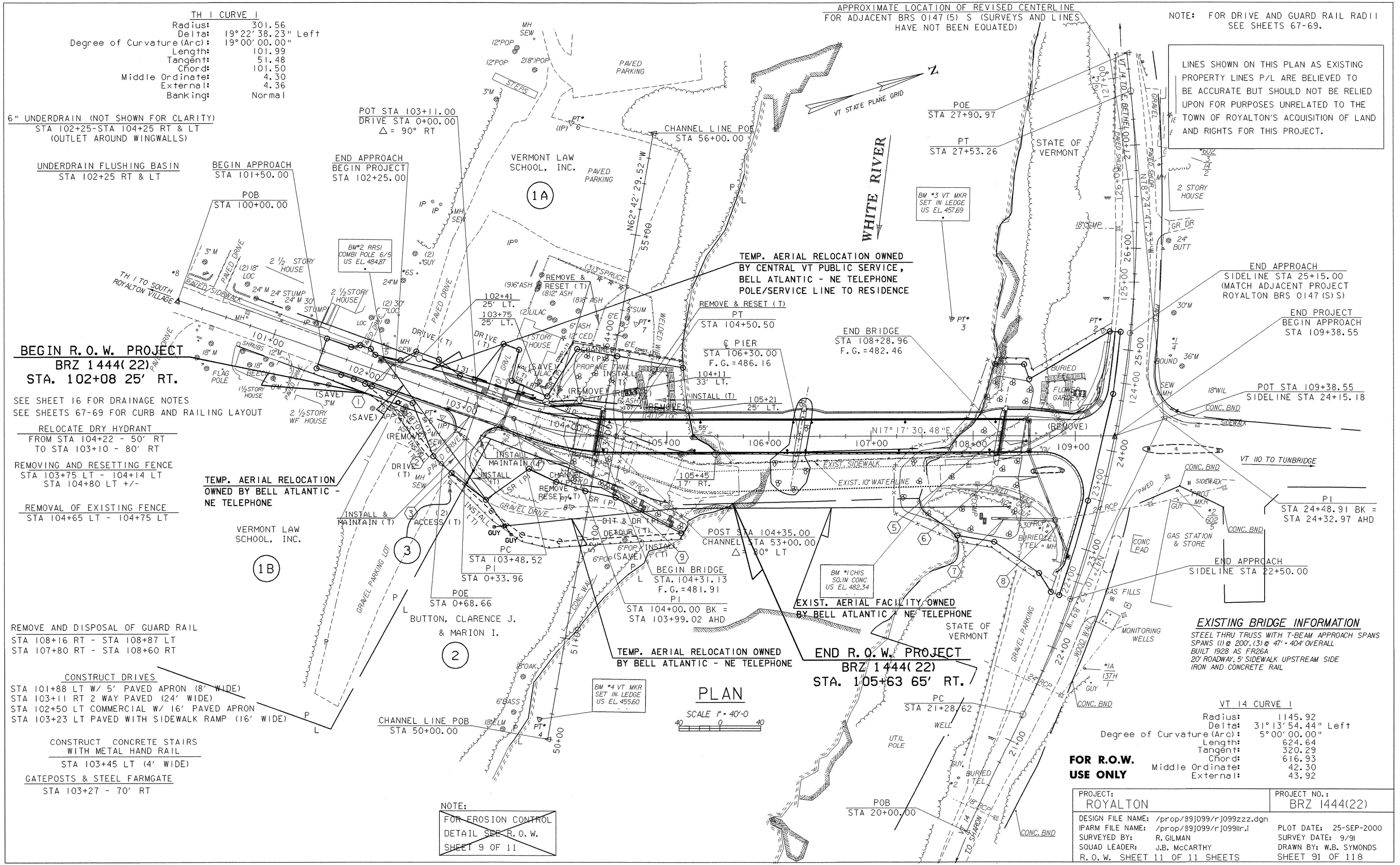
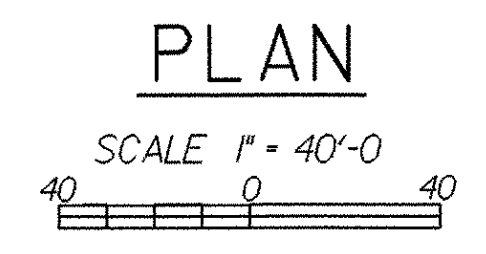
STA 101+88 LT W/ 5' PAVED APRON (8' WIDE)
STA 103+11 RT 2 WAY PAVED (24' WIDE)
STA 102+50 LT COMMERCIAL W/ 16' PAVED APRON
STA 103+23 LT PAVED WITH SIDEWALK RAMP (16' WIDE)

CONSTRUCT CONCRETE STAIRS WITH METAL HAND RAIL

STA 103+45 LT (4' WIDE)

GATEPOSTS & STEEL FARMGATE STA 103+27 - 70' RT

NOTE: FOR EROSION CONTROL DETAIL SEE R.O.W. SHEET 9 OF 11



EXISTING BRIDGE INFORMATION
STEEL THRU TRUSS WITH T-BEAM APPROACH SPANS
SPANS (1) @ 200', (3) @ 47' - 40' OVERALL
BUILT 1928 AS FR26A
20' ROADWAY, 5' SIDEWALK UPSTREAM SIDE
IRON AND CONCRETE RAIL

VT 14 CURVE 1	
Radius:	1145.92
Delta:	31° 13' 54.44" Left
Degree of Curvature (Arc):	5° 00' 00.00"
Length:	624.64
Tangent:	320.29
Chord:	616.93
Middle Ordinate:	42.30
External:	43.92

FOR R.O.W. USE ONLY

PROJECT:	ROYALTON	PROJECT NO.:	BRZ 1444(22)
DESIGN FILE NAME:	/prop/89j099/rj099zzz.dgn	PLOT DATE:	25-SEP-2000
IPARM FILE NAME:	/prop/89j099/rj099llr.l	SURVEY DATE:	9/91
SURVEYED BY:	R. GILMAN	DRAWN BY:	W.B. SYMONDS
SQUAD LEADER:	J.B. MCCARTHY	SHEET	91 OF 118
R.O.W. SHEET	11 OF 11 SHEETS		