

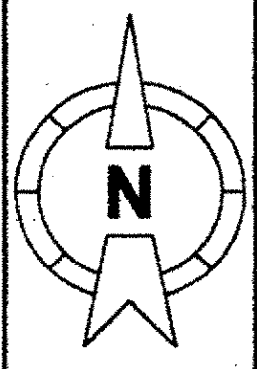
GENERAL NOTES:

WORK ORDER

1. THE CONTRACTOR IS REQUIRED TO COMPLY WITH ALL NATIONALLY ACCEPTED SAFETY PRACTICES.
2. THE CONTRACTOR IS REQUIRED TO COMPLY WITH ALL LOCAL, STATE, FEDERAL AND BELL ATLANTIC REGULATIONS.
3. BELL ATLANTIC WILL OBTAIN THE NECESSARY STATE AND LOCAL PERMITS REQUIRED TO COMPLETE THE TELEPHONE WORK ON THE BRIDGE AND BRIDGE APPROACHES.
4. THE DESIGN CABLE LOAD IS 8.0 POUNDS PER FOOT FOR EACH OF SIX DUCTS. THE TOTAL CONDUIT AND HANGER LOAD AT EACH SUPPORTS 652 LB.. BASED ON A NOMINAL SPACING OF 12 FEET.
5. THE UTILITY SUPPORTS ARE TO BE FABRICATED FROM 3" x 3" x 1/4" STEEL AND HOT DIPPED GALVANIZED
6. THE CONTRACTOR MUST LOCATE AND PROTECT ALL EXISTING BURIED CABLES DURING EXCAVATION ON BRIDGE APPROACHES.
7. SPECIFIED FIBERGLASS CONDUIT AMERICAN U-TEL [PN 12370]
 - A. 4" DIAMETER FIBERGLASS DUCTS WITH THREADED JOINTS WITH 3000 LB.. PULLOUT STRENGTH.
 - B. ULTIMATE TENSILE STRENGTH 10,000 PSI PER ASTM D-2105.
 - C. 4" IPS 4.5" OUTSIDE DIAMETER x 4.36" INSIDE DIAMETER x 30 FT LENGTHS.
 - D. CAPABLE OF HANGER SUPPORT SPANS OF 17.2" FOR 8 LBS.PER FT. CABLE BASED. ON LESS THAN 5/8" MIDSPAN DEFLECTION.
8. ALL DRAWINGS ARE BASED ON AVAILABLE CONTRACT DRAWINGS WHICH MAY VARY FROM ACTUAL AS-BUILT CONDITIONS. THE CONTRACTOR SHALL VERIFY ALL PERTINENT DIMENSIONS BEFORE FABRICATION OR INSTALLATION.
9. CONDUIT DRAINAGE. THE CONTRACTOR SHALL INSURE THAT ALL CONDUITS ARE SLOPED TO PROVIDE DRAINAGE FROM THE BRIDGE GRADE BEAM TO THE FIRST MANHOLE ON EITHER SIDE OF THE BRIDGE.
10. GASKETED EXPANSION JOINTS MUST BE PRESET FOR THE AMBIENT TEMPERATURE AT THE TIME OF INSTALLATION. (SEE RIGHT)
11. ALL CONDUIT ON BRIDGE APPROACHES IS TO BE CONCRETE ENCASED WITH A MINIMUM OF 2" OF CONCRETE ON TOP, BOTTOM, AND SIDES. DUCTS WILL BE SEPARATED BY 1" OF CONCRETE

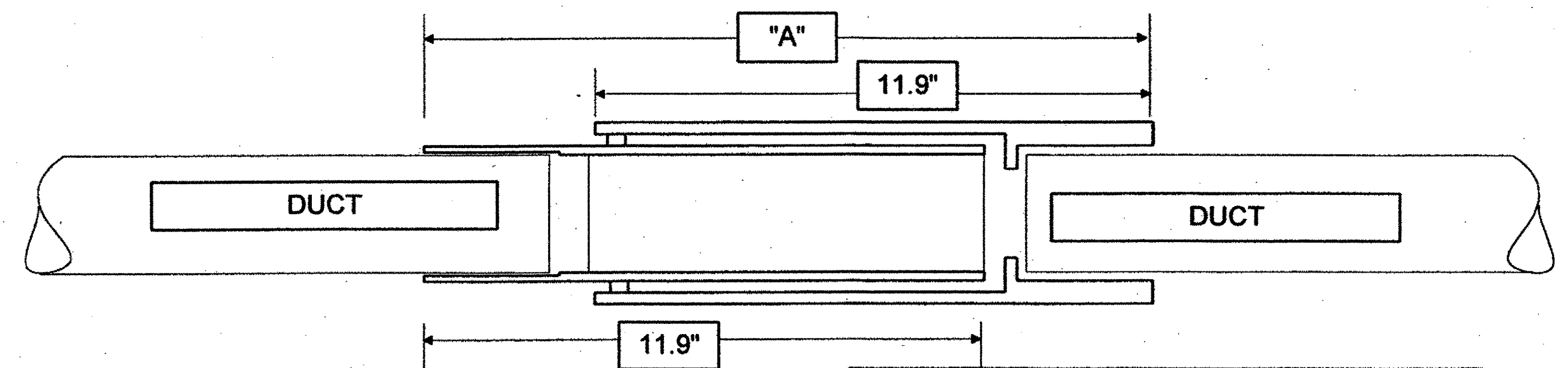
Notice: Not for Use/disclosure outside of BELL ATLANTIC without written agreement

BELL ATLANTIC

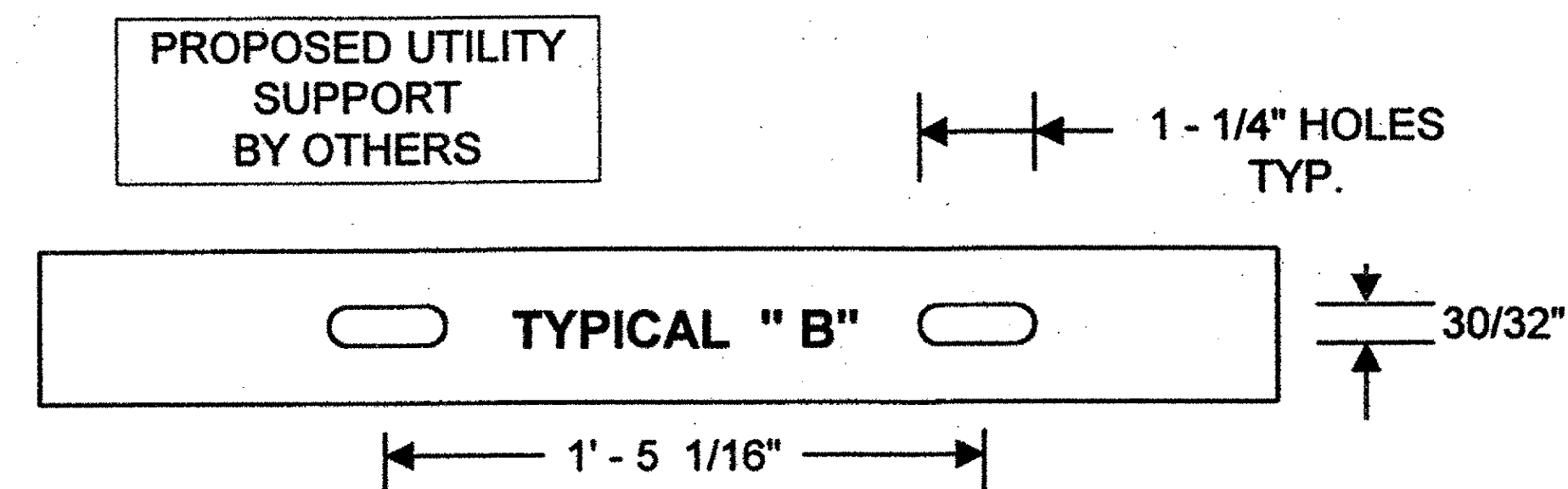
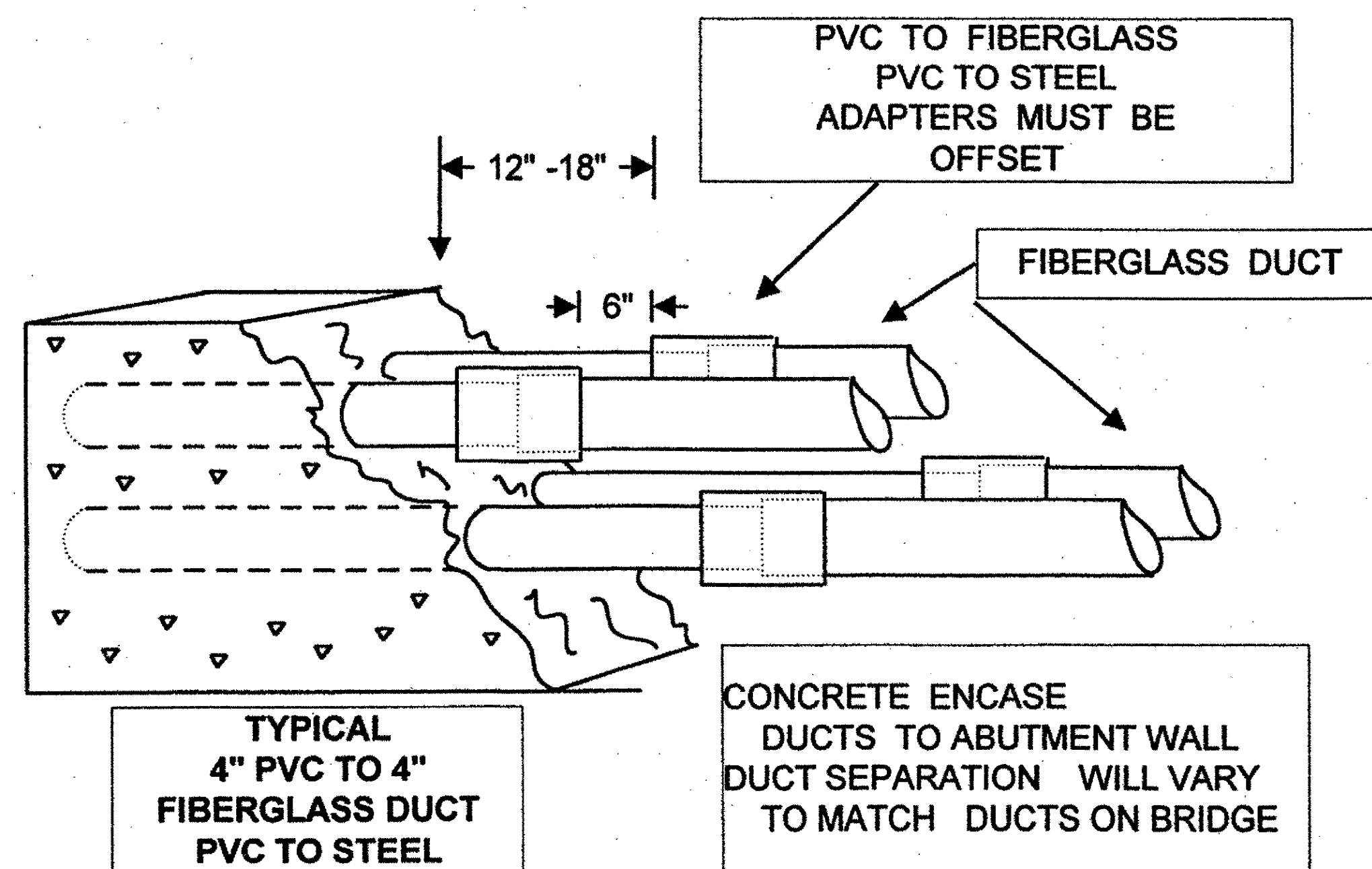
	SAFETY NOTES: HWY CONSTRUCTION TRAFFIC		MOD/REV NO.	DATE	EWO NO.
	SIGNATURE				PRINT 8 OF
	DATE				PREPARED BY: J. BRIAN GRESL
	INPUT				C.O. /EXCHANGE NAME: SOUTH ROYALTON
PRE CT	YES <input type="checkbox"/>	NO <input checked="" type="checkbox"/>	TYPE	RECORD REF:	SOUTH ROYALTON
PRIMARY VOLTAGE TO GROUND	7.2 KV MGN SYSTEM		AERIAL	INPUT	C.O. /EXCHANGE CODE: 4875
CABLE PRESS.	UNDER PRESS. YES <input type="checkbox"/>	NO <input checked="" type="checkbox"/>	UNDERGROUND		MUNICIPALITY: SOUTH ROYALTON
TRANSMISSION	26GA LIMIT YES <input type="checkbox"/>	NO <input checked="" type="checkbox"/>	BLOCK (NYT)		
			CONDUIT		
			AMT. BRIDGE TAP	INPUT	KF
			MANHOLE LOCATION MH#		NA

TYPICAL EXPANSION JOINT

PROJECT - 131154



PRESET LENGTH "A" BASED ON AMBIENT TEMPERATURE"	
TEMPERATURE (degree)	LENGTH
- 20 F.	19.4"
0 F.	18.8"
20 F.	18.3"
40 F.	17.7"
60 F.	17.1"
80 F.	16.5"
100 F.	15.9"



6/23/00

RECEIVED
JUN 26 2000
UTILITIES

Sheet 89 of 118