

REV.	DATE	DESCRIPTION
BLB	6-8-00	CORRECTED SCALE
EET	5-28-00	VT AOT COMMENTS
BLB	5-27-00	DELETE SEWER

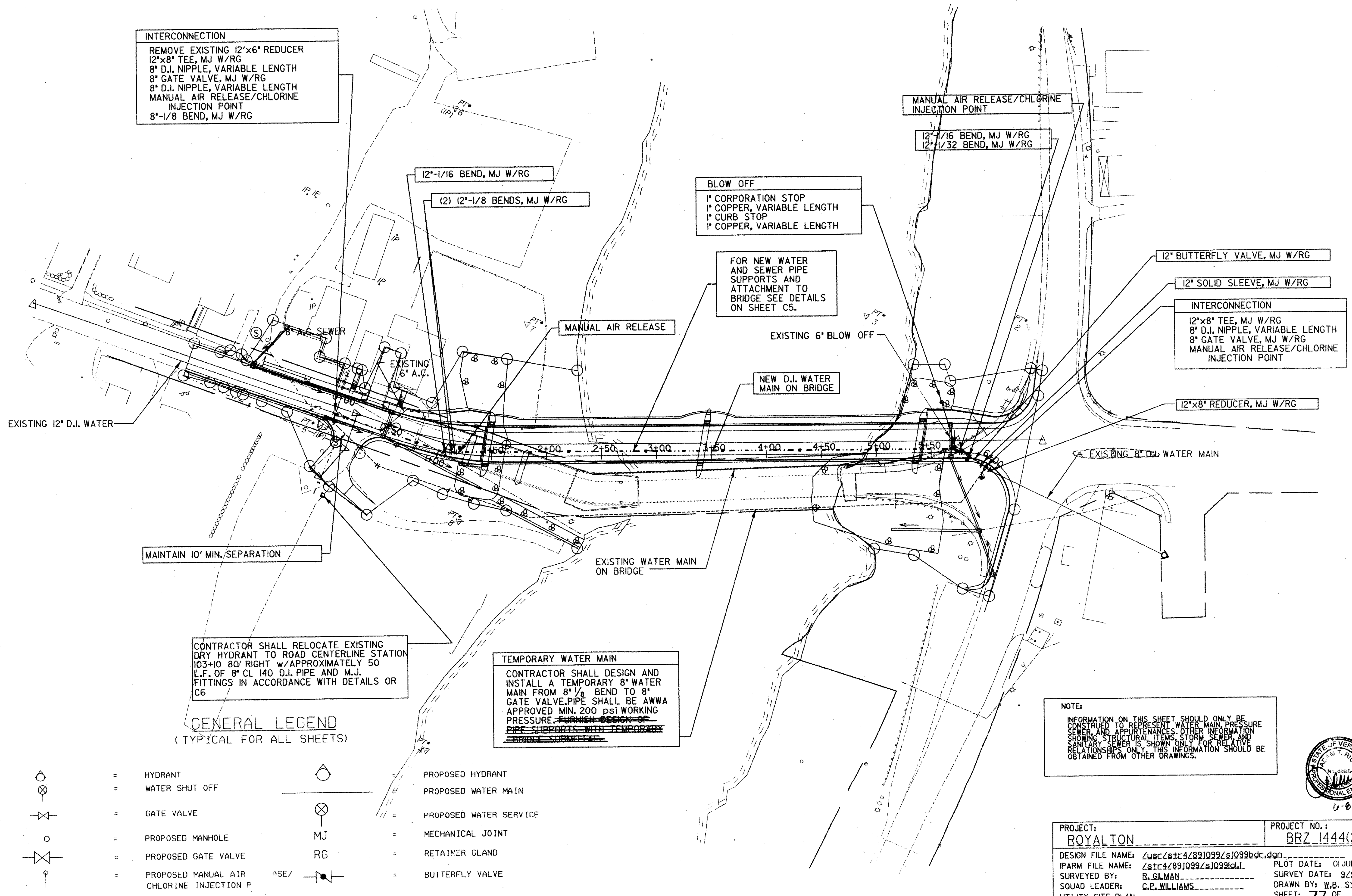
TOWN OF ROYALTON AND ROYALTON FIRE DISTRICT No. 1
 WHITE RIVER BRIDGE UTILITY CROSSING

UTILITY SITE PLAN

VERMONT
SOUTH ROYALTON

Project No.	6170051
Proj. Manager	A. T. RICE
Proj. Designer	R. N. GOODWIN
Drawn By	J. A. M./L. A. W.
Checked By	A. T. RICE
Scale	1" = 40'
Approved	<i>W.B. Williams</i>
Date	APRIL 2000

Sheet 1 of 6
 D 6170051



INTERCONNECTION
 REMOVE EXISTING 12"x6" REDUCER
 12"x8" TEE, MJ W/RG
 8" D.I. NIPPLE, VARIABLE LENGTH
 8" GATE VALVE, MJ W/RG
 8" D.I. NIPPLE, VARIABLE LENGTH
 MANUAL AIR RELEASE/CHLORINE
 INJECTION POINT
 8"-1/8 BEND, MJ W/RG

12"-1/16 BEND, MJ W/RG
 (2) 12"-1/8 BENDS, MJ W/RG

BLOW OFF
 1" CORPORATION STOP
 1" COPPER, VARIABLE LENGTH
 1" CURB STOP
 1" COPPER, VARIABLE LENGTH

FOR NEW WATER
 AND SEWER PIPE
 SUPPORTS AND
 ATTACHMENT TO
 BRIDGE SEE DETAILS
 ON SHEET C5.

MANUAL AIR RELEASE/CHLORINE
 INJECTION POINT
 12"-1/16 BEND, MJ W/RG
 12"-1/32 BEND, MJ W/RG

12" BUTTERFLY VALVE, MJ W/RG
 12" SOLID SLEEVE, MJ W/RG
INTERCONNECTION
 12"x8" TEE, MJ W/RG
 8" D.I. NIPPLE, VARIABLE LENGTH
 8" GATE VALVE, MJ W/RG
 MANUAL AIR RELEASE/CHLORINE
 INJECTION POINT

MAINTAIN 10' MIN. SEPARATION

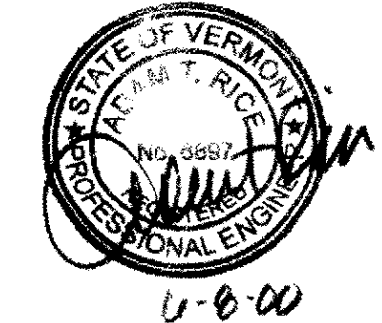
CONTRACTOR SHALL RELOCATE EXISTING
 DRY HYDRANT TO ROAD CENTERLINE STATION
 103+10 80' RIGHT w/ APPROXIMATELY 50
 L.F. OF 8" CL 140 D.I. PIPE AND M.J.
 FITTINGS IN ACCORDANCE WITH DETAILS OR
 C6

TEMPORARY WATER MAIN
 CONTRACTOR SHALL DESIGN AND
 INSTALL A TEMPORARY 8" WATER
 MAIN FROM 8 1/8" BEND TO 8"
 GATE VALVE. PIPE SHALL BE AWWA
 APPROVED MIN. 200 PSI WORKING
 PRESSURE. FURNISH DESIGN OF
 PIPE SUPPORTS WITH TEMPORARY
 BRIDGE SUBMITTALS

GENERAL LEGEND
 (TYPICAL FOR ALL SHEETS)

- | | | | |
|--|---|--|--------------------------|
| | = HYDRANT | | = PROPOSED HYDRANT |
| | = WATER SHUT OFF | | = PROPOSED WATER MAIN |
| | = GATE VALVE | | = PROPOSED WATER SERVICE |
| | = PROPOSED MANHOLE | | = MECHANICAL JOINT |
| | = PROPOSED GATE VALVE | | = RETAINER GLAND |
| | = PROPOSED MANUAL AIR
CHLORINE INJECTION P | | = BUTTERFLY VALVE |

NOTE:
 INFORMATION ON THIS SHEET SHOULD ONLY BE
 CONSIDERED TO REPRESENT WATER MAIN, PRESSURE
 SEWER AND APPURTENANCES. OTHER INFORMATION
 SHOWING STRUCTURAL ITEMS, STORM SEWER, AND
 SANITARY SEWER IS SHOWN ONLY FOR RELATIVE
 RELATIONSHIPS ONLY. THIS INFORMATION SHOULD BE
 OBTAINED FROM OTHER DRAWINGS.



PROJECT: ROYALTON	PROJECT NO.: BRZ 1444(22)
DESIGN FILE NAME: Z:\SC\STR\47891099\SI099BDC.DWG	PLOT DATE: 01 JUL 98
IPARM FILE NAME: Z:\SC\STR\47891099\SI099IAL.I	SURVEY DATE: 9/29
SURVEYED BY: B. GILMAN	DRAWN BY: W.B. SYMONDS
SQUAD LEADER: C.P. WILLIAMS	SHEET: 77 OF 118
UTILITY SITE PLAN	