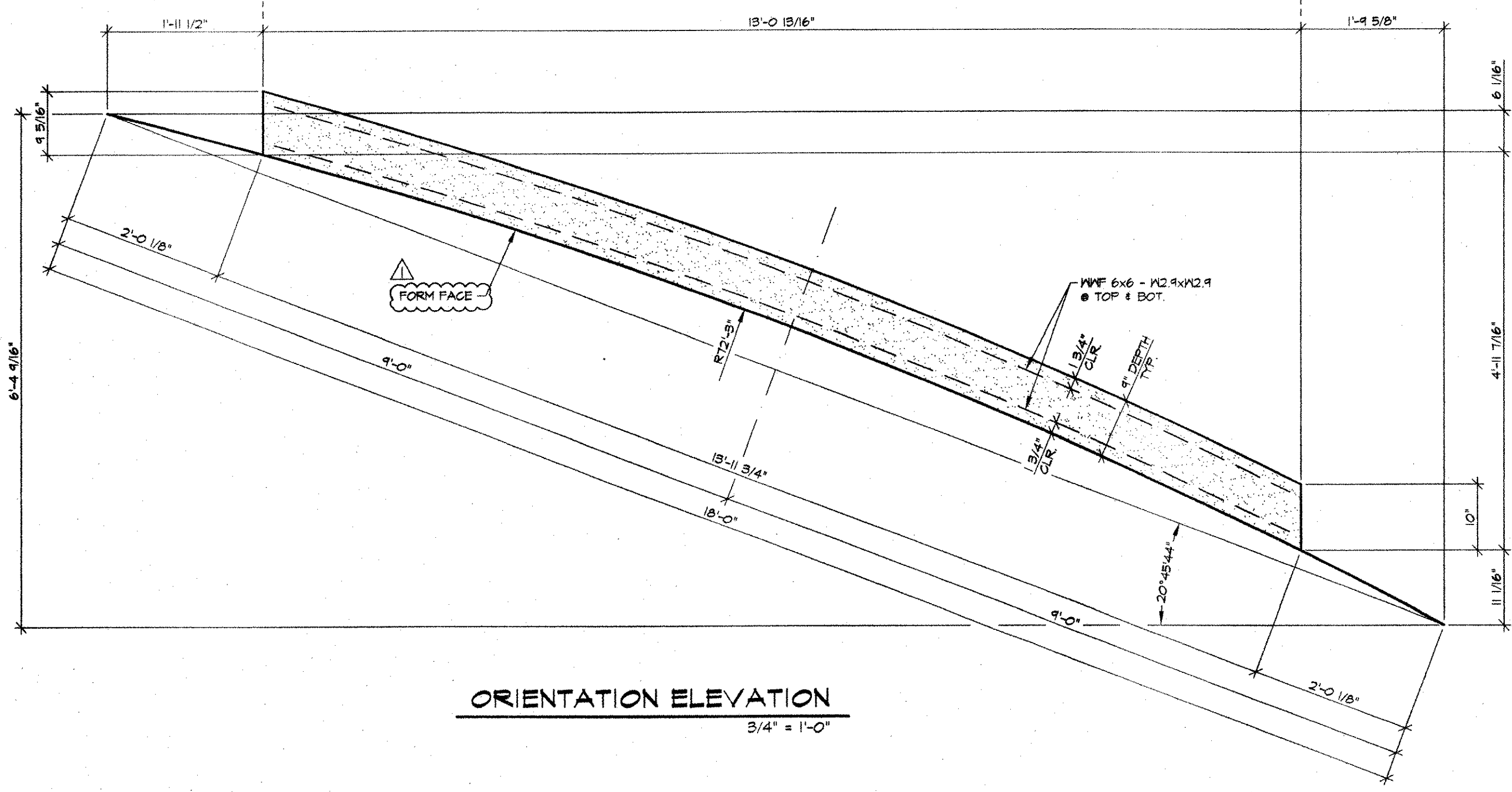
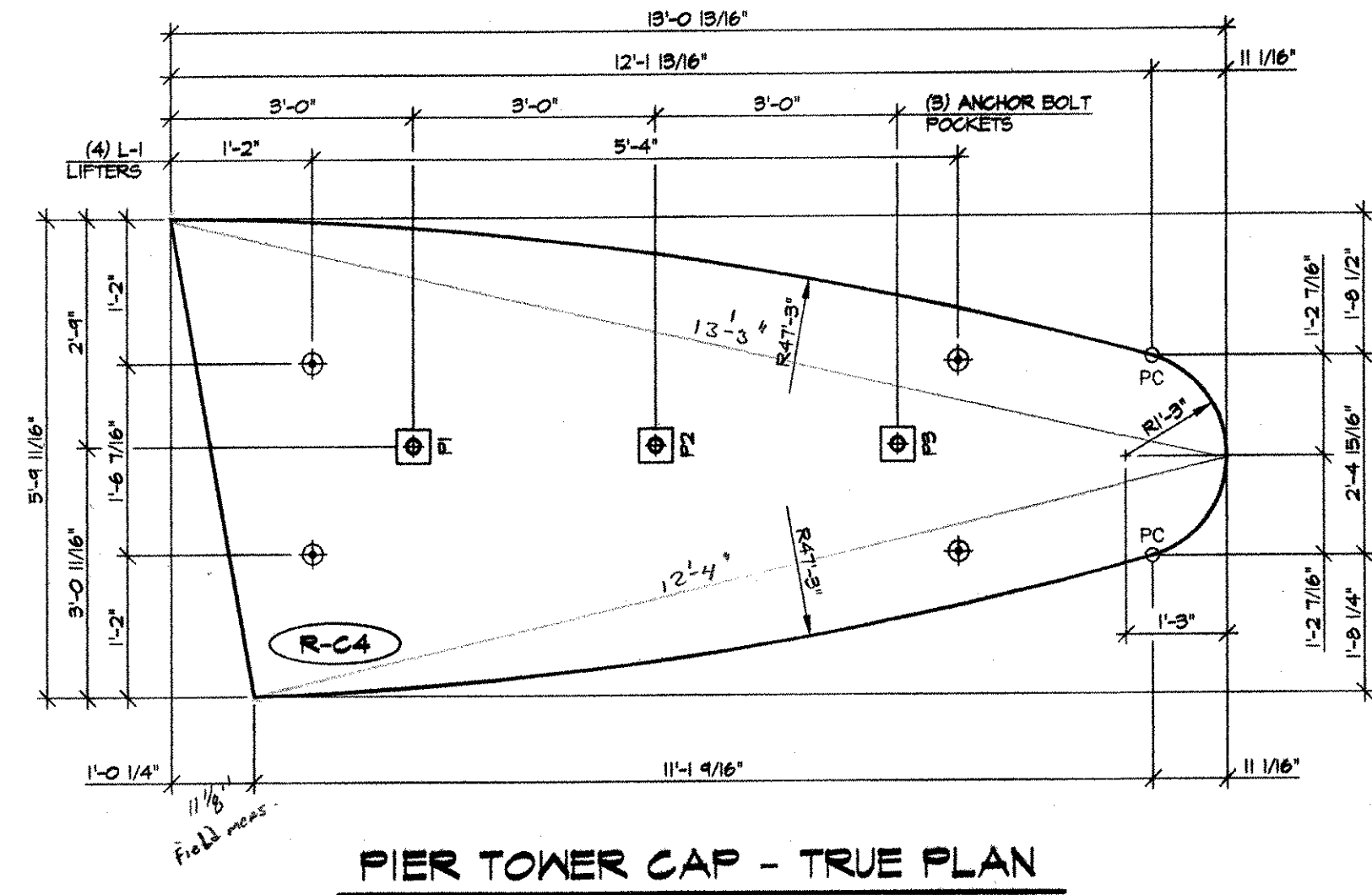


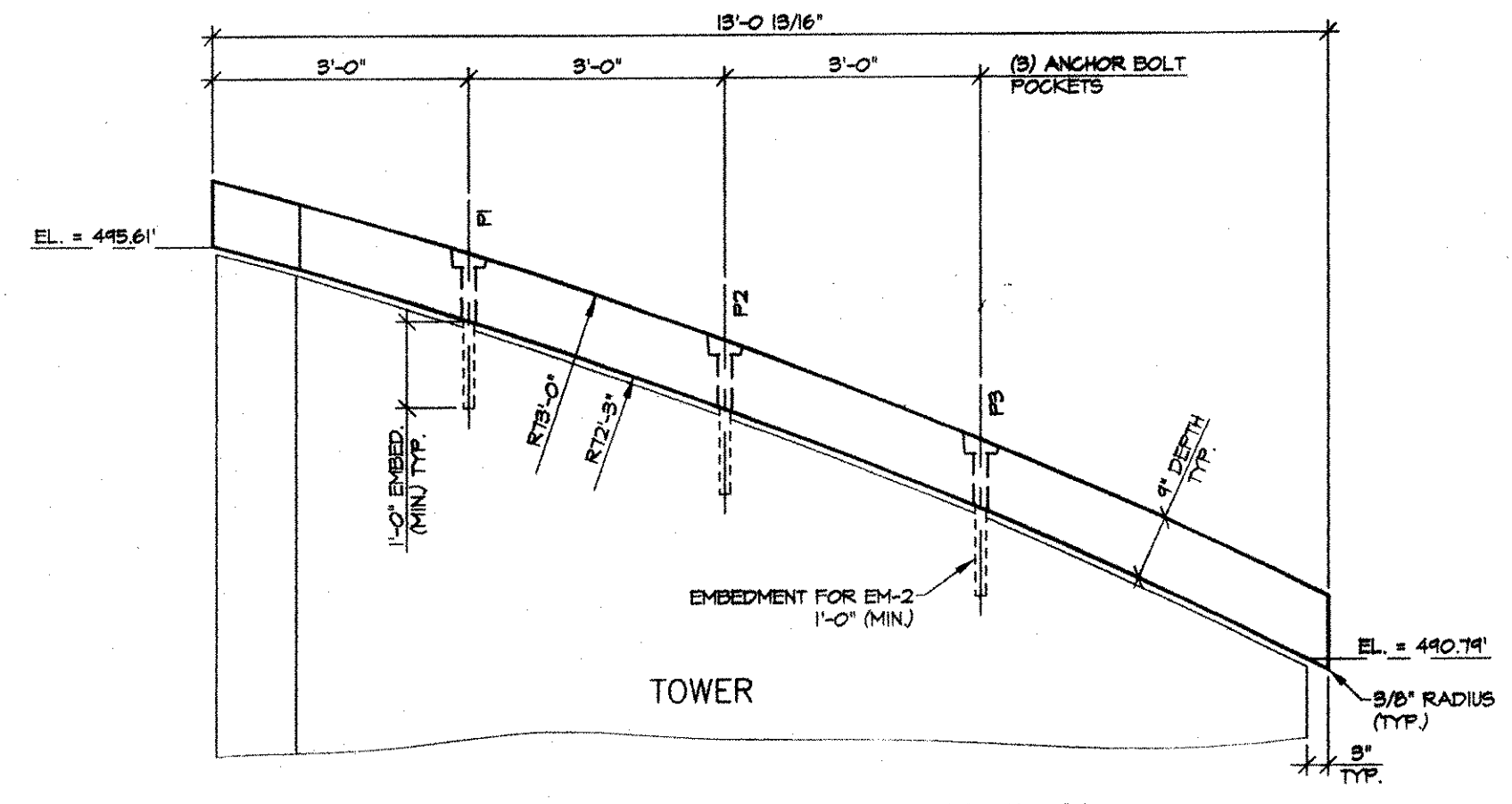
PIER TOWER CAP - GEOMETRY PLAN
3/4" = 1'-0"



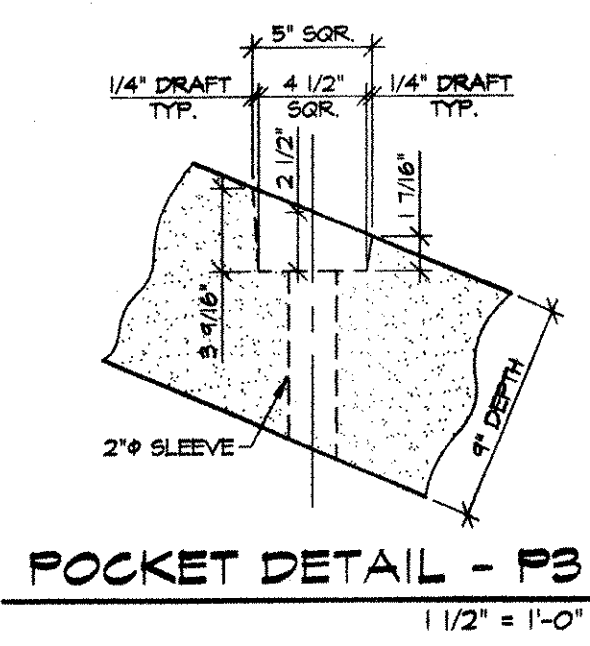
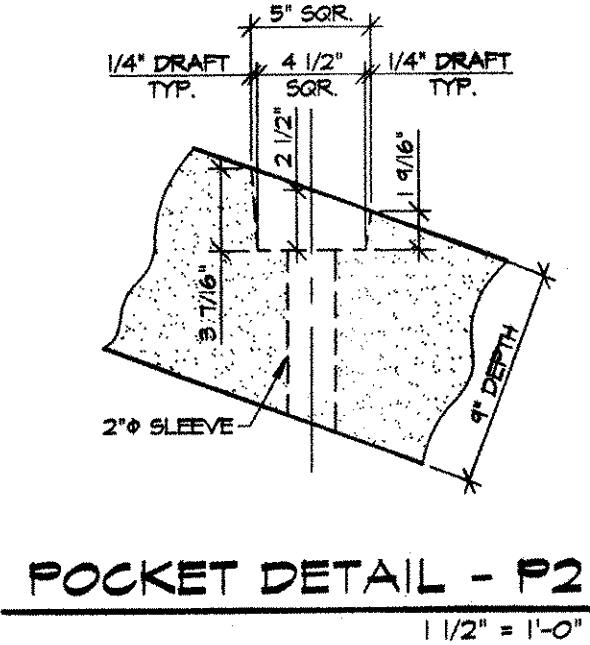
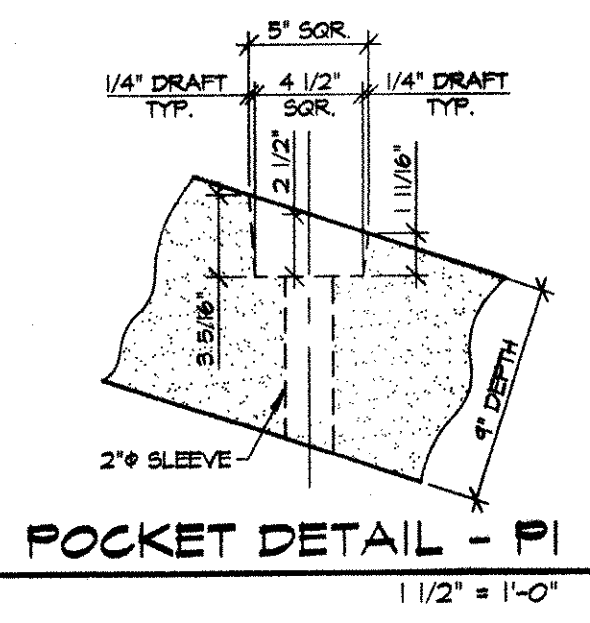
ORIENTATION ELEVATION
3/4" = 1'-0"



PIER TOWER CAP - TRUE PLAN
1/2" = 1'-0"



PIER TOWER CAP ELEVATION
1/2" = 1'-0"



RECEIVED
OK'D BY: WBS OK'D BY: _____
APR 26 2001
RESUBMIT BY: CPW APPROVED DATE: Steel

SHOP NOTE:
Pci = 3,000 PSI (MIN) @ STRIPPING
fc = 5,000 PSI (MIN) @ 28 DAYS

MARK: **R-C4** QTY.: 1 WT./TONS: 3.32 CU. YDS.: 1.64

MATERIALS LIST				
ITEM	MARK	QTY.	DESCRIPTION	REMARKS
1	EM-1	3	1/2" WASHER 1/2"x3"x3" (AASHTO 103, GR. 36) W/ (1) 1/2" HOLE (GALV.)	FOR ERECTION
2	EM-2	3	1 1/4" x 1-9/16" ANCHOR BOLT (GALV.) (ASTM A307, GR. C)	FOR ERECTION
3	EM-3	3	1 1/4" HEAVY HEX NUT (GALV.)	FOR ERECTION
4	L-1	4	IT x 4 3/4" SWIFT LIFT LIFTERS (DAYTON)	
5				
6				
7				
8				
9				
10				

NOTES:
1. ALL SURFACES OF THE PRECAST CAPS (EXCLUDING FORM FACE) SHALL BE GIVEN A RUBBED FINISH PER VAOT STD. SPECIFICATIONS SUB-SECTION 501.16(a)2.
2. ALL EDGES OF PRECAST CAPS SHALL BE FABRICATED TO BE VERTICAL IN THE FINAL ERECTED POSITION.

NO.	DATE	REVISION
1	4-3-01	REVISED FOR APPROVAL

DESIGNED: <u>E.J. BROD</u>
CHECKED: _____
APPROVED: _____

DRAWN: E.M. LOPEZ
DESIGNED: E.J. BROD
CHECKED: _____
APPROVED: _____

J.P. CARRARA & SONS INC.
Precast & Prestress Manufacturer
2464 CASE STR., MIDDLEBURY, VERMONT 05753
Phone: (802)388-6361 Fax: (802)388-9010

Double-Tees Hollow-Core Plank Flat Panels

BECK & BELLUCCI, INC.
10 SALISBURY ROAD, PO BOX 429
FRANKLIN, NEW HAMPSHIRE 03235

Project Name:
ROYALTON BRIDGE
BRZ 1444 (22)
ROYALTON, VERMONT

PIER TOWER CAP DETAILS

SCALE: NOTED JOB #: 23111-00
DATE: 1-10-01 SHEET #: PC4