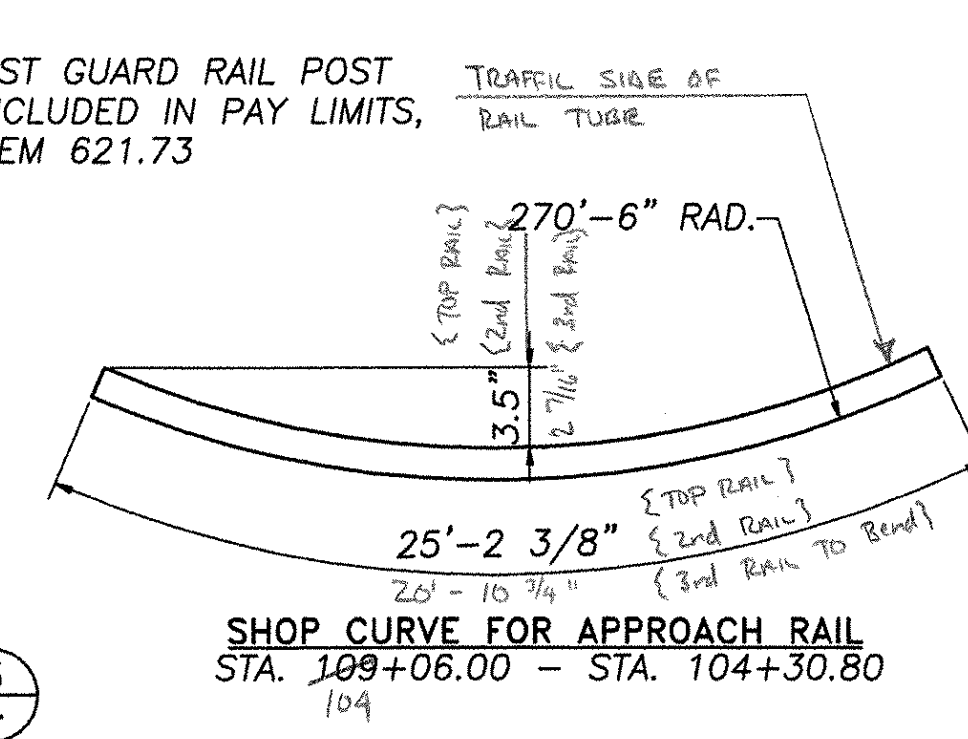
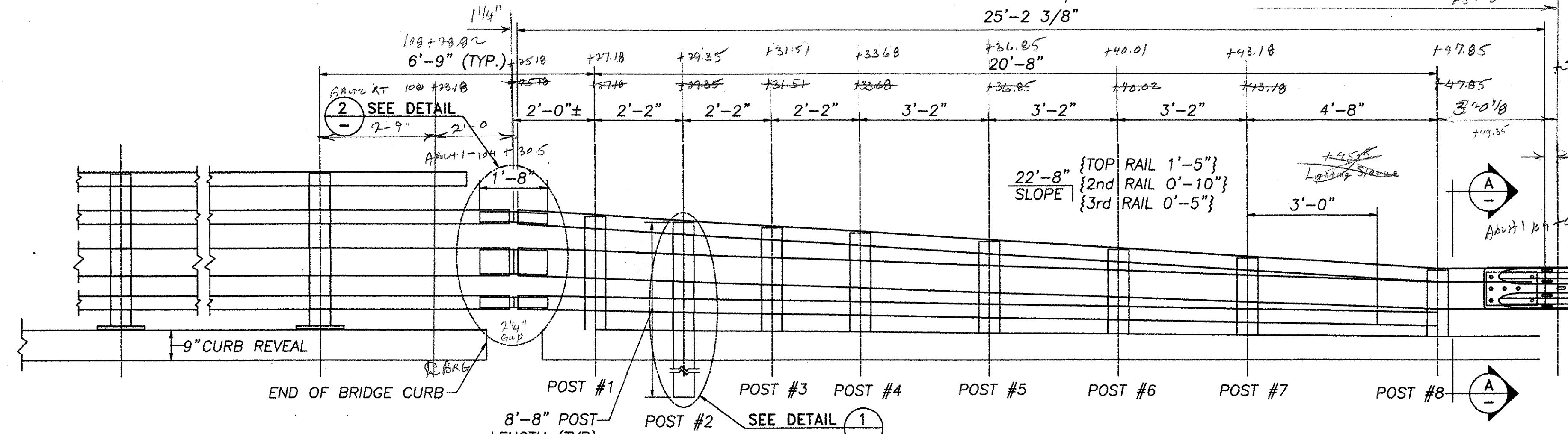
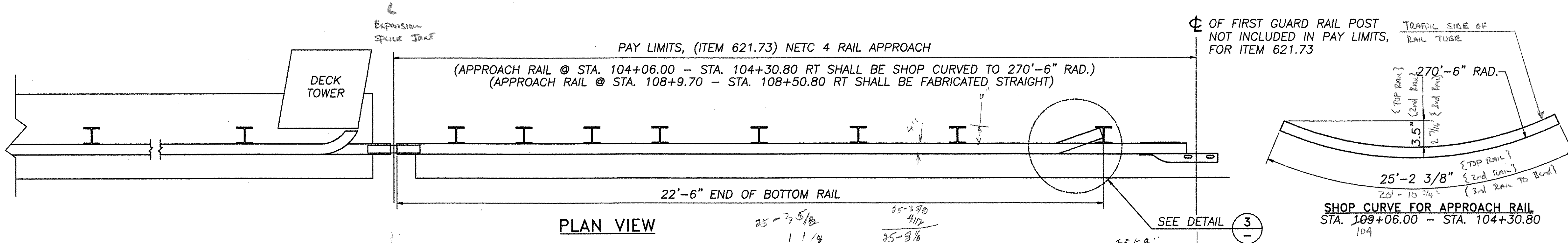
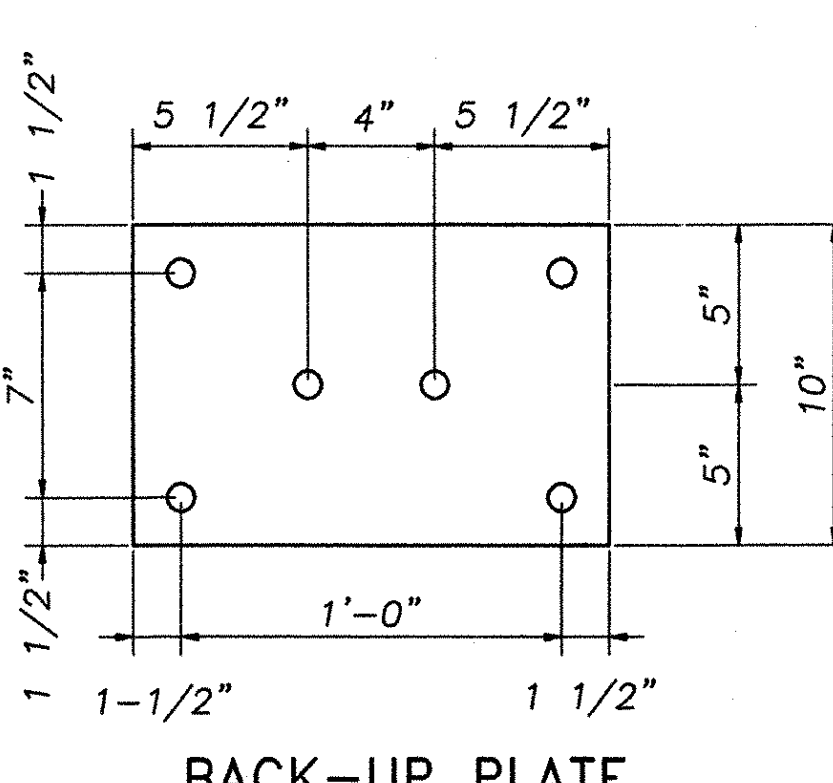
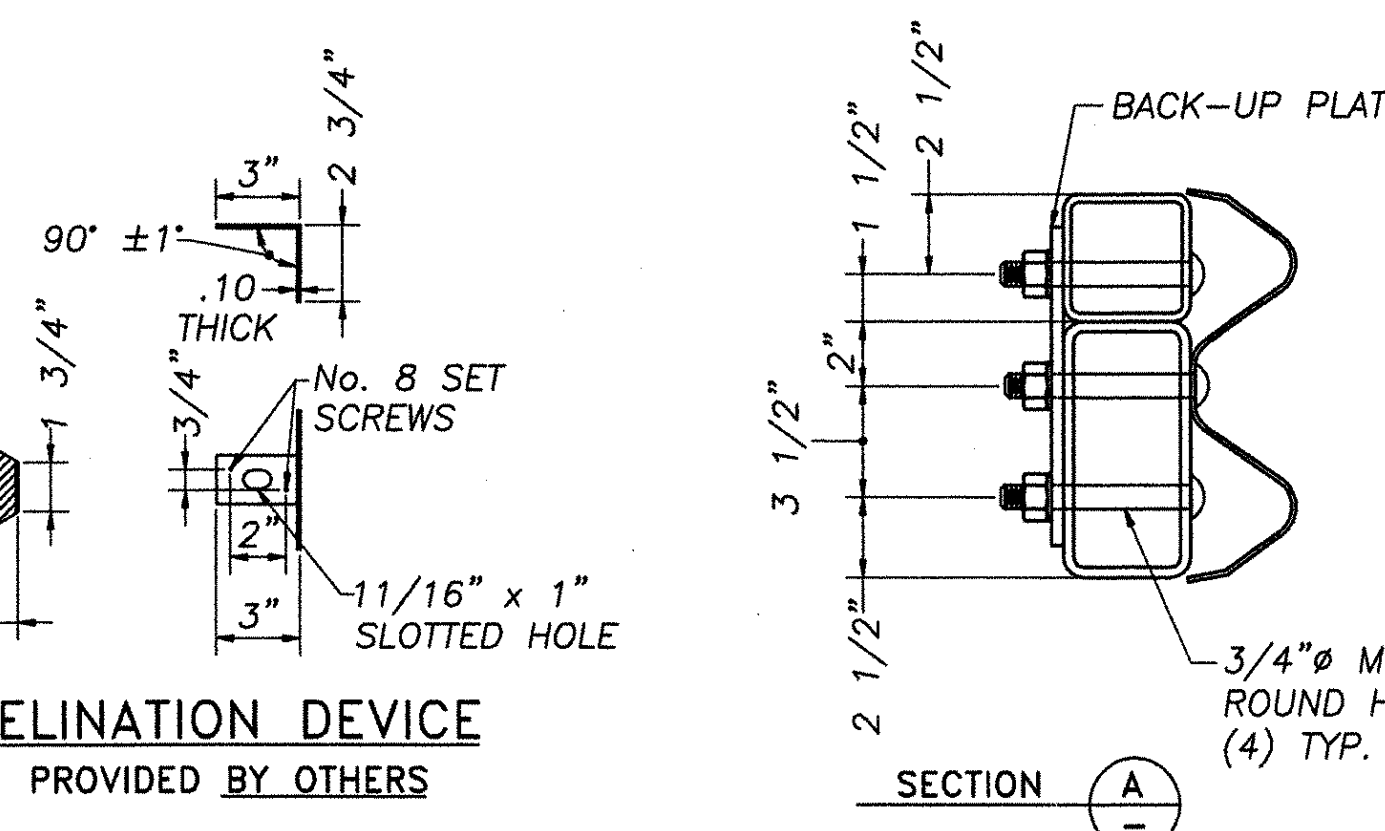
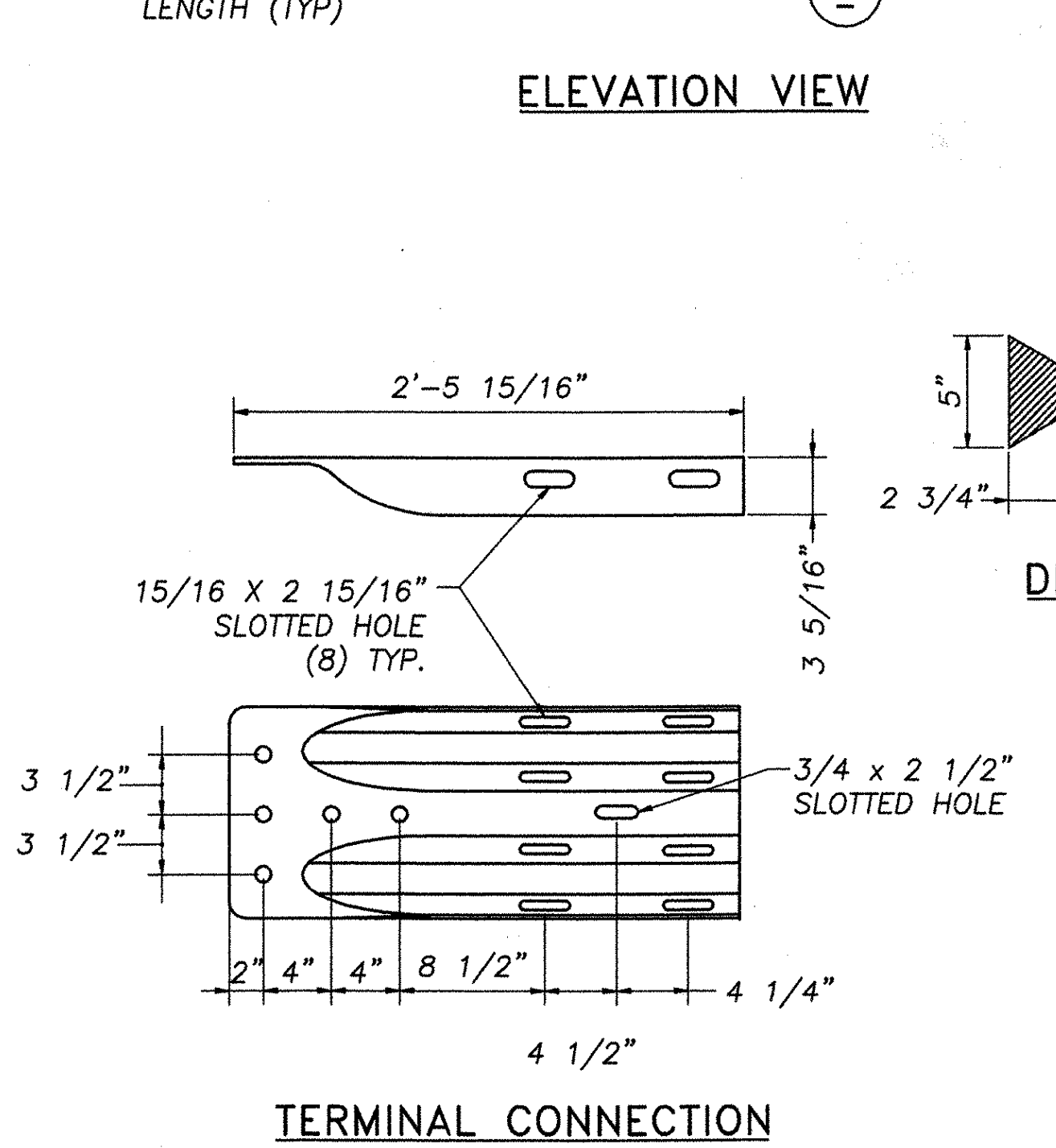
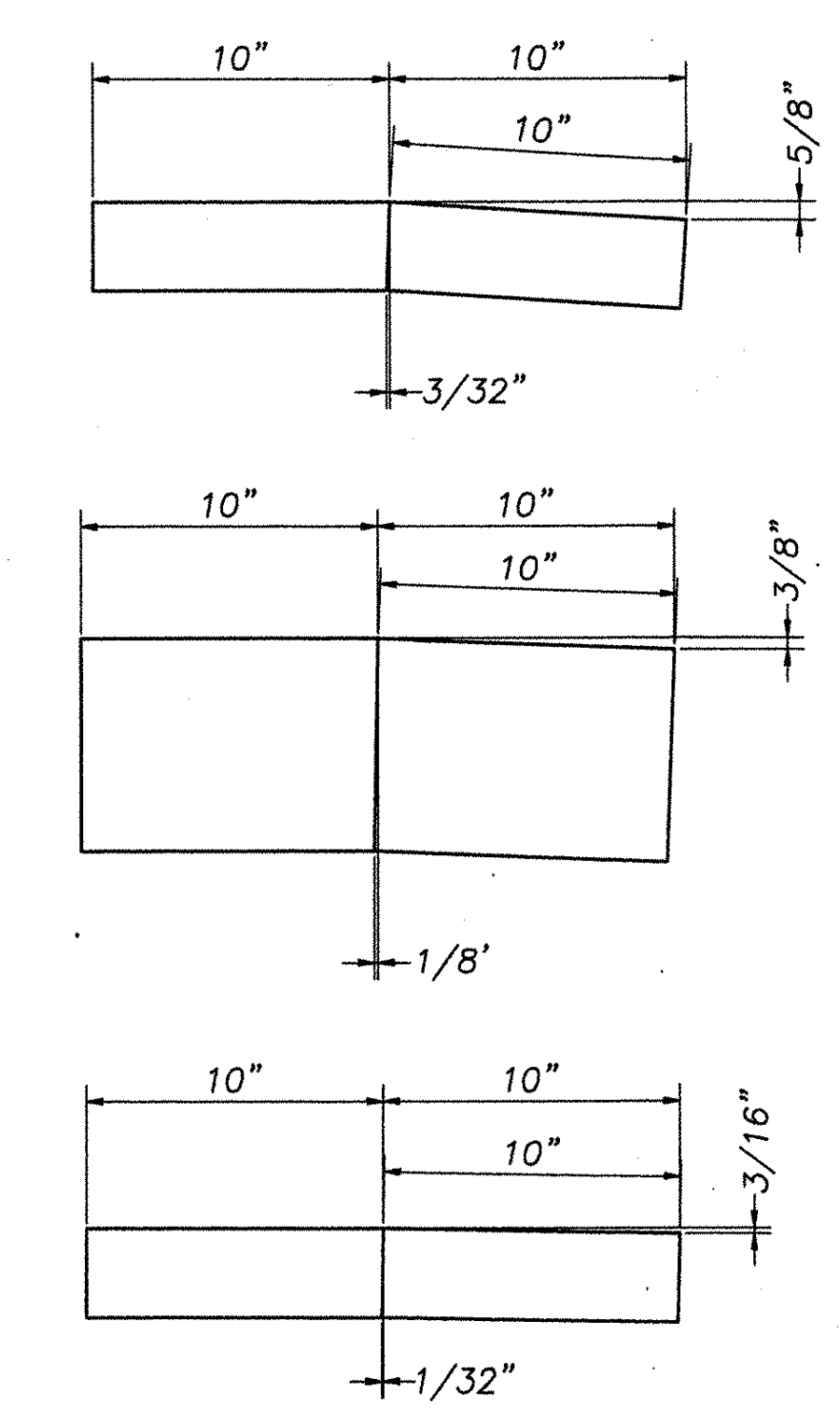
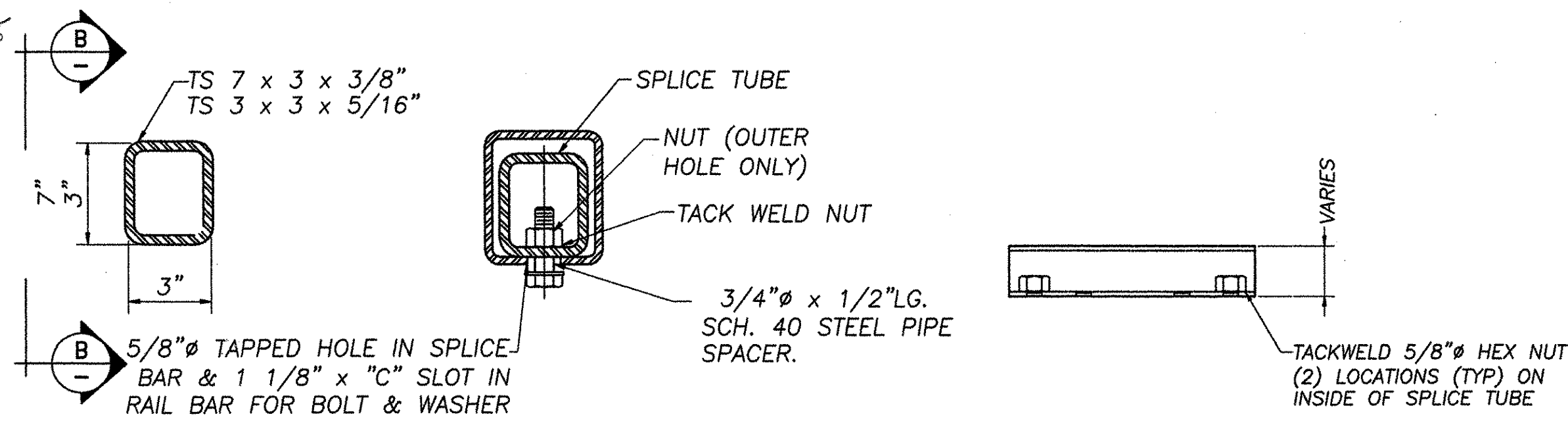


25-015
22-8
3-014

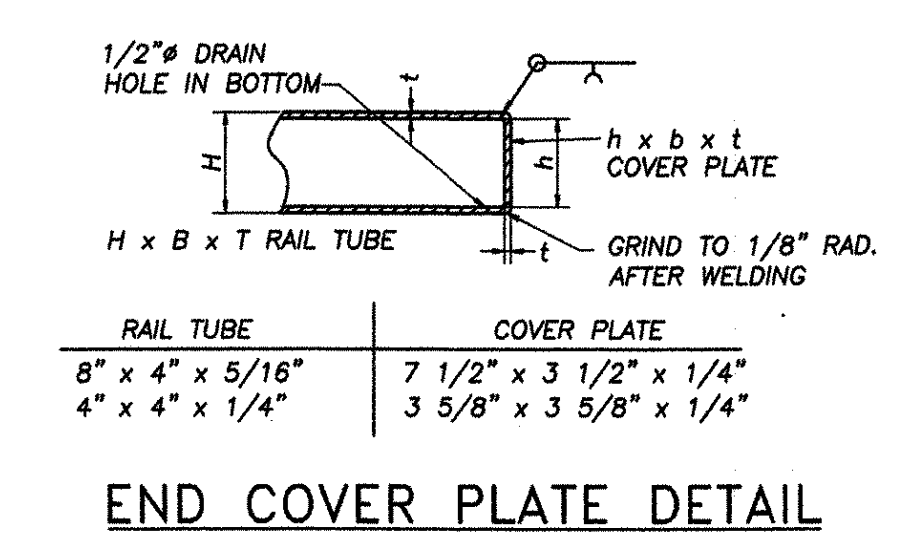
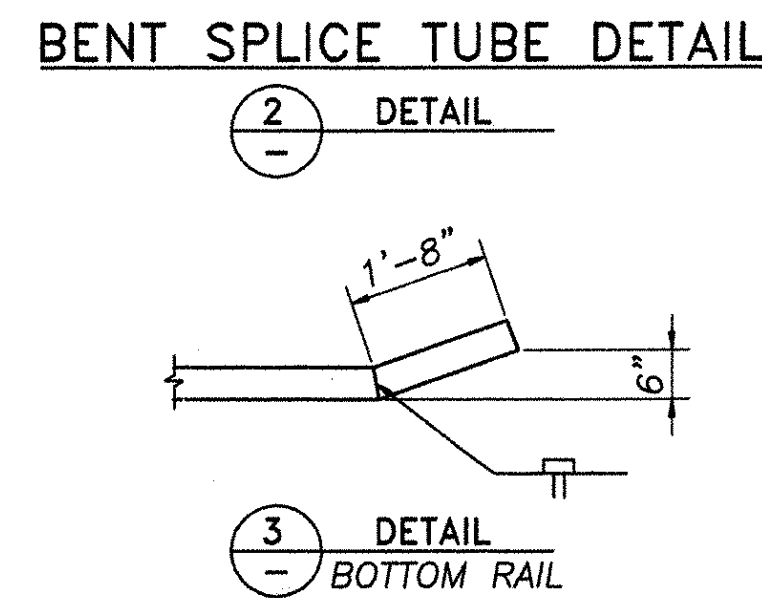
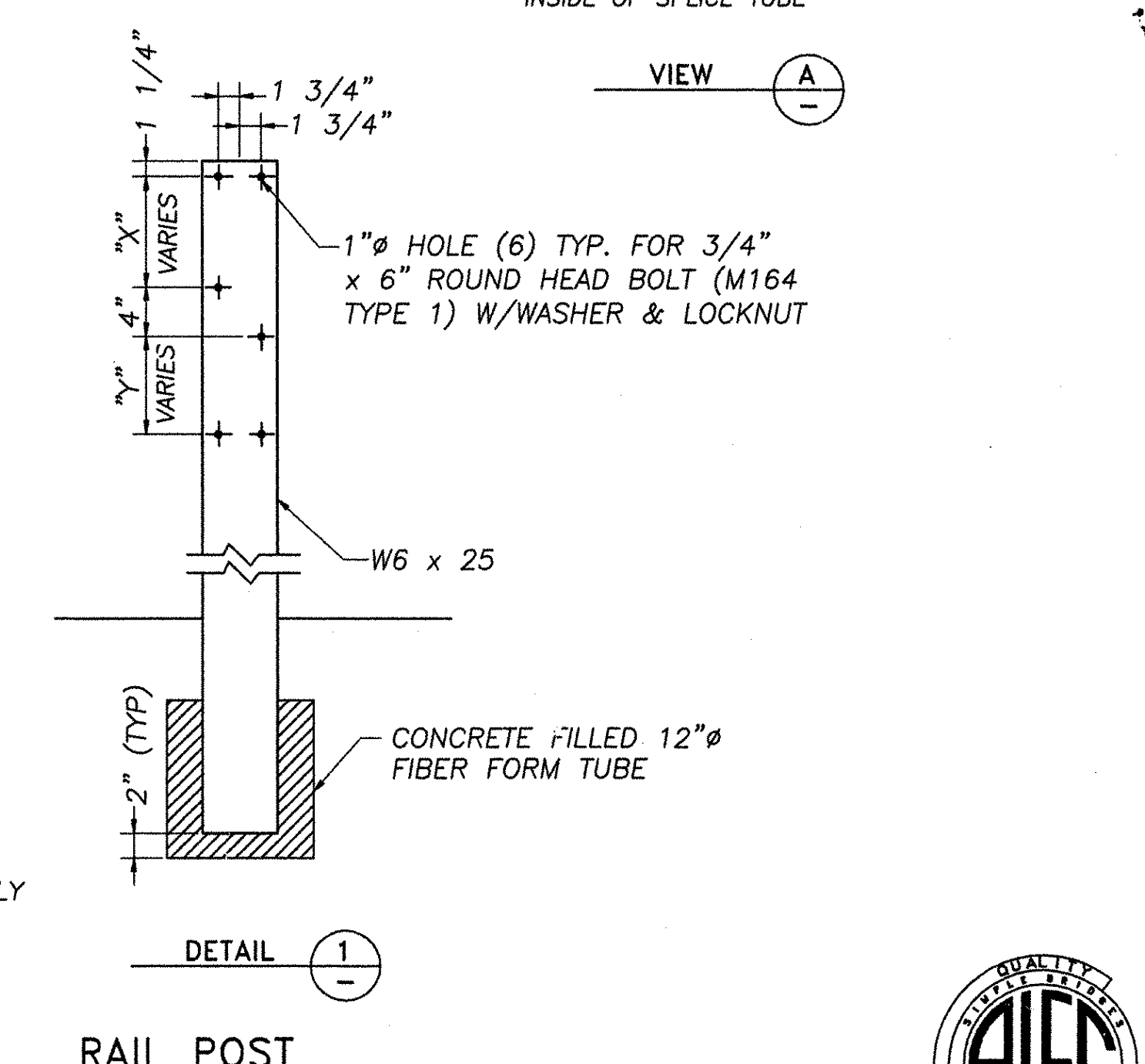
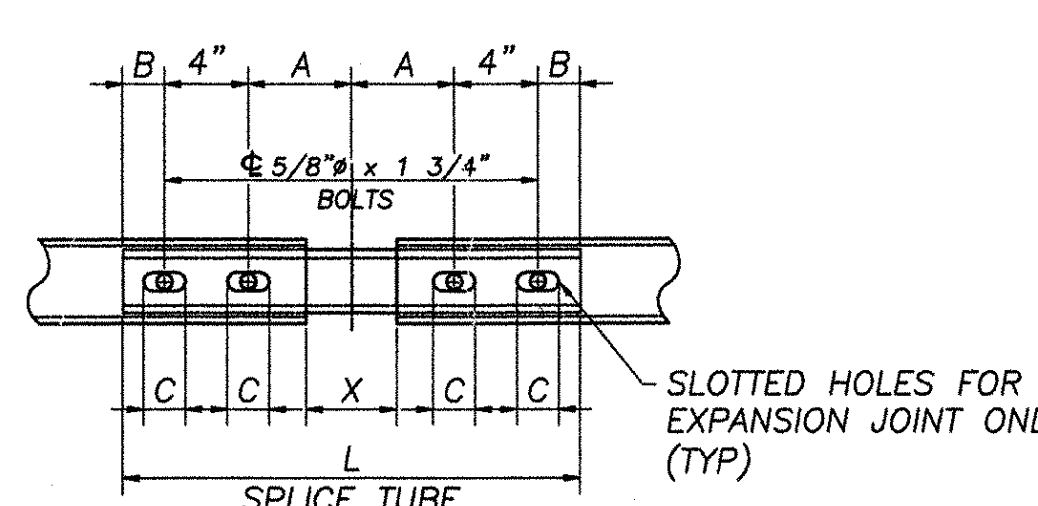


Mk.	Qty.	Description
1	1	TS 4 x 4 x 1/4" (25'-2 3/8" OAL)
1	1	TS 8 x 4 x 5/16" (25'-2 3/8" OAL)
1	1	TS 4 x 4 x 1/4" (22'-6" OAL) W/SHOP BEND
1	1	TS 4 x 4 x 1/4" (25'-2 3/8" OAL) W/SHOP CURVE
1	1	TS 8 x 4 x 5/16" (25'-2 3/8" OAL) W/SHOP CURVE
1	1	TS 4 x 4 x 1/4" (22'-6" OAL) W/SHOP CURVE & SHOP BEND
4	4	TS 3 x 3 x 5/16" (1'-8" OAL) SPLICE TUBE, CUT & WELD
2	2	TS 7 x 3 x 3/8" (1'-8" OAL) SPLICE TUBE, CUT & WELD
16	16	W6 x 25 POST 8'-8" OAH
2	2	TERMINAL CONNECTION
2	2	BACK-UP PLATE 3/8" x 10" x 1'-3"
104	104	3/4" M164 ROUND HEAD BOLT W/WASHER & LOCKNUT
24	24	3/4" x 1/2" LG. SCH. 40 SPACER PIPE
24	24	5/8" x 1 3/4" BOLT W/WASHER

NOTE: SEE NOTES ON SHEET 2 OF 2, BRIDGE RAIL - NETC 4 RAIL FOR MATERIAL AND CONSTRUCTION REQUIREMENTS.



# POST	"X"	"Y"
1	10 3/8"	9 9/16"
2	9 3/4"	9 1/8"
3	9"	8 5/8"
4	8 3/8"	8 1/4"
5	7 3/8"	7 1/2"
6	6 7/16"	6 13/16"
7	5 7/16"	6 1/8"
8	4"	5 3/16"



SPLICE & EXPANSION JOINT TABLE					
"T"	"A"	"B"	"C"	"L"	"X"
SPLICE	4"	2"	--	20"	3/4"
≤ 4"	4"	2"	2-1/2"	20"	2-1/2"

T" = TOTAL REQUIRED MOVEMENT * = SINGLE SLOT

REVISIONS		
No.	Remarks	Date
0	Initial submittal	10/16/01
	Second Submittal	3/12/02
	Third Submittal	4/10/02

RECEIVED
APR 23 2002
RESUBMIT APPROVED BY [Signature] DATE 4/30/02

HIGHWAY SAFETY CORP.
GLASTONBURY, CT

ITEM 621.73 - NETC 4 RAIL - APPROACH
PROJECT No. AC BRZ 1444(22)
TOWN OF ROYALTON
TH1 OVER THE WHITE RIVER
(BRIDGE No. 3) WINDSOR COUNTY

DRAWN J. Ruiz
CHECKED [Signature]
DATE 10/15/01
SCALE N.T.S.
HSC REFERENCE NO. 1271
GENERAL CONTRACTOR [Signature]
SUB CONTRACTOR F.R. LAFAYETTE
SIZE D REVISION 0
SHEET NO. 1 of 1

