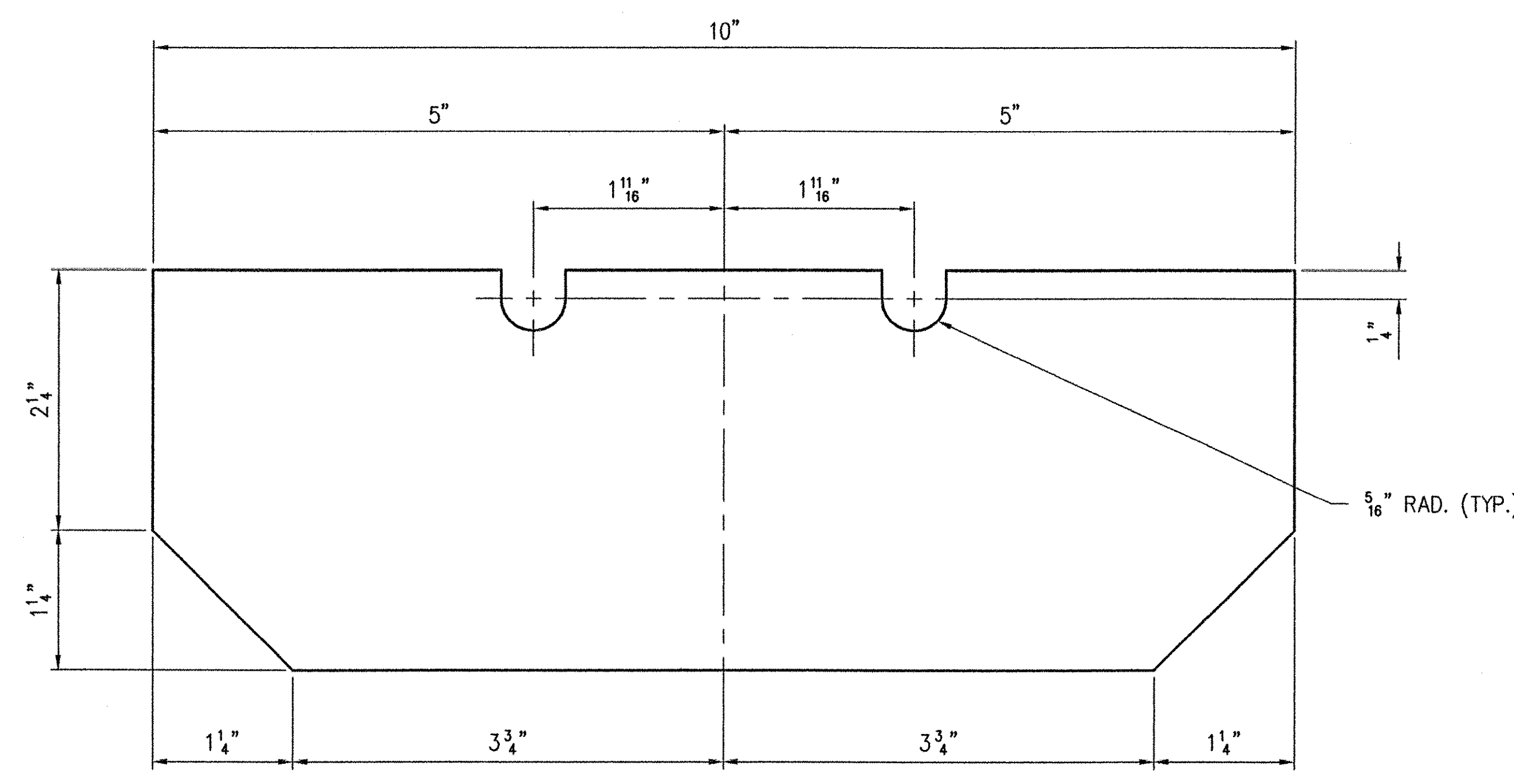
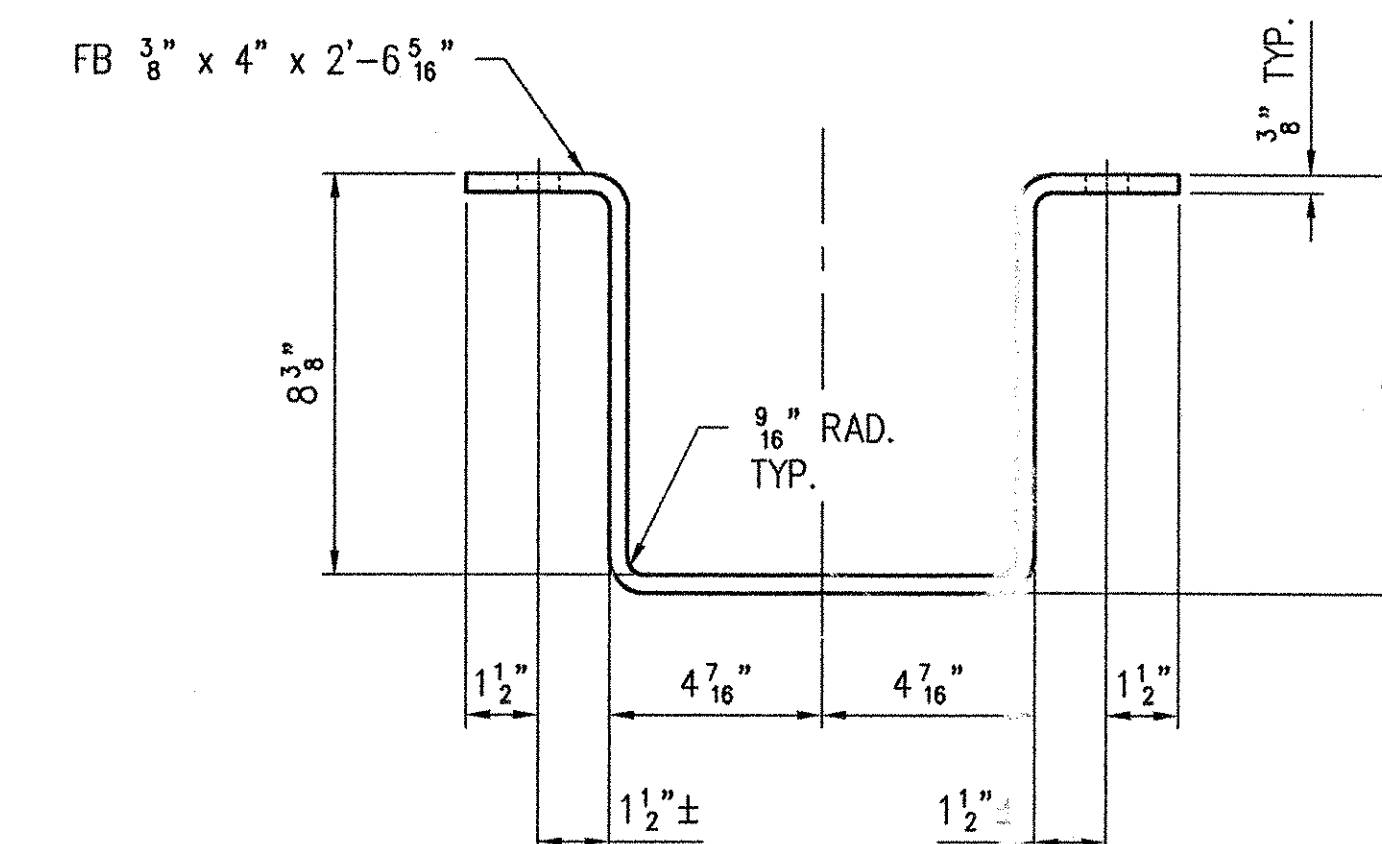
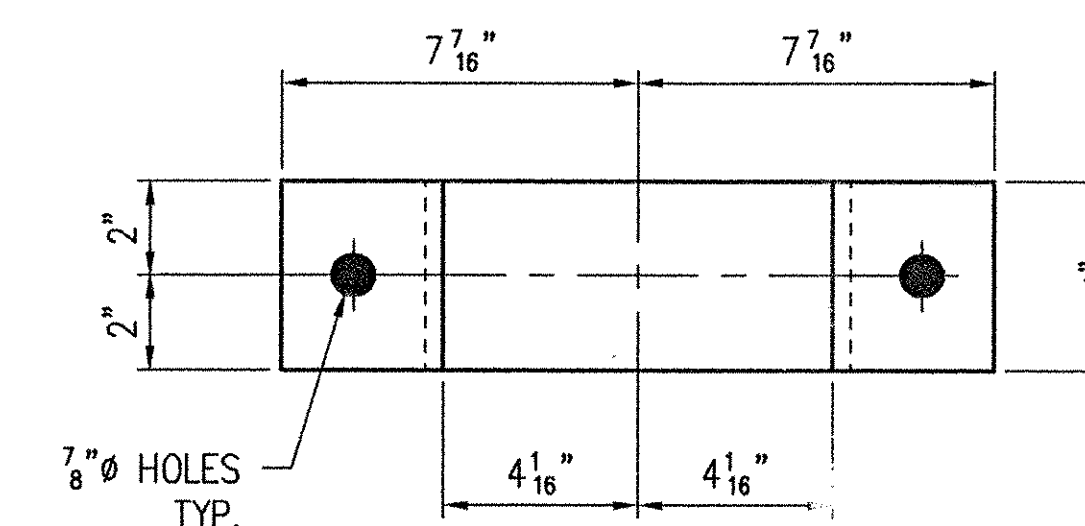
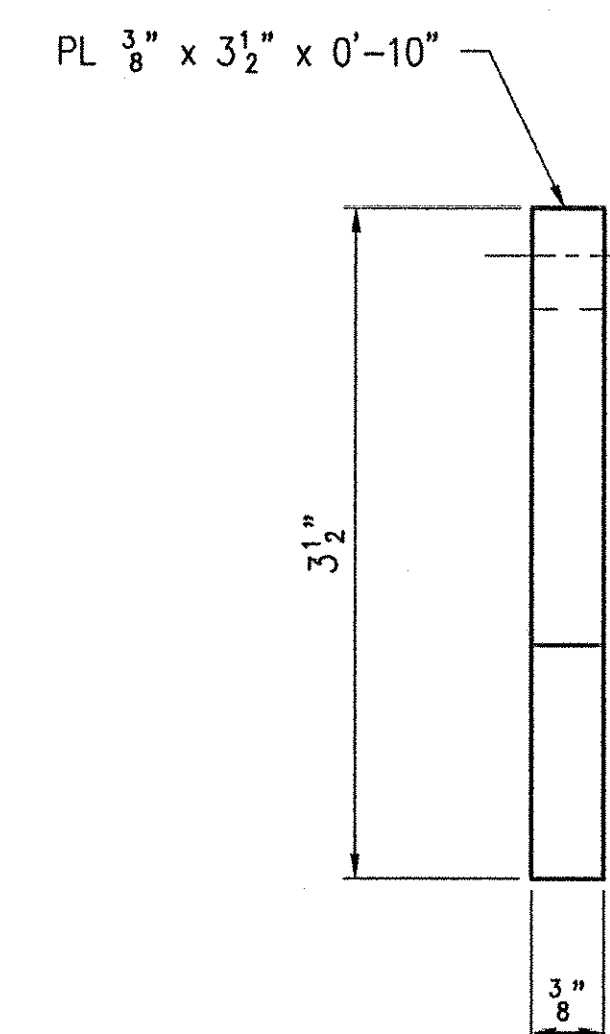


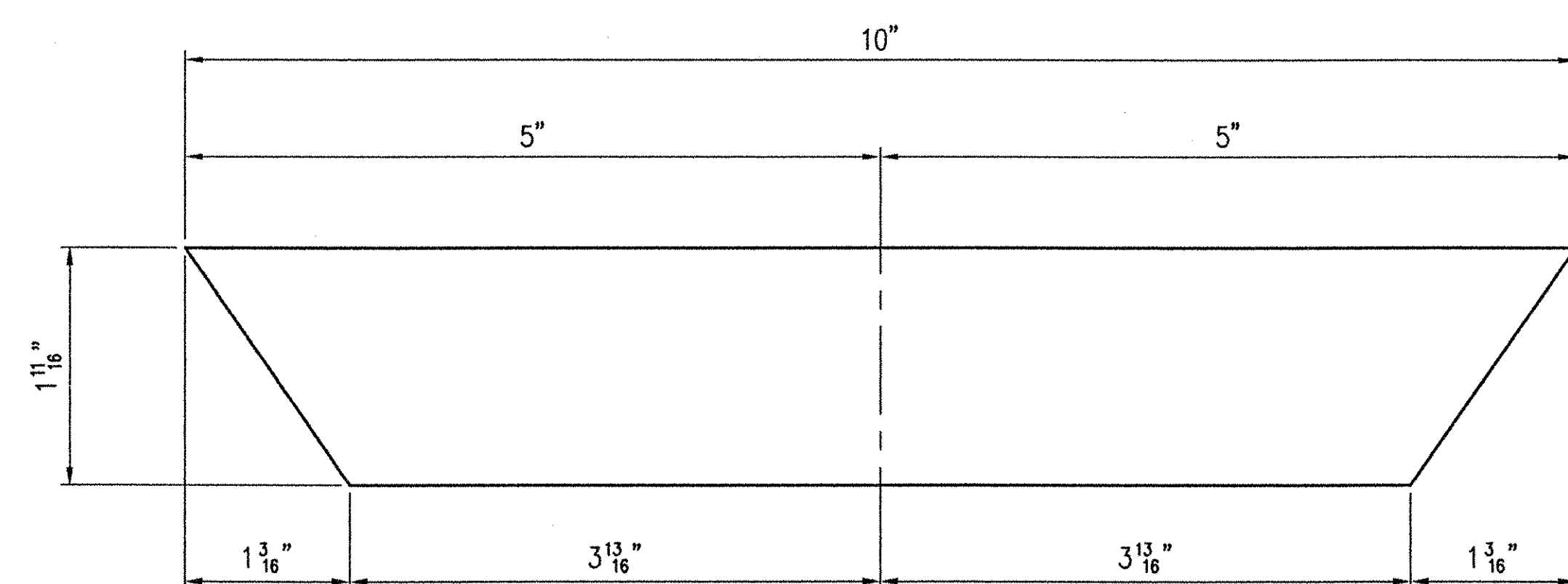
LINE NO.	NO. REQ'D.	DESCRIPTION	LENGTH	MK	REMARKS	PART NO.
1	4	BRACKET(S)		2A	HDG	
2	4	FB $\frac{3}{8}$ " x 4"	A36 2'-6 $\frac{5}{16}$ "	2A	BEND	16-76
3						
4		FIELD BOLT :				
5	12	M $\frac{3}{4}$ " WEDGE ANCHOR	MG 0'-8 $\frac{1}{2}$ "	2B	RAWL #7748	30-27



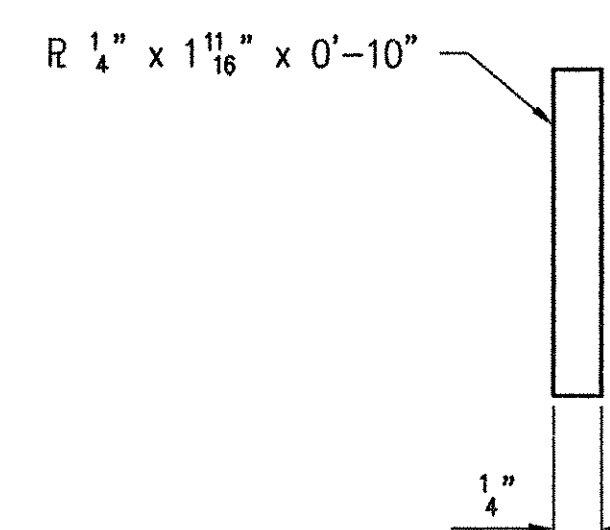
DETAIL (pa)



4 - BRACKET(S) - 2A 13,406s each weighed on site 068 8/28/01



DETAIL (ba)



GENERAL NOTES:

- 1.) MATERIAL AND WORKMANSHIP SHALL BE IN ACCORDANCE WITH VT/AOT "STANDARD SPECIFICATIONS FOR CONSTRUCTION - 1990 EDITION" THE CURRENT SUPPLEMENTAL SPECIFICATIONS AND THE SPECIAL PROVISIONS.
- 2.) WELDING SHALL CONFORM TO ANSI/AASHTO/AWS D1.5 BRIDGE WELDING CODE.
- 3.) ALL STEEL SHALL COMPLY WITH AASHTO M270 GR 36 (ASTM A709 GR 36). TUBE STEEL SHALL COMPLY WITH ASTM A500 GR B.
- 4.) GALVANIZE STEEL SHAPES AFTER FABRICATION PER AASHTO M111 (ASTM A123).
- 5.) GALVANIZE HARDWARE PER AASHTO M232 (ASTM A-153 CLASS C).
- 6.) PRIOR TO GALVANIZING, ALL CORNERS AND EDGES OF STEEL PLATES, ETC., SHALL BE GROUND TO A 1/16 INCH RADIUS.

RECEIVED  
 JUN 11 2001  
 APPROVED  
 DATE 7/13/01

REV.	DESCRIPTION	DATE	INT.
	ANY AND ALL BACKCHARGES WILL BE REJECTED UNLESS WRITTEN CONSENT IS GIVEN BY LEWIS ENGINEERING COMPANY PRIOR TO ANY WORK PERFORMED FOR OUR ACCOUNT. SUCH REJECTION MEANS THAT INVOICES WILL NOT BE HONORED OR DEDUCTIONS FROM PAYMENT WILL BE CHARGED BACK.		
4201 NOREX DRIVE - CHASKA, MINNESOTA 55318 - (612) 368-3000			
SHOP	PROJECT	ROYALTON ~ ROUTE NO. T.H. 1 ~ C.L. 1 BRIDGE NO. 3	
	STATE PROJECT	AC BRZ 1444(22)	
	FEDERAL PROJECT	-	
APPROVAL	CUSTOMER	BECK & BELLUCCI, INC.	
	LOCATION	WINDSOR COUNTY, VT	
	DESCRIPTION	SCUPPER & BRACKET DETAILS	
	FOR DATE		
	PRINTS ISSUED	SHEET NO. 2 OF 5	
		Job. No. : 2034.1236.1	

Orig.  
 W.P. ch'k'd  
 Drawn By JMB  
 Chk'd. By TSF  
 Date: 5/25/01