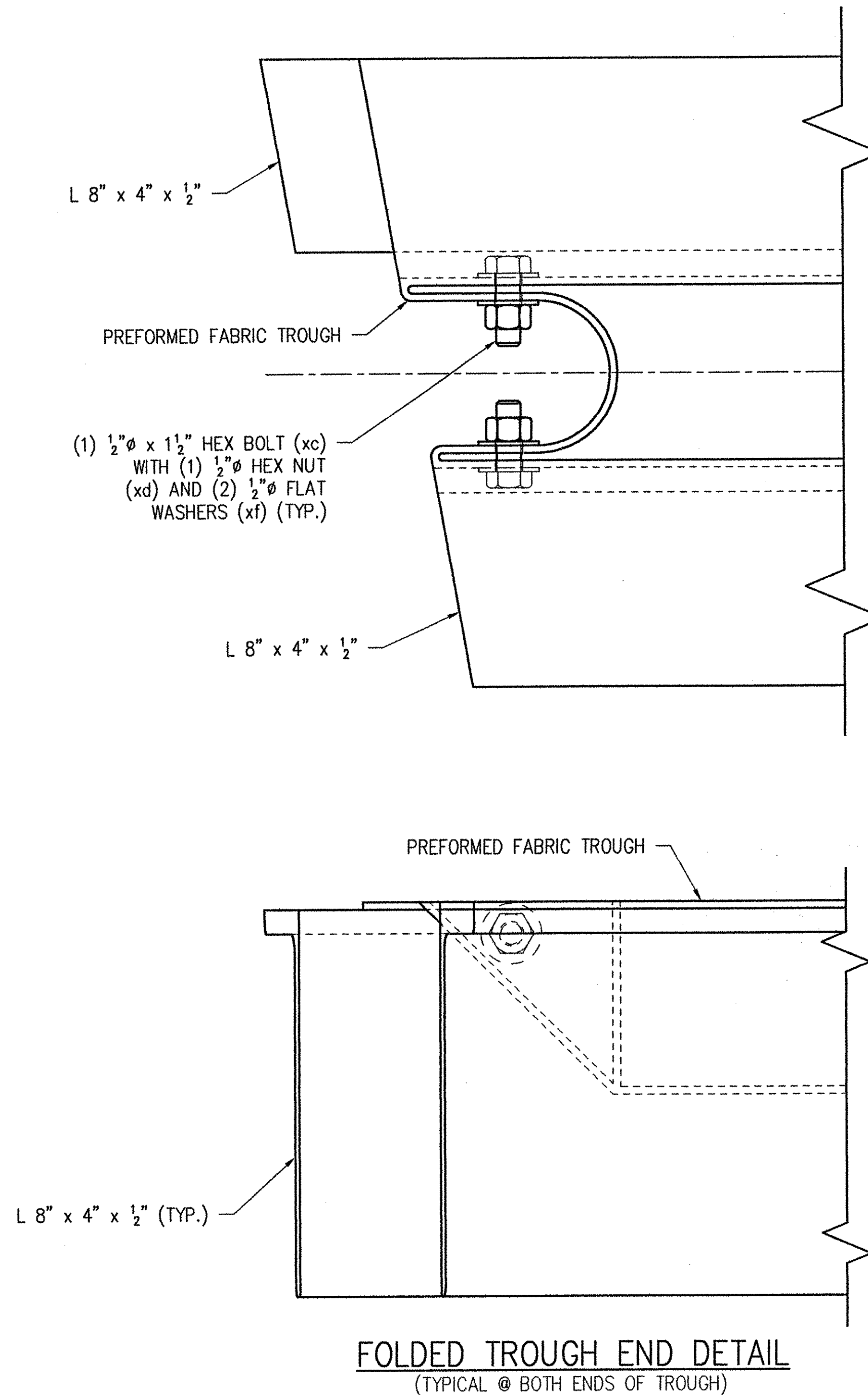


**GENERAL NOTES**

- 1.) ALL MATERIALS AND CONSTRUCTION SHALL CONFORM TO STATE OF VERMONT, AGENCY OF TRANSPORTATION STANDARD SPECIFICATIONS FOR CONSTRUCTION, DATED 1990, AND ITS LATEST REVISIONS, THE AASHTO STANDARD SPECIFICATIONS FOR HIGHWAY BRIDGES, DATED 1996, AND ITS LATEST REVISIONS, AND THE SPECIAL PROVISIONS.
- 2.) STEEL SHALL CONFORM TO ASTM A709 GRADE 36 (AASHTO M270 GRADE 36).
- 3.) WELDING SHALL MEET THE REQUIREMENTS OF THE ANSI/AASHTO/AWS D1.5 BRIDGE WELDING CODE AS MODIFIED BY STANDARD SPECIFICATIONS.
- 4.) FOR STUD REPAIR USE FF-STUD-REP-01 OR SM-STUD-REP-01.
- 5.) BOLTS SHALL BE HIGH STRENGTH AND CONFORM TO ASTM A325 (AASHTO M164). ALL FIELD HARDWARE IS TO BE GALVANIZED PER ASTM A153 (AASHTO M232). ALL SHOP HARDWARE IS TO BE GALVANIZED PER ASTM B695 (AASHTO M298 CLASS 50).
- 6.) STEEL SHALL BE GALVANIZED PER ASTM A123 (AASHTO M111).
- 7.) PREFORMED FABRIC TROUGH SHALL CONFORM TO STATE OF VERMONT, AGENCY OF TRANSPORTATION STANDARD SPECIFICATIONS FOR CONSTRUCTION, DATED 1990, SUB-SECTION 707.07.
- 8.) BUTYL RUBBER TAPE SHALL CONFORM TO AASHTO M198 TYPE II.
- 9.) SHOP INSPECTION TO BE DONE BY VAOT.
- 10.) PRIOR TO GALVANIZING, ALL CORNERS AND EDGES OF STEEL PLATES SHALL BE GROUND TO  $\frac{1}{16}$ " RADIUS.
- 11.) THE JOINT SHALL BE SHOP ASSEMBLED AND SHIPPED AS ONE UNIT.
- 12.) SEAL ALL ACCESSIBLE JOINTS FOR GALVANIZING (FSEALWELD01).



**SHOP NOTE:**  
 FOLD PREFORMED FABRIC TROUGH AS SHOWN. DRILL  $\frac{3}{8}$ " HOLES THRU AND FASTEN AS SHOWN WITH  $\frac{1}{2}$ " HARDWARE.

LINE NO.	NO. REQ'D.	DESCRIPTION	LENGTH	MK	REMARKS	PART N
1	1	EXPANSION JOINT	44'-5 1/2"	1A	HDG	
2	1	L 8" x 4" x 1/2"	A36 9'-1 5/8"	aa16		15-10
3	1	L 8" x 4" x 1/2"	A36 9'-1 1/8"	ab16		15-10
4	1	L 8" x 4" x 1/2"	A36 31'-5 3/8"	ac16		15-10
5	1	L 8" x 4" x 1/2"	A36 31'-4 1/8"	ad16		15-10
6	1	L 8" x 4" x 1/2"	A36 3'-10 1/8"	af16		15-10
7	1	L 8" x 4" x 1/2"	A36 3'-8 1/8"	ag16		15-10
8	1	FB 1 1/4" x 5 1/2"	A36 15'-8 3/8"	fa17		16-10
9	1	FB 1 1/4" x 5 1/2"	A36 15'-7 1/8"	fb17		16-10
10	1	FB 1 1/4" x 5 1/2"	A36 15'-7 3/8"	fc17		16-10
11	1	FB 1 1/4" x 5 1/2"	A36 15'-7 1/8"	fd17		16-10
12	1	L 6" x 4" x 1/2"	A36 3'-8 3/8"	aa20	TRIM 6" LEG DOWN TO 5"	15-10
13	1	L 4" x 4" x 1/2"	A36 3'-7 1/8"	ab20		15-10
14	1	R 1/2" x 8 1/8"	A36 3'-7 1/8"	pa20	SHAPE CUT	19-
15	1	L 6" x 4" x 1/2"	A36 3'-10 1/8"	aa21	TRIM 6" LEG DOWN TO 5"	15-10
16	1	L 4" x 4" x 1/2"	A36 3'-9 1/8"	ab21		15-10
17	1	R 1/2" x 8 1/8"	A36 3'-10 1/8"	pa21	SHAPE CUT	19-
18	1	R 1/2" x 10 1/4"	A36 3'-9 1/8"	pa22	SLIP-NOT GRIP PLATE/SHAPE CUT	
19	1	R 1/2" x 2"	A36 3'-10 1/8"	pb22	SLIP-NOT GRIP PLATE/SHAPE CUT	
20	1	R 1/2" x 8 1/4"	A36 0'-10 1/8"	pc22		19-
21	1	R 1/2" x 4"	A36 0'-8 1/8"	pd22		19-
22	1	R 1/2" x 2"	A36 0'-8 1/8"	pf22		19-
23	1	L 6" x 4" x 1/2"	A36 9'-2 1/8"	aa25	TRIM 6" LEG DOWN TO 5"	15-10
24	1	L 4" x 4" x 1/2"	A36 9'-1 1/8"	ab25		15-10
25	1	R 1/2" x 10 7/8"	A36 9'-0 1/8"	pa25	SHAPE CUT	19-
26	1	L 6" x 4" x 1/2"	A36 9'-2 1/8"	aa26	TRIM 6" LEG DOWN TO 5"	15-10
27	1	L 4" x 4" x 1/2"	A36 9'-1 1/8"	ab26		15-10
28	1	R 1/2" x 10 3/4"	A36 9'-1 1/8"	pa26	SHAPE CUT	19-
29	1	R 1/2" x 10 3/4"	A36 9'-2 1/8"	pa27	SLIP-NOT GRIP PLATE/SHAPE CUT	
30	1	R 1/2" x 2"	A36 9'-1 1/8"	pb27	SLIP-NOT GRIP PLATE/SHAPE CUT	
31	1	R 1/2" x 8 5/8"	A36 0'-10 1/8"	pc27		19-
32	1	R 1/2" x 4"	A36 0'-8 1/8"	pd27		19-
33	1	R 1/2" x 2"	A36 0'-8 1/8"	pf27		19-
34	9	L 4" x 4" x 1/2"	A36 1'-1"	aa28	SHIPPING DEVICE	15-10
35	1	MI 3/8" PREFORMED FABRIC x 34 1/8"	44'-4 1/8"	na28	3-PLY/SEE NOTE NO. 7	
36	2	MI 1/4" PREFORMED FABRIC x 1'	0'-7"	nb28	DRIP BEAD	
37	5	R 1/2" x 8"	A36 1'-8 1/2"	pa28		19-
38	5	R 1/2" x 6"	A36 1'-8 1/2"	pb28	SHAPE CUT	19-
39	5	R 1/2" x 8"	A36 0'-10"	pc28		19-
40	5	R 1/2" x 6"	A36 0'-10"	pd28	SHAPE CUT	19-
41	52	FB 5/16" x 3"	A36 0'-3"	ha		16-
42	18	HB 3/4" x 3 1/2"	A325 HDG	hb	SHIPPING HARDWARE	23-1
43	128	HB 3/8" x 2 1/2"	A325 HDG	hc		23-1
44	15	MB 3/4" x 2" SOKT CTSK	F835 HDG	hd		25-
45	15	HN 3/4" HVY	A563DH HDG	hf		25-
46	94	FW 3/4"	F436 HDG	hq		27-
47	146	MI 3/8" FERRULE LOOP INSERT	ZP	hh	DAYTON/RICHMOND F-42	35-
48	44	WS 3/4" x 10 3/8"	A108	wa		29-
49	44	WS 3/4" x 10 3/8"	A108	wb	BEND @ 30°	29-
50	16	WS 3/4" x 7 3/8"	A108	wc		29-
51	4	MI 1/2" x 2 1/2" BUTYL RUBBER TAPE	8 YD. ROLL	xa	MCMASTER CARR #76385A16	
52	1	MI NEVER-SEIZE GREASE		xb		
53	4	HB 1 1/2" x 1 1/2"	A325 HDG	xc		23-
54	4	HN 1 1/2" HVY	A563DH HDG	xd		25-
55	8	FW 1 1/2"	F436 HDG	xf		27-
56	80	PLATE WASHERS		28B	HDG	
57	80	FB 3/8" x 3"	A36 0'-3"	28B		16-
58	45	RB 1" CONT. THRD.	A36 0'-6 1/2"	28C	40 / HDG	18-
59	85	HN 1" HVY	A563DH HDG	28D	80	25-
60	20	HB 3/4" x 2 1/4"	A325 HDG	28F	18	23-1

△	GENERAL REVISION PER APPROVAL.	1/11/02	J
REV.	DESCRIPTION	DATE	BY

ANY AND ALL BACKCHARGES WILL BE REJECTED UNLESS WRITTEN CONSENT IS GIVEN BY LEWIS ENGINEERING COMPANY PRIOR TO ANY WORK PERFORMED FOR OUR ACCOUNT. SUCH REJECTION MEANS THAT INVOICES WILL NOT BE HONORED OR DEDUCTIONS FROM PAYMENT WILL BE CHARGED BACK

**LEWIS ENGINEERING COMPANY**  
 4201 NOREX DRIVE - CHASKA, MINNESOTA 55318 - (952) 368-3000

PROJECT — ROYALTON / RTE. NO. TH 1, CL 1 BRIDGE NO. 3  
 STATE PROJECT — AC BRZ 1444(22)  
 FEDERAL PROJECT —  
 CUSTOMER — BECK & BELLUCCI, INC.  
 LOCATION — WINDSOR COUNTY, VT  
 DESCRIPTION — BILL OF MATERIAL & GENERAL NOTES  
 ABUTMENT NO. 1

W.P. chk'd  
 Drawn By JMB  
 Chk'd. By TSF  
 Date: 12/20/01

LE.C. 30 OF 30    SHEET NO. 15 OF 15    Job. No. : 2034.1042

RECEIVED  
 CHK'D BY: LJA/AS OK'D BY: \_\_\_\_\_  
 JAN 21 2002  
 RESUBMIT APPROVED \_\_\_\_\_  
 BY: CPW DATE: 1/24/02