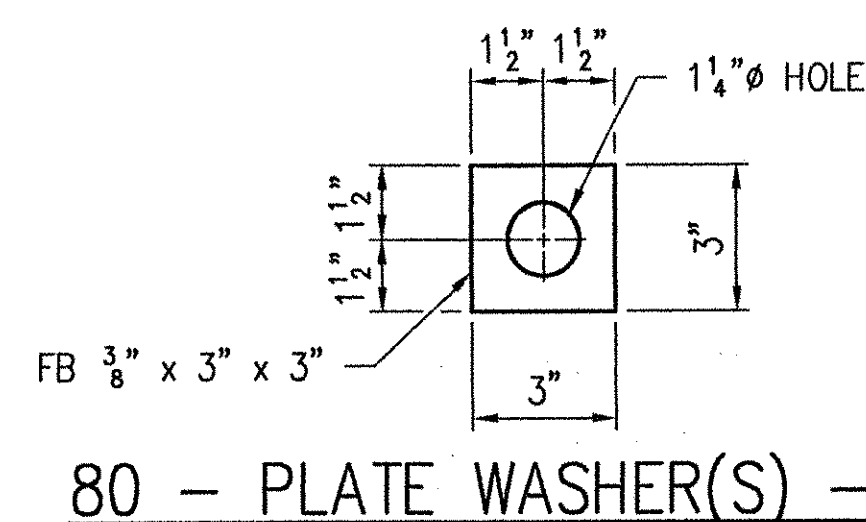
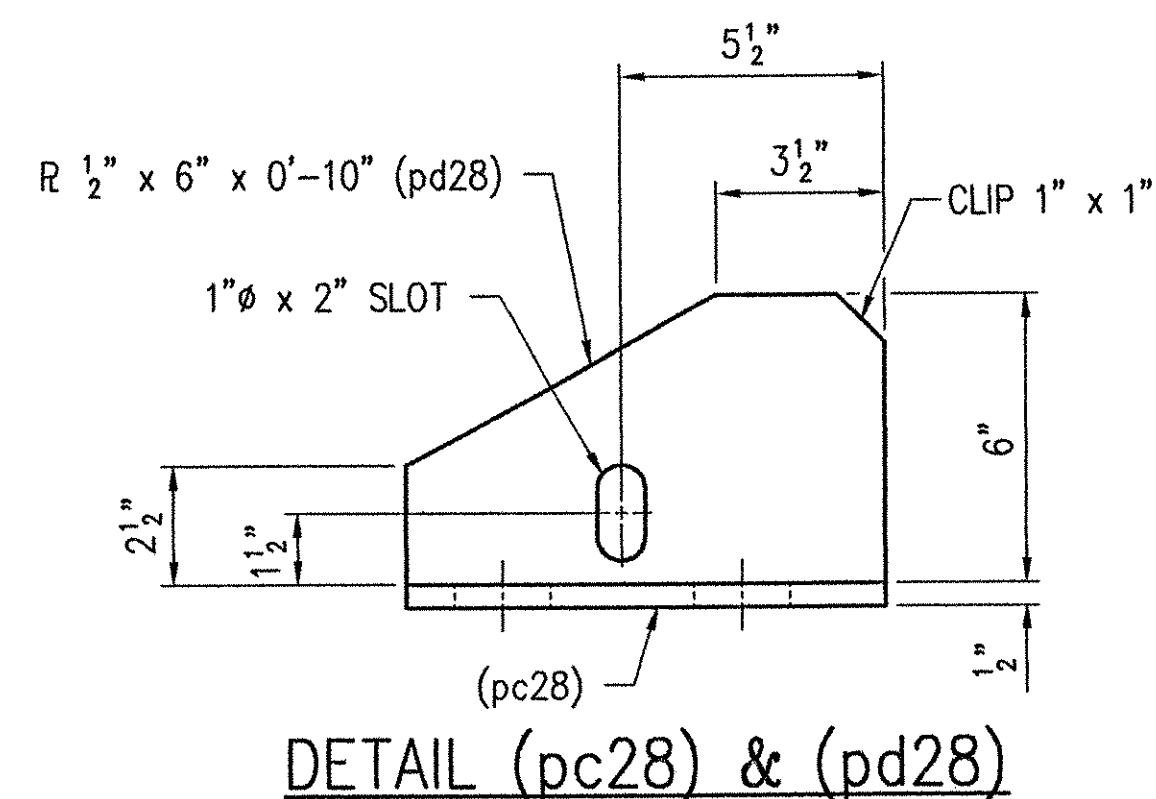
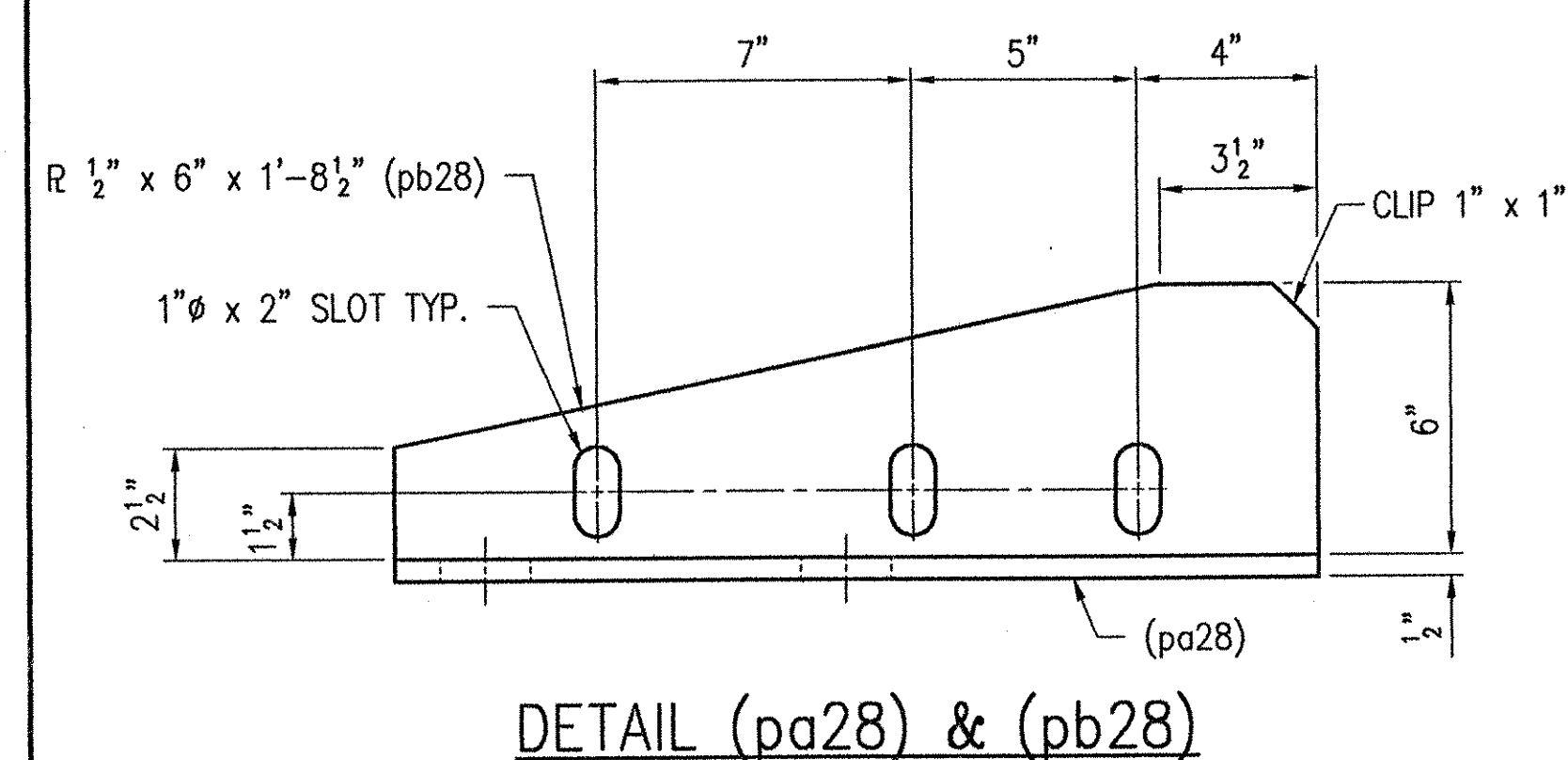
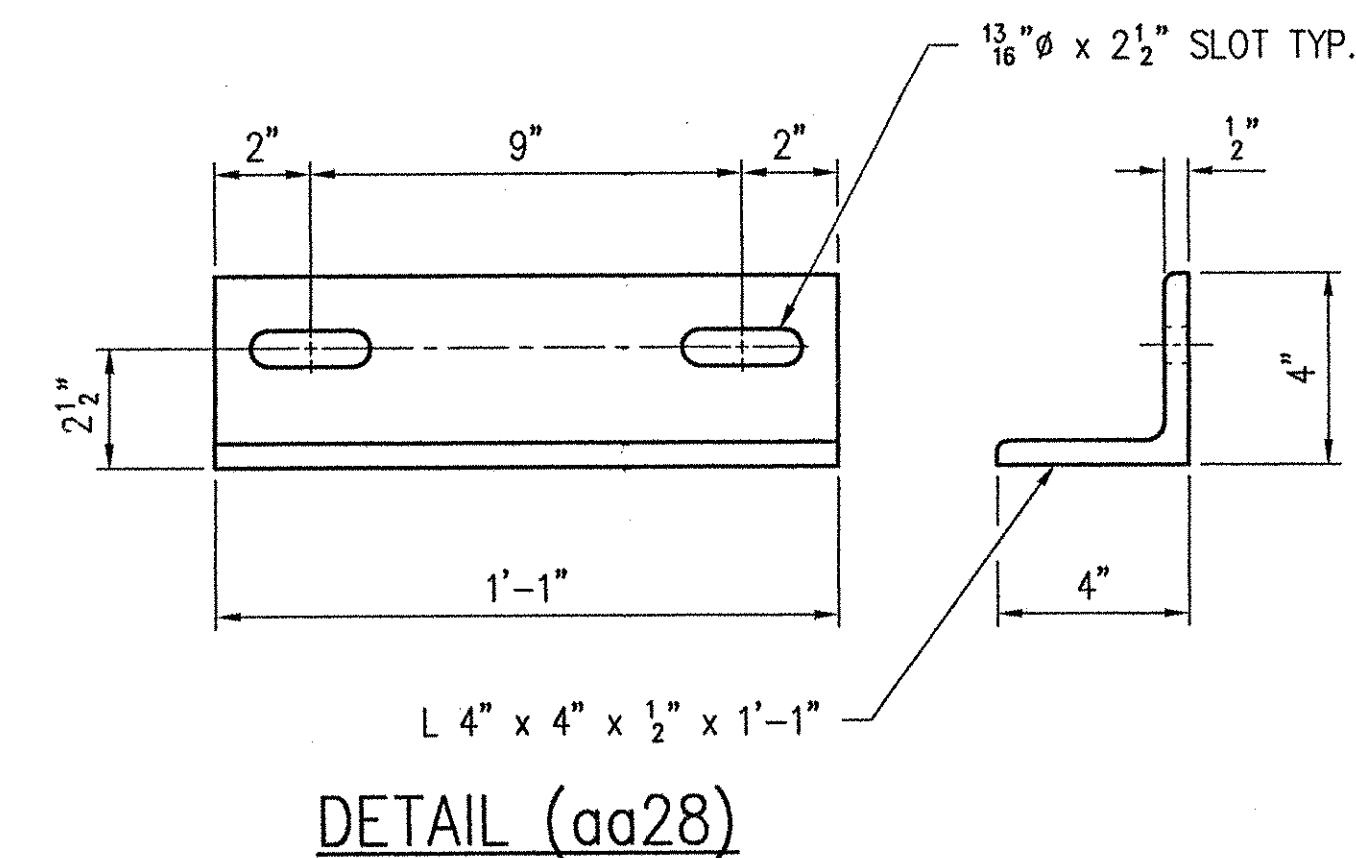
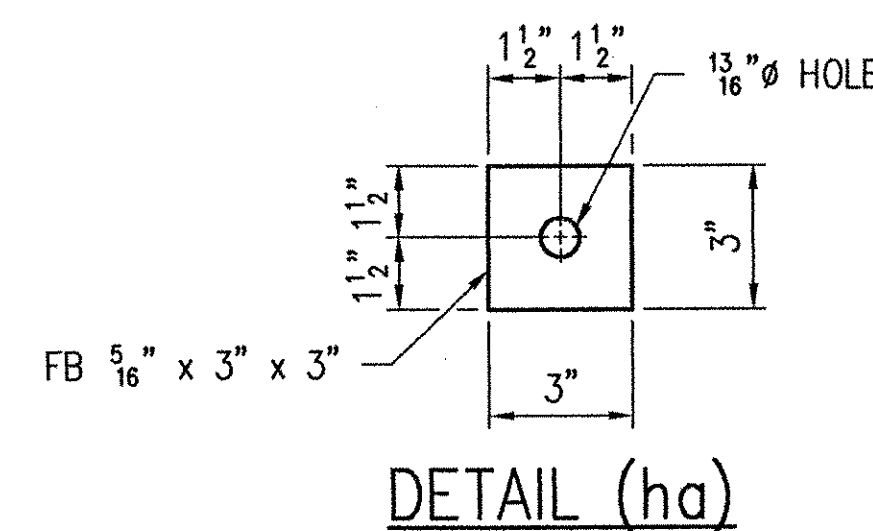
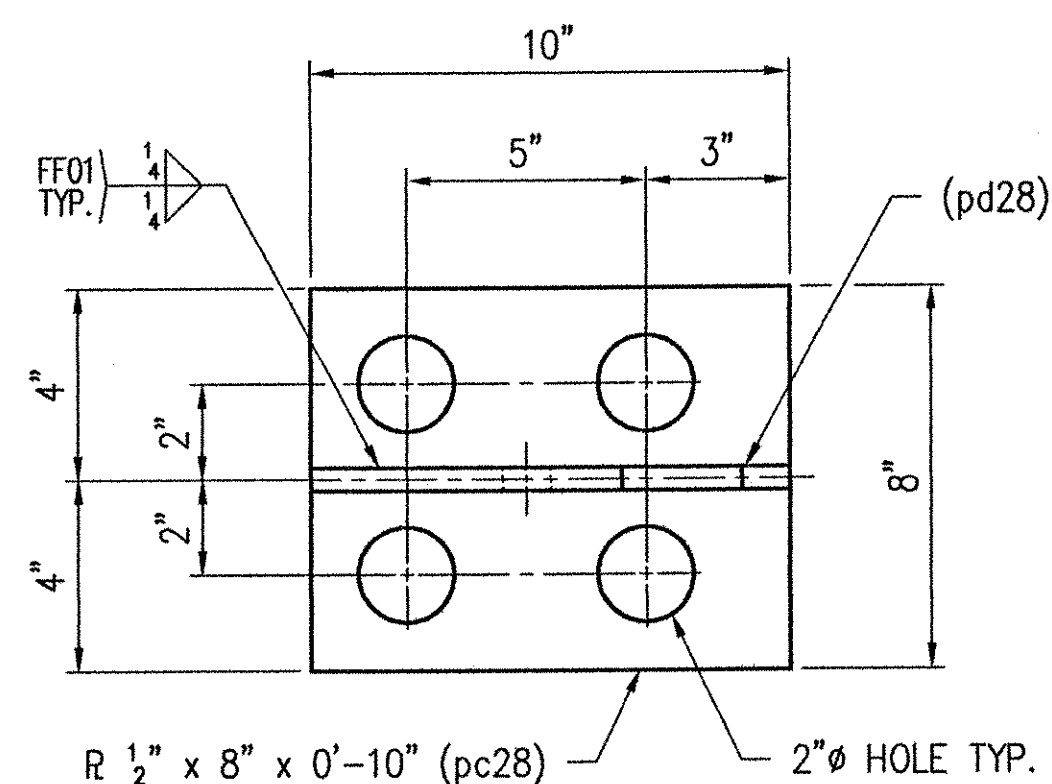
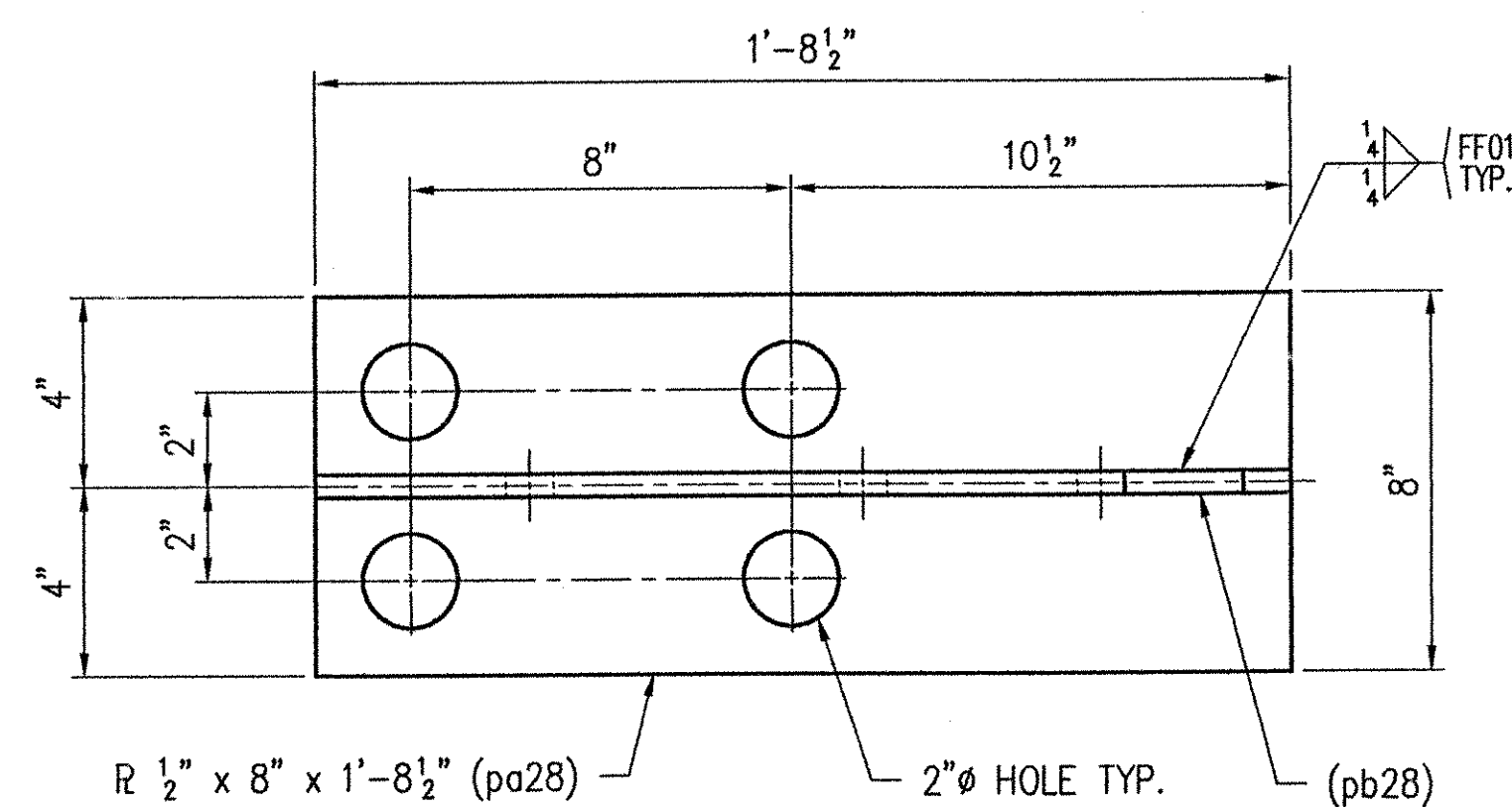


1 - SUB-ASSEMBLY - 28A

SHOP NOTE:  
SEE SHEET NO. 15 FOR  
FOLDED TROUGH END DETAILS.

SHOP NOTE:  
A 1/4" x 1" x 7" STRIP OF PREFORMED  
FABRIC (nb28) SHALL BE CEMENTED TO THE  
BOTTOM OF THE FABRIC TROUGH. USE AN  
ADHESIVE APPROVED BY THE MANUFACTURER.  
THIS WILL SERVE AS A DRIP BEAD.



RECEIVED  
OK'D BY: [Signature] OK'D BY: [Signature]  
JAN 21 2002  
RESUBMIT APPROVED [Signature]  
BY: [Signature] DATE: 1/24/02

SEE SHEET NO. 30 FOR GENERAL NOTES.

REV.	DESCRIPTION	DATE	INT.
1	GENERAL REVISION PER APPROVAL.	1/11/02	JME

ANY AND ALL BACKCHARGES WILL BE REJECTED UNLESS WRITTEN CONSENT IS GIVEN BY LEWIS ENGINEERING COMPANY PRIOR TO ANY WORK PERFORMED FOR OUR ACCOUNT. SUCH REJECTION MEANS THAT INVOICES WILL NOT BE HONORED OR DEDUCTIONS FROM PAYMENT WILL BE CHARGED BACK.

**LEWIS ENGINEERING COMPANY**  
4201 NOREX DRIVE - CHASKA, MINNESOTA 55318 - (952) 368-3000

SHOP	
APPROVAL	
DIST.	
CUST.	
FOR DATE	
PRINTS ISSUED	

PROJECT - ROYALTON / RTE. NO. TH 1, CL 1 BRIDGE NO. 3  
STATE PROJECT - AC BRZ 1444(22)  
FEDERAL PROJECT -  
CUSTOMER - BECK & BELLUCCI, INC.  
LOCATION - WINDSOR COUNTY, VT  
DESCRIPTION - EXPANSION JOINT DETAILS  
ABUTMENT NO. 1

Orig.  
W.P. chk'd  
Drawn By JMB  
Chk'd. By TSF  
Date: 12/20/01