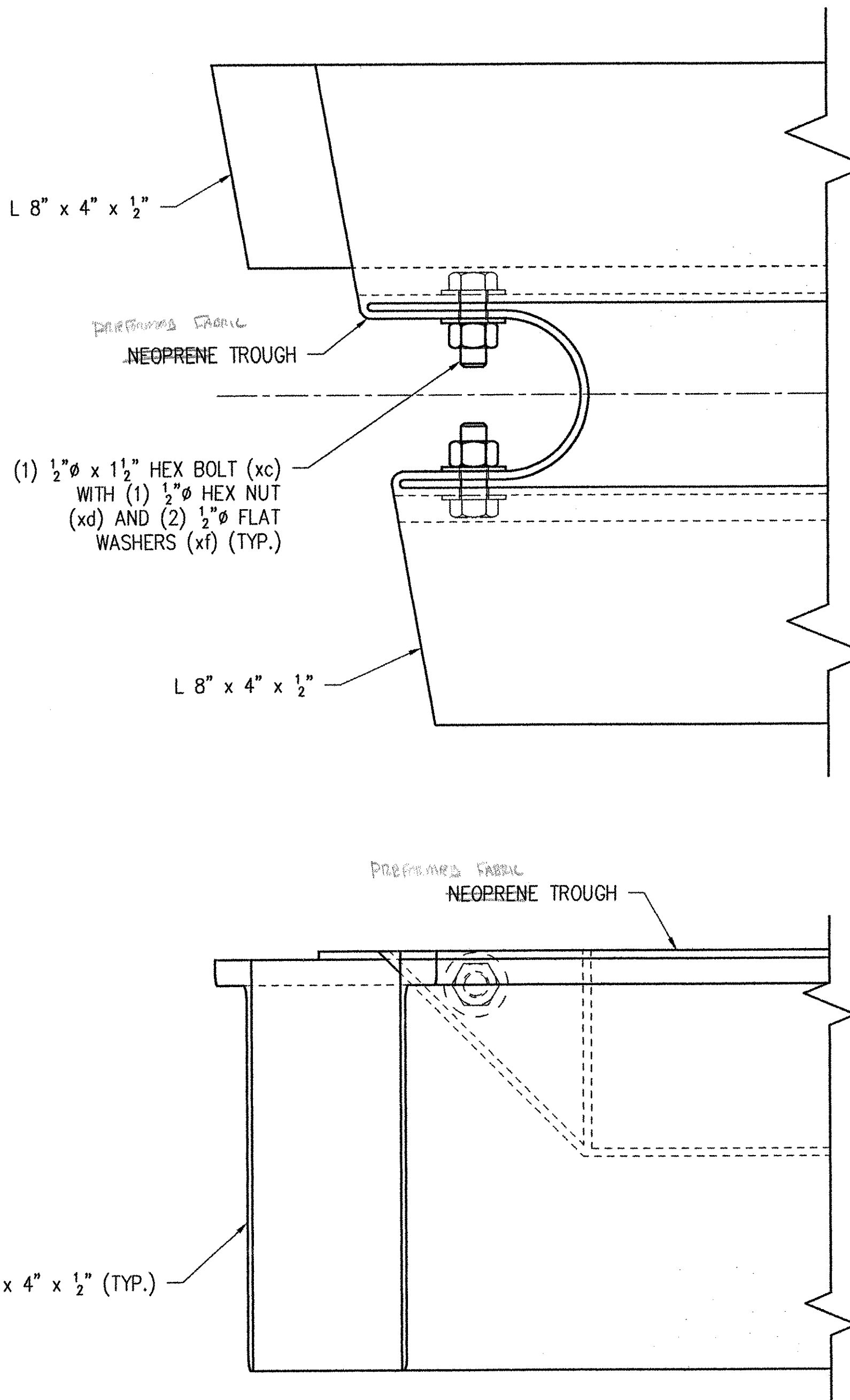


GENERAL NOTES

- 1.) ALL MATERIALS AND CONSTRUCTION SHALL CONFORM TO STATE OF VERMONT, AGENCY OF TRANSPORTATION STANDARD SPECIFICATIONS FOR CONSTRUCTION, DATED 1990, AND ITS LATEST REVISIONS, THE AASHTO STANDARD SPECIFICATIONS FOR HIGHWAY BRIDGES, DATED 1996, AND ITS LATEST REVISIONS, AND THE SPECIAL PROVISIONS.
- 2.) STEEL SHALL CONFORM TO ASTM A709 GRADE 36 (AASHTO M270 GRADE 36).
- 3.) WELDING SHALL MEET THE REQUIREMENTS OF THE ANSI/AASHTO/AWS D1.5 BRIDGE WELDING CODE AS MODIFIED BY STANDARD SPECIFICATIONS.
- 4.) FOR STUD REPAIR USE FF-STUD-REP-01 OR SM-STUD-REP-01.
- 5.) BOLTS SHALL BE HIGH STRENGTH AND CONFORM TO ASTM A325 (AASHTO M164). ALL FIELD HARDWARE IS TO BE GALVANIZED PER ASTM A153 (AASHTO M232). ALL SHOP HARDWARE IS TO BE GALVANIZED PER ASTM B695 (AASHTO M298 CLASS 50).
- 6.) STEEL SHALL BE GALVANIZED PER ASTM A123 (AASHTO M111).
- 7.) PREFORMED FABRIC TROUGH SHALL CONFORM TO STATE OF VERMONT, AGENCY OF TRANSPORTATION STANDARD SPECIFICATIONS FOR CONSTRUCTION, DATED 1990, SUB-SECTION 707.07.
- 8.) BUTYL RUBBER TAPE SHALL CONFORM TO AASHTO M198 TYPE II.
- 9.) SHOP INSPECTION TO BE DONE BY VAOT.
- 10.) PRIOR TO GALVANIZING, ALL CORNERS AND EDGES OF STEEL PLATES SHALL BE GROUND TO $\frac{1}{16}$ " RADIUS.
- 11.) THE JOINT SHALL BE SHOP ASSEMBLED AND SHIPPED AS ONE UNIT.
- 12.) SEAL WELD ALL ACCESSABLE JOINTS PRIOR TO GALVANIZING.



FOLDED TROUGH END DETAIL
(TYPICAL @ BOTH ENDS OF TROUGH)

SHOP NOTE:
FOLD NEOPRENE TROUGH AS SHOWN.
DRILL $\frac{9}{16}$ " HOLES THRU AND FASTEN AS SHOWN WITH $\frac{1}{2}$ " HARDWARE.

RECEIVED
CND BY WBS OK'D BY _____
JAN 11 2002
RESUBMIT BY CPW APPROVED Ms. Noh DATE 1/11/02

LINE NO.	REV.	DESCRIPTION	LENGTH	MK	REMARKS	PART NO
1		EXPANSION JOINT	44'-3 5/16"	1A	HDG	
2	1	L 8" x 4" x 1/2"	9'-0 3/4"	A36	aa1	15-10C
3	1	L 8" x 4" x 1/2"	9'-0 3/4"	A36	ab1	15-10C
4	1	L 8" x 4" x 1/2"	31'-7 1/16"	A36	ac1	15-10C
5	1	L 8" x 4" x 1/2"	31'-9"	A36	ad1	15-10C
6	1	L 8" x 4" x 1/2"	3'-6 3/8"	A36	af1	15-10C
7	1	L 8" x 4" x 1/2"	3'-7 1/4"	A36	ag1	15-10C
8	1	FB 1 1/4" x 5 1/2"	15'-10 1/16"	A36	fa2	16-16C
9	1	FB 1 1/4" x 5 1/2"	15'-9 3/4"	A36	fb2	16-16C
10	1	FB 1 1/4" x 5 1/2"	15'-9 3/8"	A36	fc2	16-16C
11	1	FB 1 1/4" x 5 1/2"	15'-11 1/16"	A36	fd2	16-16C
12	1	L 6" x 4" x 1/2"	3'-8 1/8"	A36	aa5	TRIM 6" LEG DOWN TO 5" 15-8C
13	1	L 4" x 4" x 1/2"	3'-7 5/8"	A36	ab5	15-6C
14	1	R 1/2" x 8 5/16"	3'-7 7/8"	A36	pa5	SHAPE CUT 19-1C
15	1	L 6" x 4" x 1/2"	3'-6 3/8"	A36	aa6	TRIM 6" LEG DOWN TO 5" 15-8C
16	1	L 4" x 4" x 1/2"	3'-5 1/16"	A36	ab6	15-6C
17	1	R 1/2" x 8 5/16"	3'-6"	A36	pa6	SHAPE CUT 19-1C
18	1	R 1/2" x 10 3/4"	3'-7 1/16"	A36	pa7	SLIP-NOT GRIP PLATE/SHAPE CUT
19	1	R 1/2" x 2"	3'-8"	A36	pb7	SLIP-NOT GRIP PLATE/SHAPE CUT
20	1	R 1/2" x 8 1/4"	0'-10 15/16"	A36	pc7	19-1C
21	1	R 1/2" x 4 1/16"	0'-8 3/16"	A36	pd7	19-1C
22	1	R 1/2" x 2 1/16"	0'-8 1/4"	A36	pf7	19-1C
23	1	L 6" x 4" x 1/2"	9'-0 3/4"	A36	aa10	TRIM 6" LEG DOWN TO 5" 15-8C
24	1	L 4" x 4" x 1/2"	9'-0 5/16"	A36	ab10	15-6C
25	1	R 1/2" x 10 1/2"	8'-11 1/16"	A36	pa10	SHAPE CUT 19-1C
26	1	L 6" x 4" x 1/2"	9'-1 1/4"	A36	aa11	TRIM 6" LEG DOWN TO 5" 15-8C
27	1	L 4" x 4" x 1/2"	9'-0 3/8"	A36	ab11	15-6C
28	1	R 1/2" x 10 1/2"	9'-1"	A36	pa11	SHAPE CUT 19-1C
29	1	R 1/2" x 10 3/4"	9'-1 1/2"	A36	pa12	SLIP-NOT GRIP PLATE/SHAPE CUT
30	1	R 1/2" x 2"	9'-0 15/16"	A36	pb12	SLIP-NOT GRIP PLATE/SHAPE CUT
31	1	R 1/2" x 8 1/4"	0'-10 15/16"	A36	pc12	19-1C
32	1	R 1/2" x 4 1/16"	0'-8 3/16"	A36	pd12	19-1C
33	1	R 1/2" x 2 1/16"	0'-8 1/4"	A36	pf12	19-1C
34	9	L 4" x 4" x 1/2"	1'-1"	A36	aa13	SHIPPING DEVICE 15-6C
35	1	MI 3/8" PREFORMED FABRIC x 34 5/16"	44'-4 5/16"	na13	3-PLY/SEE NOTE NO. 7	
36	2	MI 1/4" PREFORMED FABRIC x 1"	0'-7"	nb13	DRIP BEAD	
37	5	R 1/2" x 8"	1'-8 1/2"	A36	pa13	19-1C
38	5	R 1/2" x 6"	1'-8 1/2"	A36	pb13	SHAPE CUT 19-1C
39	5	R 1/2" x 8"	0'-10"	A36	pc13	19-1C
40	5	R 1/2" x 6"	0'-10"	A36	pd13	SHAPE CUT 19-1C
41	52	FB 5/8" x 3"	0'-3"	A36	ha	16-5
42	18	HB 3/4" x 3 1/2"	A325 HDG	hb	SHIPPING HARDWARE	23-13
43	128	HB 3/4" x 2 1/4"	A325 HDG	hc		23-11
44	15	MB 1/4" x 2" SOKT CTSK	F835 HDG	hd		
45	15	HN 1/2" HVY	A563DH HDG	hf		25-
46	94	FW 1/2"	F436 HDG	hg		27-
47	146	MI 1/4" FERRULE LOOP INSERT	ZP	hh	DAYTON/RICHMOND F-42	35-
48	44	WS 3/4" x 10 3/16"	A108	wa		29-1
49	44	WS 3/4" x 10 3/16"	A108	wb	BEND @ 30'	29-1
50	16	WS 3/4" x 7 3/16"	A108	wc		29-1
51	4	MI 1/8" x 2 1/2" BUTYL RUBBER TAPE	8 YD. ROLL	xa	MCMASTER CARR #76385A16	
52	1	MI NEVER-SEIZE GREASE		xb		
53	4	HB 1/2" x 1 1/2"	A325 HDG	xc		23-
54	4	HN 1/2" HVY	A563DH HDG	xd		25-
55	8	FW 1/2"	F436 HDG	xf		27-
56	80	PLATE WASHERS		13B	HDG	
57	80	FB 1/8" x 3"	A36	0'-3"	13B	16-7
58	45	RB 1" CONT. THRD.	A36	0'-6 1/2"	13C	40 / HDG 18-2
59	85	HN 1" HVY	A563DH HDG	13D	80	25-1
60	20	HB 3/4" x 2 1/4"	A325 HDG	13F	18	23-11

GENERAL REVISION PER APPROVAL. 1/3/02 JM
REV. DESCRIPTION DATE INT

ANY AND ALL BACKCHARGES WILL BE REJECTED UNLESS WRITTEN CONSENT IS GIVEN BY LEWIS ENGINEERING COMPANY PRIOR TO ANY WORK PERFORMED FOR OUR ACCOUNT. SUCH REJECTION MEANS THAT INVOICES WILL NOT BE HONORED OR DEDUCTIONS FROM PAYMENT WILL BE CHARGED BACK.

LEWIS ENGINEERING COMPANY
4201 NOREX DRIVE - CHASKA, MINNESOTA 55318 - (952) 368-3000

SHOP	PROJECT	ROYALTON / RTE. NO. TH 1, CL 1 BRIDGE NO. 3
	STATE PROJECT	AC BRZ 1444(22)
	FEDERAL PROJECT	
APPROVAL	CUSTOMER	BECK & BELLUCCI, INC.
	LOCATION	WINDSOR COUNTY, VT
DIST.	DESCRIPTION	BILL OF MATERIAL & GENERAL NOTES
		ABUTMENT NO. 2
CUST.		
FOR DATE	L.E.C. 15 OF 30	SHEET NO. 15 OF 15
PRINTS ISSUED		Job. No. : 2034.1042.

Orig
W.P. chk'd
Drawn By JMB
Chk'd. By TSF
Date: 12/5/01