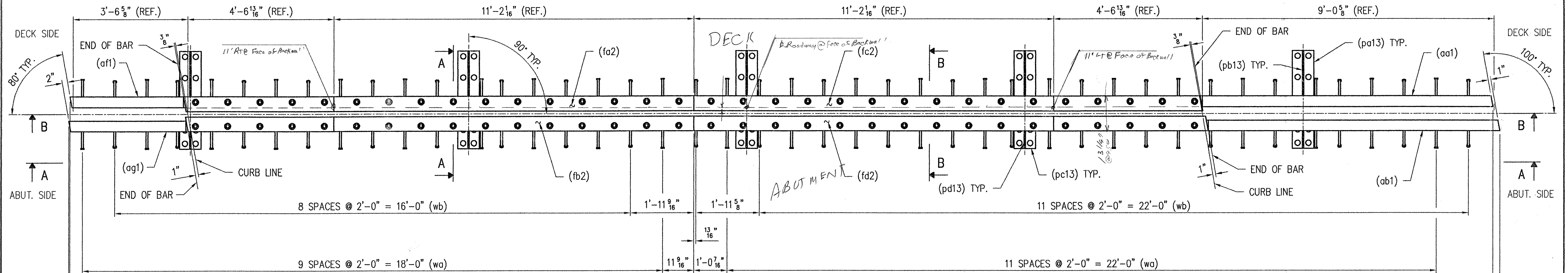


NOTE: SEE SHEET NO. 3 FOR CURB ASSEMBLY ON THIS SIDE.

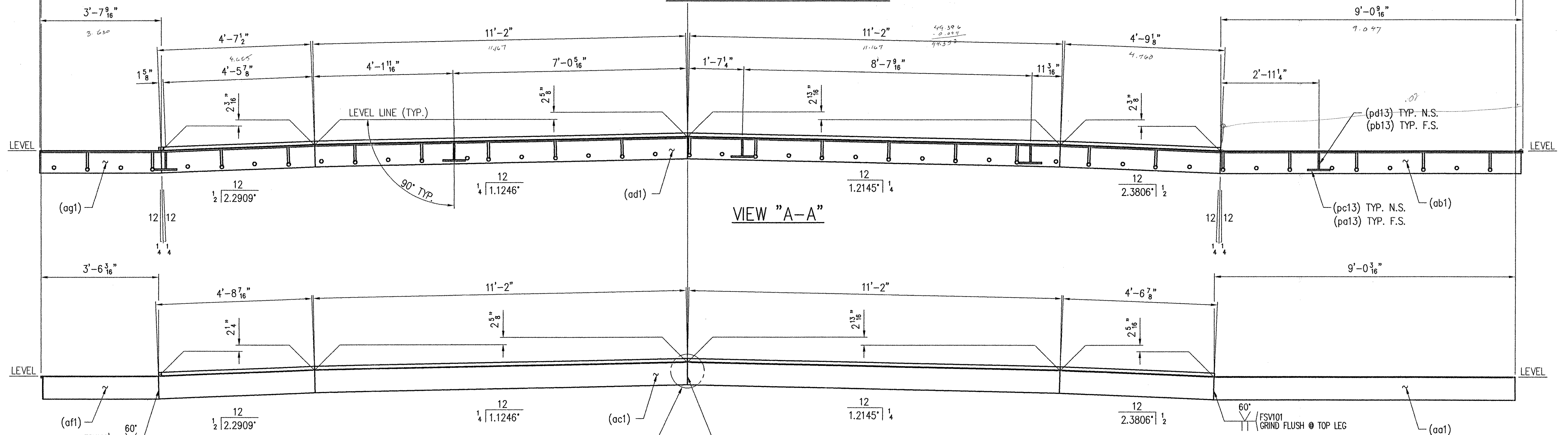
NOTE: SEE SHEET NO. 8 FOR CURB ASSEMBLY ON THIS SIDE.



SHOP NOTE:
ADJUST STUD SPACING AS REQUIRED TO AVOID INTERFERENCE
WITH SUPPORTS AND LOOP FERRULE INSERTS.

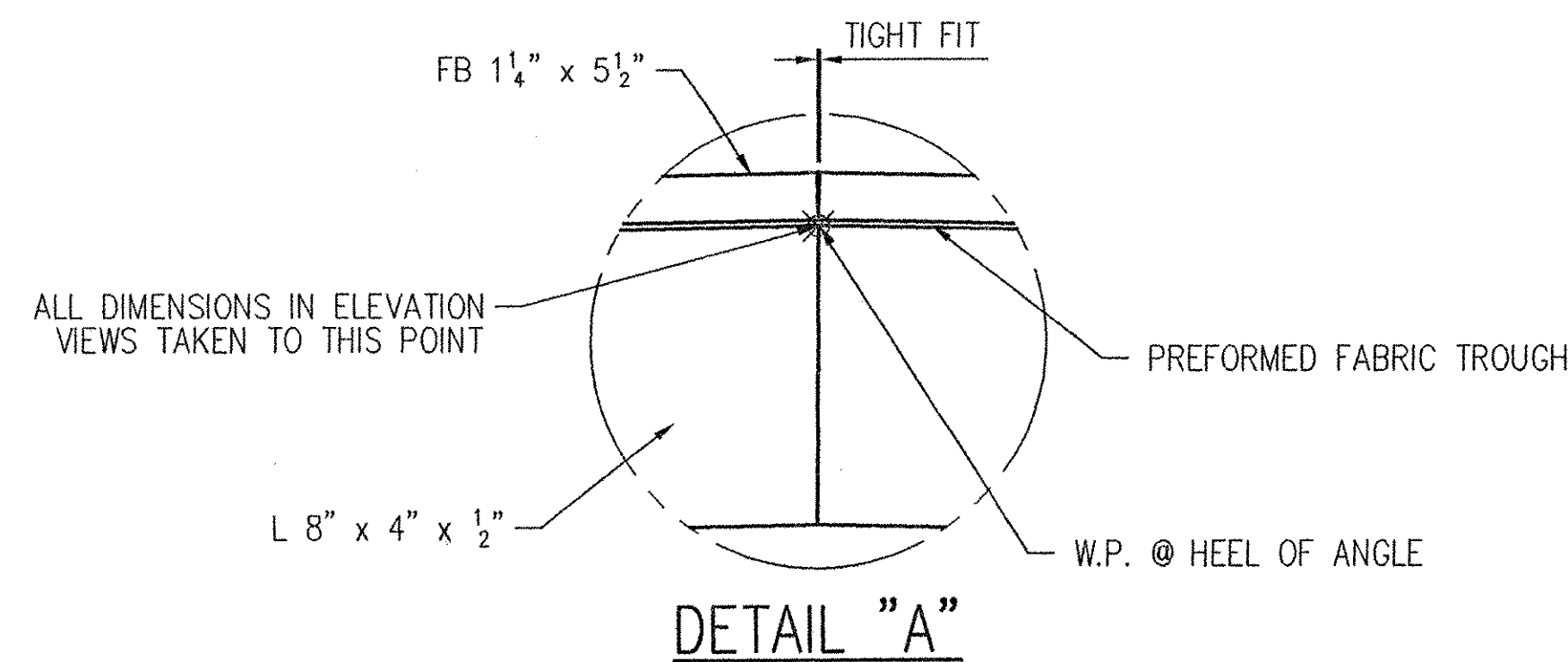
SHOP NOTE:
ADJUST STUD SPACING AS REQUIRED TO AVOID INTERFERENCE
WITH SUPPORTS AND LOOP FERRULE INSERTS.

PLAN VIEW
1 - EXPANSION JOINT - 1A



VIEW "A-A"

VIEW "B-B"



SHOP NOTE:
ALL WELDS SHOWN IN VIEW "B-B"
ARE TYP. IN VIEW "A-A". ALL MITER
CUTS IN VIEW "A-A" ARE ALSO TYP.
IN VIEW "B-B". IN ADDITION, ALL
DIMENSIONS FOR "SUPPORT PLATES"
SHOWN IN VIEW "A-A" ARE TYPICAL
IN VIEW "B-B" ALSO. SEAL ALL
ACCESSIBLE JOINTS FOR GALVANIZING.

RECEIVED
CRD BY: [Signature] OK'D BY: [Signature]
JAN 11 2002
RESUBMIT BY: [Signature] APPROVED DATE: 1/11/02

REV.	DESCRIPTION	DATE	INT.
1	GENERAL REVISION PER APPROVAL.	1/2/02	JMB
ANY AND ALL BACKCHARGES WILL BE REJECTED UNLESS WRITTEN CONSENT IS GIVEN BY LEWIS ENGINEERING COMPANY PRIOR TO ANY WORK PERFORMED FOR OUR ACCOUNT. SUCH REJECTION MEANS THAT INVOICES WILL NOT BE HONORED OR DEDUCTIONS FROM PAYMENT WILL BE CHARGED BACK.			
LEWIS ENGINEERING COMPANY		4201 NOREX DRIVE - CHASKA, MINNESOTA 55318 - (952) 388-3000	
PROJECT	ROYALTON / RTE. NO. TH 1, CL 1 BRIDGE NO. 3		
STATE PROJECT	AC BRZ 1444(22)		
FEDERAL PROJECT	-		
CUSTOMER	BECK & BELLUCCI, INC.		
LOCATION	WINDSOR COUNTY, VT		
DESCRIPTION	EXPANSION JOINT DETAILS ABUTMENT NO. 2		
W.P. chkd	[Signature]		
Drawn By	JMB		
Chkd. By	TSF		
Date:	12/5/01		
L.E.C. 1 OF 30	SHEET NO. 1 OF 15	Job. No. : 2034.1042.1	