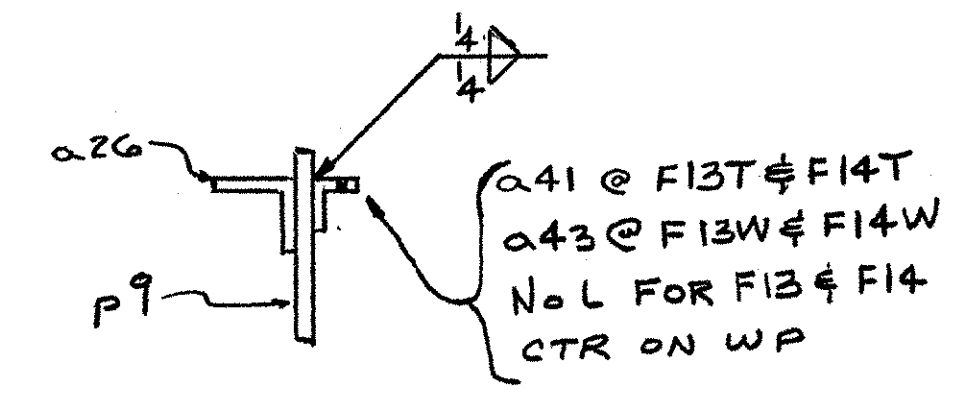
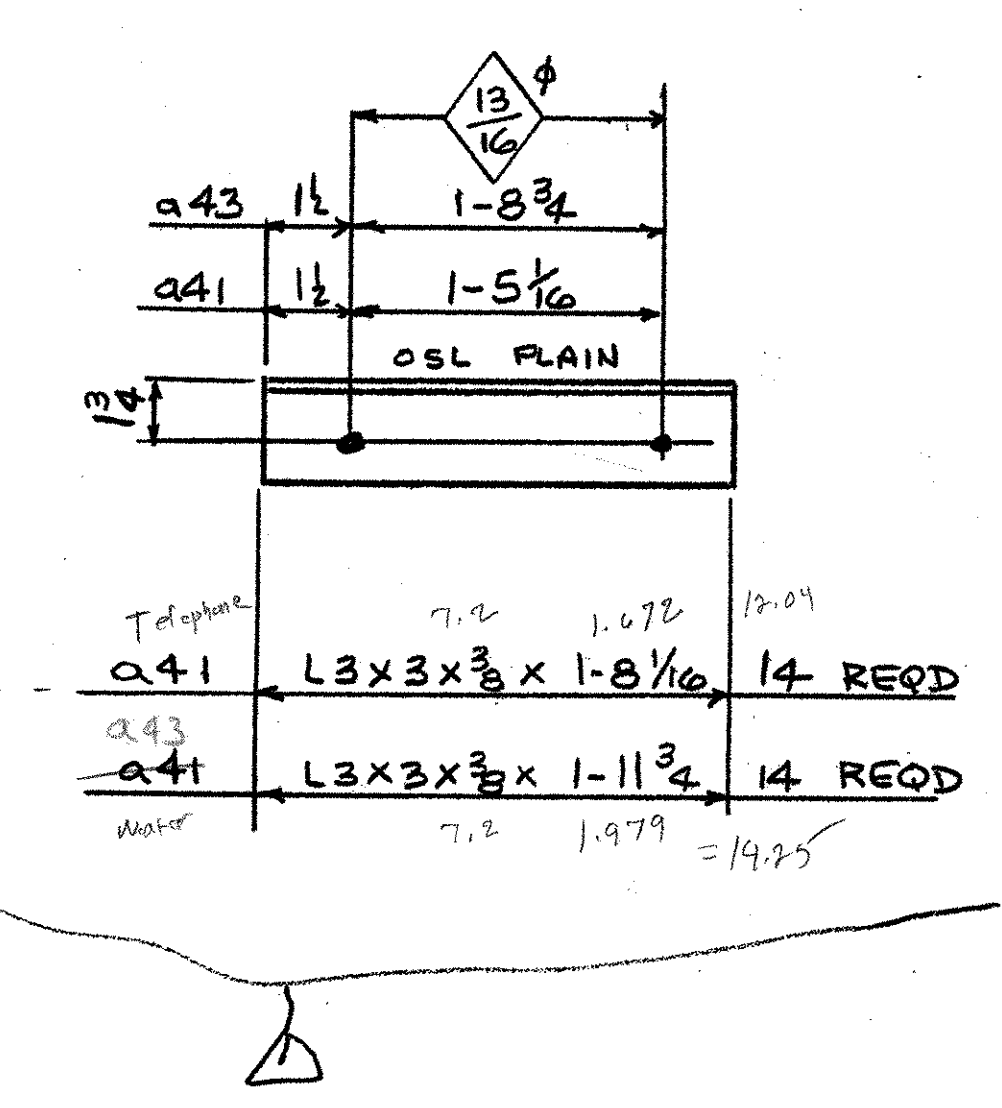


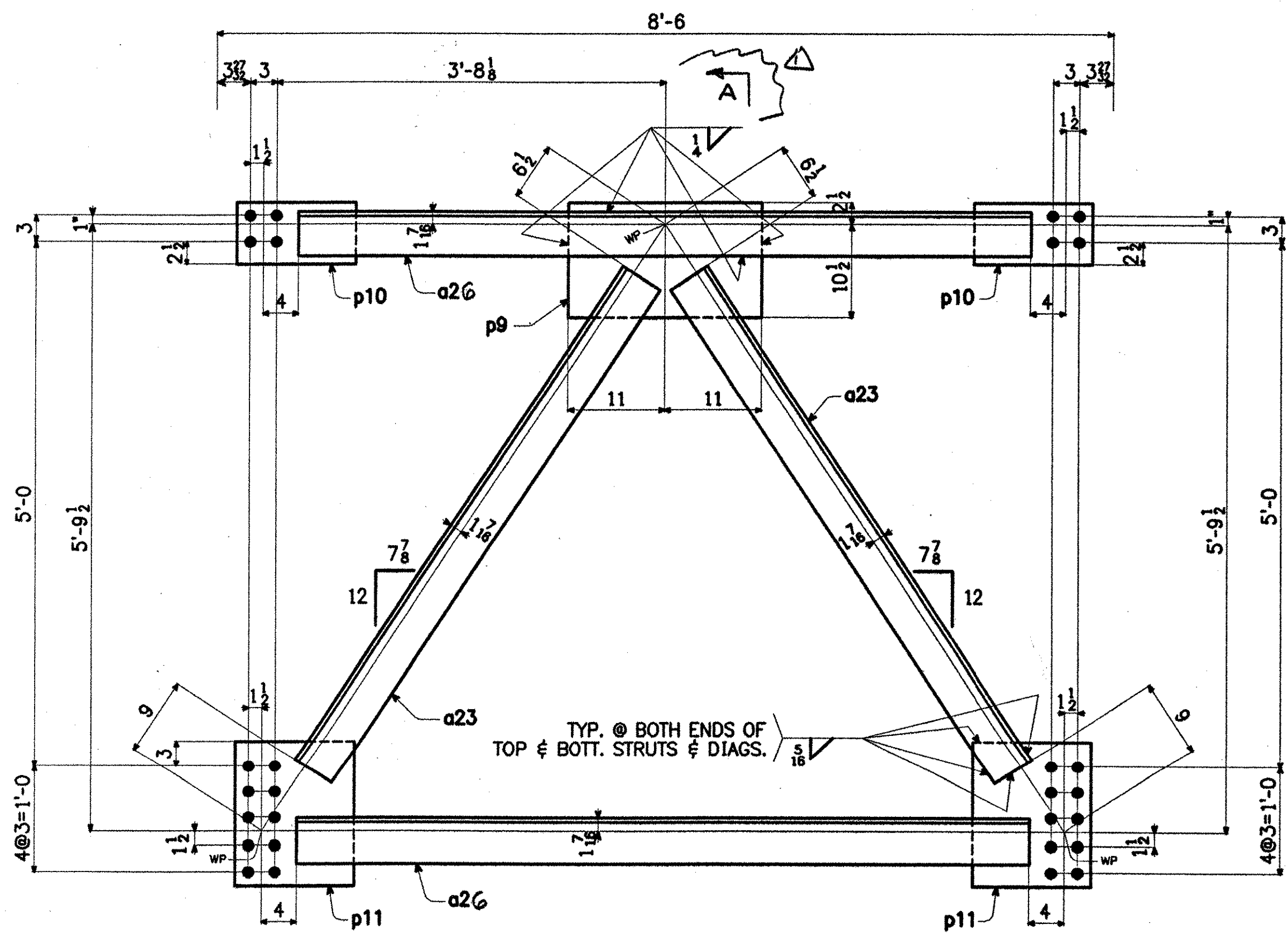
- 24 - INT. CROSSFRAMES - F13
  - 12 - INT CROSSFRAMES - F13 T
  - 12 - INT CROSSFRAMES - F13W
- ICFSTR



SECT A



SHIP MARK	BILL OF MATERIAL				WORK ORDER NO.	DRAWING NO.	REV.
	NO.	MARK	SHAPE	LENGTH	15873	20-6	1
F13	24		CROSSFRAME				12402
F13T	12		CROSSFRAME				6345
F13W	12		CROSSFRAME				6372
	96	a22	L5x5x1/2	4-11 1/16	5/16	3/8	7735
	96	a26	L5x5x1/2	6-11 3/8	1/2	3/8	10805
	48	P9	PL 1/2 x 13	1-0	5/16	3/8	1946
	96	P10	PL 1/2 x 7	1-1 1/2	5/16	3/8	1286
	96	P11	PL 1/2 x 13 1/2	1-4 1/2	5/16	3/8	3032
	12	a41	L3x3x3/8	1-8 1/16	5/16	3/8	144 FOR F13T
	12	a43	L3x3x3/8	1-11 3/4	1/2	3/8	171 FOR F13W
F14	4		CROSSFRAME				2153
F14T	2		CROSSFRAME				1100
F14W	2		CROSSFRAME				1094
	16	a23	L5x5x1/2	5-7 5/8	5/16	3/8	1461
	16	a26	L5x5x1/2	6-11 3/8	1/2	3/8	1801
	8	P9	PL 1/2 x 13	1-10	5/16	3/8	324
	16	P10	PL 1/2 x 7	1-1 1/2	5/16	3/8	214
	16	P11	PL 1/2 x 13 1/2	1-4 1/2	5/16	3/8	505
	2	a41	L3x3x3/8	1-8 1/16	5/16	3/8	24 FOR F14T
	2	a43	L3x3x3/8	1-11 3/4	1/2	3/8	18 FOR F14W
							29446#



- 4 - INT. CROSSFRAMES - F14
  - 2 - INT CROSSFRAMES - F14T
  - 2 - INT CROSSFRAMES - F14W
- ICFSTR

RECEIVED  
NOV 21 2001  
APPROVED As Noted  
DATE 12/3/01

ADDED UTIL SUPPORT 11-15-01 JCM

STEEL: ASTM  A709-36  A709-50  A709-50W  Unless Noted

WELDING ELECTRODE:  E70  See Welding Proc.  None

HOLES:  13/16  15/16  Unless Noted  As Noted  None

PAINT:  None  Galv. After Fab.  As Noted

SPECIAL PAINT:

SPECIAL CLEANING:  Blast Clean SSPC SP10  None

ITEM NO. 506.55 BR. NO. 3 PROJ. NO. BRZ 1444(22)

TITLE: CROSSFRAME DETAILS

APPROVED: 9-5-01  
PRINT DIST. 4-7-01 APPR.

ORIG. 9-5-01 FAB.

5 7-13-01 APP

5 8-24-01 APP

5 11-19-01 APP

11 11-19-01 FAB

FOR APPROVAL

**NE National Eastern Corporation**  
Plainville, Connecticut

JOB: T.H. 1 OVER THE WHITE RIVER  
ROYALTON, VERMONT

CUSTOMER: BECK & BELLUCCI, INC.

DESIGNER: VERMONT AGENCY OF TRANSPORTATION

WORK ORDER NO. 15873 DRAWING NO. 20-6 REV. 1

REVISOR: AV 3/01  
DRAWN: TS 3/01