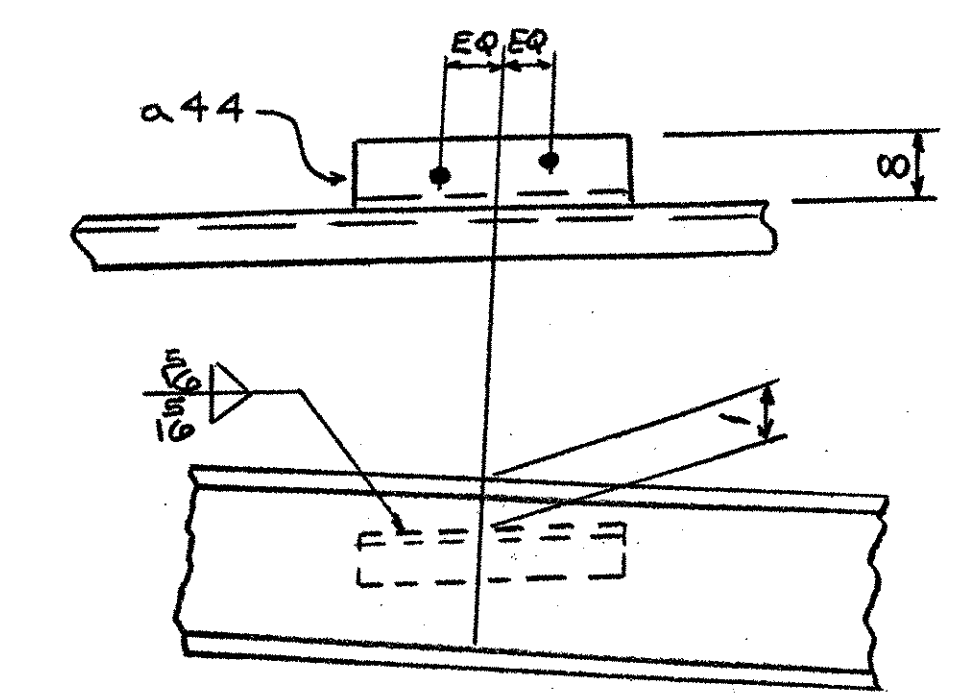


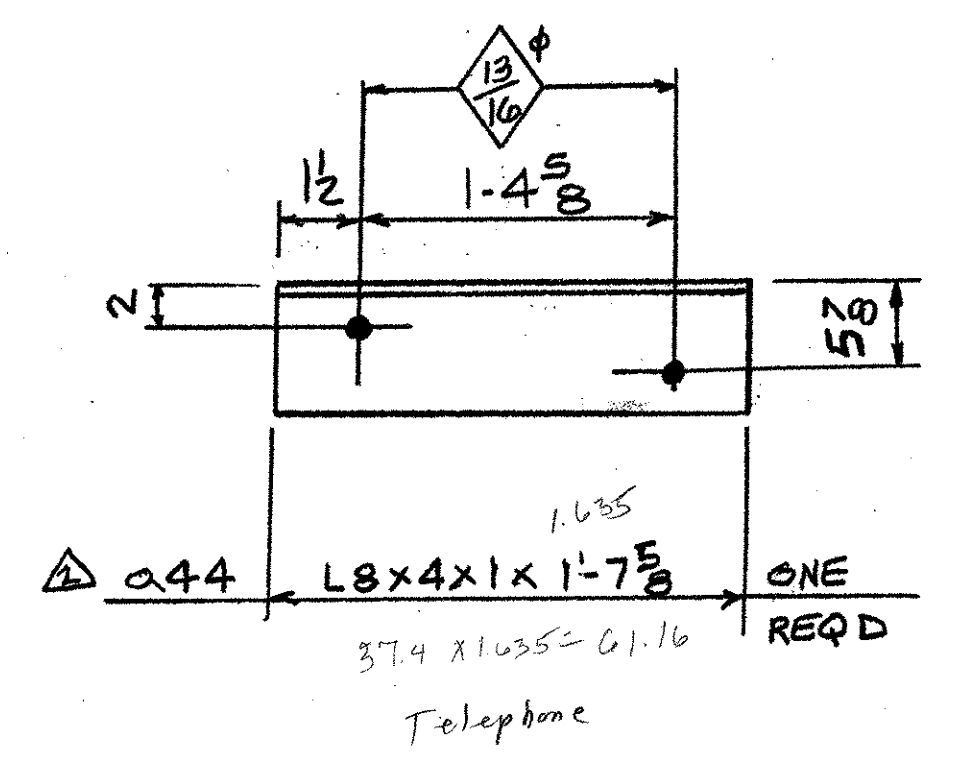
PIER CROSSFRAMES

| MARK | NO. REQ'D | A | B | C | D | E | F |
|----------|-----------|-----|-----|-----|-------|-------|-------|
| PIER F11 | 1 | a19 | a18 | 5/8 | 2 3/8 | 6 3/8 | 6 3/8 |
| PIER F12 | 1 | a25 | a24 | 3/8 | 2 1/2 | 6 3/8 | 6 3/8 |

EDCSKW



PARTIAL DETAIL FOR F12



| SHIP MARK | BILL OF MATERIAL | | | | WORK ORDER NO. | DRAWING NO. | REV. |
|-----------|------------------|------|-----------------|------------|----------------|-------------|-----------|
| | NO. | MARK | SHAPE | LENGTH | 15873 | 20-5 | 2 |
| F11 | 1 | | CROSSFRAME | | | | |
| | 2 | m1 | C15 x 33.9 | 6'-4 3/8 | 54/8 | 5 | 433 |
| | 1 | a18 | L5 x 5 x 1/2 | 5'-10 1/8 | 54/2 | 5 | 95 |
| | 1 | a19 | L5 x 5 x 1/2 | 5'-8 1/8 | 54/2 | 5 | 92 |
| | 1 | p2 | PL 1/2 x 18 | 1'-3 3/4 | 54/7 | 5 | 40 BENT |
| | 1 | p3 | PL 1/2 x 18 | 1'-3 3/4 | 54/7 | 5 | 40 BENT |
| | 1 | p6 | PL 1/2 x 25 1/2 | 1'-3 3/4 | 54/13 | 5 | 57 BENT |
| | 1 | p7 | PL 1/2 x 25 1/2 | 1'-3 3/4 | 54/13 | 5 | 57 BENT |
| | 1 | p8 | PL 1/2 x 14 | 2'-0 | 54/1 | 5 | 48 |
| F12 | 1 | | CROSSFRAME | | | | |
| | 2 | m1 | C15 x 33.9 | 6'-4 3/8 | 54/8 | 5 | 433 |
| | 1 | a24 | L5 x 5 x 1/2 | 5'-10 5/16 | 54/2 | 5 | 92 |
| | 1 | a25 | L5 x 5 x 1/2 | 5'-8 1/8 | 54/2 | 5 | 95 |
| | 1 | p2 | PL 1/2 x 18 | 1'-3 3/4 | 54/7 | 5 | 40 BENT |
| | 1 | p3 | PL 1/2 x 18 | 1'-3 3/4 | 54/7 | 5 | 40 BENT |
| | 1 | p6 | PL 1/2 x 25 1/2 | 1'-3 3/4 | 54/13 | 5 | 57 BENT |
| | 1 | p7 | PL 1/2 x 25 1/2 | 1'-3 3/4 | 54/13 | 5 | 57 BENT |
| | 1 | p8 | PL 1/2 x 14 | 2'-0 | 54/1 | 5 | 48 |
| | 1 | a44 | L8 x 4 x 1 | 1-7 5/8 | 54/1 | 13 | (57) 411B |

STEEL: ASTM A709-36 A709-50 A709-50W Unless Noted

WELDING ELECTRODE: E70 See Welding Proc. None

HOLES: 13/16 15/16 Unless Noted As Noted None

PAINT: None Galv. After Fab. As Noted

SPECIAL PAINT: _____

SPECIAL CLEANING: Blast Clean SSPC SP10 None

ITEM NO. 506.55 BR. NO. 3 PROJ. NO. BRZ 1444(22)

TITLE: CROSSFRAME DETAILS

APPROVED: 9-5-01

PRINT DIST. 4-7-01 APPR. 9-5-01 FAB.

ORIG. 9-5-01 FAB.

5 7-13-01 APP.

5 8-24-01 APP.

5 11-19-01 APP.

11 11-19-01 FAB.

RECEIVED NOV 21 2001

APPROVED BY CPW DATE 12/2/01

NE National Eastern Corporation
Plainville, Connecticut

JOB: T.H. 1 OVER THE WHITE RIVER
ROYALTON, VERMONT

CUSTOMER: BECK & BELLUCCI, INC.

DESIGNER: VERMONT AGENCY OF TRANSPORTATION

WORK ORDER NO. 15873 DRAWING NO. 20-5 REV. 2

ADDED a44 11-14-01 Jcm
REVISED PC.MK. a24 & a25 A.V. 9-20-01

REVISED

OK