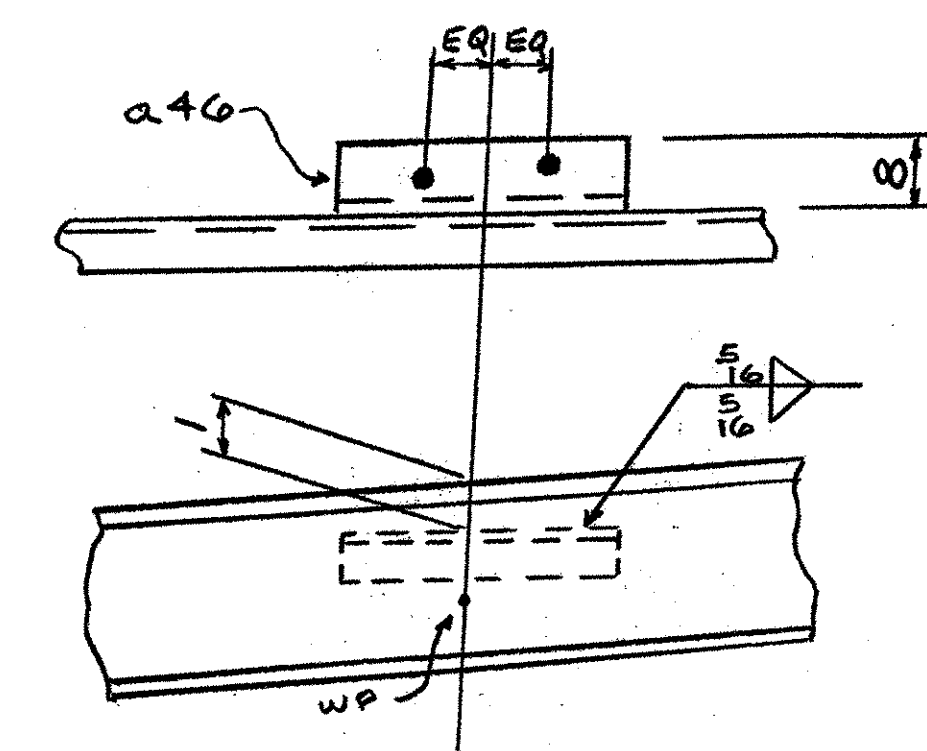


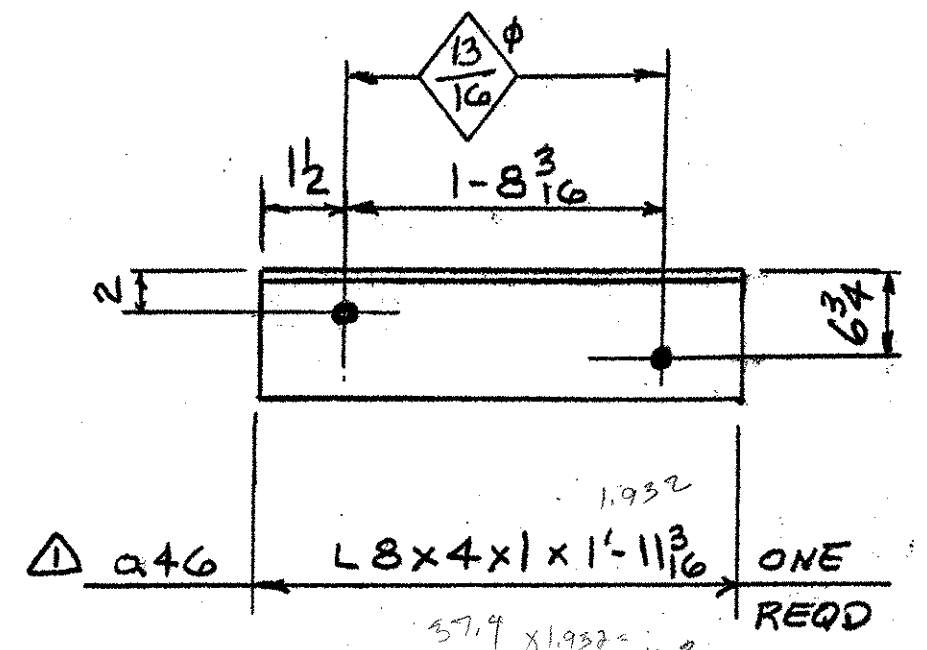
PIER CROSSFRAMES

MARK	NO. REQ'D	(A)	(B)	(C)	(D)	(E)	(F)
PIER F9	1	a16	a17	1/2	3 1/8	6 1/8	6 3/8
PIER F10	1	a21	a20	1/8	1 3/8	6 1/4	6 1/8

EDCSKW



PARTIAL DETAIL FOR F9



SHIP MARK	BILL OF MATERIAL				WORK ORDER NO.	DRAWING NO.	REV.
	NO.	MARK	SHAPE	LENGTH	15873	20-4	A
F9	1		CROSSFRAME				933
	2	m1	C15 x 33.9	6'-4 3/8	54/16	5/16	433
	1	a16	L5 x 5 x 1/2	5'-10 1/8	54/16	5/16	95
	1	a17	L5 x 5 x 1/2	5'-7 3/8	54/16	5/16	91
	1	p2	PL 1/2 x 18	1'-3 3/4	54/16	5/16	40 BENT
	1	p3	PL 1/2 x 18	1'-3 3/4	54/16	5/16	40 BENT
	1	p6	PL 1/2 x 25 1/2	1'-3 3/4	54/16	5/16	57 BENT
	1	p7	PL 1/2 x 25 1/2	1'-3 3/4	54/16	5/16	57 BENT
F10	1	p8	PL 1/2 x 14	2'-0	54/16	5/16	48
	1	a46	L8 x 4 x 1	1-11 3/16	57/16	5/16	72
	1		CROSSFRAME				860
	2	m1	C15 x 33.9	6'-4 3/8	54/16	5/16	433
	1	a20	L5 x 5 x 1/2	5'-8 1/4	54/16	5/16	92
	1	a21	L5 x 5 x 1/2	5'-9 1/4	54/16	5/16	93
	1	p2	PL 1/2 x 18	1'-3 3/4	54/16	5/16	40 BENT
	1	p3	PL 1/2 x 18	1'-3 3/4	54/16	5/16	40 BENT
1	p6	PL 1/2 x 25 1/2	1'-3 3/4	54/16	5/16	57 BENT	
1	p7	PL 1/2 x 25 1/2	1'-3 3/4	54/16	5/16	57 BENT	
1	p8	PL 1/2 x 14	2'-0	54/16	5/16	48	
							1793 #

STEEL: ASTM A709-36 A709-50 A709-50W Unless Noted

WELDING ELECTRODE: E70 See Welding Proc. None

HOLES: 13/16 15/16 Unless Noted As Noted None

PAINT: None Galv. After Fab. As Noted

SPECIAL PAINT:

SPECIAL CLEANING: Blast Clean SSPC SP10 None

ITEM NO. 506.55 BR. NO. 3 PROJ. NO. BRZ 1444(22)

TITLE: CROSSFRAME DETAILS

APPROVED: 9-5-01
PRINT DIST.

5 4-7-01 APPR.
ORIG. 9-5-01 FAB.

5 7-13-01 APP
5 8-24-01 APP
5 11-19-01 APP
11 11-19-01 FAB

FOR APPROVAL
National Eastern Corporation
Plainville, Connecticut

JOB: T.H. 1 OVER THE WHITE RIVER
ROYALTON, VERMONT

CUSTOMER: BECK & BELLUCCI, INC.

DESIGNER: VERMONT AGENCY OF TRANSPORTATION

WORK ORDER NO. 15873 DRAWING NO. 20-4 REV. 1

REVISOR: OK

ADDED a46 11-14-01 JCM