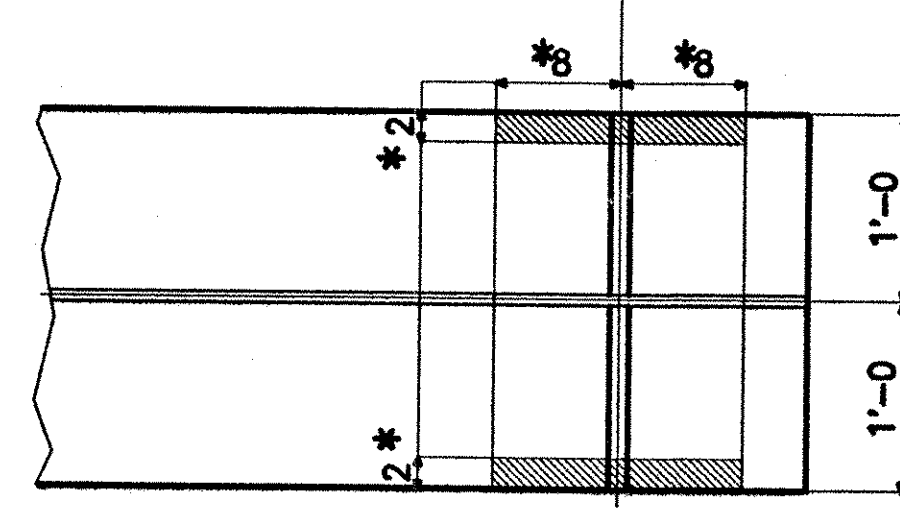
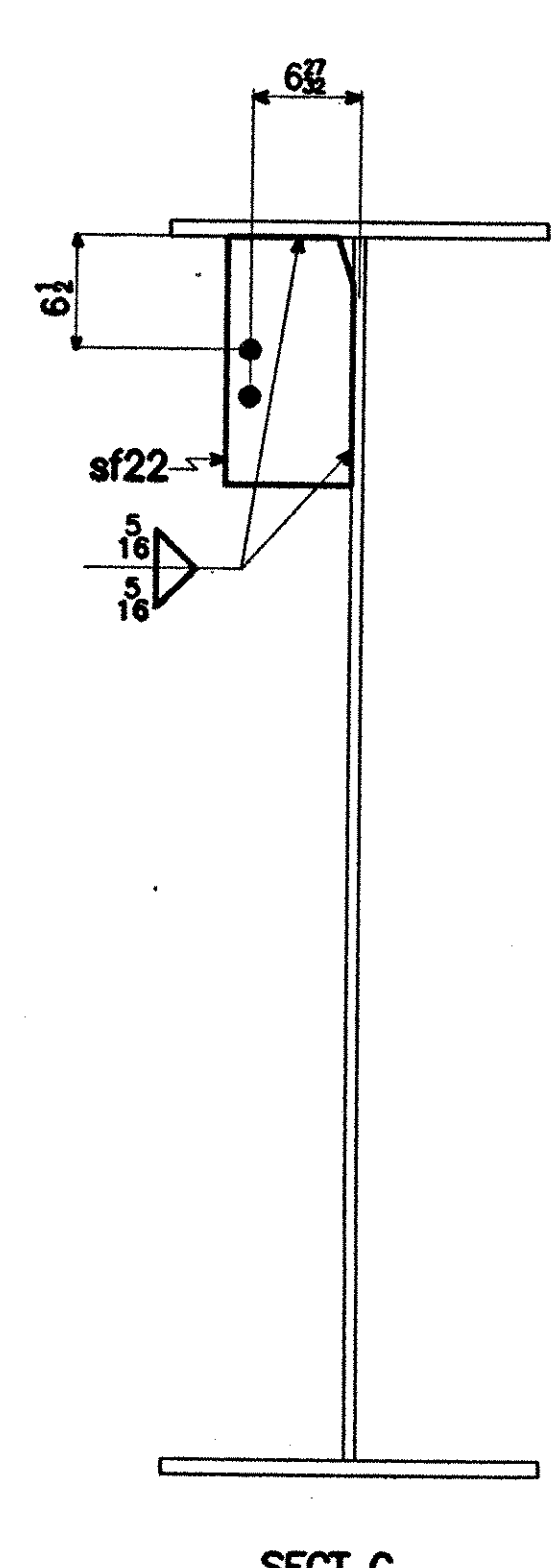
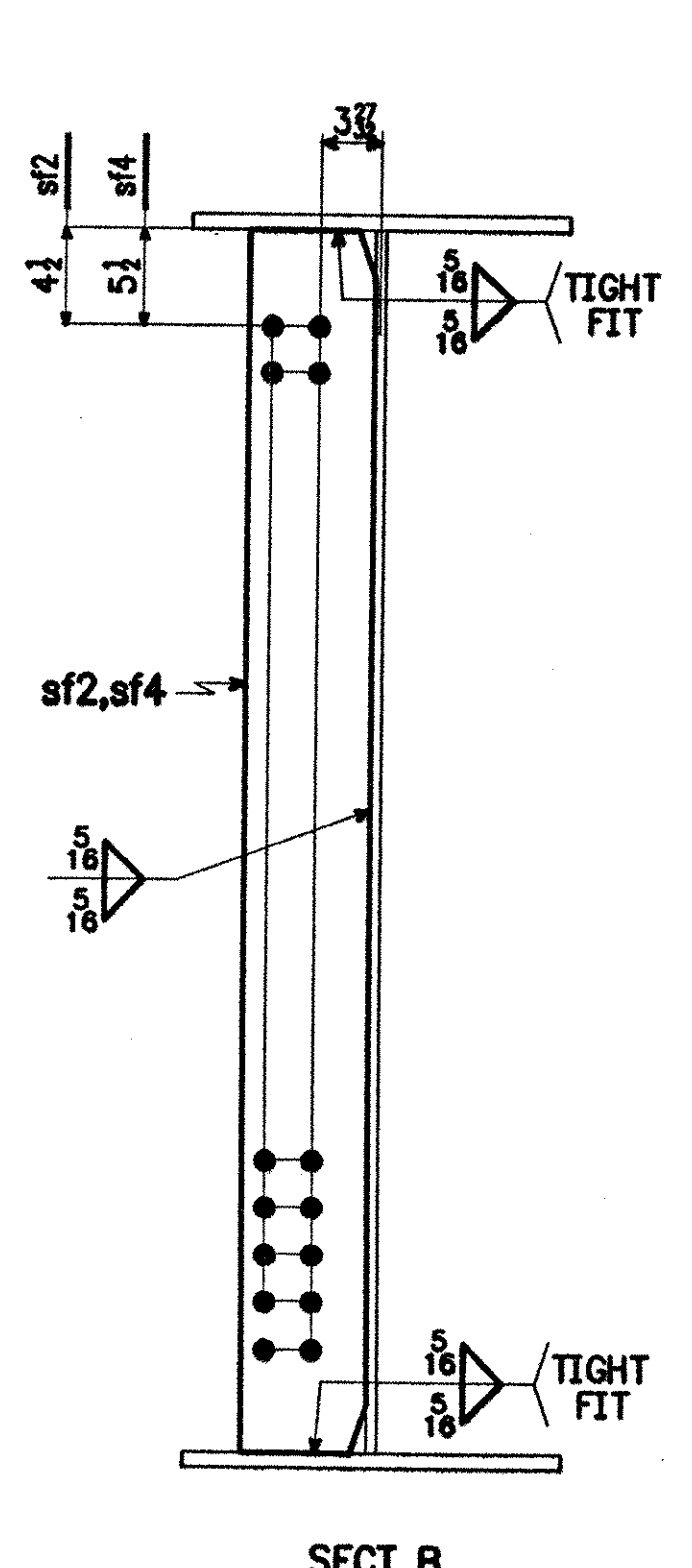


1 ~ GIRDER ~ G3C
GIRDER



- NOTES:**
- FOR GENERAL NOTES, SEE SHT. GN1.
 - FOR GIRDER CAMBER DIAGRAM, SEE DWG. 12-4.
 - FOR GIRDER STANDARD DETAILS, SEE DWG. 12-9.
 - FOR FIELD SPLICE DETAIL, SEE DWG. 12-10.

RECEIVED
CND BY *WBS* OK'D BY
DEC 27 2001
RESUBMIT APPROVED *As Noted*
BY *CPW* DATE 1/4/02

- FLG, WEB & EXT DIM 12-17-01 AV
- PAINT NOTE 11-19-01 JCM
- SECT H 9-11-01 JCM

SHIP MARK		BILL OF MATERIAL				WORK ORDER NO.	DRAWING NO.	REV.
						15873	12-23	3
NO.	MARK	SHAPE	LENGTH	ITEM NO.	WT.	REMARKS		
G3C	1	GIRDER						
	1	tf1	PL 1" x 24	77'-6 1/8	5-1/4	6332	CVN	
	1	tf2	PL 1" x 24	55'-0 1/8	5-1/5	4494	CVN	
	1	bf1	PL 1" x 24	77'-6 1/8	5-1/4	6332	CVN	
	1	bf2	PL 1" x 24	54'-11 1/8	5-1/5	4490	CVN	
	1	wp1	PL 1/8 x 78	79'-6 1/8	5-3/8		CVN	
	1	wp2	PL 1/8 x 78	53'-1 1/8	5-3/8	24104	CVN	
	1	bs2 ^L	PL 1 1/2 x 11 1/2	6'-6 1/2	5-1/11	318	M1E	
	1	bs2 ^R	PL 1 1/2 x 11 1/2	6'-6 1/2	5-1/11	318	M1E	
	5	sf2	PL 1/2 x 8	6'-6	5-3/8	442		
	5	sf4	PL 1/2 x 8	6'-6	5-3/8	442		
	12	sf22	PL 1/2 x 8	1'-4	5-3/8	218		
	2	f1	PL 1/2 x 24	3'-4 1/2	5-3/8	345	CVN	
	4	f2	PL 1/2 x 10	3'-4 1/2	5-3/8	287	CVN	
	2	f3	PL 1 1/2 x 24	1'-9 1/2	5-1/2	368		
	2	ws1	PL 1/2 x 72 1/2	1'-7 1/2	5-3/8	501	CVN	

STEEL: ASTM A709-36 A709-50 A709-50W Unless Noted

WELDING ELECTRODE: E70 See Welding Proc. None

HOLES: 13/16 15/16 1 1/16 Unless Noted As Noted None

PAINT: None Galv. After Fab. As Noted SEE SHT GN1

SPECIAL PAINT: _____

SPECIAL CLEANING: Blast Clean SSPC SP10 None

ITEM NO. 506.55 BR. NO. 3 PROJ. NO. BRZ 1444(22)

TITLE: GIRDER ~ G3C

APPROVED: 9-5-01
PRINT DIST.

5	4-7-01	APPR.
ORIG.	9-5-01	FAB.
5	7-13-01	APP
5	8-24-01	APP
5	9-12-01	APP
12	9-12-01	FAB
5	11-19-01	APP
11	11-19-01	FAB
5	12-18-01	APP
11	12-18-01	FAB

CHECKED TS 3/01
DRAWN AV 3/01

National Eastern Corporation
Plainville, Connecticut

JOB: T.H. 1 OVER THE WHITE RIVER
ROYALTON, VERMONT

CUSTOMER: BECK & BELLUCCI, INC.

DESIGNER: VERMONT AGENCY OF TRANSPORTATION

WORK ORDER NO. 15873
DRAWING NO. 12-23
REV. 3

FOR APPROVAL
REVISED