

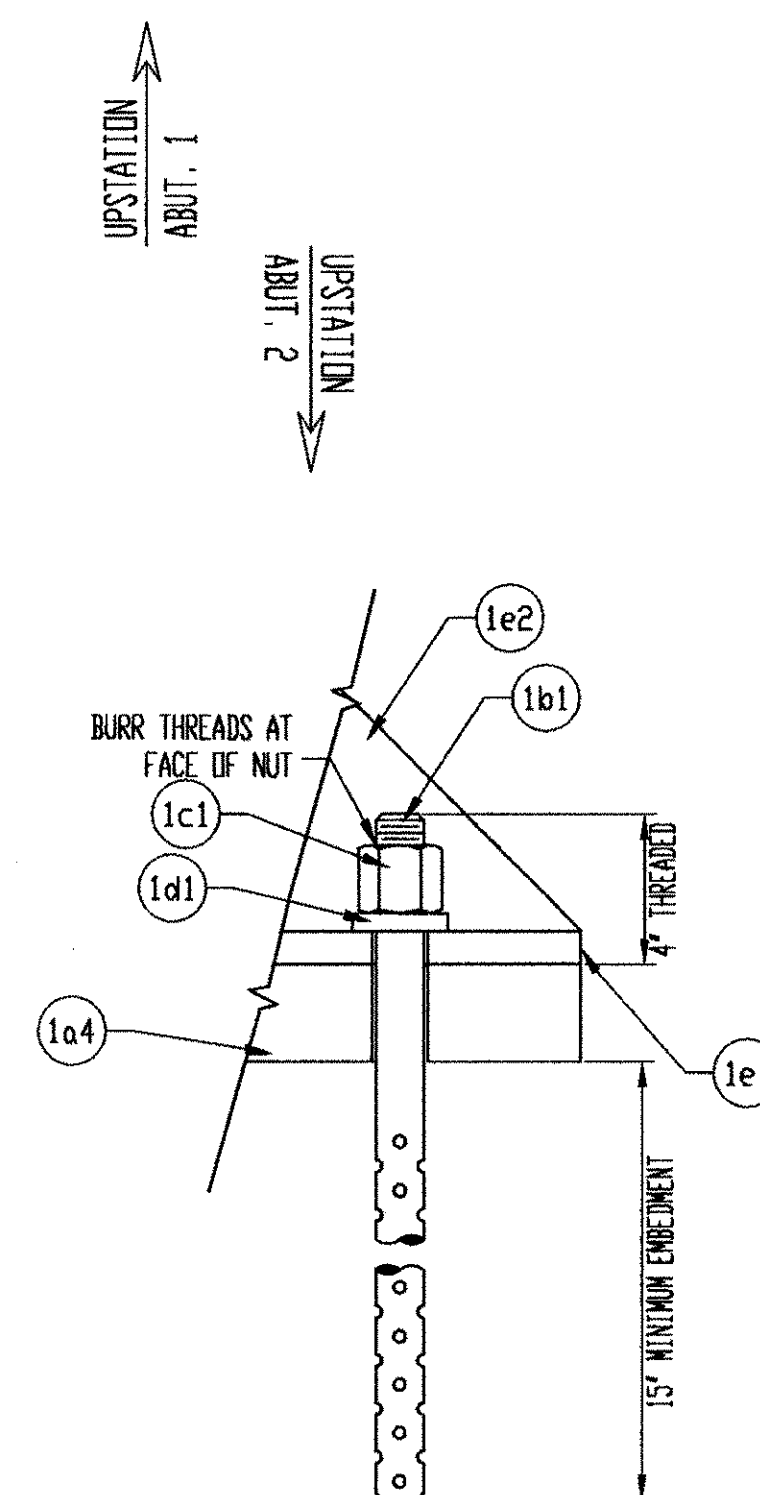
DATA	2034-1104
AASHTO SHAPE FACTOR	7
AREA OF COMPRESSION	153.0
AREA OF SHEAR	153.0
EFFECTIVE RUBBER THICKNESS	4.0
LENGTH/HEIGHT	2.1

**PLAN VIEW**

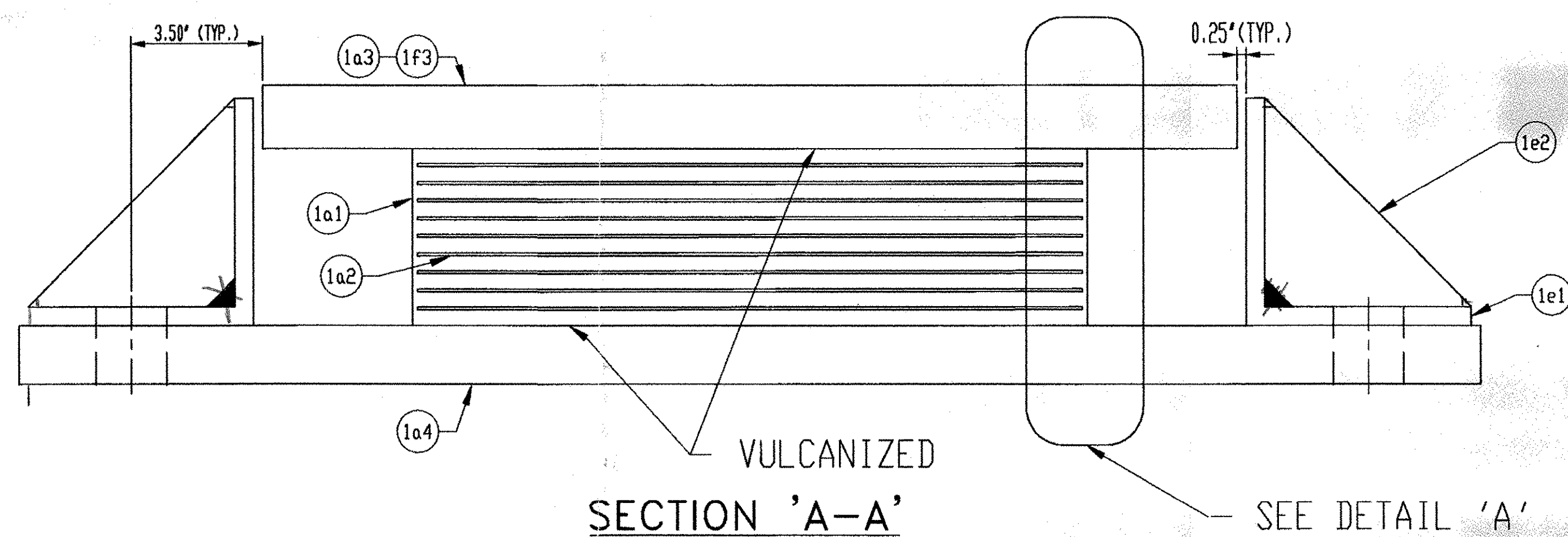
MARK: 2034-1104-A  
 EXPANSION BEARING  
 (5) REQ'D @ ABUT. 1  
 (5) REQ'D @ ABUT. 2  
 (10) REQ'D TOTAL

**SOLE PLATE SCHEDULE**

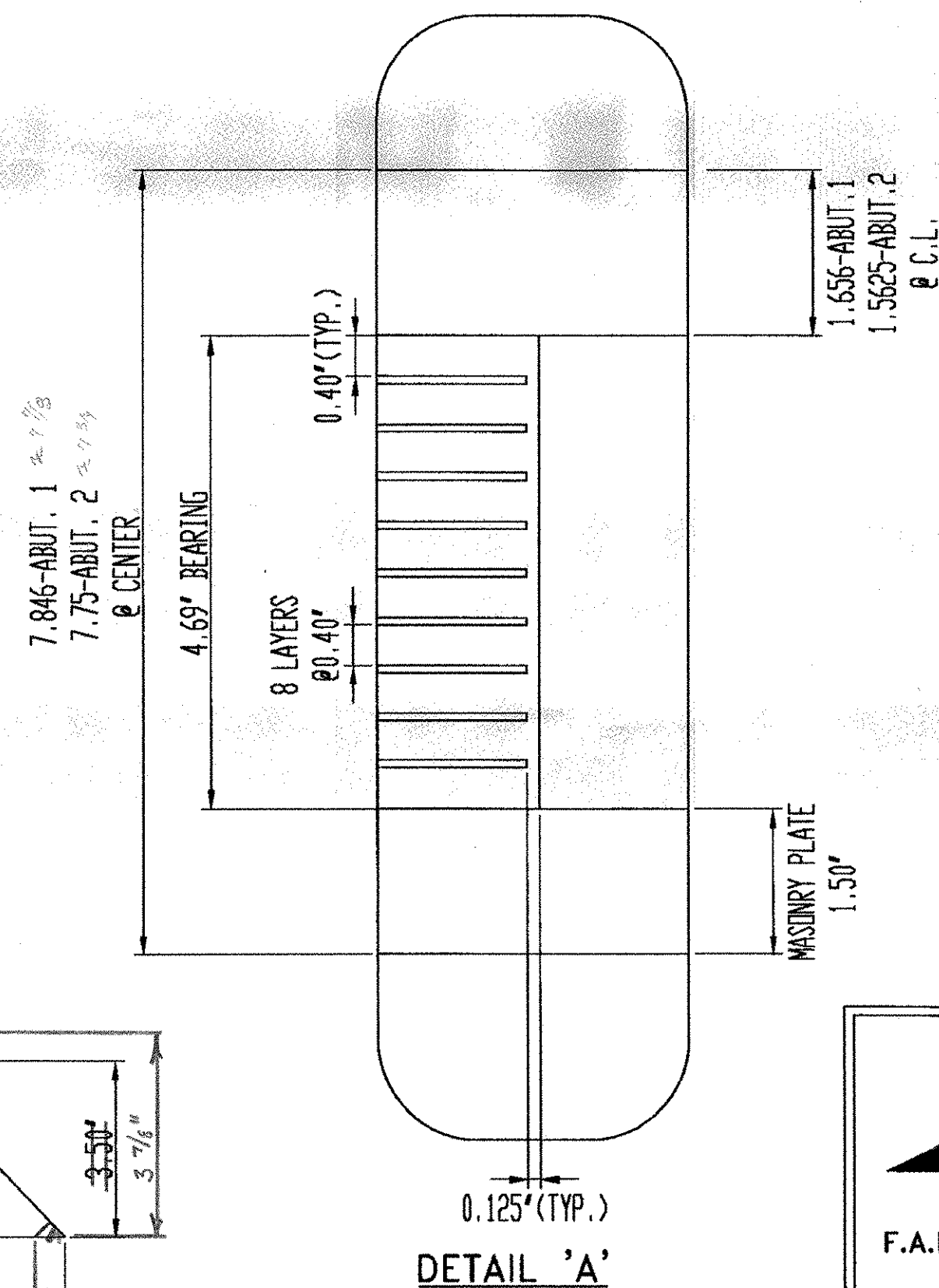
LOCATION	T1	T2	MARK
ABUT. 1	1.5'	1.8125'	1a3
ABUT. 2	1.5'	1.625'	1f3



**SWAGED ANCHOR DETAIL**



**SECTION 'A-A'**



**DETAIL 'A'**

LINE	PART	MARK	NO. REQ'D	DESCRIPTION	REMARKS
1	ELASTOMERIC BEARING	1A	5	ELASTOMERIC BEARING	
2	ELASTOMERIC BEARING	1a1	5	4.6875" X 18" X 8.5"	DURIMETER 60±5, NEOPRENE, GR. 4(166.80 LBS.)
3	SHIMS	1a2	45	14 GA X 17.75" X 8.25"	ASTM A570 GR 36
4	SOLE PLATE	1a3	5	1.5"-1.8125" X 26" X 11"	ASTM A709 GR 50, VULCANIZED, METALIZED, PAINTED
5	MASONRY PLATE	1a4	5	39" X 11" X 1.5" W/(4) 1.875"Ø HOLES	ASTM A709 GR 50, VULCANIZED, METALIZED, PAINTED
6	ANCHOR BOLTS	1B	40	ANCHOR BOLTS	
7	ANCHOR BOLTS	1b1	40	1.5"Ø X 20", 4" THREAD, 14" SWEDGE	ASTM A449, GALVANIZED A153
8	HEAVY HEX NUT	1C	40	HEAVY HEX NUT	
9	HEAVY HEX NUT	1c1	40	1.5Ø	ASTM A563 GR DH
10	WASHER	1D	40	WASHER	
11	WASHER	1d1	40	3" X 3" X .375" W/1.625"Ø HOLE	ASTM A36, GALVANIZED A123
12	SIDE RETAINER	1E	20	SIDE RETAINER	
13	SIDE RETAINER	1e1	20	16" X 6" X .5" W/(2) 1.875"Ø HOLES	ASTM A709 GR 50, METALIZED, PAINTED
14	RETAINER STIFFENER	1e2	60	5" X 3.5" X 7.75" BAR	ASTM A709 GR 50, METALIZED, PAINTED
15	ELASTOMERIC BEARING	1F	5	ELASTOMERIC BEARING	
16	ELASTOMERIC BEARING	1a1	5	4.6875" X 18" X 8.5"	DURIMETER 60±5, NEOPRENE (166.80 LBS.)
17	SHIMS	1a2	45	14 GA X 17.75" X 8.25"	ASTM A570 GR 36
18	SOLE PLATE	1f3	5	1.5"-1.625" X 26" X 11"	ASTM A709 GR 50, VULCANIZED, METALIZED, PAINTED
19	MASONRY PLATE	1a4	5	39" X 11" X 1.5" W/(4) 1.875"Ø HOLES	ASTM A709 GR 50, VULCANIZED, METALIZED, PAINTED

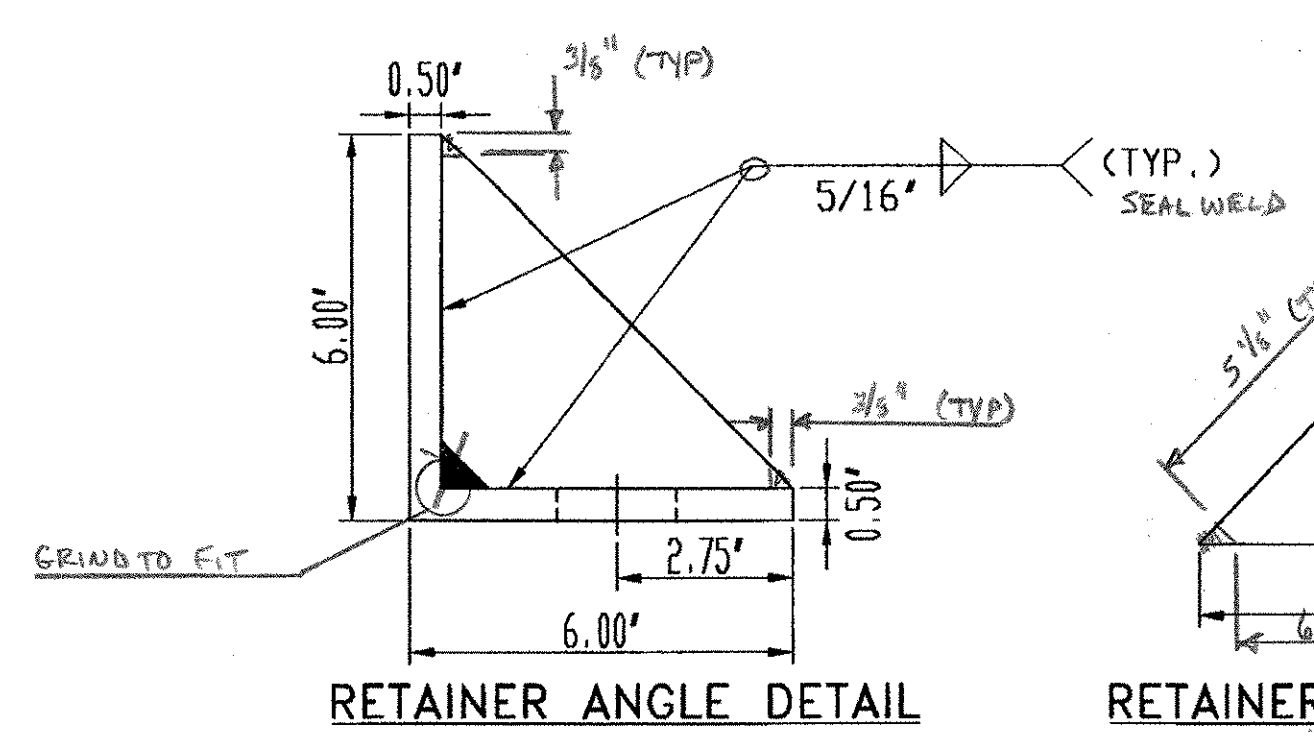
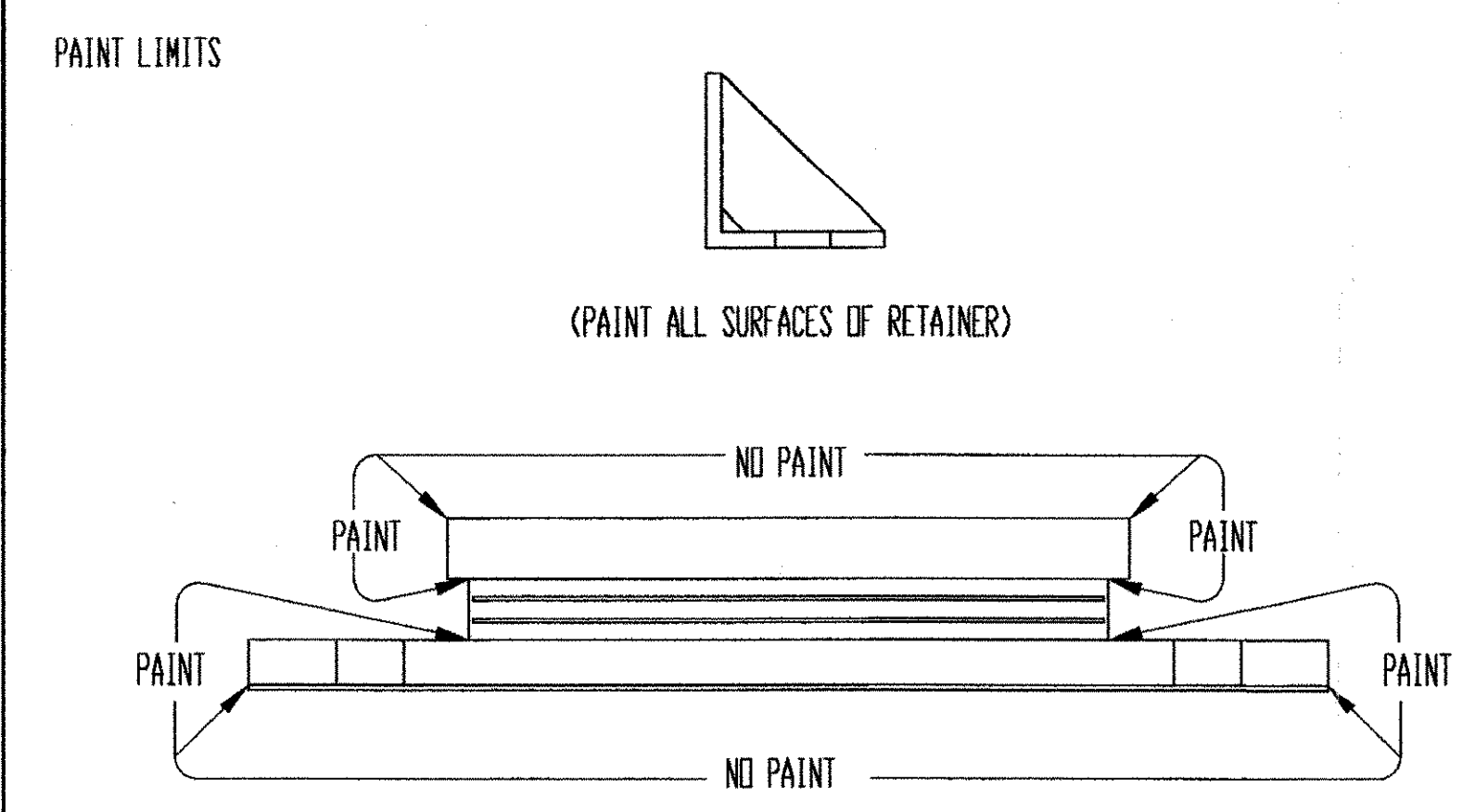
**GENERAL NOTES:**

- PAD AND MATERIALS SHALL CONFORM TO VERMONT DEPARTMENT OF TRANSPORTATION - DIVISION OF HIGHWAYS SPECIFICATIONS FOR ELASTOMERIC BEARINGS.
- THESE SHOP DRAWINGS WERE PREPARED IN ACCORDANCE WITH THE CONTRACT PLANS AND SPECIFICATIONS. THE D.S. BROWN COMPANY DOES NOT ACCEPT LIABILITY FOR THE DESIGN OF THE PRODUCTS DETAILED IN THESE SHOP DRAWINGS.
- THE D.S. BROWN COMPANY TO SUPPLY ONLY THE PARTS SHOWN ON THIS DRAWING.
- THE BEARINGS SHALL BE SUBJECTED TO RANDOM IN-HOUSE ELASTOMER TESTING AND RANDOM IN-HOUSE PROOF LOAD TESTING IN ACCORDANCE WITH AASHTO DIVISION I, SECTION 14 (METHOD "A") AND AASHTO DIVISION II, SECTION 18 (GRADES 0, 2, OR 3) (GRADE 4).
- D.S. BROWN SHALL PROVIDE A TYPE D CERTIFICATION OF ALL ELASTOMERIC BEARINGS PER VERMONT AGENCY OF TRANSPORTATION STANDARD SPECIFICATIONS SECTION 731.03.

- SURFACES TO BE METALIZED AND COATED IN ACCORDANCE WITH AWS C 2-2: 2.18-93
- COATING TO BE PURE ZINC (99.9% PURITY, MIN.)
- ALL SURFACES (EXCEPT WHERE VULCANIZING) TO RECEIVE A MINIMUM OF 6 MILS.
- BLAST CLEAN SURFACES TO BE THERMAL SPRAYED TO WHITE METAL. FINAL SURFACE APPEARANCE SHALL BE EQUIVALENT TO PREPARATION GR. SA3 AS DEFINED BY ASTM D 2200.
- ADHESION TEST IN ACCORDANCE WITH AASHTO M-11, SECTION 9, REQ'D.
- METALIZED SURFACES SHALL RECEIVE A SEAL COAT OF CARBOLINE RUSTBOND PENETRATING SEALER TO A MINIMUM DRY FILM THICKNESS OF 2 MILS.
- PRIOR TO METALIZING, ALL CORNERS AND EDGES OF STEEL PLATES, SHAPES, ETC. SHALL BE GROUND TO A 1/16" RADIUS.

RECEIVED  
 CR'D BY WKS CR'D BY RSY  
 FEB 26 2001  
 RESUBMIT APPROVED As noted  
 BY DATE

D.S. BROWN 2034.1104.25363.01 SHEET 1 OF 1



**RETAINER ANGLE DETAIL**

**RETAINER STIFFENER DETAIL**

F.A.P. NO.: N/A  
 STATE PROJ. NO.: C BRZ 1444(22)  
 BRIDGE NO.: 3 (RO'ALTON)  
 DESIGNER: -  
 CONTRACTOR: BEC & BELLUCI

THE D.S. BROWN COMPANY, INC.  
 NORTH BALTIMORE, OHIO 45872-0168 U.S.A.  
 SCALE: FULL  
 DATE: 01-10-01  
 T.H. 1 OVER THE WHITE RIVER  
 WINDSOR COUNTY VERMONT  
 ELASTOMERIC BEARING

DATE	SYM	REVISION	DR	CK

DRAWING NUMBER  
2034-1104-01