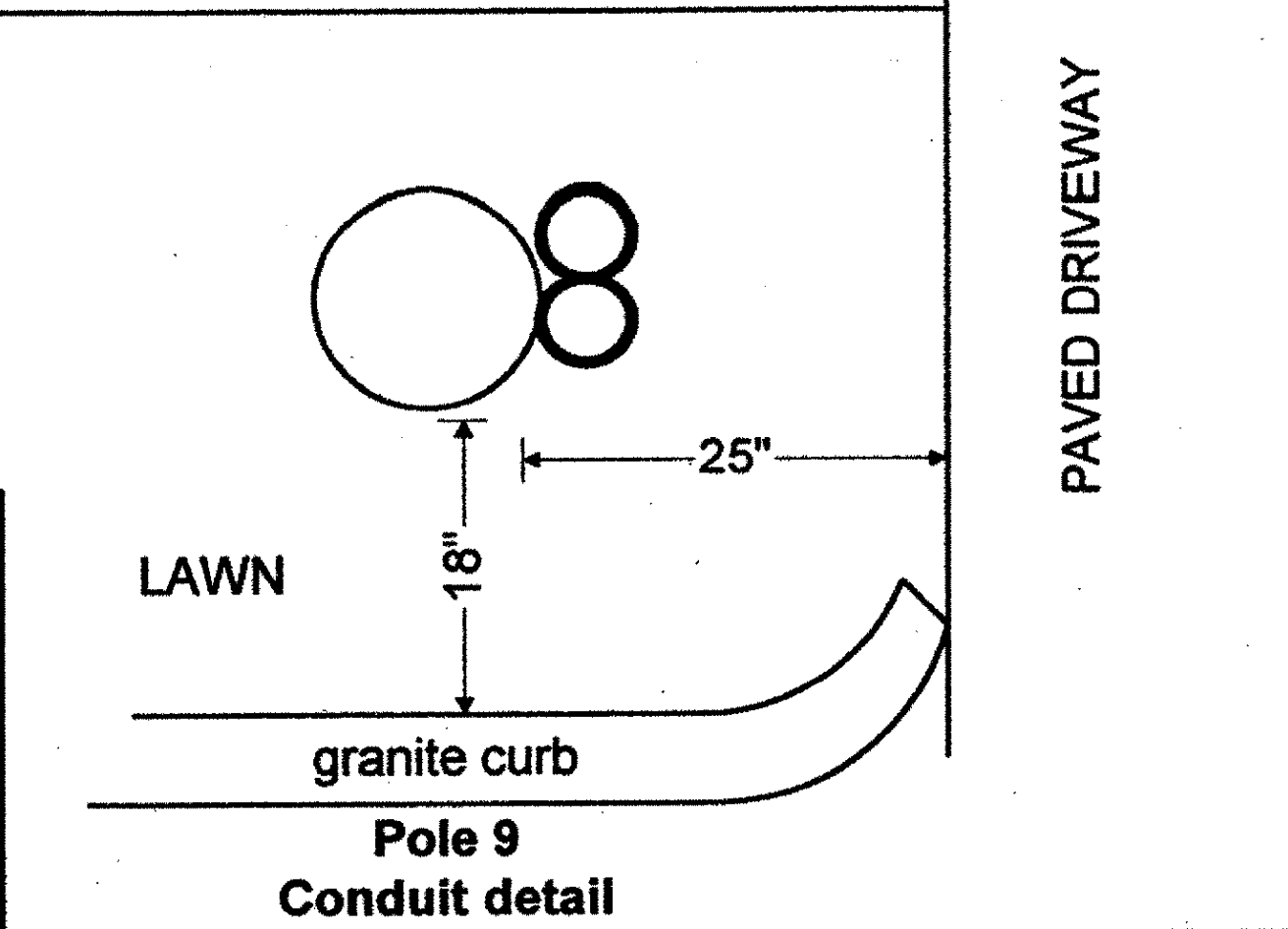


**WORK ORDER
CONCRETE SIDEWALK**



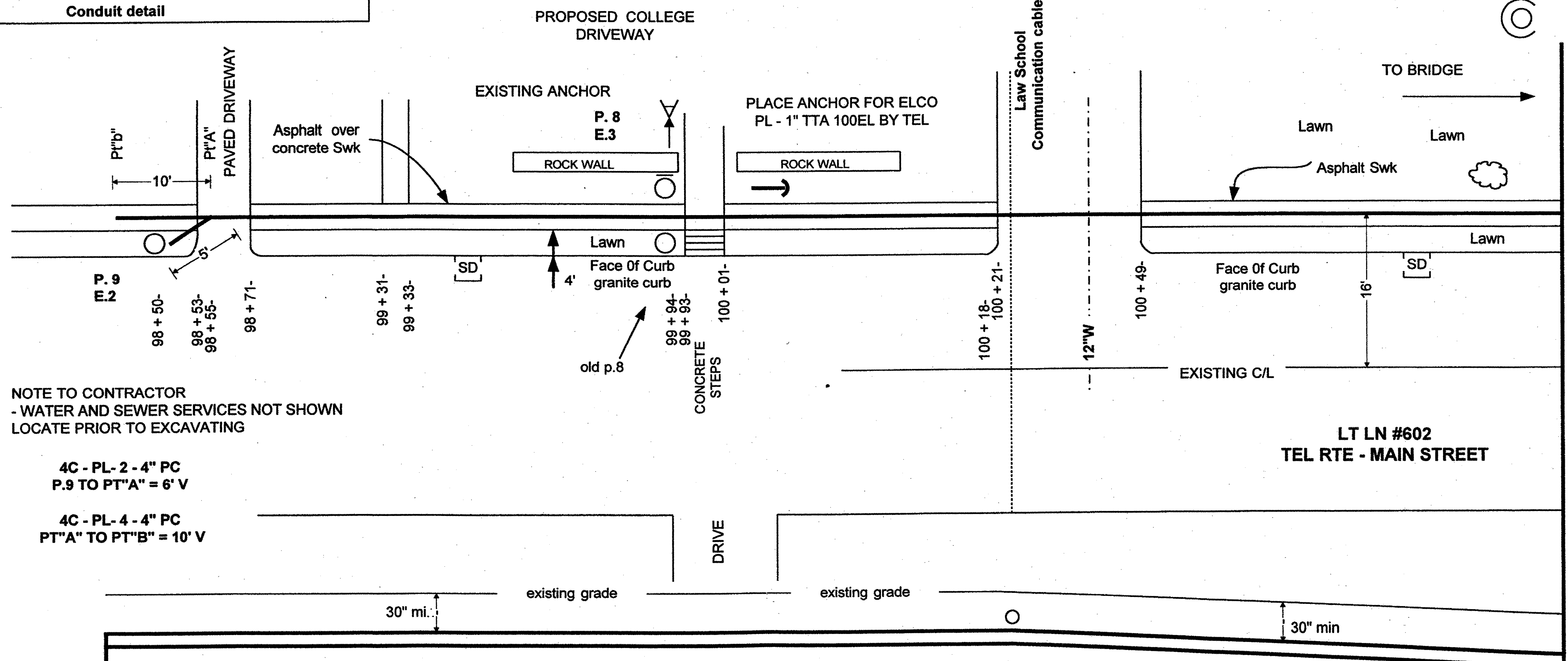
Notice: Not for Use/disclosure outside of BELL ATLANTIC without written agreement

BELL ATLANTIC

	SAFETY NOTES: HIGHWAY TRAFFIC PEDESTRIAN TRAFFIC		MOD/REV NO.	DATE	EWO NO.
	SIGNATURE				PRINT 4 OF
	DATE 5/24/2000				PREPARED BY: J. BRIAN GRESL
	TYPE				C.O. /EXCHANGE NAME: S. ROYALTON
PRE CT YES <input type="checkbox"/> NO <input checked="" type="checkbox"/>		AERIAL	RECORD REF: INPUT		C.O. /EXCHANGE CODE: 4875
PRIMARY VOLTAGE TO GROUND 7.2 KV MGN SYSTEM		UNDERGROUND			MUNICIPALITY: S. ROYALTON
CABLE PRESS.	UNDER PRESS. YES <input type="checkbox"/> NO <input checked="" type="checkbox"/>	CONDUIT			
TRANSMISSION	26GA LIMIT YES <input type="checkbox"/> NO <input checked="" type="checkbox"/>	BLOCK (NYT)			
		AMT. BRIDGE TAP	INPUT		MANHOLE LOCATION MH# NA KF

PROJECT - 131154

SEE PLAN #



NOTE TO CONTRACTOR
- WATER AND SEWER SERVICES NOT SHOWN
LOCATE PRIOR TO EXCAVATING

4C - PL-2 - 4" PC
P.9 TO PT"A" = 6' V

4C - PL-4 - 4" PC
PT"A" TO PT"B" = 10' V

6/23/00

SEE PLAN # 3

SEE PLAN # 6

RECEIVED
JUN 26 2000
UTILITIES

Sheet 86 of 118