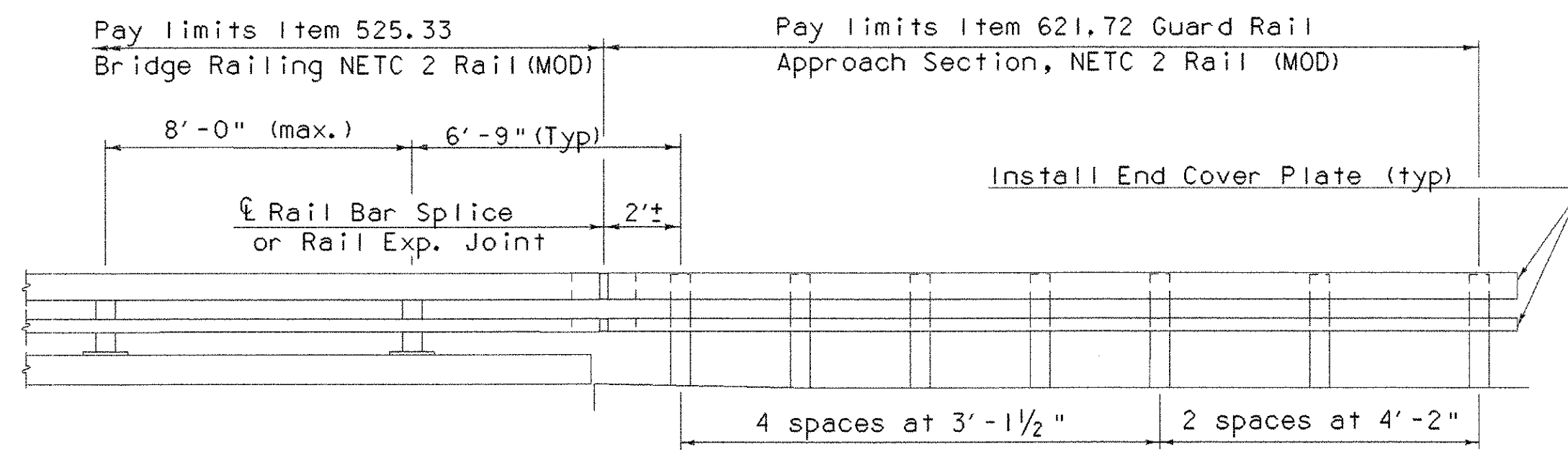


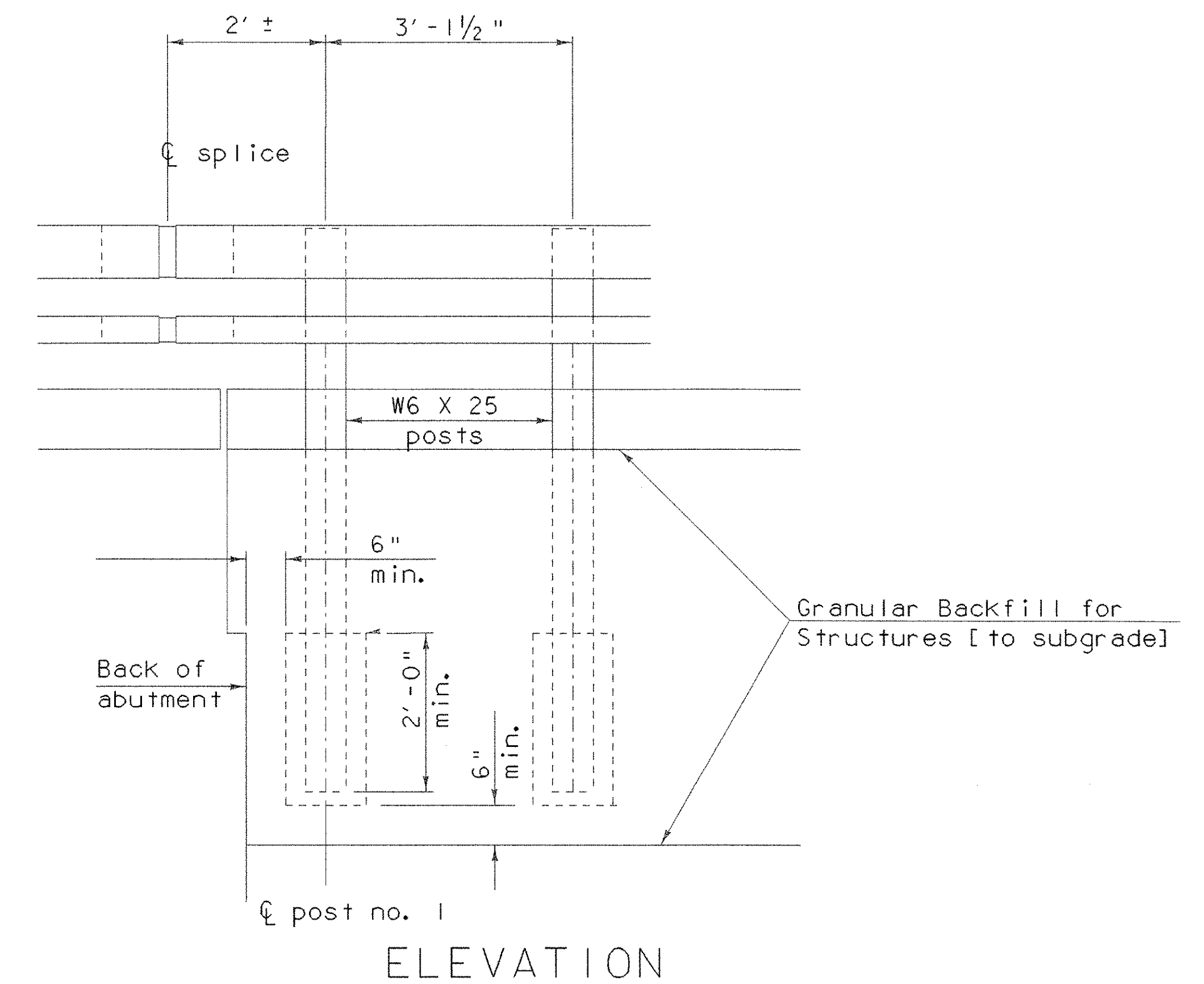
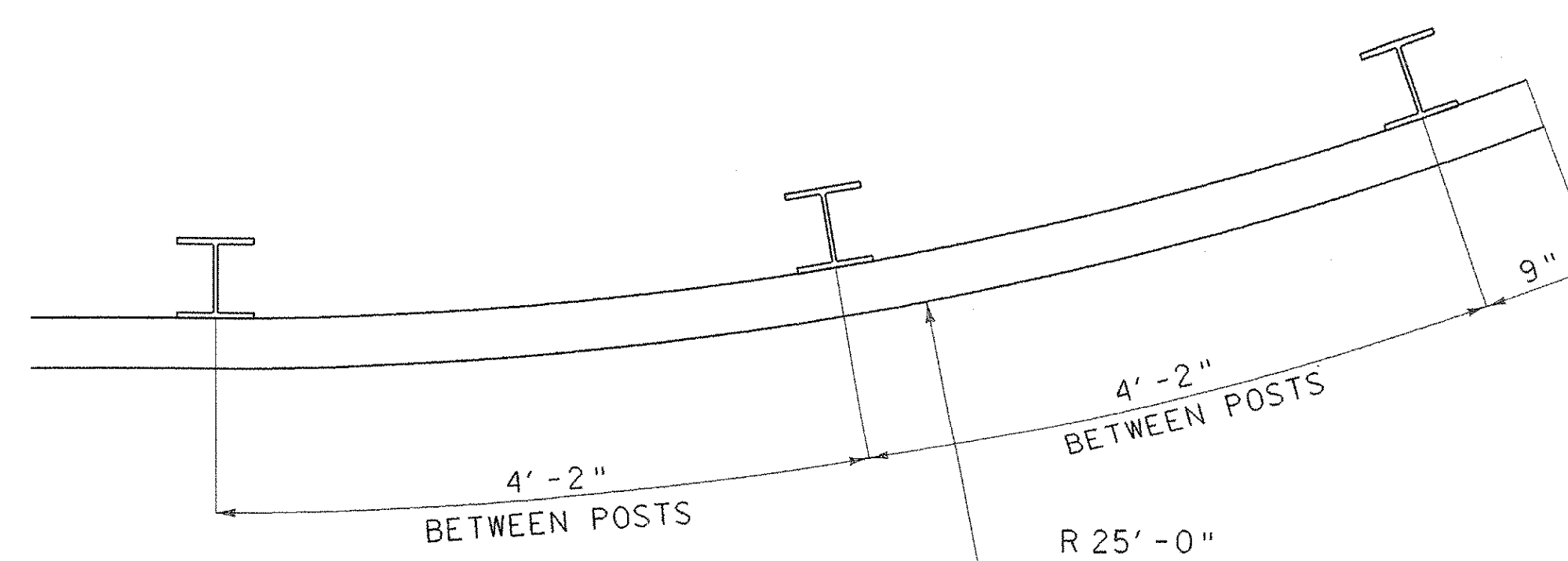
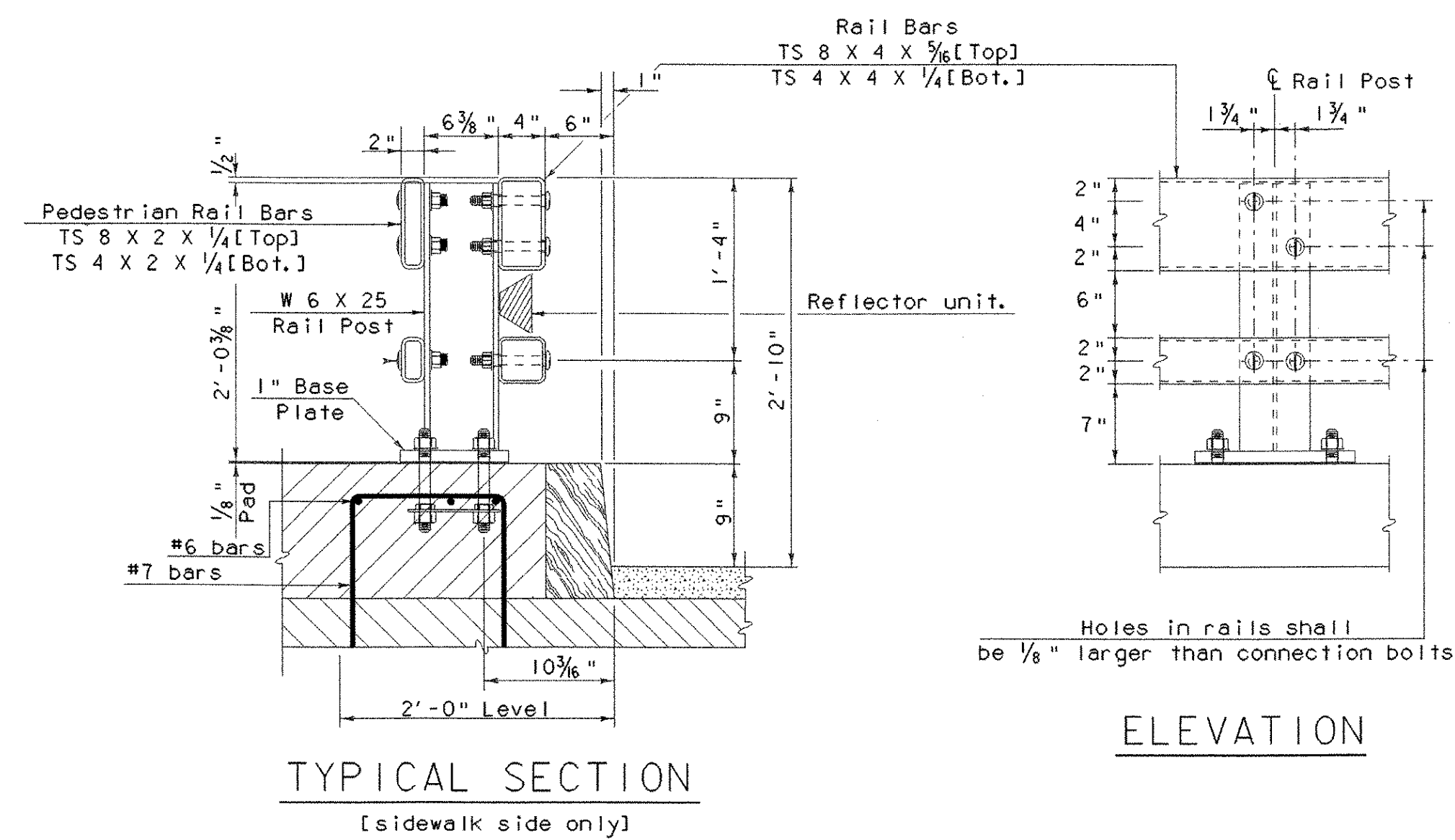
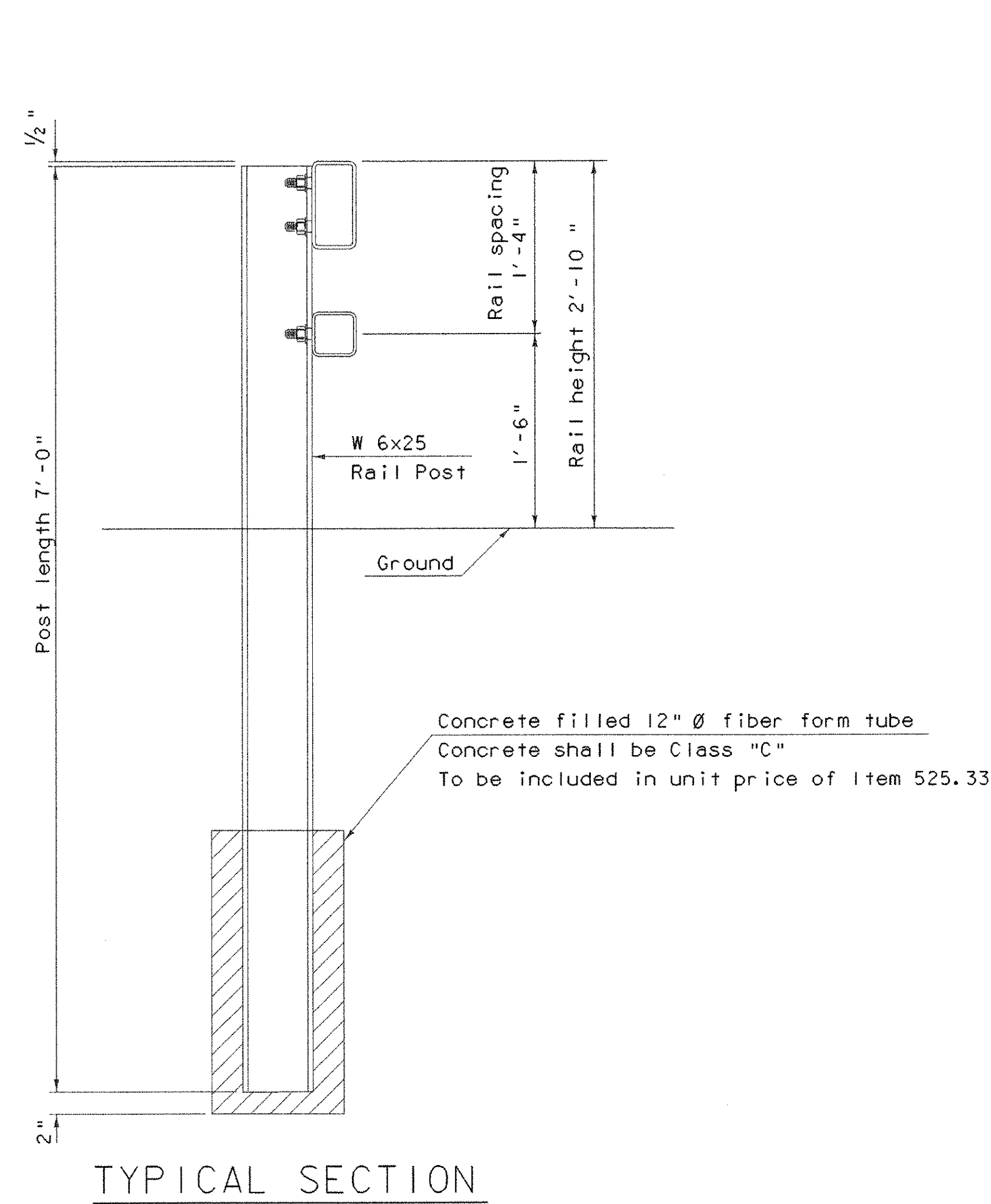
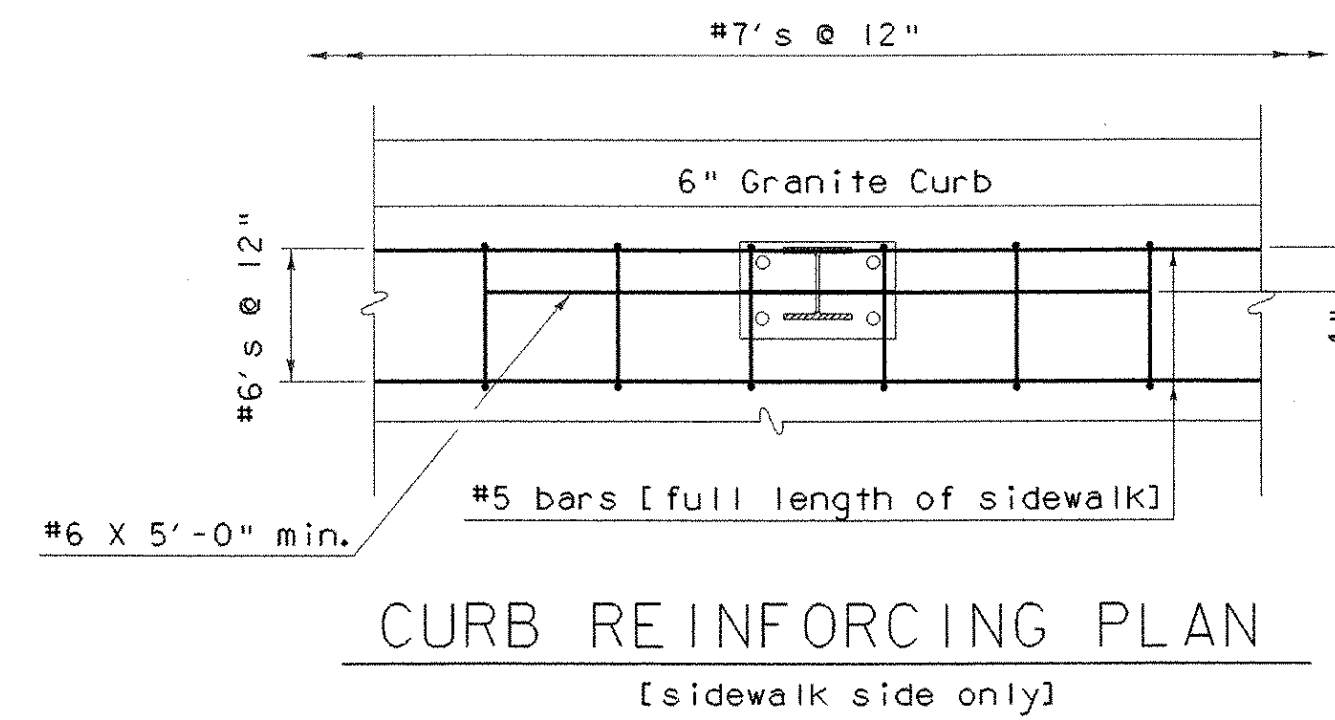
# NETC 2 RAIL DETAILS

## Notes:

1. Refer to detail sheet 72 for additional details, notes and materials specifications.
2. To facilitate field fit - up of the transition railing posts shall be set loosely into fiber form tubes while transition parts are being assembled. Post holes shall be backfilled with a concrete mix approved by the Engineer. Payment for components, including backup plate and end terminal connector for guard rail, augering, fiber form tubes and concrete, and installation shall be considered incidental to Bridge railing, N.E.T.C. 2 rail.
3. The reflectorized aluminum delineation is to be erected every 30' (or closest post) with 2 No. 8 X 3/4" self tapping screws. Delineators shall meet specification requirements for ASTM B209 alloy 5052-H32
4. Reflective material shall meet requirements of subsection 750.08 and shall be of encapsulated lens silver or amber. Amber is to be installed on the driver's left and silver on their right.
5. Delineators shall be installed on the curb (traffic) side of all traffic barriers on the bridge and approaches. Payment shall be subsidiary to all other rail items.
6. All approach rail splices shall be lapped in the direction of traffic flow.



RAILING TRANSITION ELEVATION



PROJECT NAME:	ROYALTON BRZ 1444 (22)
PROJECT NUMBER:	
FILE NAME: 89j099/structures/sj099rail.dgn	PLOT DATE: 25-SEP-2000
IPARM NAME: sj099netc2.i	DRAWN BY: P.R. ROWE
PROJECT LEADER: C.P. WILLIAMS	CHECKED BY: W.B. SYMONDS
DESIGNED BY: W.B. SYMONDS	SHEET 73 OF 118
NETC 2 RAIL DETAILS	