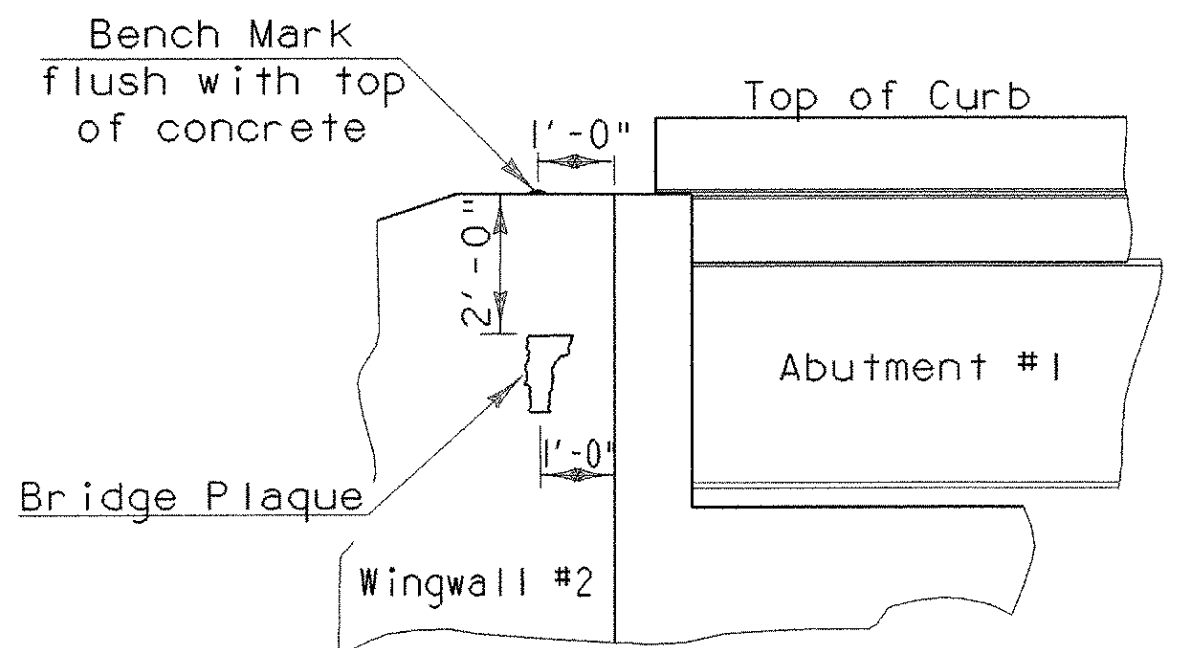


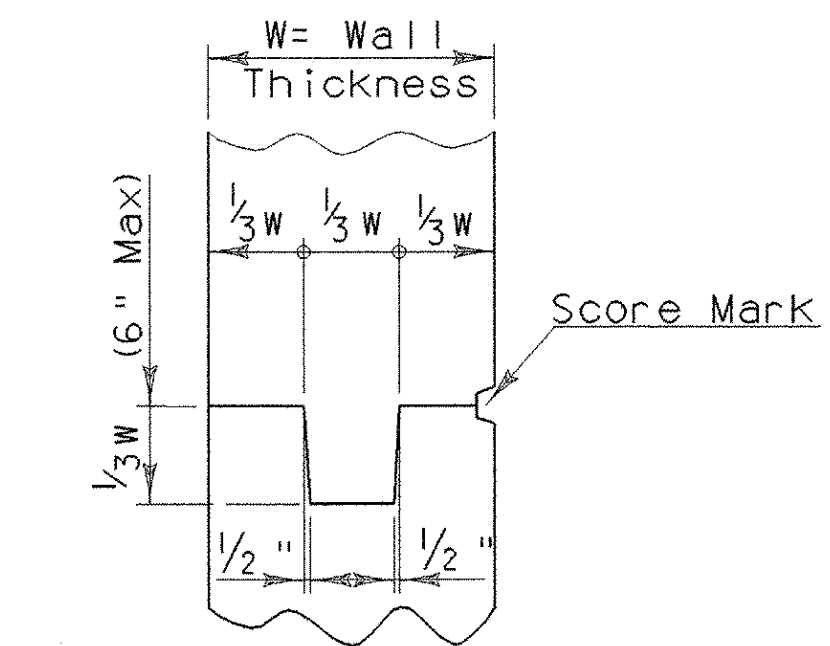
PLAN



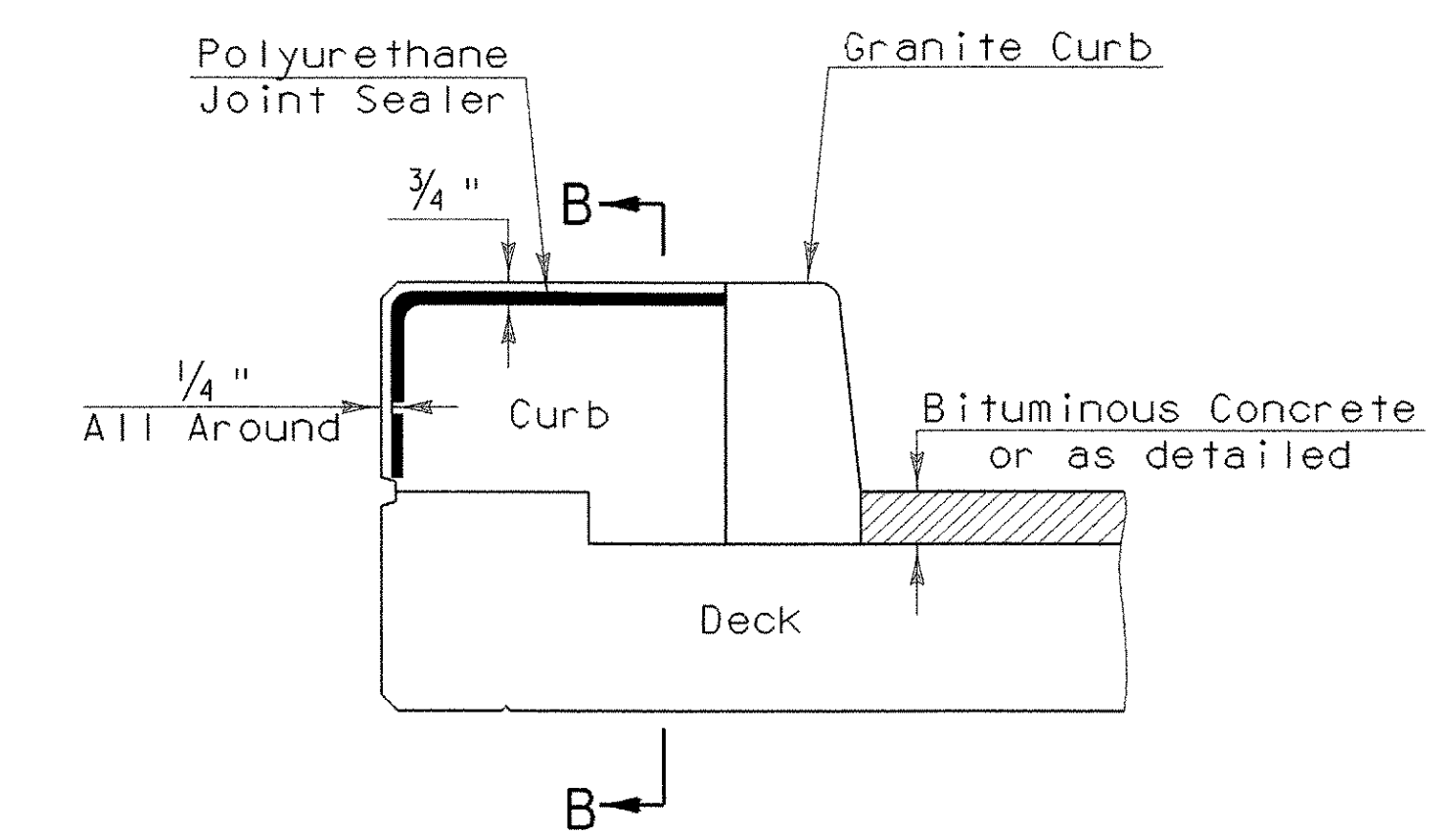
VIEW "A - A"

**LOCATE BENCH MARK AND BRIDGE PLAQUE**

The bench mark and bridge plaque will be supplied by The Agency of Transportation and shall be installed by the contractor at abutment #1 on the right side as shown or as directed by the engineer.



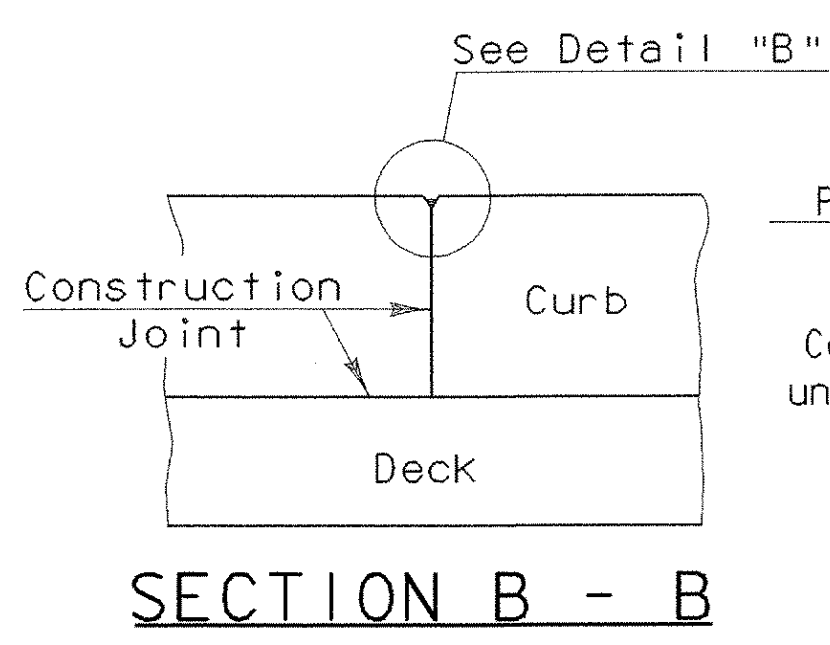
**TYPICAL CONCRETE CONSTRUCTION JOINT**



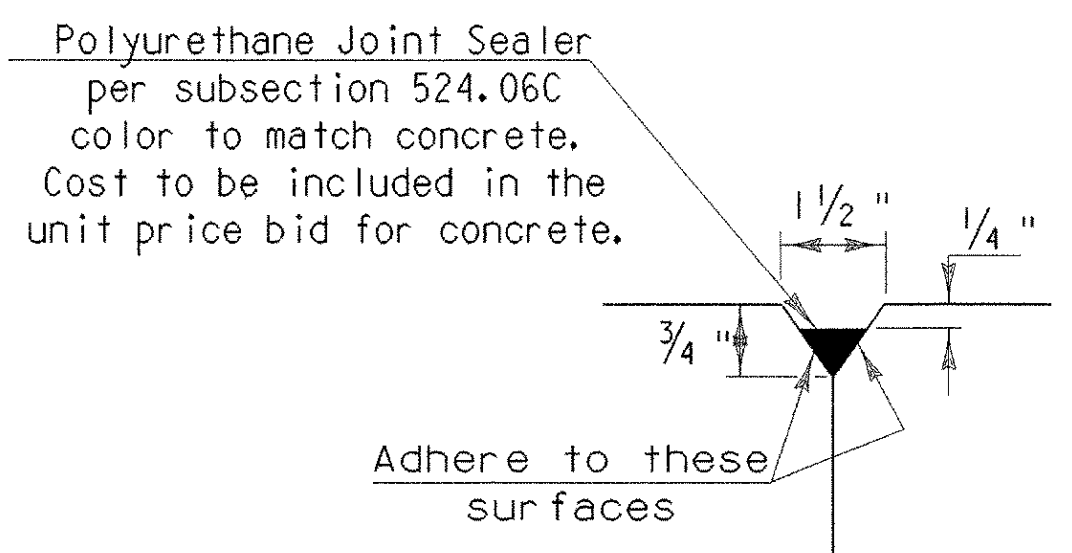
**TYPICAL SECTION THROUGH CONCRETE CURB CONSTRUCTION JOINT**

Notes:

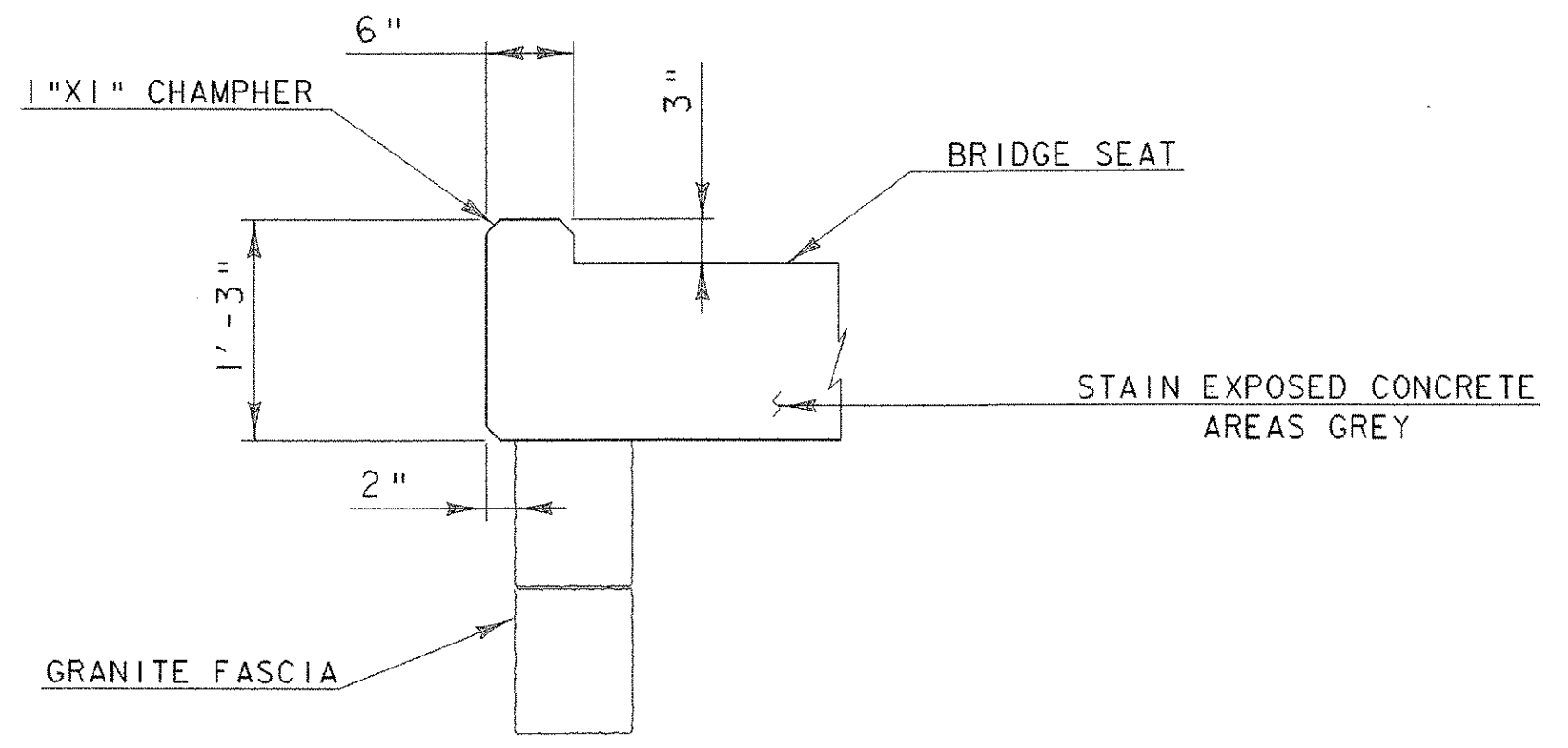
- 1) Construction joints through concrete curbs shall be spaced maximum 15'-0" center to center and shall be 1'-6" minimum from the center of the nearest bridge rail post. Concrete shall be placed in alternating sections with a minimum of 48 hours delay between adjacent pours.
- 2) Longitudinal reinforcing shall pass through concrete curb construction joints.
- 3) Construction joints through sidewalks shall be similar to concrete curb construction joints.



SECTION B - B



DETAIL "B"



**TYPICAL COPE DETAIL**

ALL DETAILS NTS UNLESS NOTED OTHERWISE

PROJECT NAME:	ROYALTON BRZ 1444 (22)		
PROJECT NUMBER:			
FILE NAME: 89j099/structures/sj099abl.dgn	IPARM NAME: sj099misc1.p	DESIGNED BY: W.B. SYMONDS	PLOT DATE: 25-SEP-2000
PROJECT LEADER: C.P. WILLIAMS	DESIGNED BY: W.B. SYMONDS	CHECKED BY: C.P. WILLIAMS	DRAWN BY: D.G. BASSETT
MISCELLANEOUS CONCRETE DETAILS			SHEET 48 OF 118