

NOTE: FOR DRIVE AND GUARD RAIL RADII SEE SHEETS 67-69.

TH 1 CURVE 1

Radius:	301.56
Delta:	19° 22' 38.23" Left
Degree of Curvature (Arc):	19° 00' 00.00"
Length:	101.99
Tangent:	51.48
Chord:	101.50
Middle Ordinate:	4.30
External:	4.36
Banking:	Normal

6" UNDERDRAIN (NOT SHOWN FOR CLARITY)
STA 102+25-STA 104+25 RT & LT
(OUTLET AROUND WINGWALLS)

UNDERDRAIN FLUSHING BASIN
STA 102+25 RT & LT

BEGIN APPROACH
STA 101+50.00

END APPROACH
STA 102+25.00

SEE SHEET 16 FOR DRAINAGE NOTES
SEE SHEETS 67-69 FOR CURB AND RAILING LAYOUT

RELOCATE DRY HYDRANT
FROM STA 104+22 - 50' RT
TO STA 103+10 - 80' RT

REMOVING AND RESETTING FENCE
STA 103+75 LT - 104+14 LT
STA 104+80 LT +/-

REMOVAL OF EXISTING FENCE
STA 104+65 LT - 104+75 LT

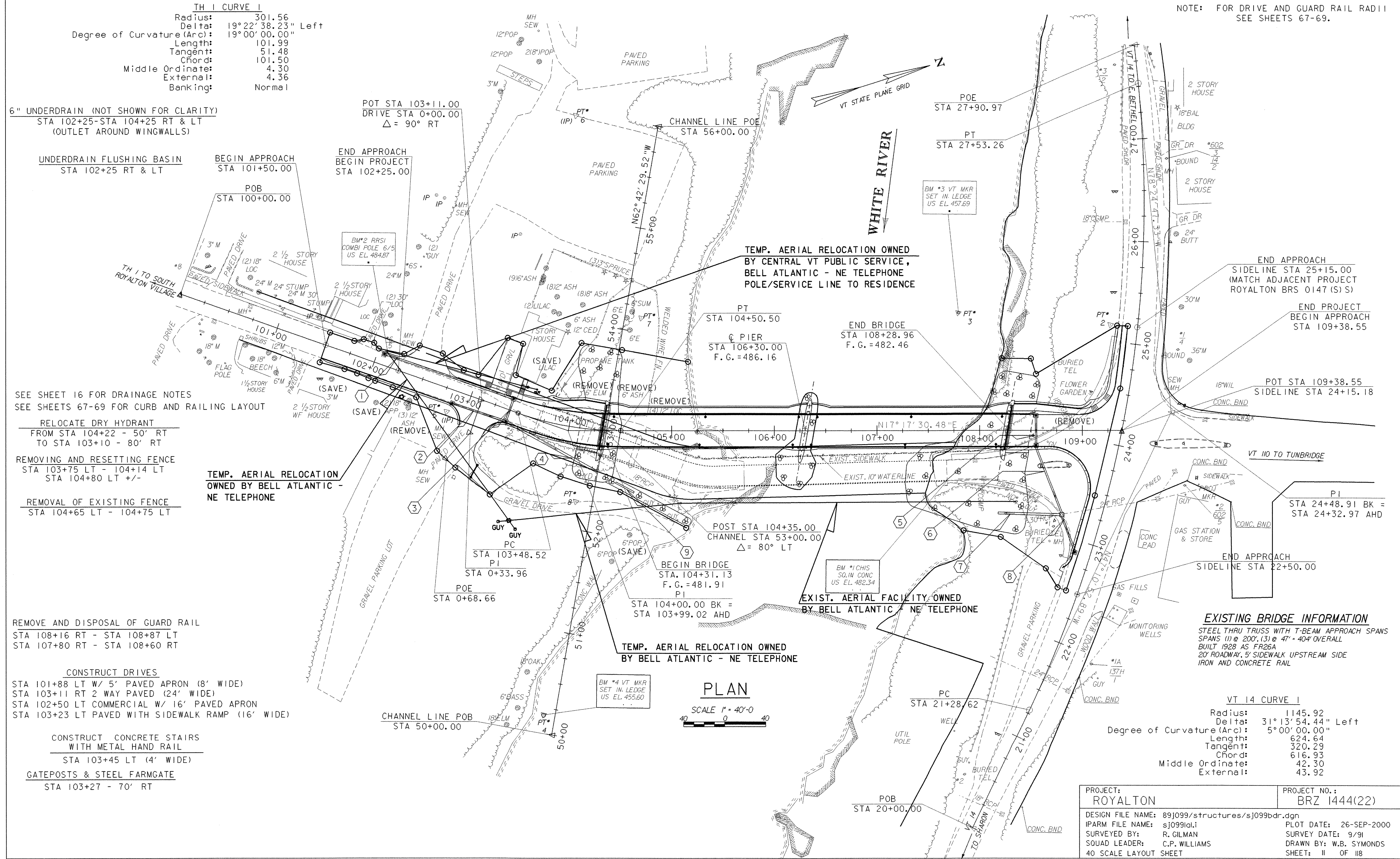
TEMP. AERIAL RELOCATION
OWNED BY BELL ATLANTIC -
NE TELEPHONE

REMOVE AND DISPOSAL OF GUARD RAIL
STA 108+16 RT - STA 108+87 LT
STA 107+80 RT - STA 108+60 RT

CONSTRUCT DRIVES
STA 101+88 LT W/ 5' PAVED APRON (8' WIDE)
STA 103+11 RT 2 WAY PAVED (24' WIDE)
STA 102+50 LT COMMERCIAL W/ 16' PAVED APRON
STA 103+23 LT PAVED WITH SIDEWALK RAMP (16' WIDE)

CONSTRUCT CONCRETE STAIRS
WITH METAL HAND RAIL
STA 103+45 LT (4' WIDE)

GATEPOSTS & STEEL FARMGATE
STA 103+27 - 70' RT



PLAN

SCALE 1" = 40'-0"

EXISTING BRIDGE INFORMATION
STEEL THRU TRUSS WITH T-BEAM APPROACH SPANS
SPANS (1 @ 200', (3) @ 47' - 40' OVERALL
BUILT 1928 AS FR26A
20' ROADWAY, 5' SIDEWALK UPSTREAM SIDE
IRON AND CONCRETE RAIL

VT 14 CURVE 1

Radius:	1145.92
Delta:	31° 13' 54.44" Left
Degree of Curvature (Arc):	5° 00' 00.00"
Length:	624.64
Tangent:	320.29
Chord:	616.93
Middle Ordinate:	42.30
External:	43.92

PROJECT: ROYALTON	PROJECT NO.: BRZ 1444(22)
DESIGN FILE NAME: 89j099/structures/sj099bdr.dgn	PLOT DATE: 26-SEP-2000
IPARM FILE NAME: sj099id.i	SURVEY DATE: 9/91
SURVEYED BY: R. GILMAN	DRAWN BY: W.B. SYMONDS
SQUAD LEADER: C.P. WILLIAMS	SHEET: 11 OF 118