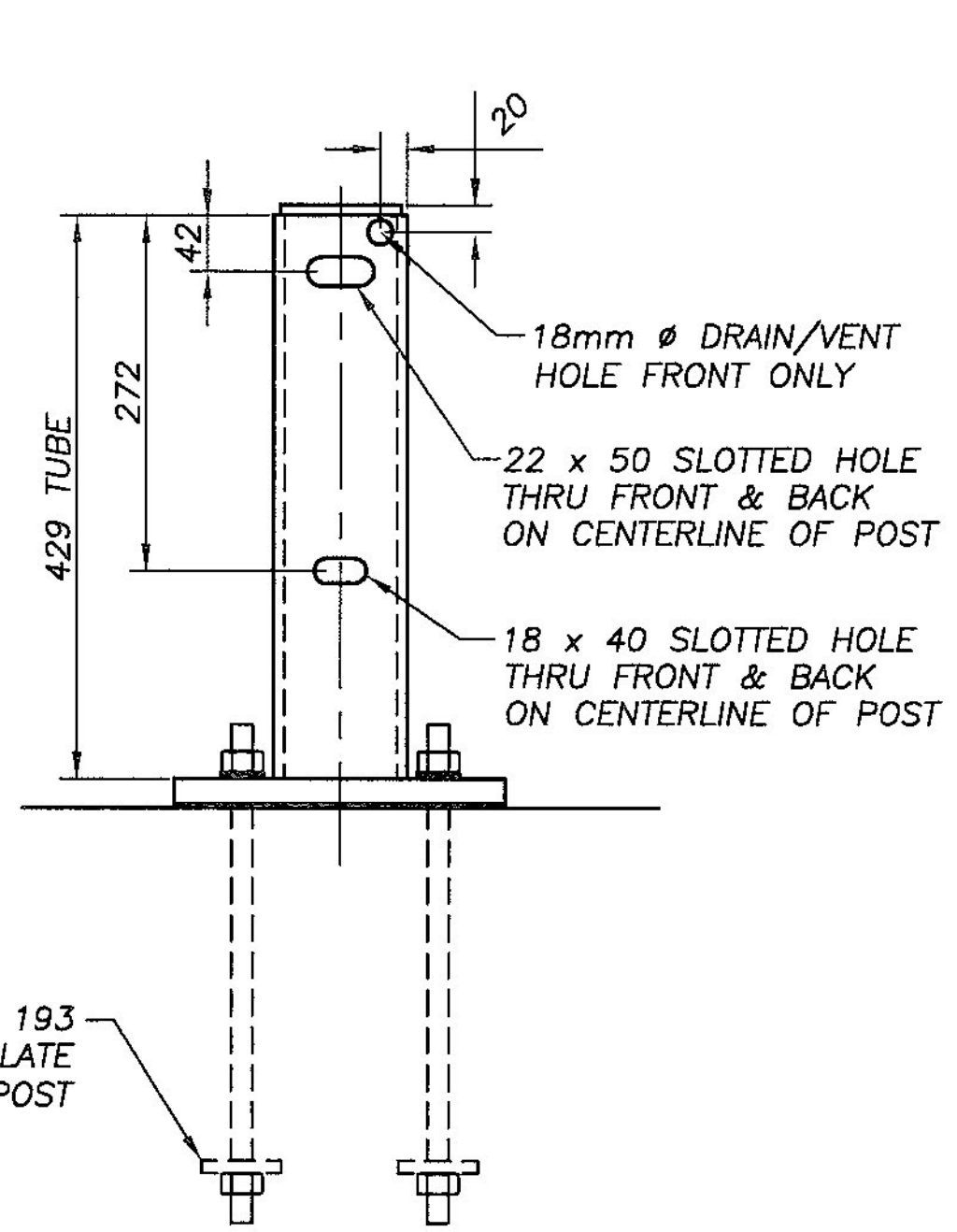
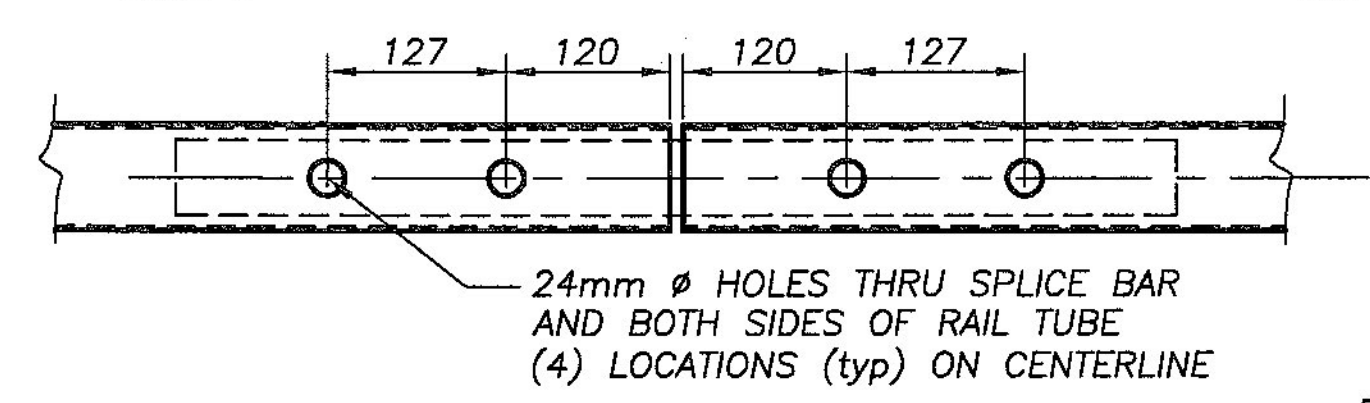


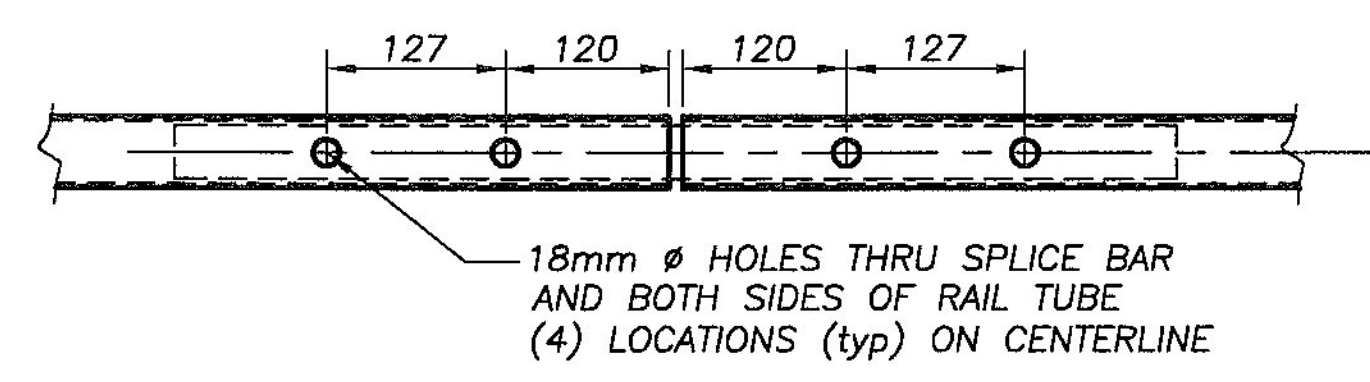
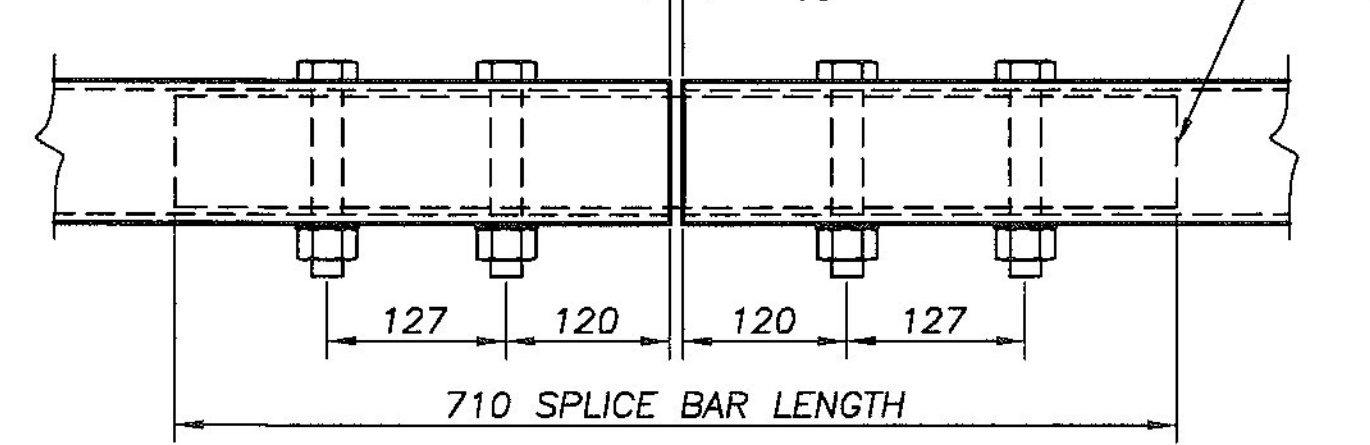
**RAIL POST DETAIL  
SIDE VIEW**



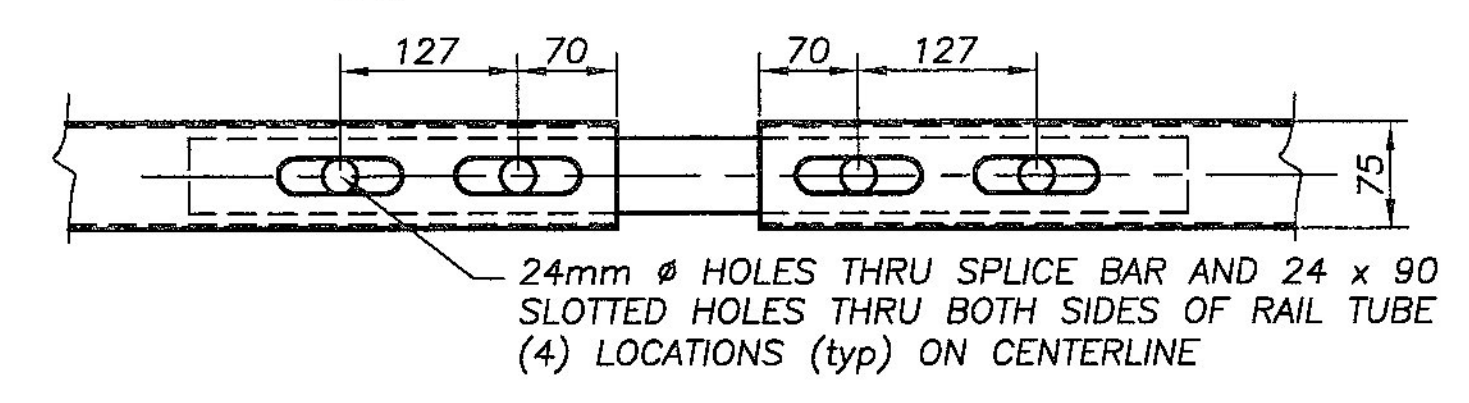
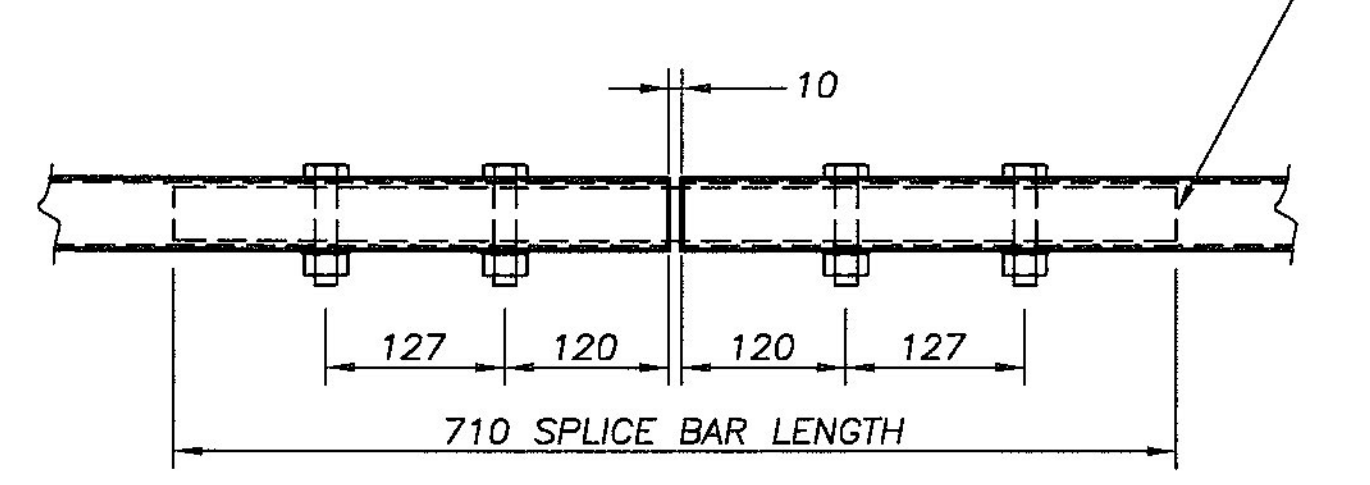
**RAIL POST DETAIL  
FRONT VIEW**



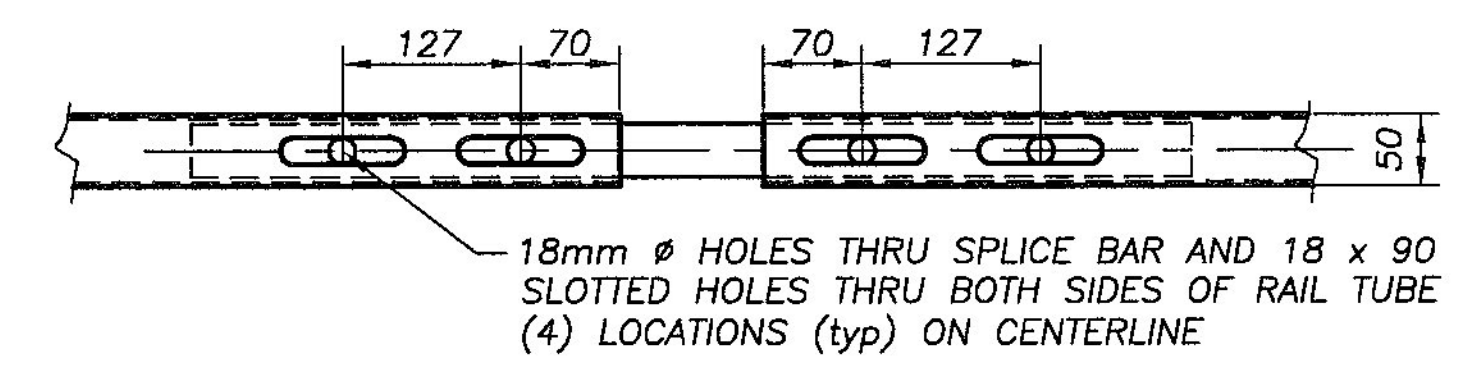
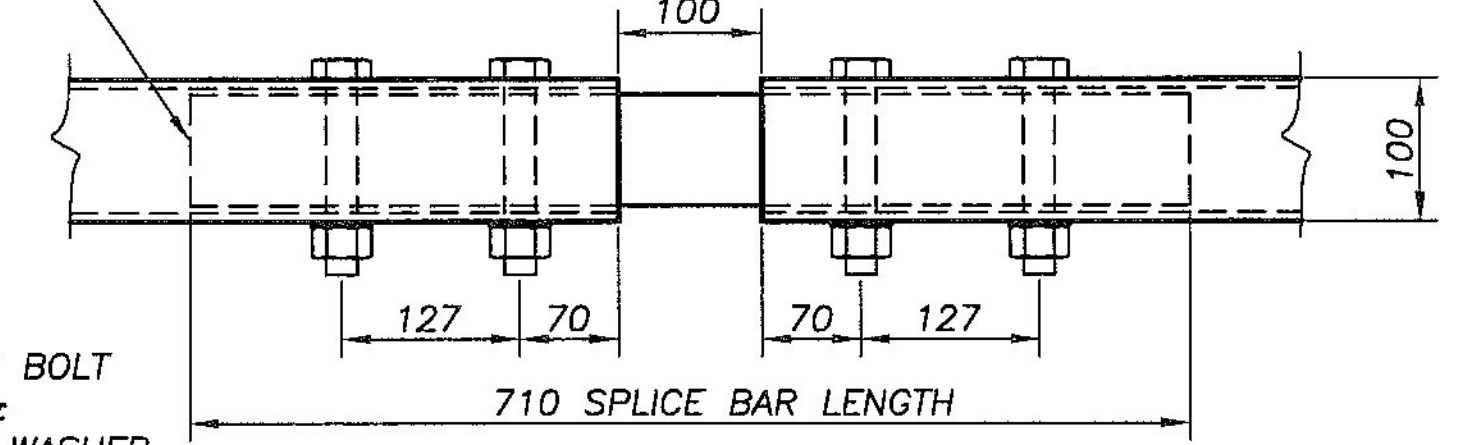
**SPlice JOINT DETAIL - TOP RAIL**



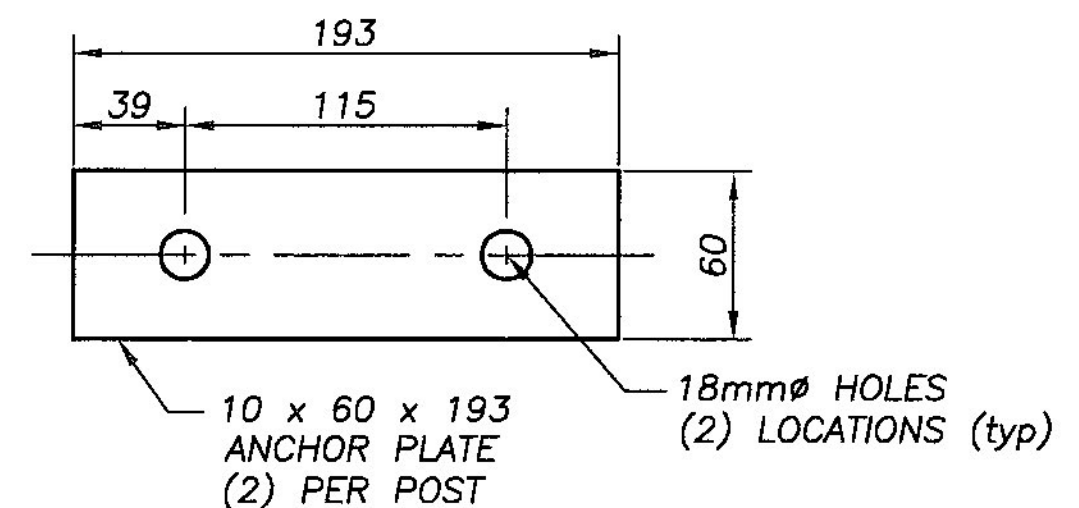
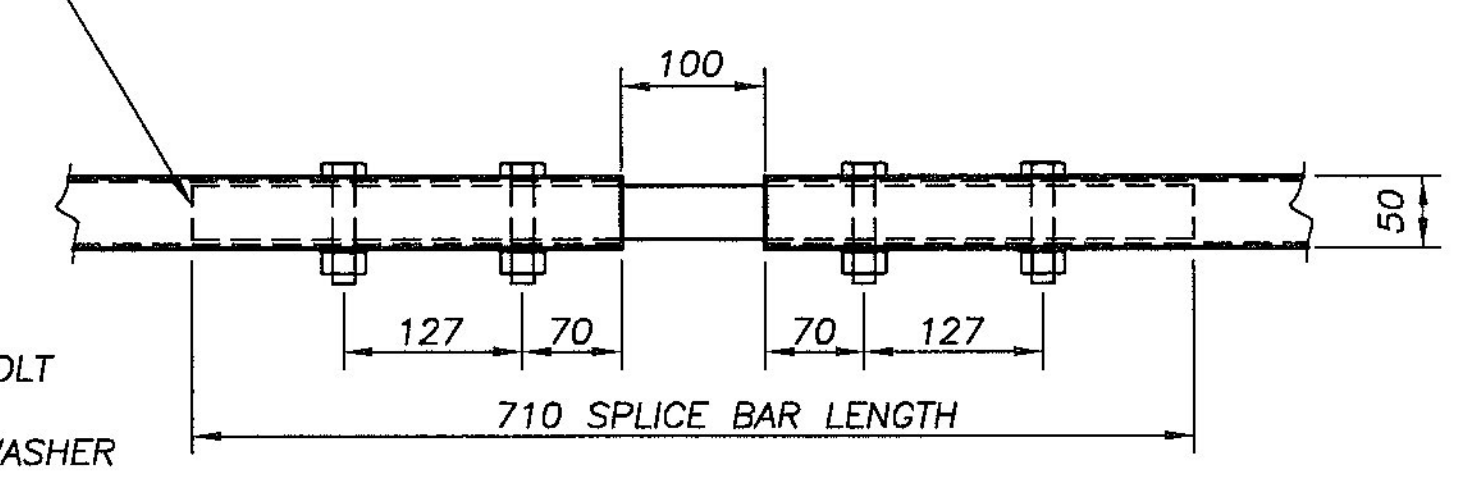
**SPlice JOINT DETAIL - BOTTOM RAIL**



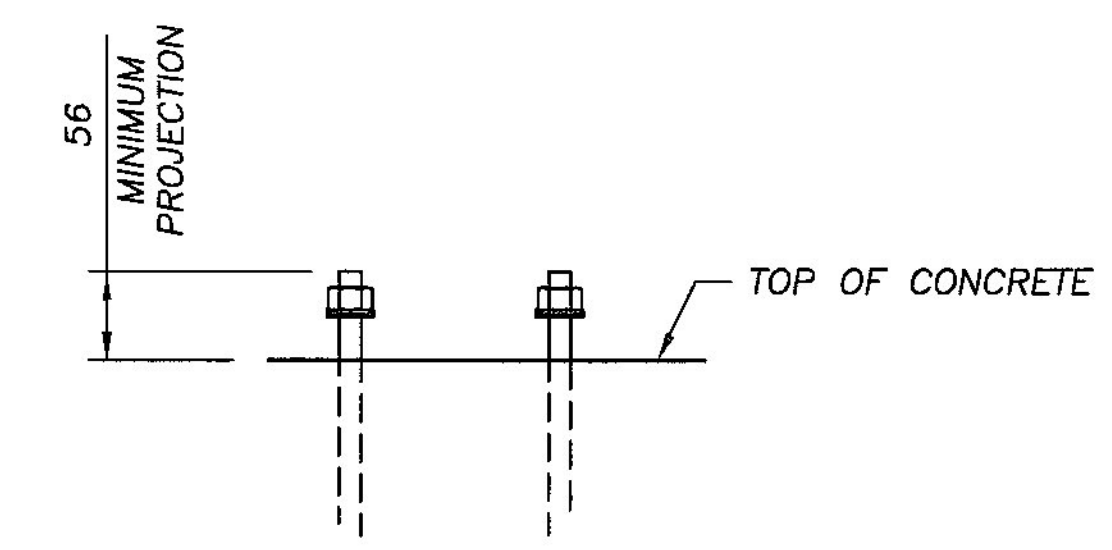
**EXPansion JOINT DETAIL - TOP RAIL**



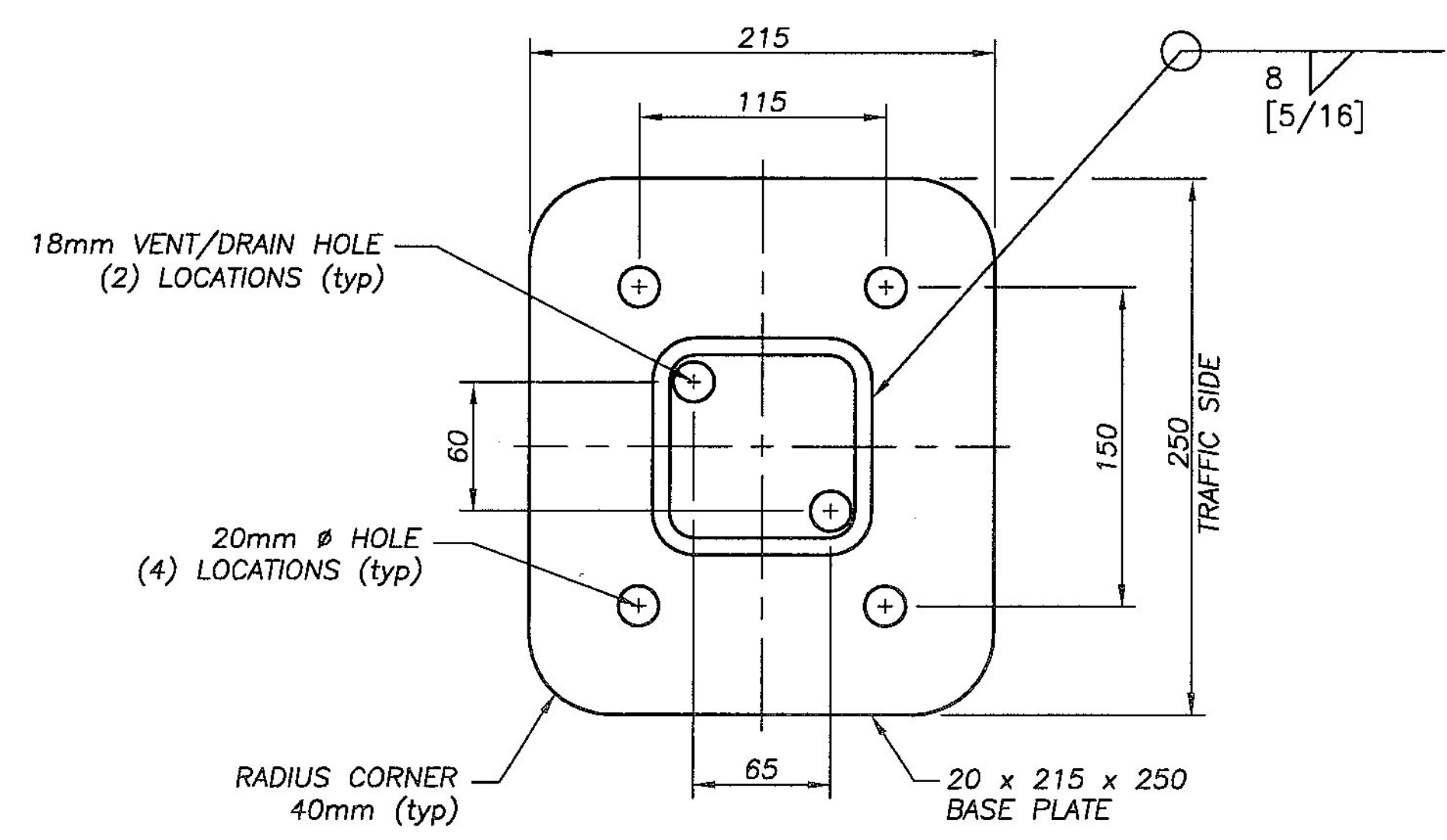
**EXPansion JOINT DETAIL - BOTTOM RAIL**



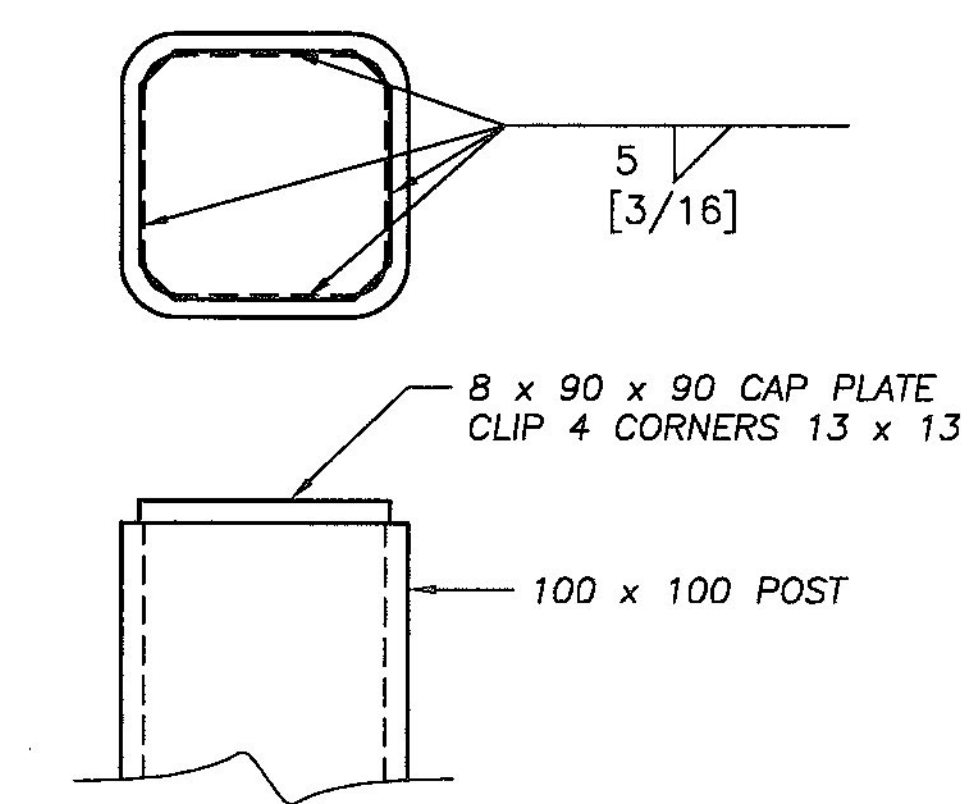
**ANCHOR PLATE DETAIL**



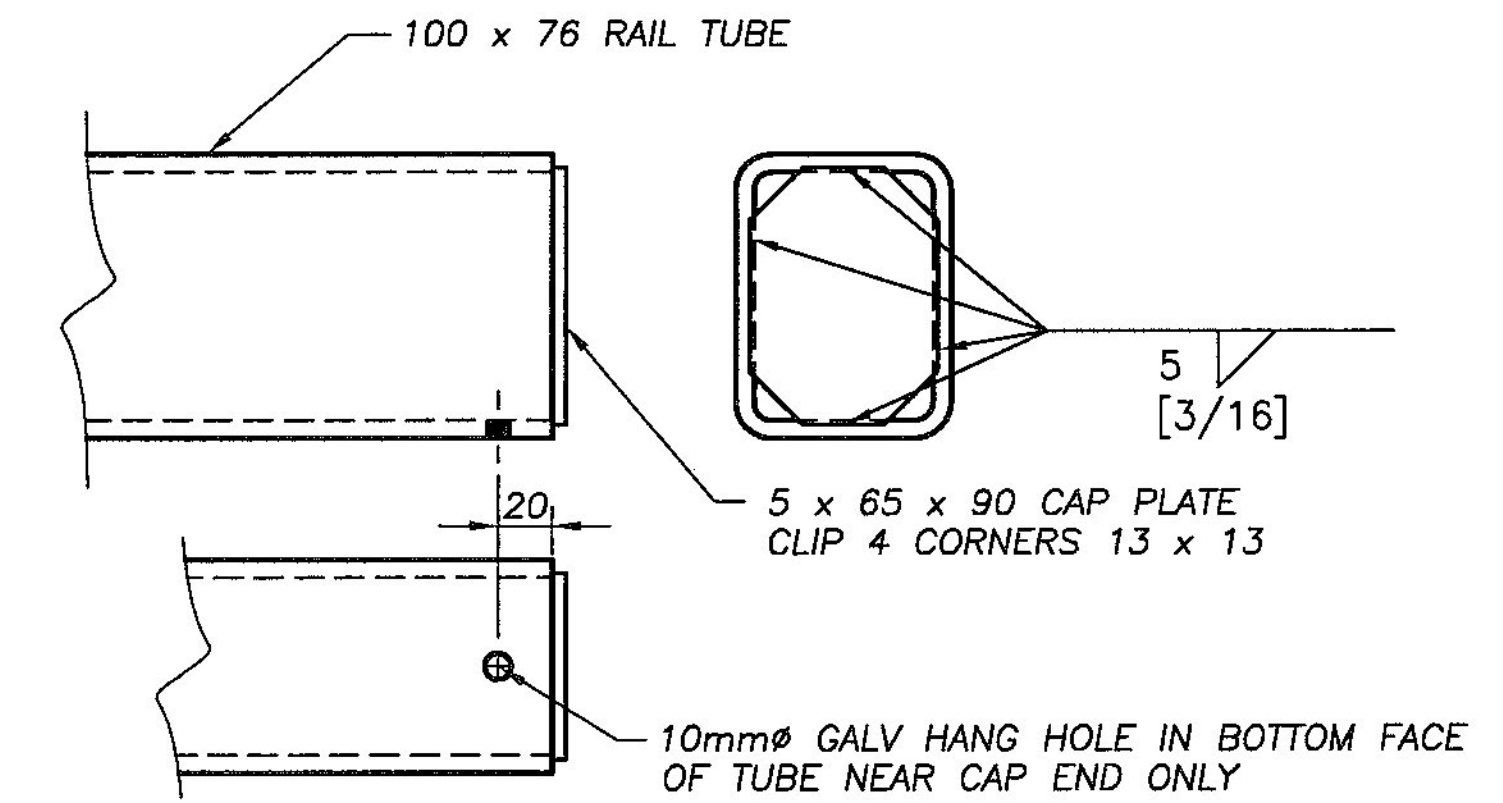
**ANCHOR INSTALLATION**



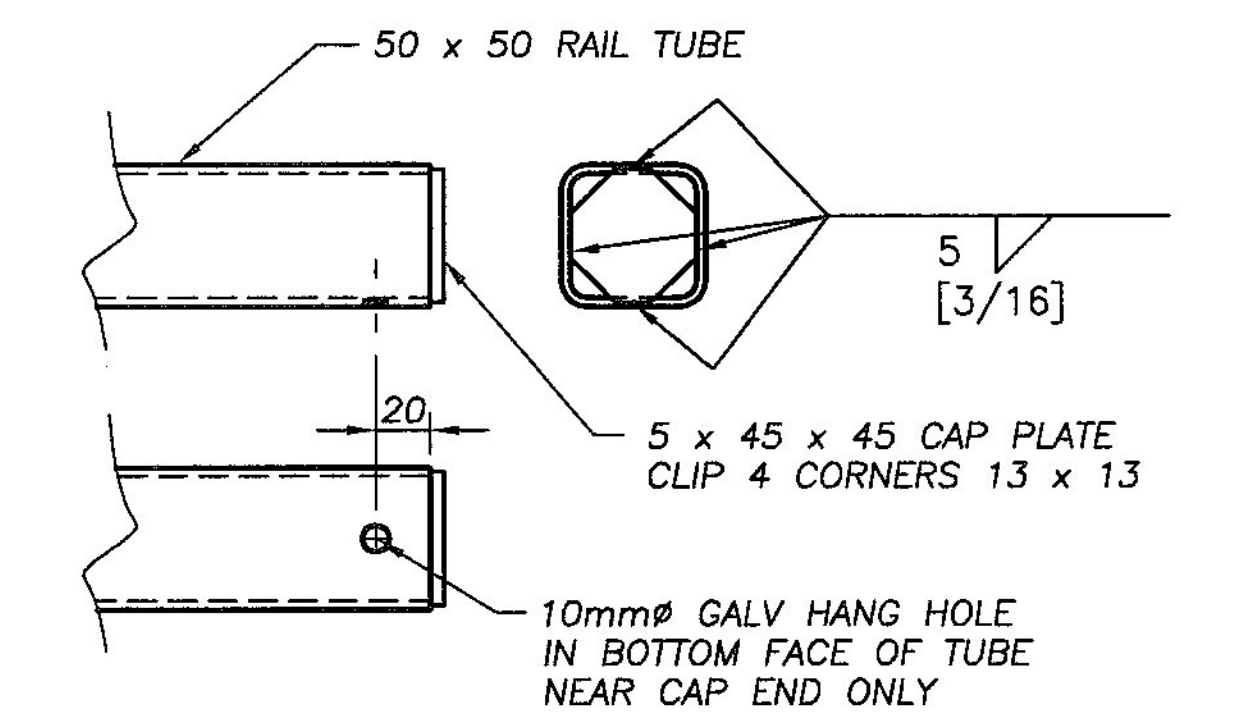
**SECTION THRU POST  
AT BASE PLATE**



**POST CAP DETAIL**



**UPPER RAIL END CAP DETAIL**



**LOWER RAIL END CAP DETAIL**

ALL DIMENSIONS ARE IN MILLIMETERS (mm) UNLESS NOTED OTHERWISE  
ENGLISH DIMENSIONS ARE SHOWN IN [ ] FOR REFERENCE CONVENIENCE

Vermont Agency of Transportation  
**RECEIVED**  
CK'D BY C.A.M. OK'D BY M.R.U.  
Dec. 05, 2012  
RESUBMIT APPROVED  
BY J. LACROIX DATE 12-31-2012

**HIGHWAY SAFETY CORP**  
GLASTONBURY, CT  
860-633-9445

ITEM 900.640 SPECIAL PROVISION (BRIDGE RAILING,  
GALVANIZED, STEEL TUBING/CONCRETE COMBINATION)  
ROUTE No. TH 2 / BRIDGE #32  
TOWN OR READSBORO, COUNTY OF BENNINGTON  
BRF 0105 (3)

CERTIFIED FABRICATOR  
HSD JOB NO. 1905  
SHEET NO. 2 of 2

GENERAL CONTRACTOR  
SUB CONTRACTOR LAFAYETTE  
DRAWN PAR CHECKED DATE 11-20-12 SCALE NONE SIZE D