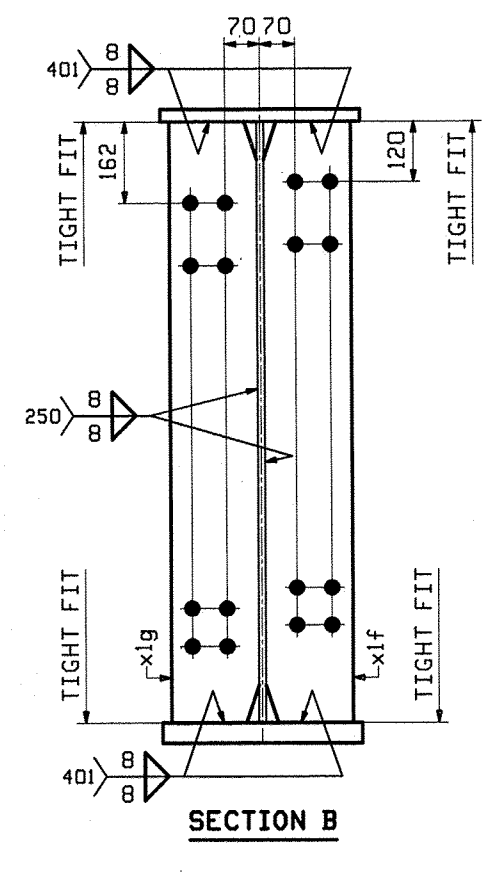
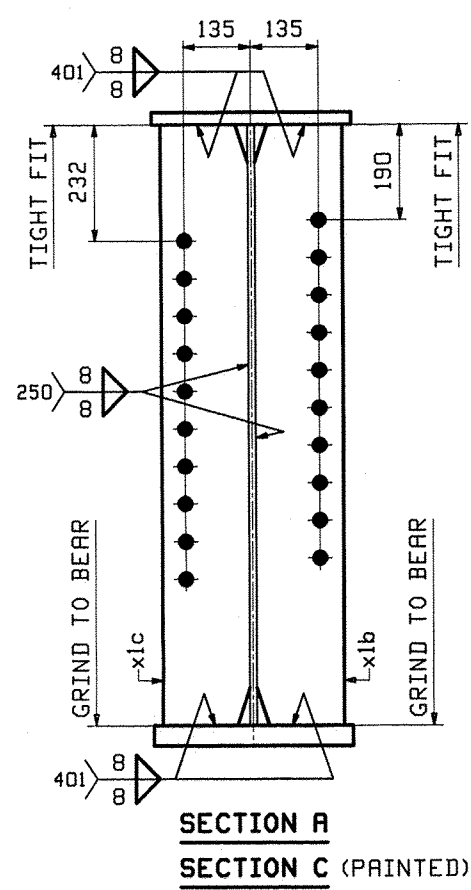


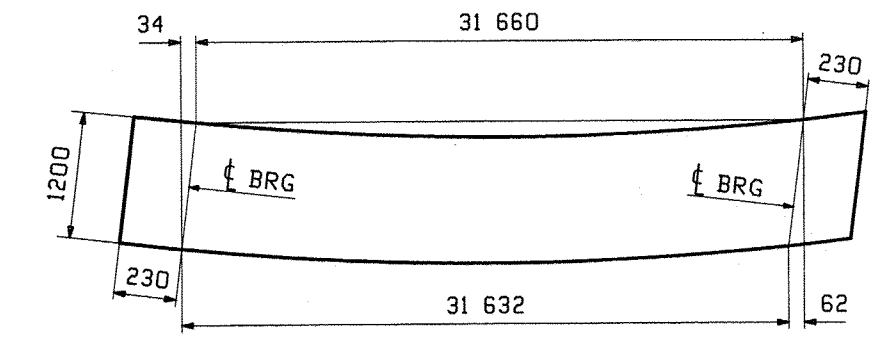
ONE - GIRDER - 3G4

FOR GIRDER STANDARD DETAILS SEE DRAWING XI.
 FOR CAMBER & FLANGE DIAGRAMS SEE DRAWING CI.
 FOR GENERAL NOTES SEE DRAWING GNI.
 T2 DENOTES MATERIAL SUBJECT TO CHAPPY V-NOTCH TESTING.

NOTE "B"
 NO PRINT AREA ALONG BOTTOM FLANGE.
 (FIELD WELDED SOLE PLATE) (SEE SECTION P ON GNI).



JOB NO.		DRAWING NO.		REV.			
519		3					
ITEM	QTY	MARK	MATERIAL	LENGTH	REMARKS	WT	PROCUREMENT NOTES
3G4	1		GIRDER			1189 #	
1	1	wa	PL 14x1200	12 203	M270M-345MTZ	1879 #	
1	1	wb	PL 14x1200	19 954	M270M-345MTZ	2832 #	
1	1	ta	PL 25x400	19 888		1540 #	
1	1	tb	PL 25x400	12 232		860 #	
1	1	ba	PL 40x400	19 888	M270M-345MTZ	2488 #	
1	1	bb	PL 40x400	12 204	M270M-345MTZ	1533 #	
2	2	xlb	PL 16x175	1 200	TIE	53 #	
2	2	xlc	PL 16x175	1 200	TIE	53 #	
2	2	xlf	PL 14x175	1 200	TIE	117 #	
2	2	xlg	PL 14x175	1 200	TIE	117 #	



REV.	DATE	REMARKS	DWN	CHK	APVL	SHOP
MATERIAL:		SURFACE PREP. & PRINT:		HOLES:		SHOP BOLTS:
M270M-345K(UN)		SEE DWG GNI		15-ø 16		NONE
DESCRIPTION: GIRDER - 3G4						
CASCO BAY STEEL STRUCTURES, INC.						
1 WALLACE AVE.			PHONE (207) 780-6722		TENOR	
SOUTH PORTLAND, ME 04106			FAX (207) 780-6726		SHEP	
STRUCTURE: READSBORO VI. ROUTE TH-2 OVER WEST BRANCH OF DEERFIELD RIVER				DRWN:	JTB	DATE: 06/23
LOCATION: READSBORO, VERMONT				CHKD:	WJL	DATE: 07/10
PROJ NO.	BRF 0105(3)	JOB NO.	519	DWG NO.	3	REV. Δ
CUSTOMER:	RENAUD BROS.					

JUL 23 2012
 Received
 JUL 23 2012