

GENERAL NOTES

CONSTRUCTION SPECIFICATIONS

- 1) ALL MATERIAL AND WORKMANSHIP TO BE IN ACCORDANCE WITH THE STATE OF VERMONT AGENCY OF TRANSPORTATION STANDARD SPECIFICATIONS FOR CONSTRUCTION DATED 2006 WITH LATEST REVISIONS AND THE AASHTO LRFD BRIDGE CONSTRUCTION SPECIFICATIONS FOR HIGHWAY BRIDGES, 5TH EDITION AND ITS LATEST REVISIONS.

MATERIAL SPECIFICATIONS

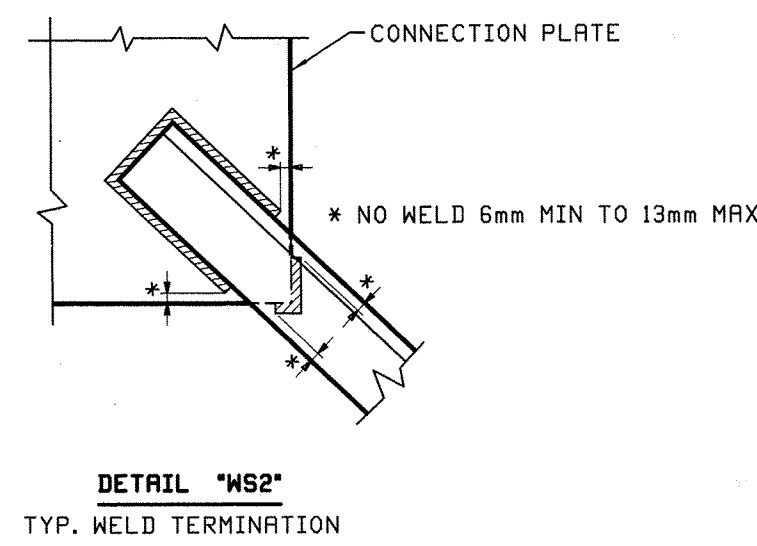
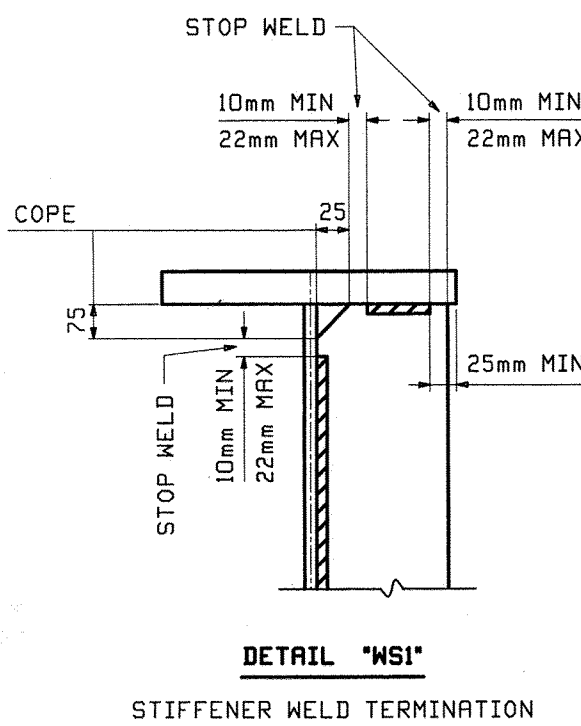
- 1) ALL STRUCTURAL STEEL SHALL CONFORM TO AASHTO M270M GRADE 345W (UN).
- 2) MATERIAL NOTED "CVN" OR "T2" ON DETAIL DRAWINGS SHALL BE CHARPY V-NOTCH TESTED IN ACCORDANCE WITH THE REQUIREMENTS OF VERMONT STANDARD SPECIFICATIONS SECTION 714.01.
- 3) HIGH STRENGTH BOLTS:
-ASTM A325 (AASHTO M164) TYPE 3 W/ A563 GRADE DH3 NUTS & F436W WASHERS IN NON-PAINTED AREAS.
-ASTM A325 (AASHTO M164) TYPE 1 (GALV.) W/ A563 GRADE DH NUTS & F436 WASHERS IN PAINTED AREAS AND FIELD CONNECTIONS. *Mechanically Galvanized*
- 4) BOLTS & NUTS SHALL BE ROTATIONAL CAPACITY TESTED.
- 5) DO NOT MIX NUTS & BOLTS FROM DIFFERENT CONTAINERS UNLESS ALL BOLTS & NUTS HAVE THE SAME LOT NUMBER.
- 6) ALL TYPE 1 BOLTS SHALL BE GALVANIZED PER AASHTOM M232M/M232.

FABRICATION

- 1) ALL HOLES SHALL BE PUNCHED OR DRILLED FULL SIZE (UN).

WELDING

- 1) THE CONFIGURATION OF THE WELD JOINTS AND ALL WELDING PROCEDURES SHALL BE IN ACCORDANCE WITH AASHTO/AWS D1.5-08-2010 BRIDGE WELDING CODE AND IN ADDITION TO SPECIFICATIONS SHOWN ABOVE. ALL WELDING WILL BE DETAILED TO PRE-QUALIFIED JOINTS, UNLESS PROHIBITED BY THE DESIGNER.
- 2) WELDING OF MAIN LOAD CARRYING MEMBERS AND ATTACHMENTS SHALL BE PERFORMED USING THE AUTOMATIC SUBMERGED ARC & SHIELDED METAL ARC PROCESSES. ALL WELDS ARE CONTINUOUS U.N.
- 3) NON DESTRUCTIVE TESTING OF WELDS SHALL BE IN ACCORDANCE WITH THE REFERENCED SPECIFICATION.
- 4) SEE DETAILS "WS1" & "WS2" ON THIS DRAWING FOR WELD TERMINATION DETAILS.

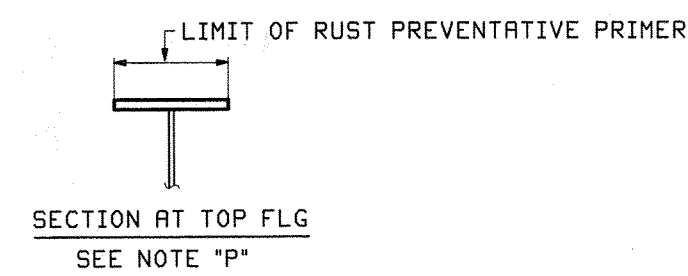
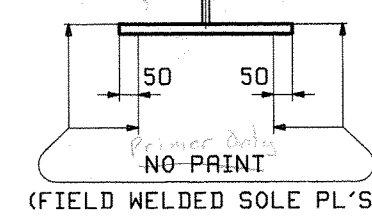
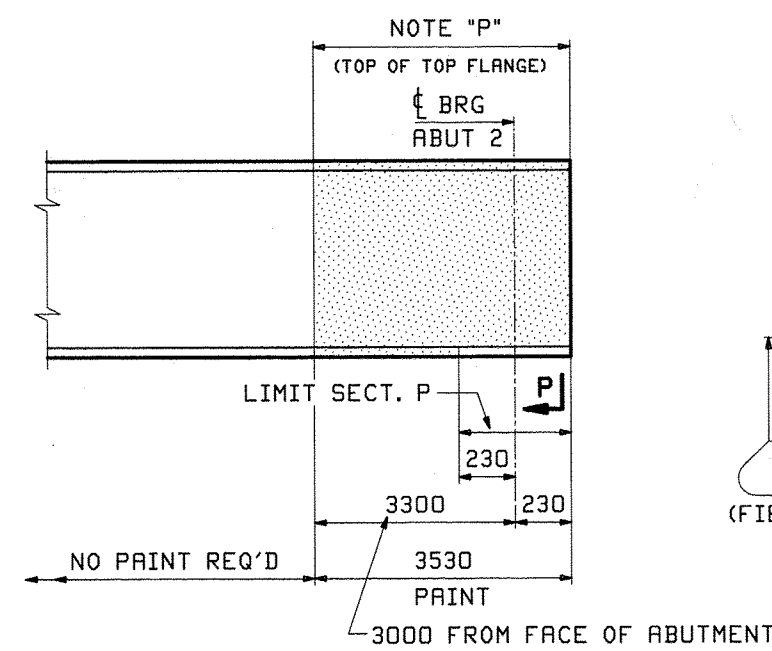


FIELD CONNECTIONS

- 1) ALL FIELD CONNECTIONS SHALL BE MADE WITH 7/8" DIAMETER HIGH STRENGTH A-325 BOLTS TYPE 3, EXCEPT IN PAINTED AREAS SHALL BE A325 TYPE 1 GALV. INSTALLED PER SECTION 506.19(c). SEE DWG E1 FOR FIELD BOLT SIZES.
- 2) BOLTS SHALL HAVE HEAVY HEX NUT, HEAVY HEX HEAD, AND AT LEAST ONE FLAT WASHER EACH. WASHER TO BE PLACED UNDER TURNED ELEMENT.
- 3) PIECE MARKS WILL BE LOCATED AS SHOWN ON ERECTION DRAWINGS.

PAINTING

- 1) THE ENDS OF GIRDERS & DIAPHRAGMS AT ABUTMENT 2 SHALL BE PAINTED AS SHOWN IN SKETCH "PI", (UN).
- 2) THE PAINT SYSTEM AND ITS APPLICATION SHALL CONFORM TO SECTIONS 513 AND 708 OF THE STANDARD SPECIFICATIONS.
- 3) PAINT SYSTEM SHALL BE AS FOLLOWS:
PRIMER: CARBOLINE 859 ORGANIC ZINC RICH PRIMER - 3.0 - 5.0 MILS DFT.
INTERMEDIATE: CARBOLINE 888 EPOXY 4.0-6.0 MILS DFT.
TOPCOAT: CARBOLINE 133 LH ALIPHATIC POLYURETHANE - 2.0-4.0 MILS DFT.
TOPCOAT COLOR: BROWN FED. COLOR #20059. - SUBMIT COLOR SAMPLE TO DEPARTMENT.
- 4) PRIME COAT ONLY WITHIN 3" OF OPEN HOLES IN PAINTED AREAS.
- 5) BROWN GREASE, CONFORMING TO SUBSECTION 708.04, SHALL BE APPLIED PER SUBSECTION 513.06 TO THE SPECIFIED SURFACES WITHIN THE PAINTED ZONE.



NOTE "P"
PAINT WITH A LIGHT RUST-PREVENTATIVE COAT OF PRIMER (SEE TYPICAL SECTION AT TOP FLG).

NOTE TO ENGINEER:
THESE NOTES ARE NOT INTENDED TO BE ALL INCLUSIVE AND COMPLIANCE WITH RELEVANT SPECIFICATIONS REMAIN UNCHANGED.

REV.	DATE	REMARKS	DWN	CHK	APVL	SHOP
0						
MATERIAL:		SURFACE PREP. & PAINT:		HOLES:		SHOP BOLTS:
DESCRIPTION: GENERAL NOTES						
CASCO BAY STEEL STRUCTURES, INC. 1 WALLACE AVE. PHONE (207) 780-6722 SOUTH PORTLAND, ME 04106 FAX. (207) 780-6726						
STRUCTURE: READSBORO VT. ROUTE TH-2 OVER WEST BRANCH OF DEERFIELD RIVER			DRAWN: JTB	DATE: 06/22		
LOCATION: READSBORO, VERMONT			CHKD: WJL	DATE: 07/10		
PROJ NO. BRF 0105(3)	JOB NO. 519		DWG NO. GNI		REV. 1	
CUSTOMER: RENAUD BROS.						

RECEIVED
JUL 23 2012
JAG