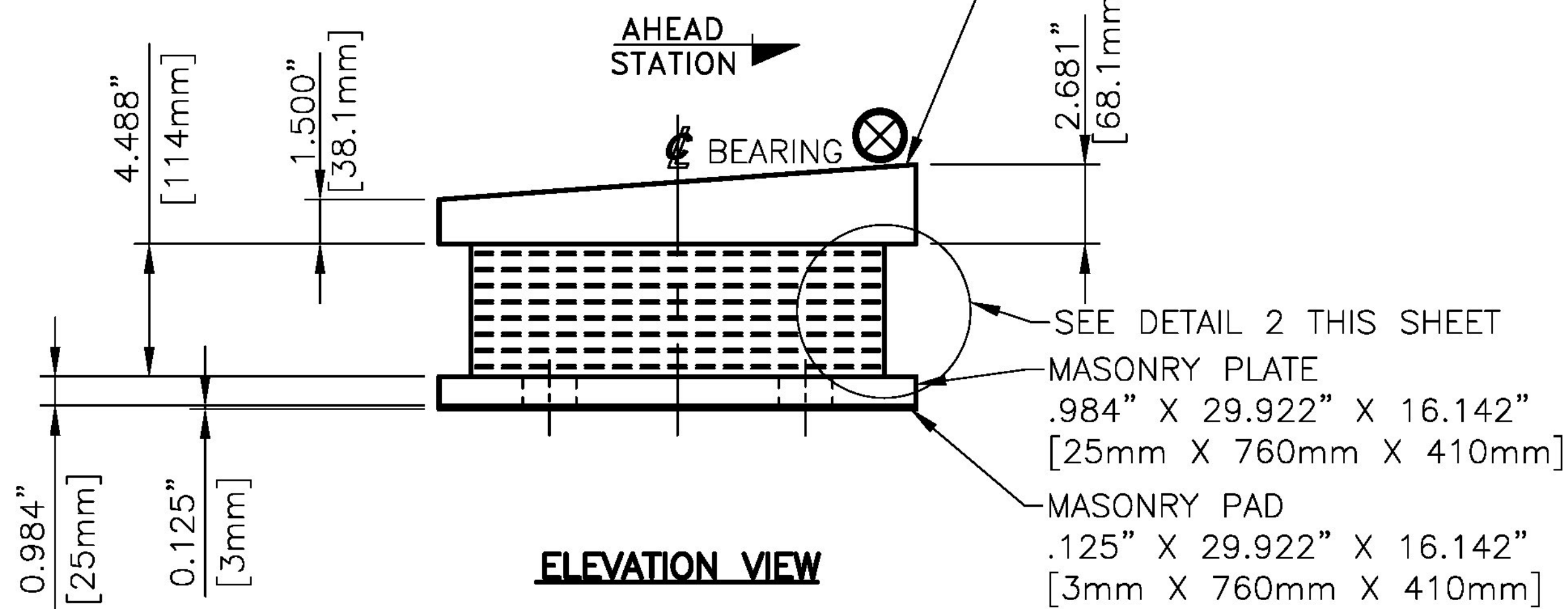


**PLAN VIEW**

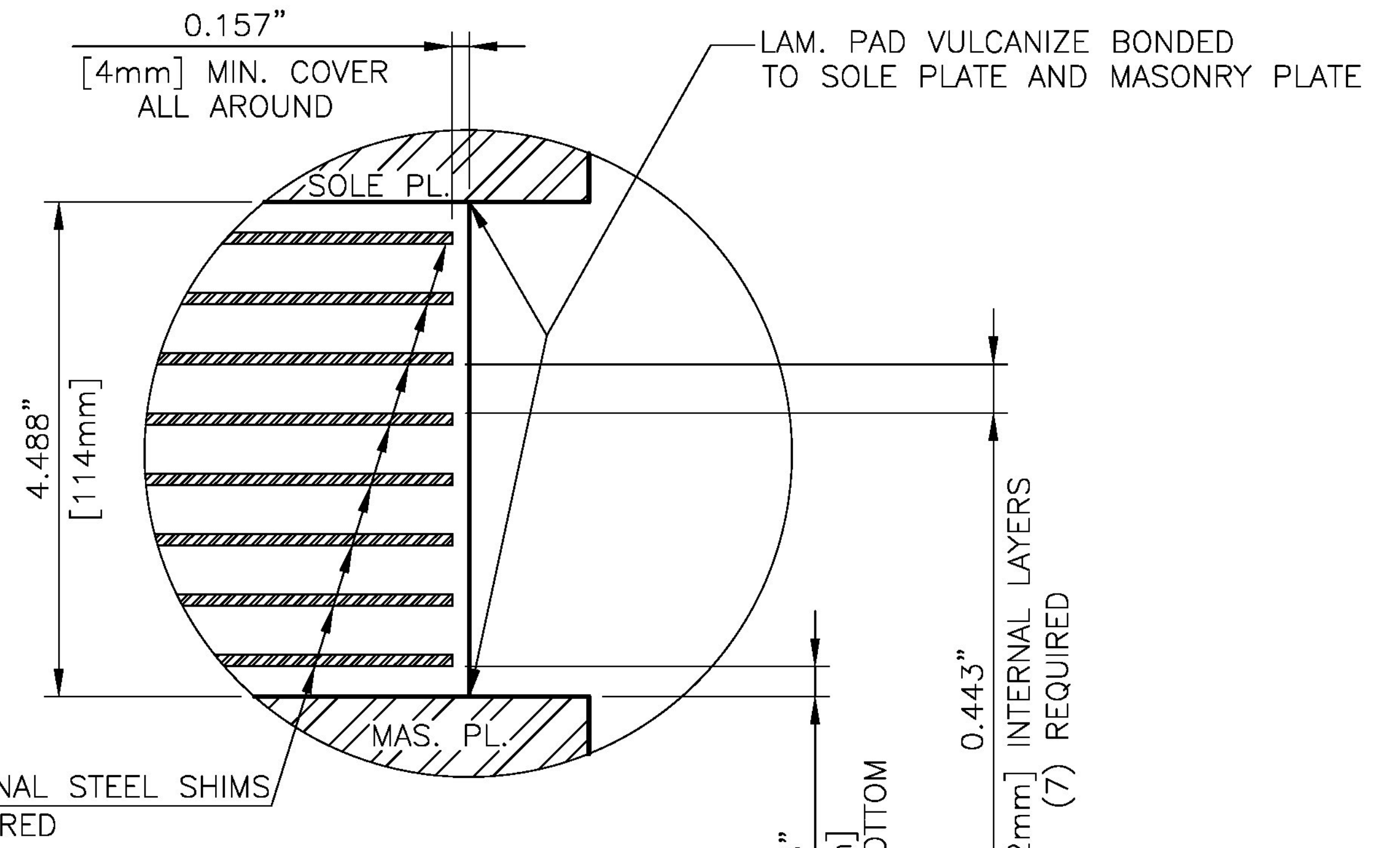


**ELEVATION VIEW**

**EXPANSION ELASTOMERIC BEARING ASSEMBLY**

**EBA1**

LOCATED @ ABUTMENT 2 GIRDERS 1-5  
 RETAINER ANGLES NOT SHOWN FOR CLARITY  
 SEE SHEET 4 OF 4 FOR DETAILS  
 (5) TOTAL REQUIRED



**DETAIL 2**

4.488" X 14.960" X 13.976"  
 [114mm X 380mm X 355mm]  
 LAMINATED ELASTOMERIC BEARING PAD  
 50 DUROMETER NATURAL RUBBER  
 VULCANIZED TO SOLE PLATE & MASONRY PLATE  
 (5) REQUIRED

**DESIGN LOADS (UNFACTORED)**

R.D.L. = 89.5kips [400kN]  
 R.L.L. = 79.5kips [354kN]

APPROVER PLEASE VERIFY

ok

Vermont Agency of Transportation  
**RECEIVED**

CK'D BY M.R.U. OK'D BY J.A.G.

Sept. 5, 2012

RESUBMIT APPROVED AS NOTED  
 BY J. LACROIX DATE 09-20-2012

SEE NOTES ON SHEET GN1 OF 1

STATE OF VERMONT  
 AGENCY OF TRANSPORTATION  
 TOWN OF READSBORO  
 ROUTE NO: TH 2, FAS 105,  
 (MAJOR COLLECTOR) BRIDGE #32

STATE	COUNTY	CONTROL NO.
VT.	BENNINGTON	N/A

PROJ. ID NO.: BRF 0105 (3)

**DYNAMIC RUBBER  
 LAM. ELASTOMERIC BEARING ASS'YS**

**Cosmec** 1501 ROCKY RIDGE ROAD  
 P.O. BOX 2159  
 ATHENS, TEXAS 75751

SCALE: NONE	DRAWN BY: RP	CHECKED BY: SL
	DATE: 8/29/12	DATE: 8/31/12

SHEET 2 OF 4 **JOB NO.: 11621**

CUSTOMER: RENAUD BROTHERS, INC. DRAWING NUMBER: 11621-D2 REV: 0

REV.	DESCRIPTION	BY	DATE	CK'D	DATE