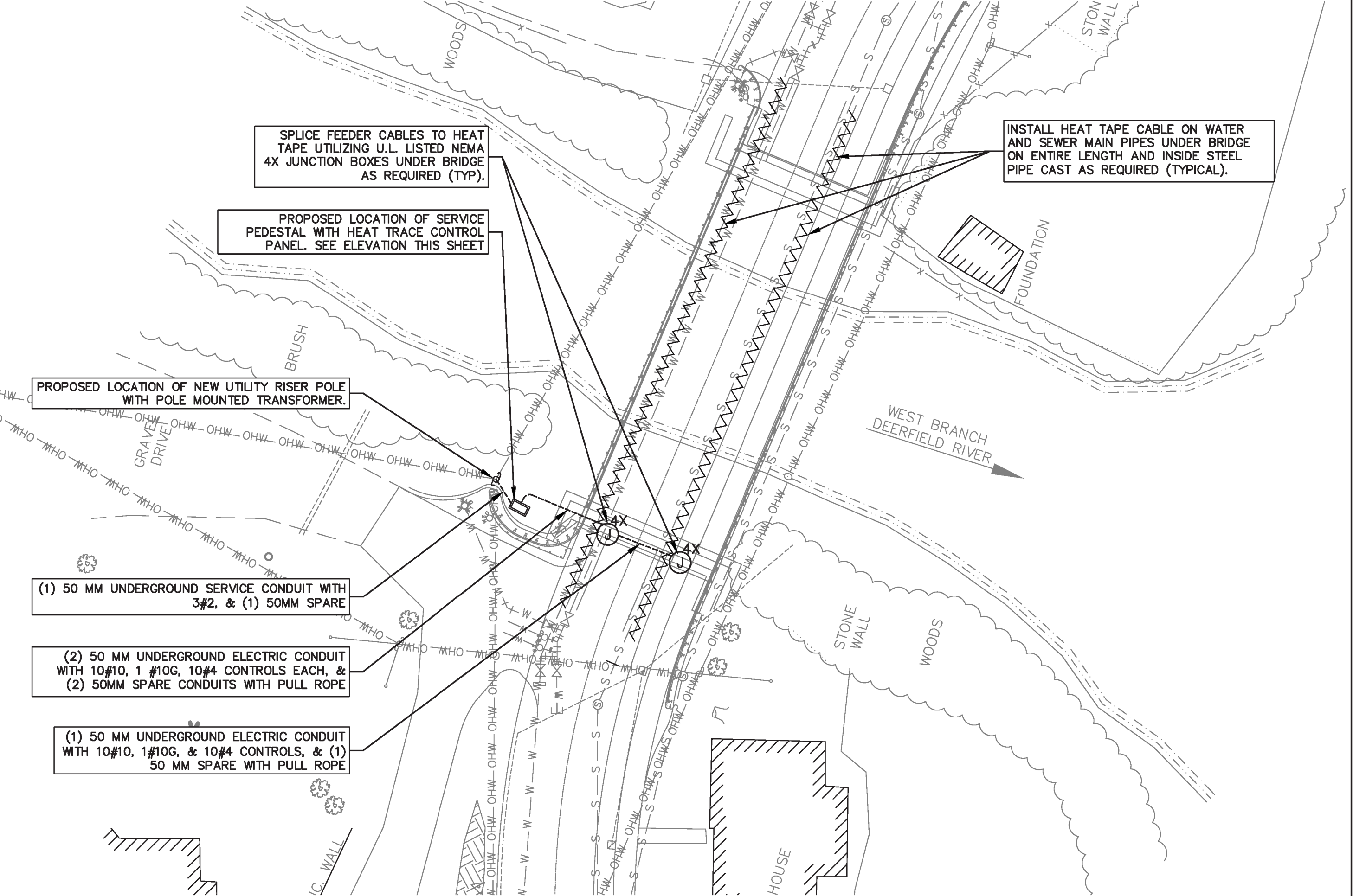
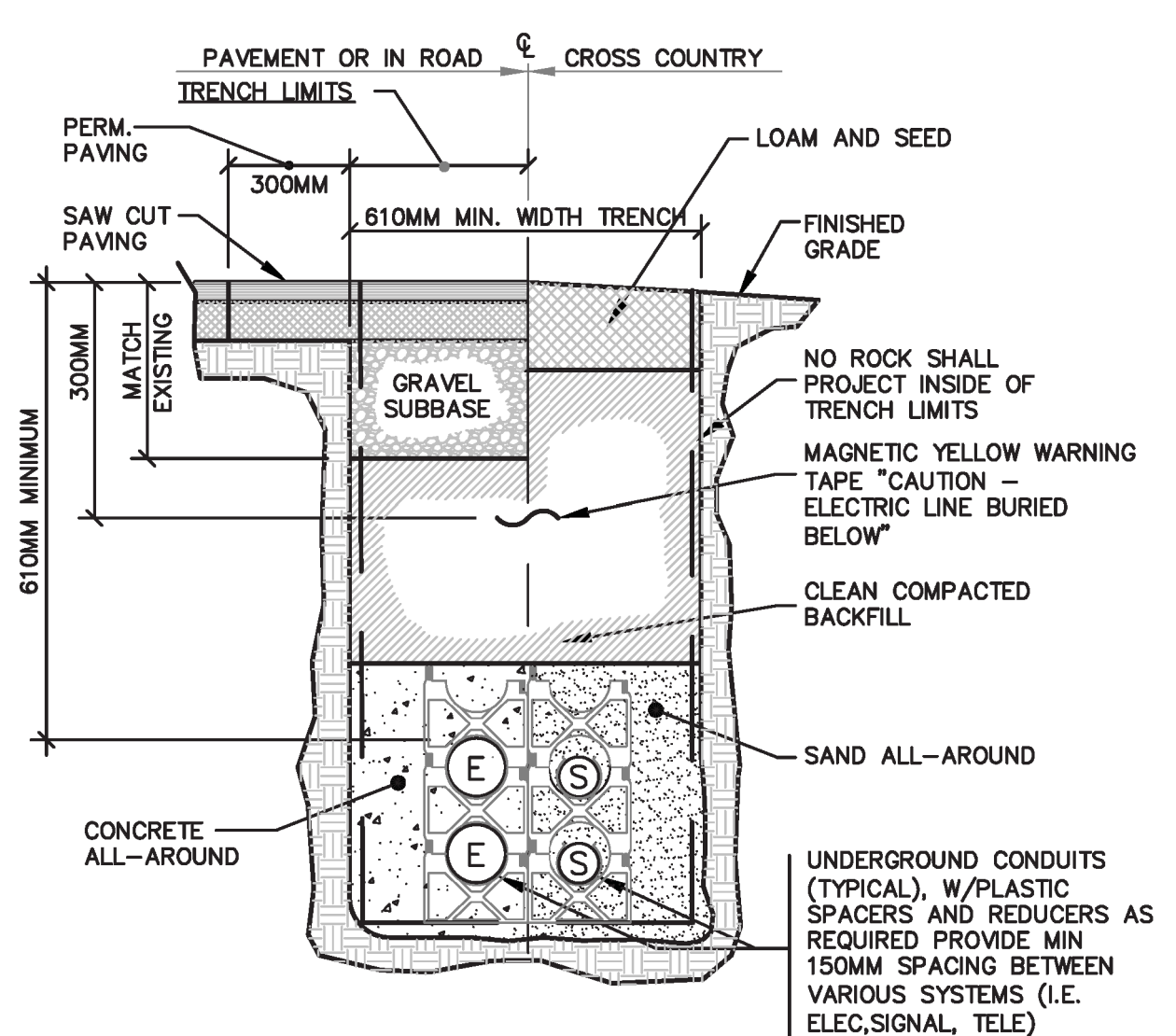


ELECTRICAL SERVICE PEDAESTAL WITH HEAT TRACE SYSTEM ELEVATION 1
SCALE: NONE



DEERFIELD RIVER CROSSING ELECTRICAL SITE PLAN 2
SCALE: 1:250



- NOTE:**
- REFER TO ELECTRICAL SITE PLAN & DUCT BANK SCHEDULE FOR SPECIFIC REQUIREMENTS.
 - REFER TO VTRANS SPECS FOR ALL EARTHWORK MATERIALS AND METHODS.
 - REFER TO STATE OF VERMONT PLANS AND SPECIFICATIONS FOR ADDITIONAL ROADWAY, SUB-BASE AND BACKFILL REQUIREMENTS.

SUBSURFACE WORK NOTE:
THE LOCATIONS OF EXISTING UNDERGROUND UTILITIES ARE SHOWN IN APPROXIMATE LOCATIONS AND HAVE NOT BEEN INDEPENDENTLY VERIFIED BY THE OWNER OR IT'S REPRESENTATIVE. THE CONTRACTOR SHALL DETERMINE THE EXACT LOCATION OF ALL EXISTING UTILITIES PRIOR TO COMMENCING WORK, AND AGREES TO BE FULLY RESPONSIBLE FOR ANY AND ALL DAMAGES WHICH MIGHT BE OCCASIONED BY THE CONTRACTOR'S FAILURE TO EXACTLY LOCATE AND PRESERVE ANY AND ALL UNDERGROUND UTILITIES. THE CONTRACTOR SHALL BE RESPONSIBLE TO CONTACT "DIG SAFE" AT 1(888)344-7233 (1(888)DIG-SAFE) AND COORDINATE ACTIVITIES PRIOR TO ANY EXCAVATIONS.

TYPICAL ELECTRICAL TRENCHING DETAIL 4
SCALE: NONE

- ELECTRICAL SITE LEGEND**
- UTILITY POLE
 - PROPOSED OVERHEAD PRIMARY CABLE
 - EXISTING UNDERGROUND PRIMARY CONDUIT
 - EXISTING UNDERGROUND ELECTRICAL CONDUIT
 - EXISTING UNDERGROUND SIGNAL CONDUIT
 - PROPOSED NEW UNDERGROUND ELECTRICAL CONDUIT
 - PROPOSED NEW UNDERGROUND SIGNAL CONDUIT
 - PROPOSED NEW JUNCTION BOX, 4X INDICATES NEMA TYPE

- NOTES:**
- PROVIDE RIGID GALVANIZED SWEEPS ON ALL 90° TURNS.
 - UTILIZE RIGID GALVANIZED STEEL CONDUIT & SWEEPS AT THE RISER POLE FOR PRIMARY SECONDARY & TELEPHONE CONDUITS, GROUND AS REQUIRED.
 - COORDINATE NEW UNDERGROUND CONDUIT LOCATION WITH EXISTING UNDERGROUND ELECTRIC CONDUIT, PROCESS PIPING AND STRUCTURES PRIOR TO EXCAVATION.
 - REPAIR EXISTING PAVED AND GRASSED AREAS TO CONDITION EXISTING PRIOR TO EXCAVATION.
 - ALL UTILITY COMPANIES, PUBLIC AND PRIVATE, MUST BE NOTIFIED, INCLUDING THOSE IN CONTROL OF UTILITIES NOT SHOWN ON THIS PLAN, PRIOR TO DESIGNING, EXCAVATING, BLASTING, INSTALLING, BACKFILLING, GRADING, PAVEMENT RESTORING OR REPAVING.
 - REFER TO DETAIL 4/E1 FOR TYPICAL TRENCHING DETAIL FOR ELECTRICAL/SIGNAL CONDUITS.

SAME PLAN USED FOR RELOCATED WATER AND SEWER LINES

FOR CONSTRUCTION

REVISIONS	DATE	COMMENTS

TH 2, FAS 105
BRIDGE #32

ELECTRICAL SITE PLAN WITH DETAILS

READSBORO, VERMONT

Project #	416006
Project Mgr.	NRJ
Design by	JWC
Drawn by	JWC
Reviewed by	SMR
Approved by	SMR
Date	MAY 2011
Scale	