

REVISIONS	DATE	COMMENTS	BY

TH 2, FAS 105
BRIDGE #32

GENERAL DETAILS

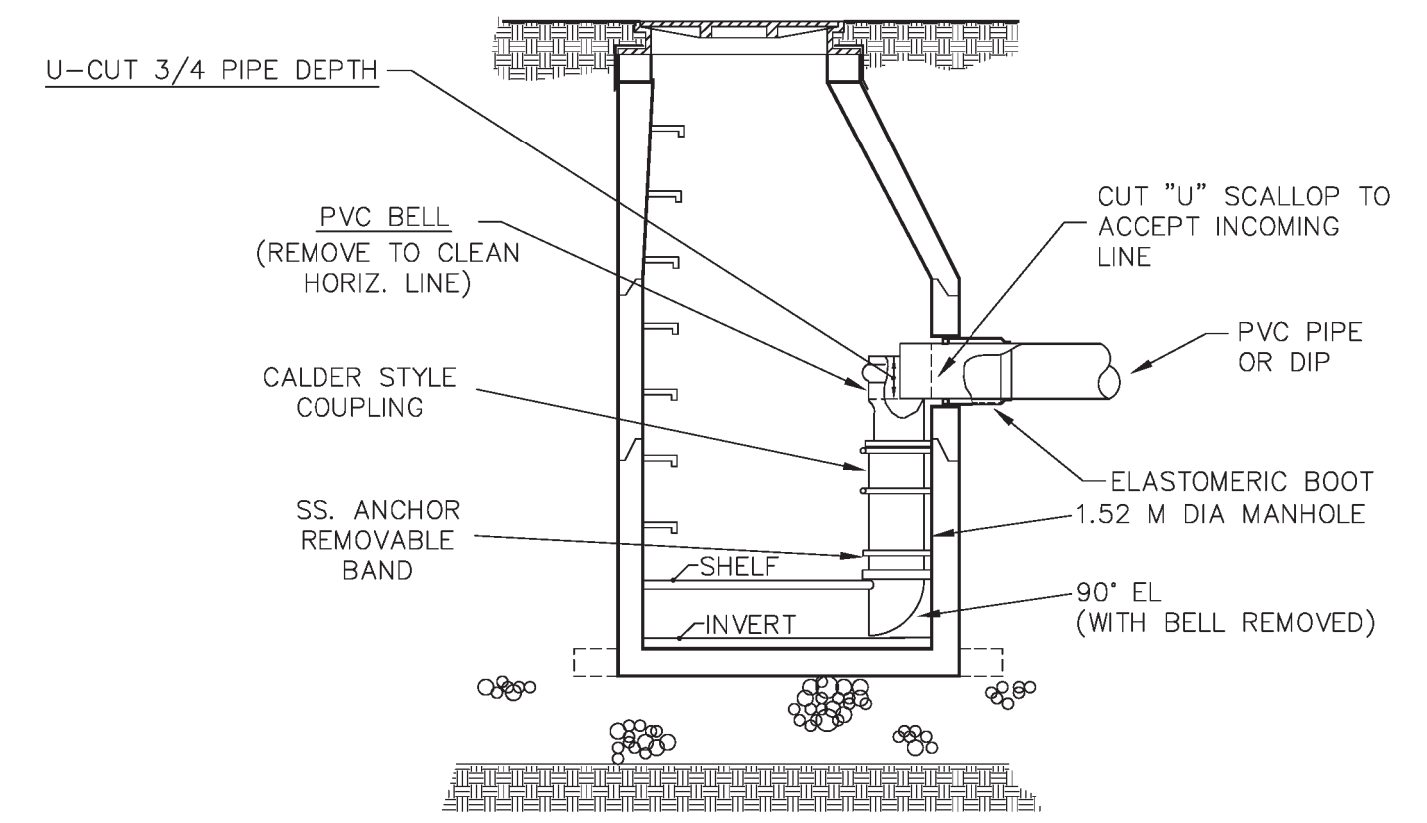
READSBORO, VERMONT

READSBORO BR# 0105(3)
GENERAL DETAILS
SHEET OF

Project #	416006
Project Mgr.	NRJ
Design by	TPK
Drawn by	TPK
Reviewed by	NRJ
Approved by	NRJ
Date	MAY 2011
Scale	AS SHOWN

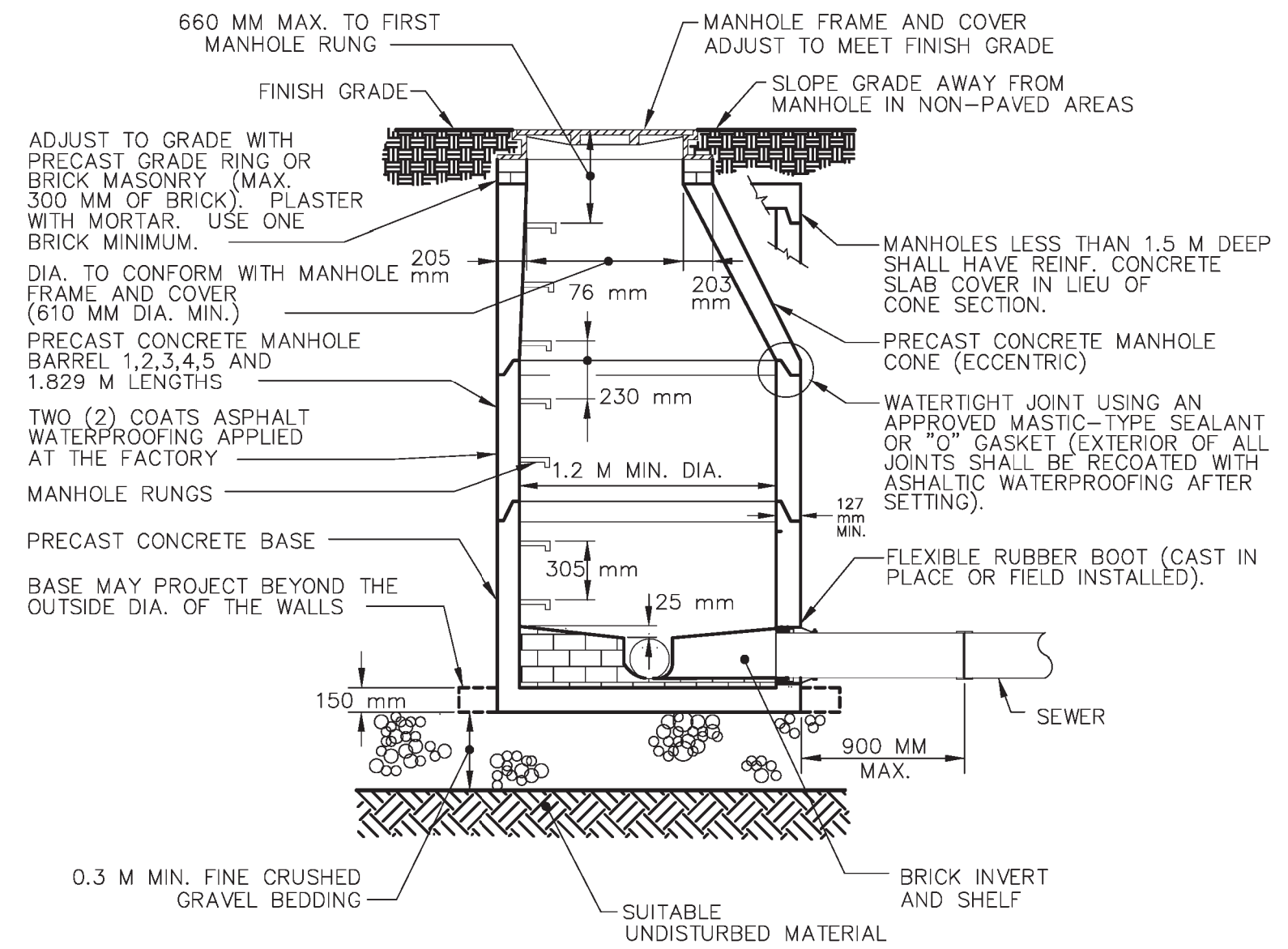


FOR CONSTRUCTION



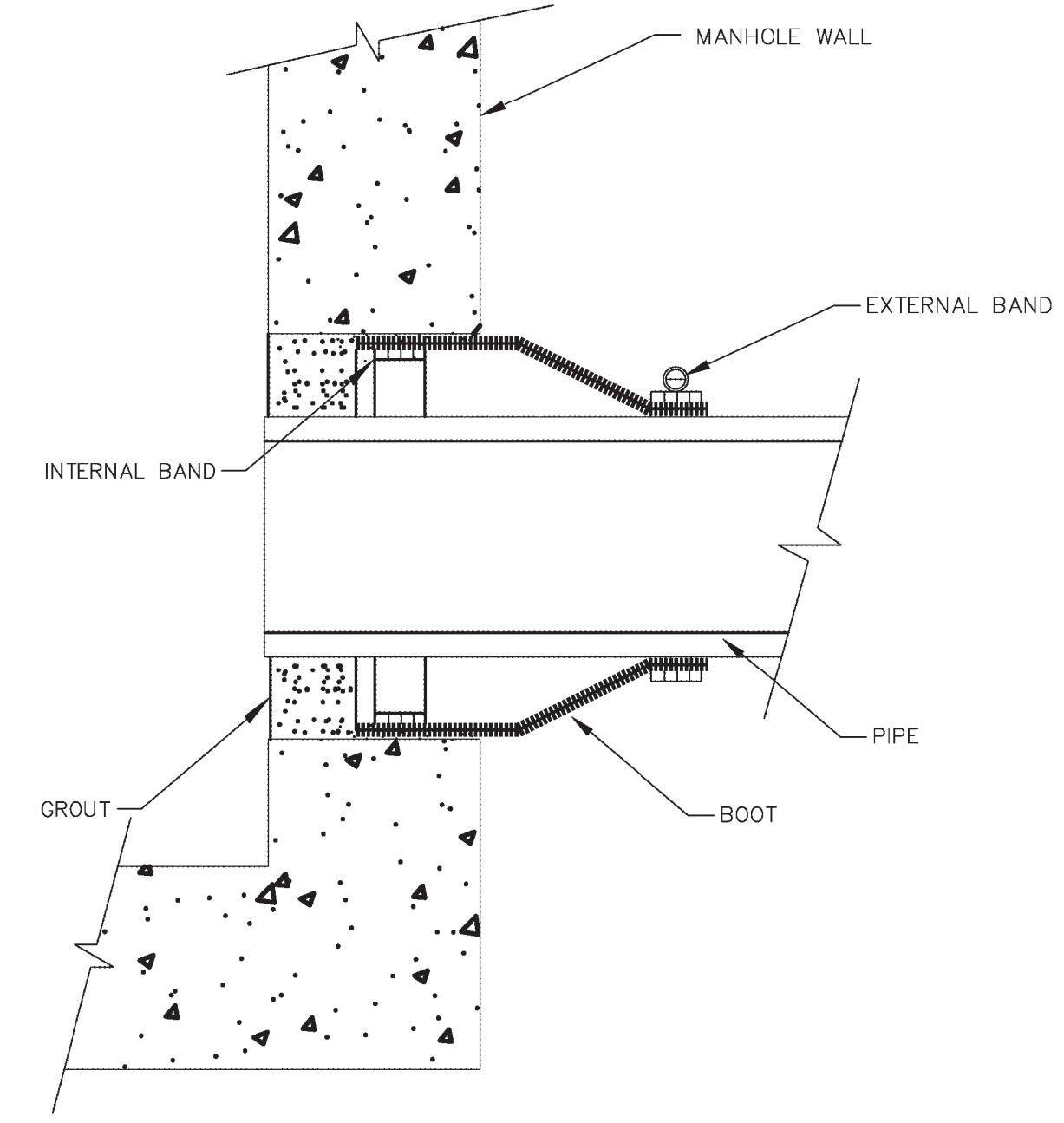
PRECAST CONCRETE DROP MANHOLE

NOT TO SCALE
NOTE:
SEE "PRECAST CONCRETE MANHOLE" DETAIL ON THIS SHEET FOR NOTES AND ADDITIONAL INFORMATION.



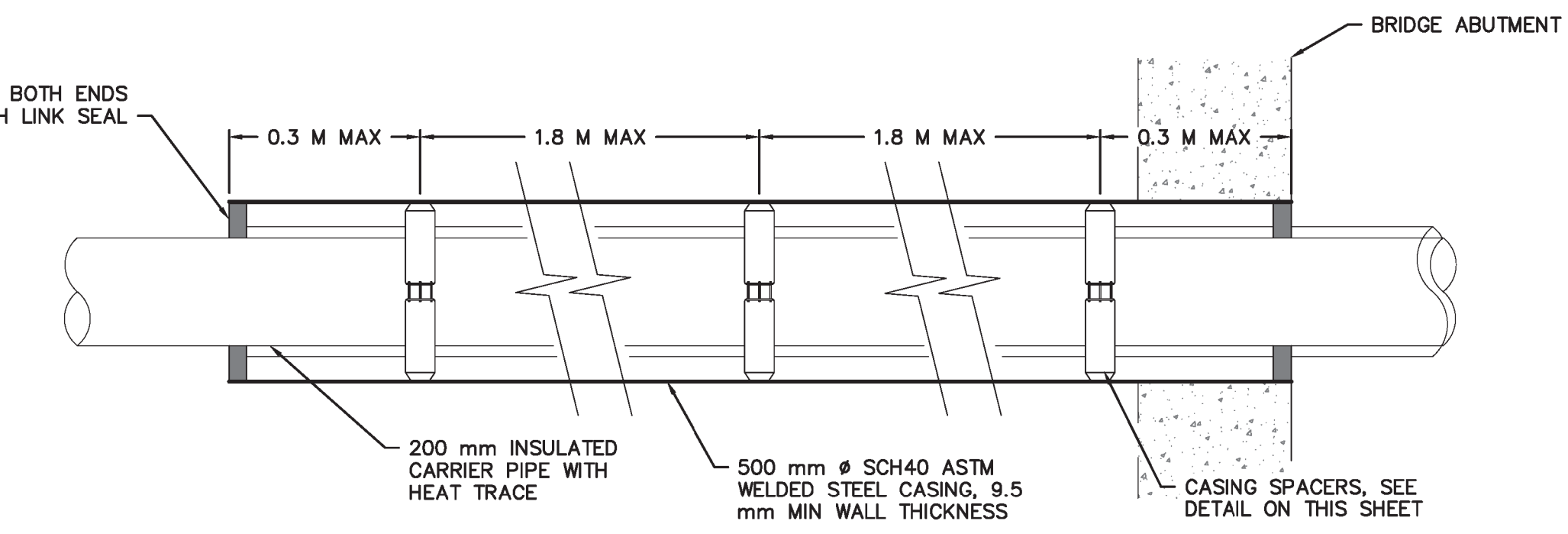
PRECAST CONCRETE MANHOLE

NOT TO SCALE



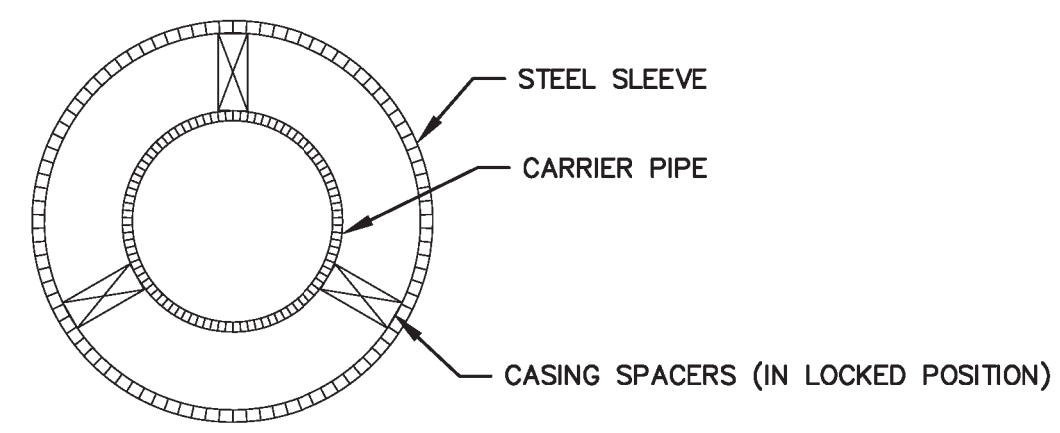
PIPE TO EXISTING MANHOLE JOINT

NOT TO SCALE
NOTE: PIPE CORE SIZE SHALL BE BASED ON MANUFACTURER'S RECOMMENDATIONS.

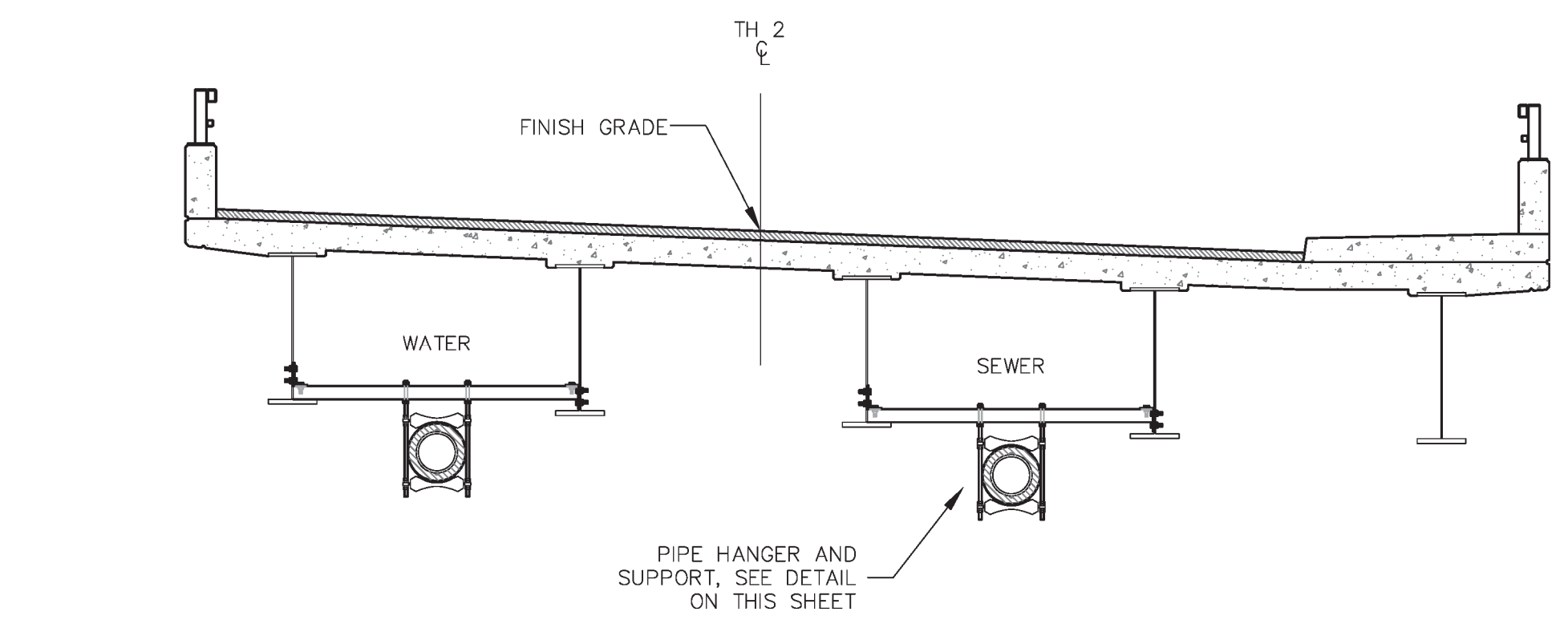


CASING AND SPACER DETAIL

NOT TO SCALE

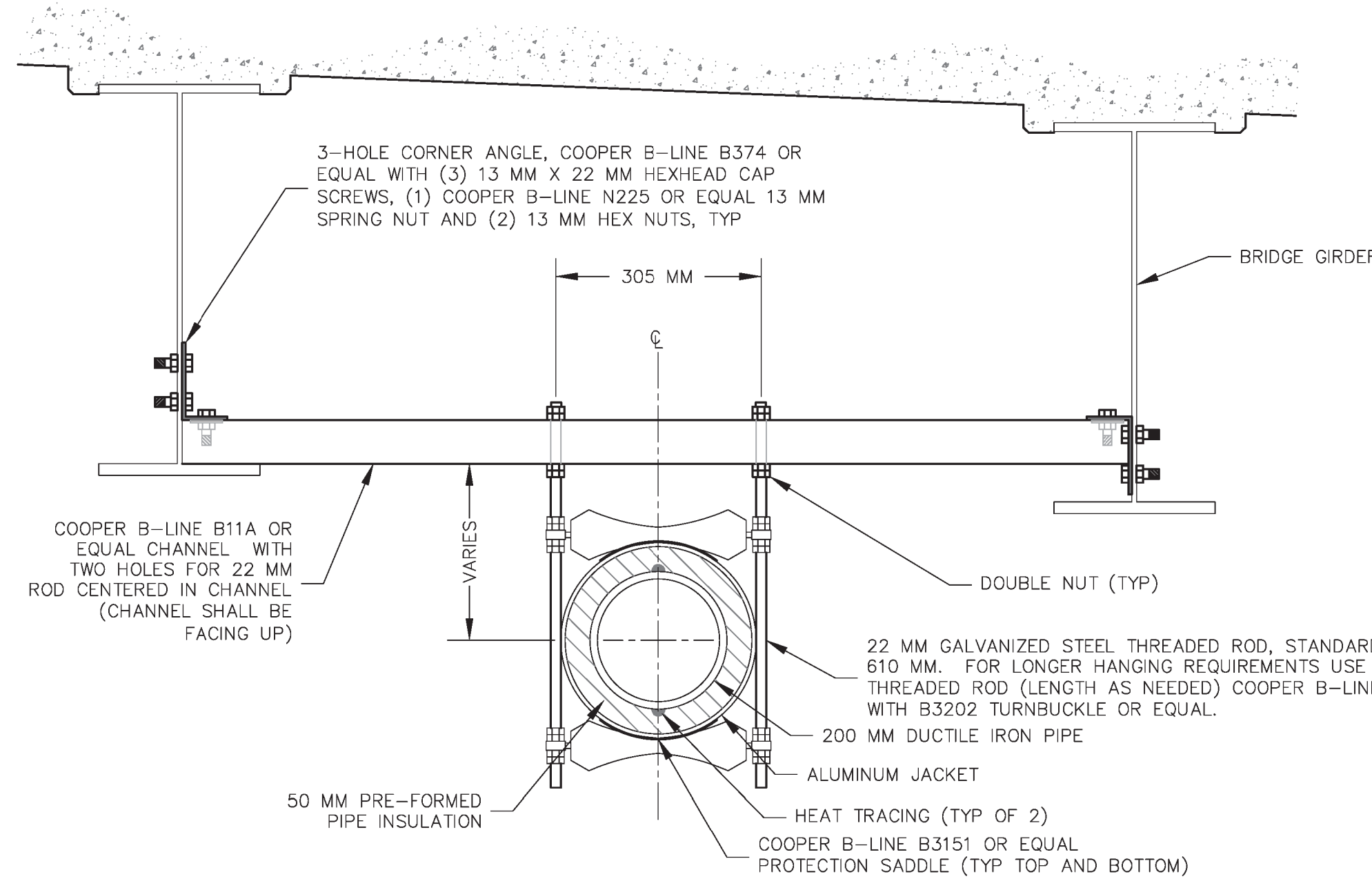


WATER/SEWER MAIN



TYPICAL PIPE CROSSING BRIDGE SECTION

NOT TO SCALE



PIPE SUPPORT DETAIL - SECTION VIEW

NOT TO SCALE

- NOTES:
- CHANNELS AND ANGLE FITTINGS SHALL BE HOT DIPPED GALVANIZED STEEL
 - NUTS AND SCREWS SHALL BE ZINC PLATED STEEL
 - ALL PIPE SUPPORT PARTS WITH PART NUMBERS LISTED SHALL BE AS MANUFACTURED BY COOPER B-LINE OR EQUAL.
 - PIPE SUPPORTS SHALL BE INSTALLED EVERY 3.0 M MAXIMUM.