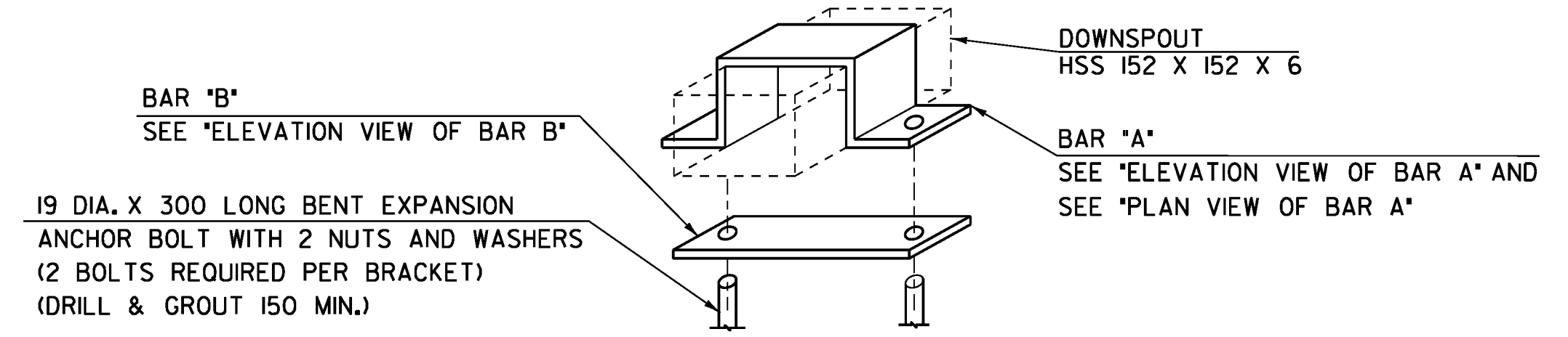
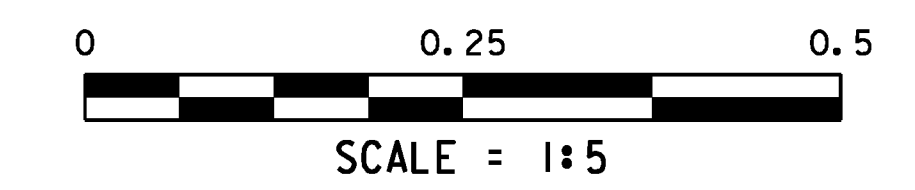
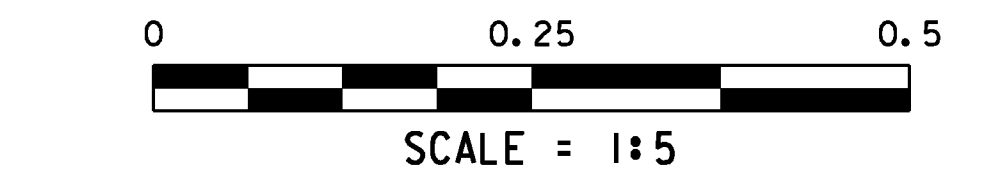


DOWNSPOUT FRONT

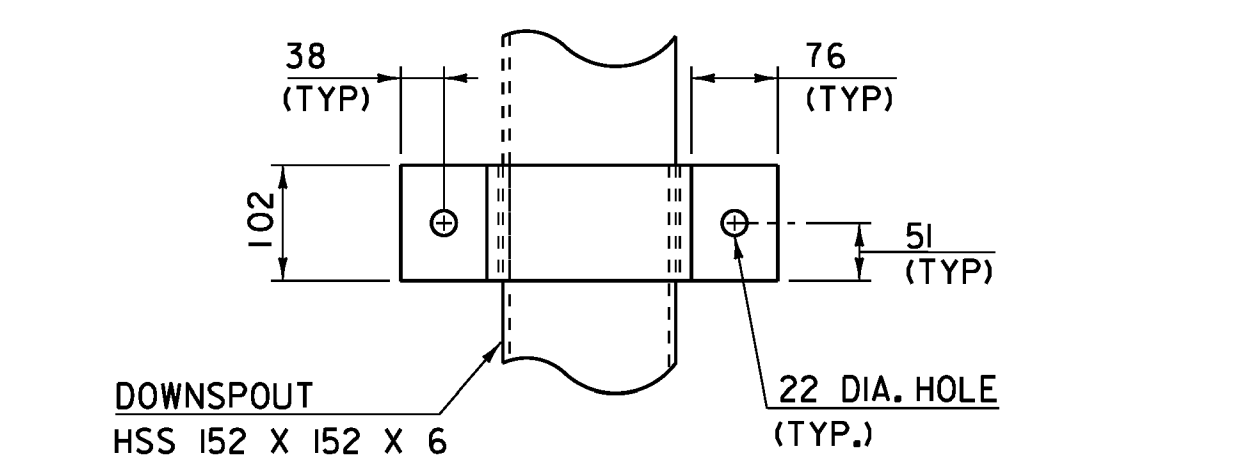
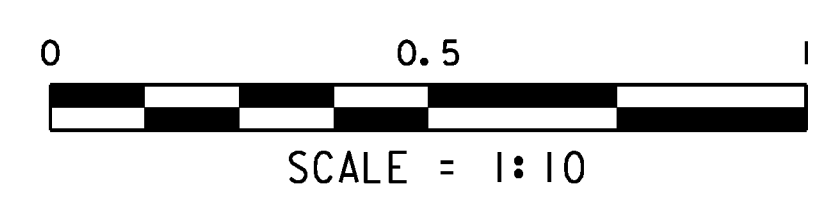
DOWNSPOUT ELEVATION

DOWNSPOUT HOPPER
DETAIL - (FRONT)

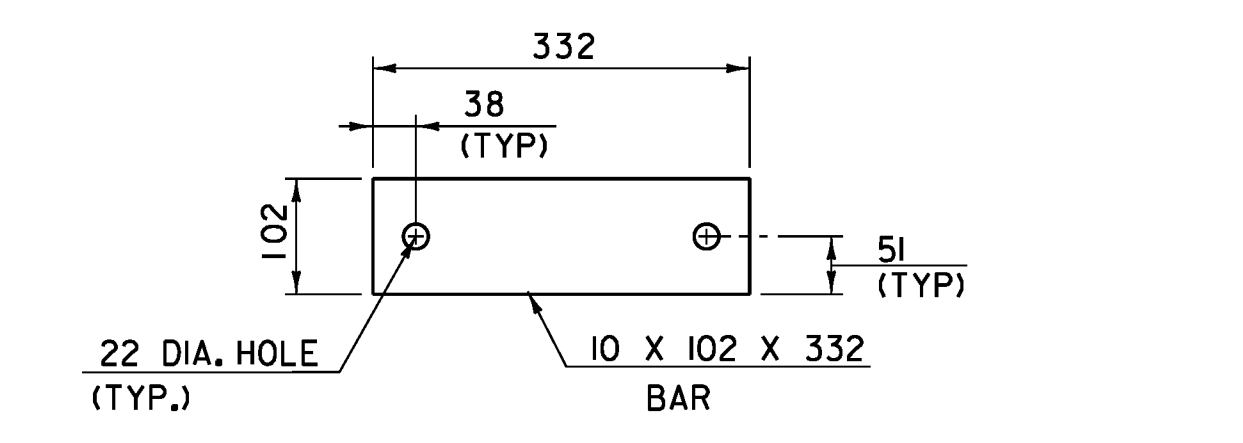
DOWNSPOUT HOPPER
DETAIL - (END)



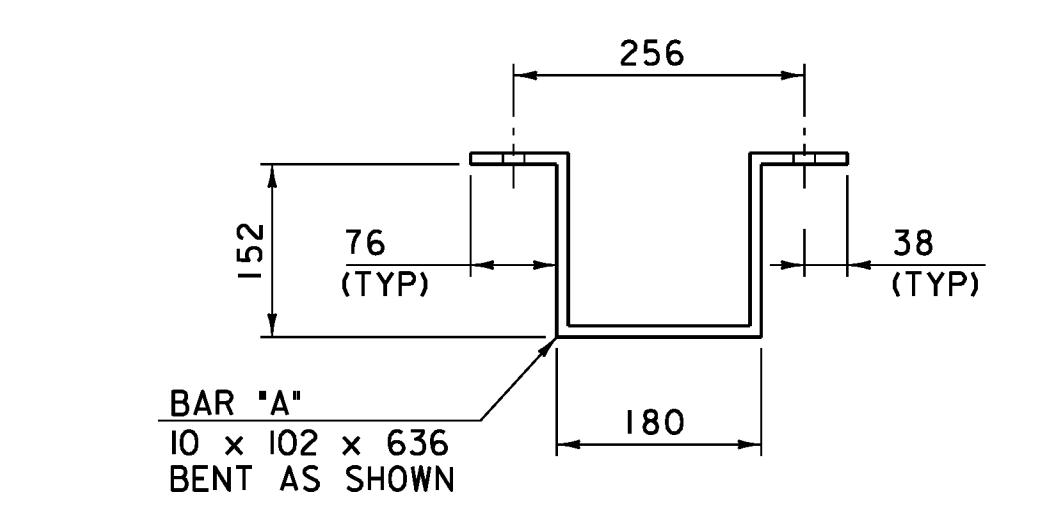
DETAIL ATTACHING DOWNSPOUT
TO BRIDGE SEAT
NTS



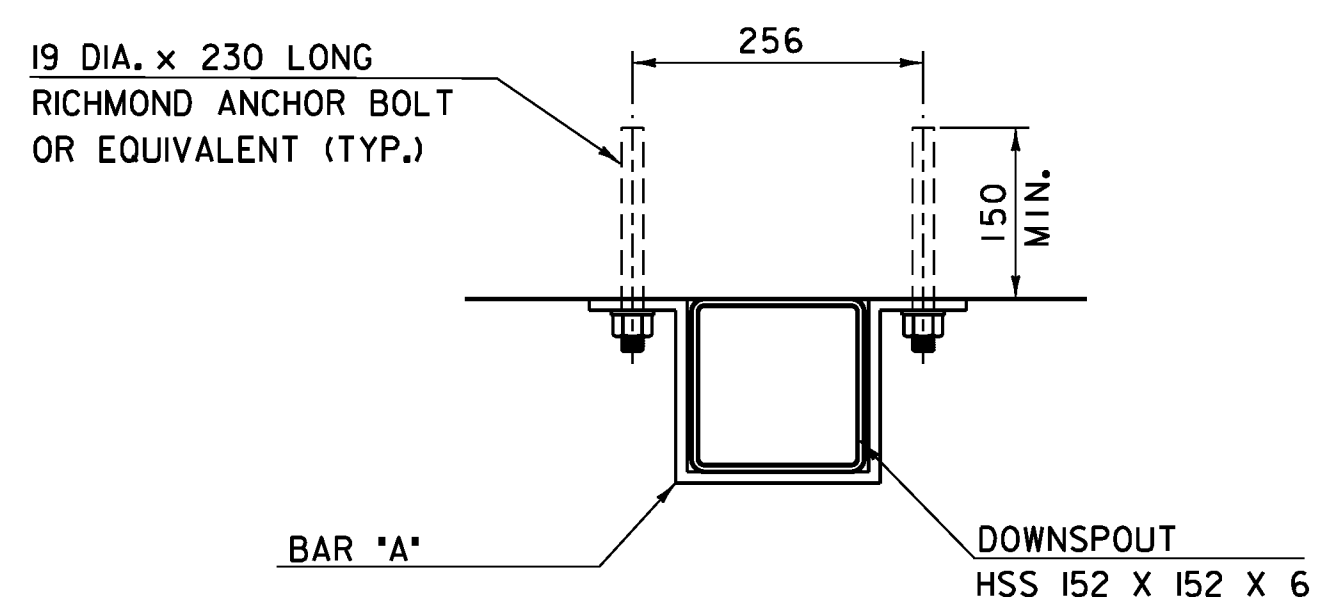
ELEVATION VIEW OF BAR "A"
NTS



ELEVATION VIEW OF BAR "B"
NTS



PLAN VIEW OF BAR "A"
NTS



DETAIL FOR ATTACHING
DOWNSPOUT TO BACKWALL
NTS

DOWNSPOUT NOTES

1. HOLLOW STRUCTURAL STEEL TUBING SHALL CONFORM TO ASTM A500 OR A501.
2. ALL PLATES, BARS, AND ANGLES SHALL CONFORM TO AASHTO M 270M/ 270 GR 36.
3. DOWNSPOUTS SHALL BE GALVANIZED IN ACCORDANCE WITH ASTM A123 AFTER FABRICATION. AFTER GALVANIZATION THEY SHALL BE PAINTED. THE PAINT SHALL BE BROWN COLOR CHIP #20059.
4. ALL BOLTS AND RELATED HARDWARE SHALL BE ASTM A307 AND SHALL BE GALVANIZED IN ACCORDANCE WITH ASTM A153 (AASHTO M 232M/ M 232).
5. IN AREAS WHERE THE GALVANIZING HAS BEEN REMOVED FROM THE DOWNSPOUTS EITHER BY CUTTING, BURNING, WELDING, PLACING, OR ANY OTHER MEANS, IT SHALL BE REPAIRED BY THOROUGHLY CLEANING THE DAMAGED AREAS WITH A WIRE BRUSH AND PAINTING THE DAMAGED AREAS WITH TWO COATS OF AN APPROVED SEALANT.
6. ALL MATERIALS AND INSTALLATION COSTS FOR THE DOWNSPOUTS, INCLUDING STEEL TUBING, GALVANIZING, RELATED HARDWARE, AND ANCHOR BOLTS SHALL BE PAID FOR UNDER ITEM 506.60 "STRUCTURAL STEEL". PAINTING WILL BE PAID FOR UNDER THE SECTION 513 ITEMS IN THE CONTRACT.
7. THE PLATES REFERENCED ON THIS SHEET ARE 6MM THICK UNLESS OTHERWISE NOTED.

PROJECT NAME:	READSBORO	FILE NAME:	89J088/STR/s89J088sup.dgn	PLOT DATE:	07-MAR-2012
PROJECT NUMBER:	BRF 0105 (3)	PROJECT LEADER:	J. LACROIX	DRAWN BY:	G. ROKES
		DESIGNED BY:	G. ROKES	CHECKED BY:	W. PELLETIER
		DOWNSPOUT DETAILS SHEET		SHEET	61 OF 90