

CHANGED TO GRANITE CURB AT TOWNS REQUEST AND CONTRACTOR INSTALLED AT SAME CONTRACT PRICE

CAST IN-PLACE CONCRETE CURB, TYPE B

STATION 1+007.000 - 1+055.000 LT  
 STATION 1+020.000 - 1+029.313 RT  
 STATION 1+039.139 - 1+068.600 RT  
 STATION 1+101.580 - 1+125.926 RT  
 STATION 1+123.000 - 1+150.000 LT  
 STATION 1+134.000 - 1+150.000 RT

DELINEATOR WITH STEEL POST

STA. 1+074.246 OFFSET 11.383 RT (WHITE)  
 STA. 1+100.342 OFFSET 9.221 LT (WHITE)

VERTICAL GRANITE CURB

APPROX. STA. 1+023 ~ 1+025 LT  
 APPROX. STA. 1+023 ~ 1+025 RT  
 STA. 1+040 ± STA. 1+062.5 RT  
 STA. 1+107.68 ~ STA. 1+122 ± RT  
 APPROX. STA. 1+130 ~ STA 1+205 RT

CONSTRUCT PAVED DRIVES

MAINLINE STATION 1+034.230 RT (8.5 WIDTH)  
 MAINLINE STATION 1+112.000 LT (12.7 WIDTH)  
 MAINLINE STATION 1+130.000 RT (7.5 WIDTH)  
 DRIVE 1 STATION 2+004.660 - 2+020.000 (WIDTH VARIES)  
 DRIVE 2 STATION 3+004.460 - 3+031.610 (4.0 WIDTH)

HD STEEL BEAM GUARDRAIL, GALVANIZED

MAINLINE STATION 1+057.900 - 1+062.100 RT  
 DRIVE 1 STATION 1+108.600 - 1+121.000 RT  
 DRIVE 1 STATION 2+007.680 - 2+013.500 RT

ANCHOR FOR STEEL BEAM RAIL

MAINLINE STATION 1+060.650 RT  
 STATION 1+106.800 LT  
 STATION 1+118.400 RT  
 DRIVE 1 STATION 2+011.750 RT

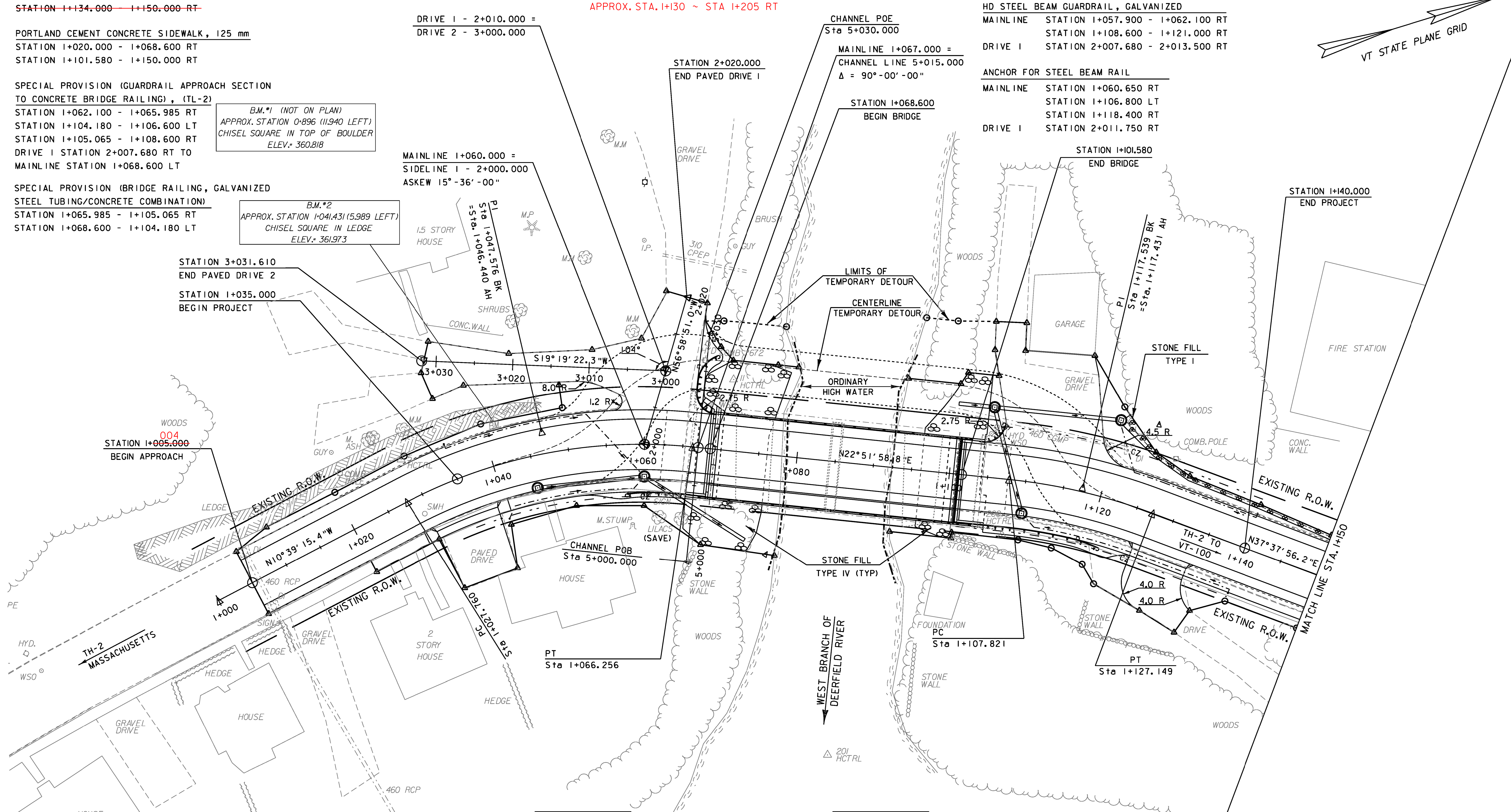
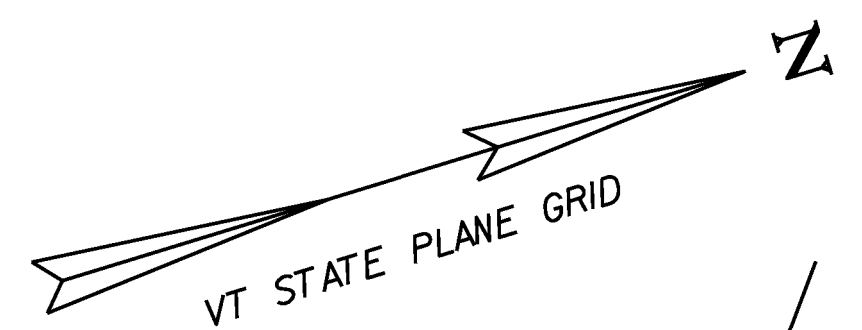
PORTLAND CEMENT CONCRETE SIDEWALK, 125 mm  
 STATION 1+020.000 - 1+068.600 RT  
 STATION 1+101.580 - 1+150.000 RT

SPECIAL PROVISION (GUARDRAIL APPROACH SECTION TO CONCRETE BRIDGE RAILING), (TL-2)  
 STATION 1+062.100 - 1+065.985 RT  
 STATION 1+104.180 - 1+106.600 LT  
 STATION 1+105.065 - 1+108.600 RT  
 DRIVE 1 STATION 2+007.680 RT TO MAINLINE STATION 1+068.600 LT

B.M.#1 (NOT ON PLAN)  
 APPROX. STATION 0+896 (11,940 LEFT)  
 CHISEL SQUARE IN TOP OF BOULDER  
 ELEV. = 360.818

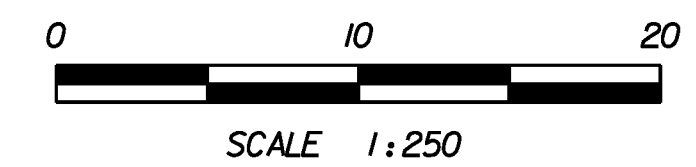
SPECIAL PROVISION (BRIDGE RAILING, GALVANIZED STEEL TUBING/CONCRETE COMBINATION)  
 STATION 1+065.985 - 1+105.065 RT  
 STATION 1+068.600 - 1+104.180 LT

B.M.#2  
 APPROX. STATION 1+041.431 (5,989 LEFT)  
 CHISEL SQUARE IN LEDGE  
 ELEV. = 361.973



CURVE #1 DATA	
Δ	= 33°-31'-14.2" RT
R	= 65.800
T	= 19.816
L	= 38.496
E	= 2.919
BANK	= 0.040

CURVE #2 DATA	
Δ	= 14°-45'-57.4" RT
R	= 75.000
T	= 9.718
L	= 19.329
E	= 0.627
BANK	= 0.040



PROJECT NAME: READSBORO  
 PROJECT NUMBER: BRF 0105 (3)  
 FILE NAME: 89J088/STR/s89J088bdr.dgn  
 PROJECT LEADER: J. LACROIX  
 DESIGNED BY: W. PELLETIER  
 LAYOUT SHEET 1

PLOT DATE: 07-MAR-2012  
 DRAWN BY: G. ROKES  
 CHECKED BY: W. PELLETIER  
 SHEET 13 OF 90