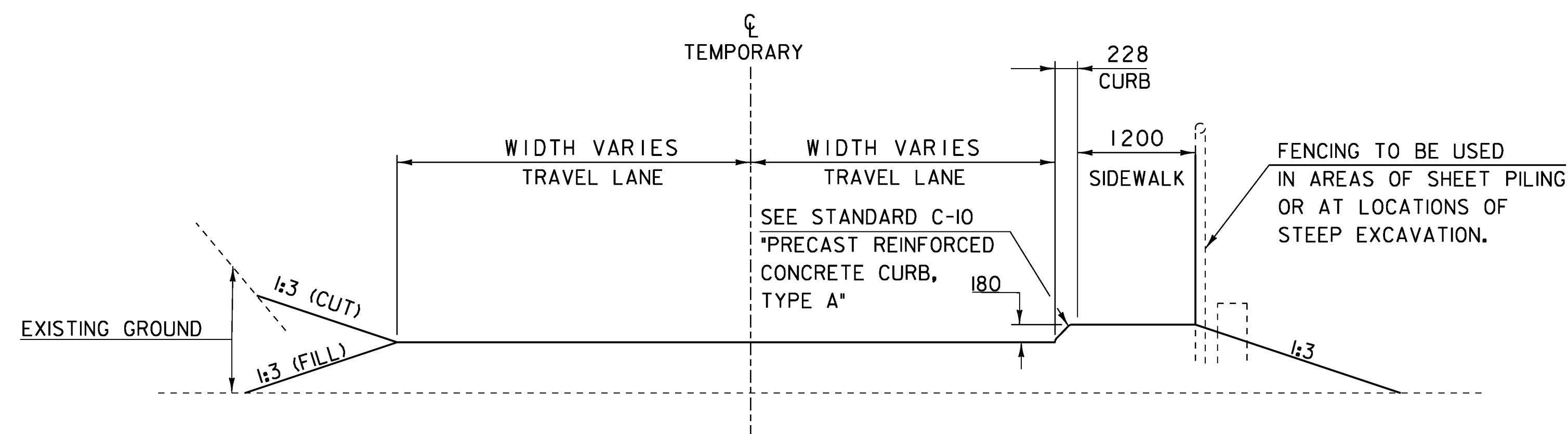


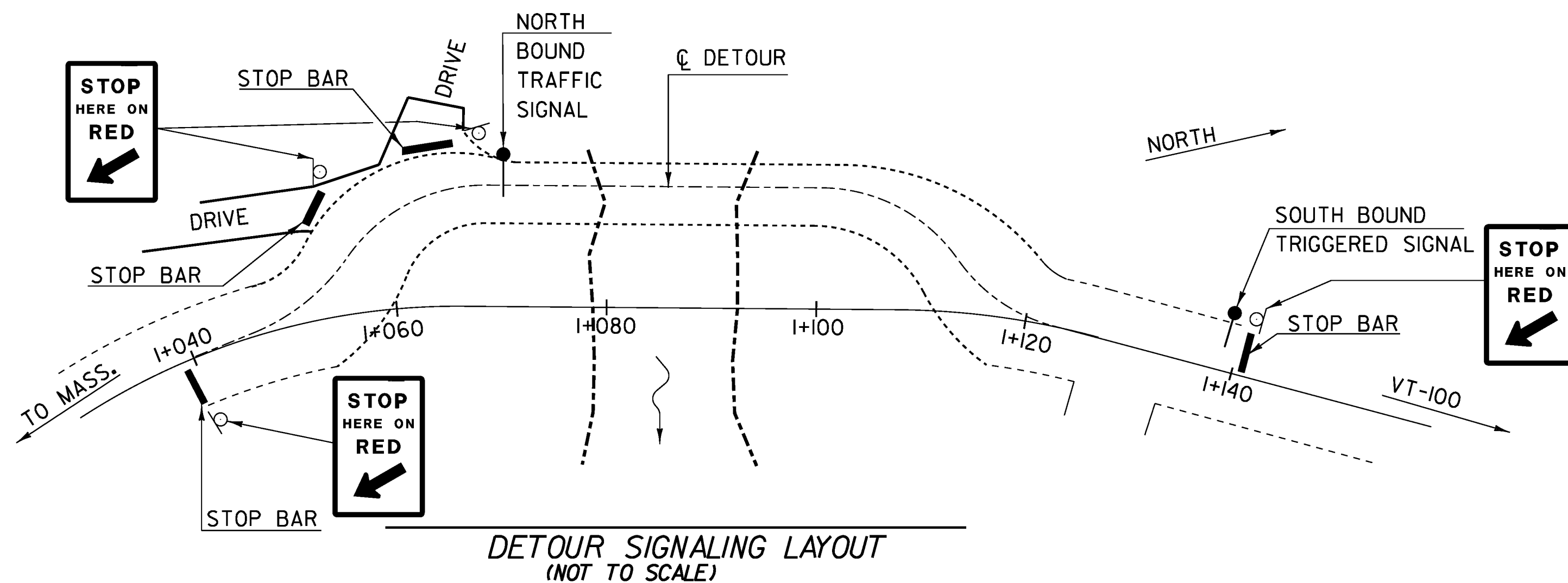
TEMPORARY ONE LANE BRIDGE TYPICAL SECTION
(NOT TO SCALE)



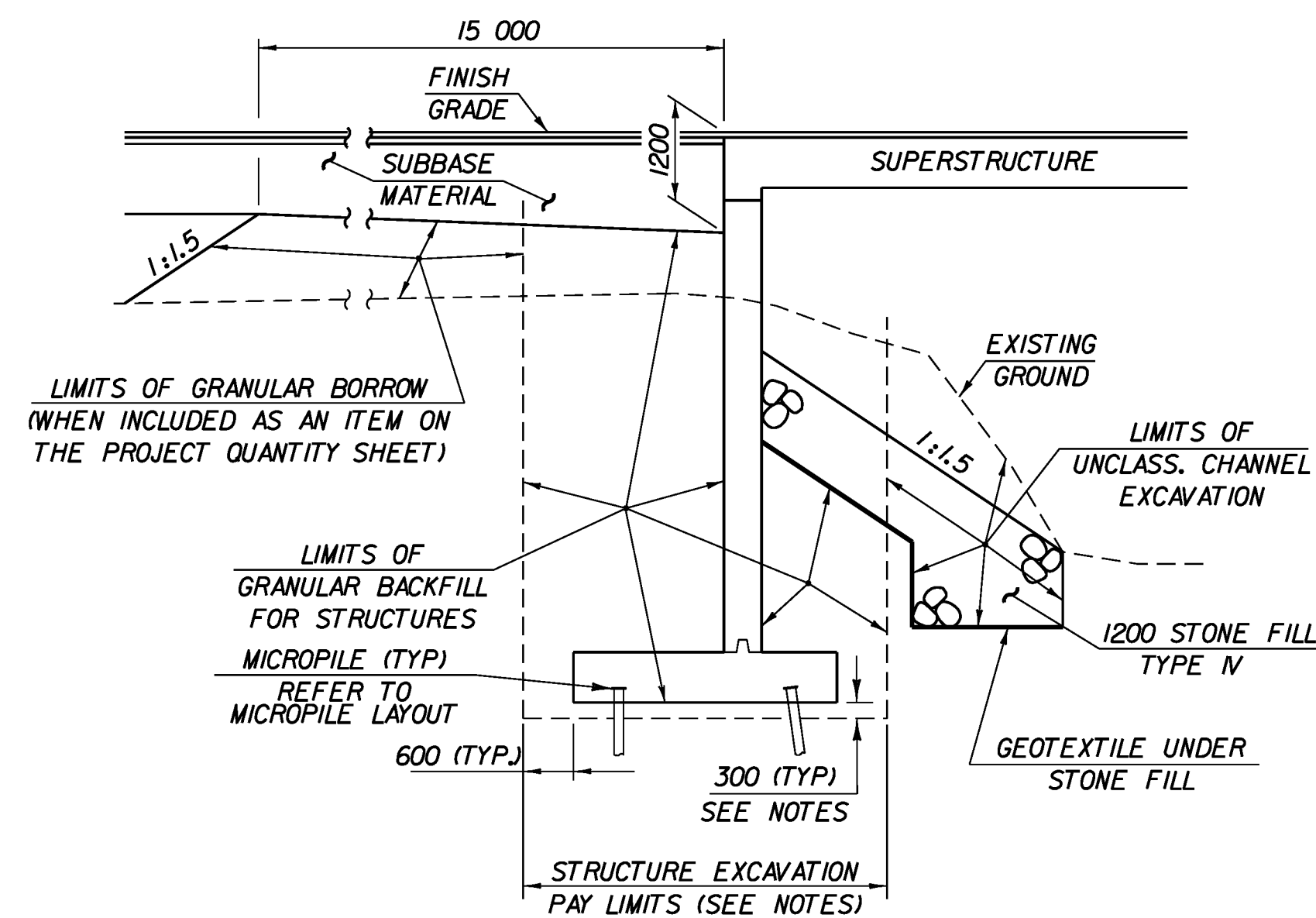
TEMPORARY ROAD APPROACH SECTION
(NOT TO SCALE)

DETOUR NOTES:

NORTH BOUND TRAFFIC TO VT-100 ON TH-2 SHALL HAVE A CONTINUOUSLY GREEN TRAFFIC SIGNAL INCLUDING THE TWO DRIVES AT I+060.00 LT SEE "DETOUR SIGNALING LAYOUT" THIS SHEET. THE SOUTH BOUND TRAFFIC TO MASSACHUSETTS SHALL HAVE A RED SIGNAL AT AROUND STA. I+140.00 THAT IS TRIGGERED GREEN BY A DETECTION DEVICE AND INTURN STOPS NORTH BOUND TRAFFIC AT AROUND STA. I+040.00 SEE "DETOUR SIGNALING LAYOUT" THIS SHEET; ALSO SEE "SIGNAL TIMING CHART" THIS SHEET.

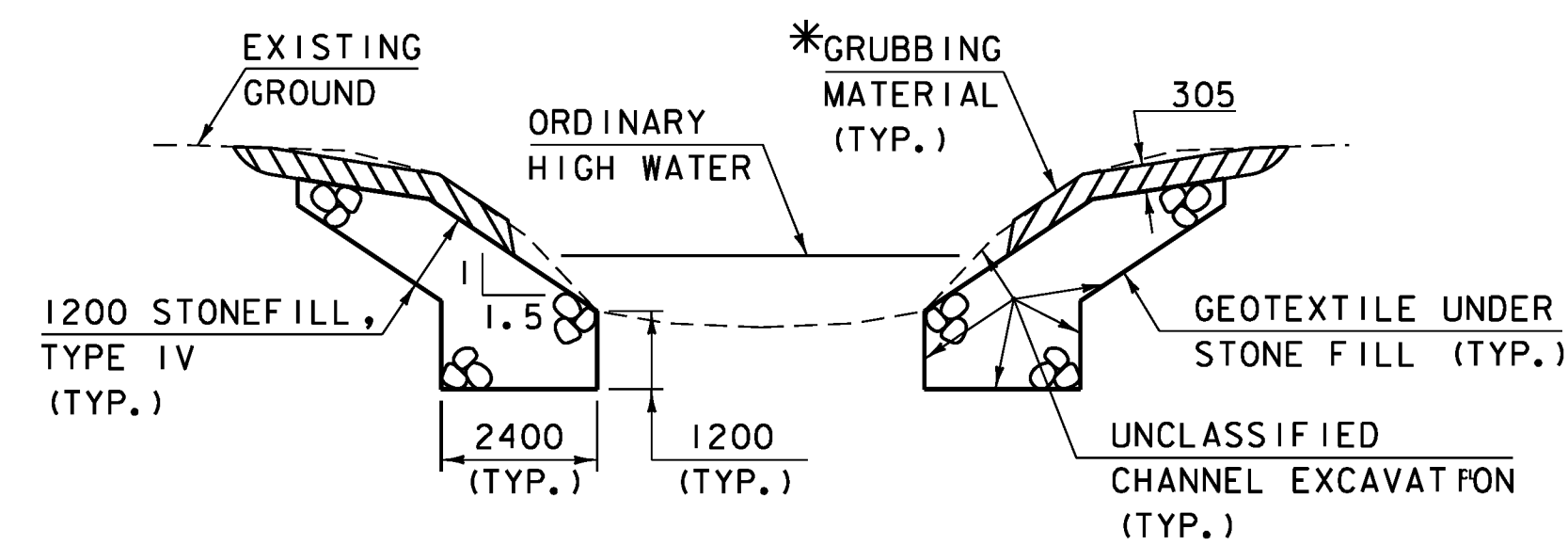


DETOUR SIGNALING LAYOUT
(NOT TO SCALE)



NOTE: ANY PORTIONS OF EXISTING ABUTMENTS WHICH ARE OUTSIDE THE LIMITS OF STRUCTURE EXCAVATION OR UNCLASSIFIED CHANNEL EXCAVATION SHALL BE REMOVED USING PAY ITEM 52915 REMOVAL OF STRUCTURE. 300mm UNDERCUT AS DETERMINED NECESSARY BY THE RESIDENT ENGINEER.

TYPICAL ABUTMENT SECTION - (NO COFFERDAM)
(NOT TO SCALE)



TYPICAL CHANNEL SECTION
(NOT TO SCALE)

*GRUBBING MATERIAL SHALL NOT BE PLACED ON THE STONE FILL IN THE AREA UNDER THE BRIDGE. WHENEVER CHANNEL SLOPE INTERSECTS ROADWAY SUBBASE, GRUBBING MATERIAL SHALL BEGIN AT THE BOTTOM OF SUBBASE.

NORTH BOUND SIGNAL SEQUENCE		
	LIGHT	SECONDS
○ ○ ○	RED	ACTIVATED BY SOUTH BOUND TRIGGER
	YELLOW	3.5
	GREEN	CONTINUOUS

SOUTH BOUND SIGNAL SEQUENCE		
	LIGHT	SECONDS
○ ○ ○	RED	20.0
	YELLOW	3.5
	GREEN	TRIGGERED SIGNAL

SIGNAL TIMING CHART

PROJECT NAME: READSBORO
PROJECT NUMBER: BRF 0105 (3)

FILE NAME: 89J088/STR/s89J088typ.dgn PLOT DATE: 07-MAR-2012
PROJECT LEADER: J. LACROIX DRAWN BY: G. ROKES
DESIGNED BY: W. PELLETIER CHECKED BY: W. PELLETIER
TYPICAL SECTIONS SHEET 2 SHEET 4 OF 90