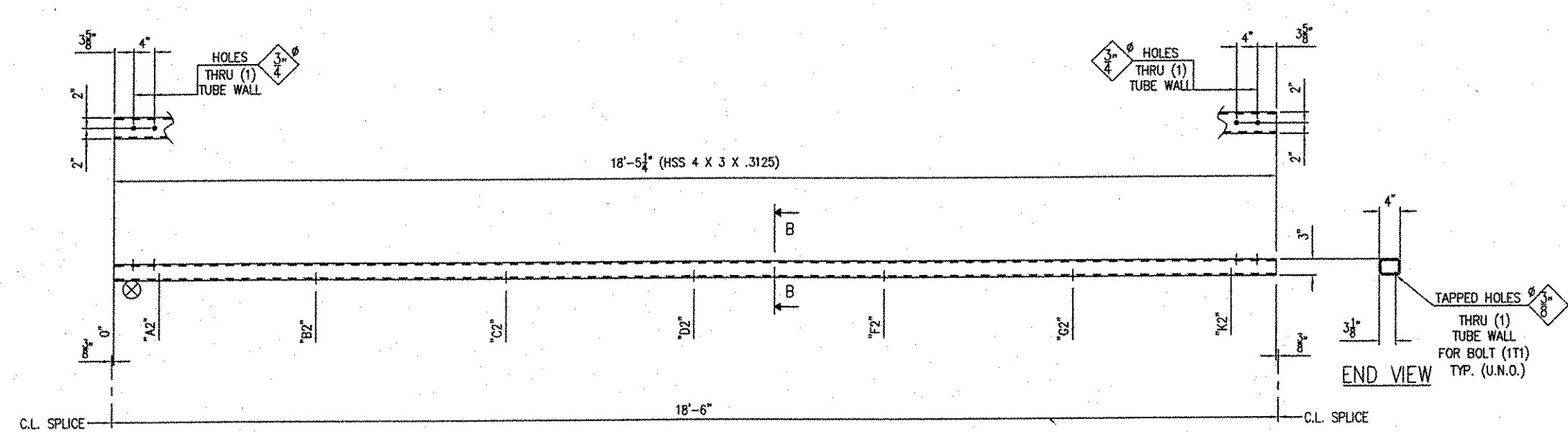
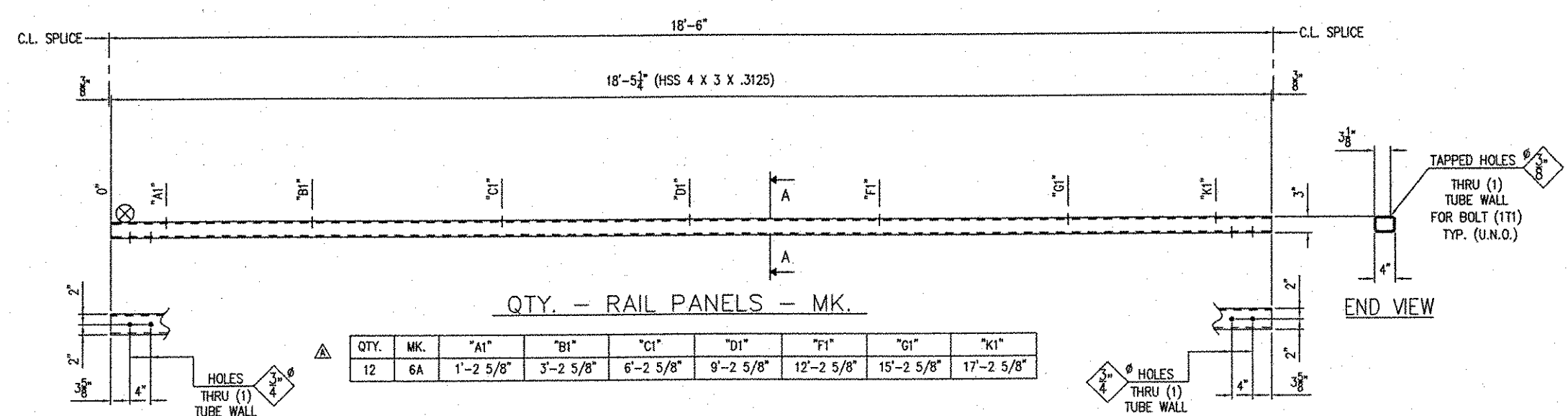


QTY.	MK.	DESCRIPTION	MATERIAL	LENGTH	REMARKS	PART NO.
EA	12	RAIL PANEL		18'-5 1/4"		
BOLT	12	HSS 4 X 3 X 5/8	A500 GR. B	18'-5 1/4"	A123-105, CN	
BOLT	12	HSS 4 X 3 X 5/8	A500 GR. B	18'-5 1/4"	A123-105, CN	



RECEIVED  
 CK'D BY ELR OK'D BY RSJ  
 AUG 07 2007  
 RESUBMIT \_\_\_\_\_ APPROVED \_\_\_\_\_  
 BY CPW DATE 8/17/07

- SEE SHEET NO. 1 FOR GENERAL NOTES

APPROVAL	DATE	REV.	DESCRIPTION

LOCATION	ITEM	QUANTITY
BRIDGE - 26		
PROJECT - ROUTE NO. 107/71, CL3		
F.A.P. NO. - BRD-01N 2005(1)		
P.O. NO. -		
DESIGNER - VERMONT DEPARTMENT OF TRANSPORTATION		
CUSTOMER - CONTRACTORS CRANE SERVICE, LLC		

DATE: 8/17/07  
 TIME: 12:06  
 BY: CPW

SHOP NOTE  
 @ - INDICATES LOCATION OF SHIPPING PECE MARK

087-BF