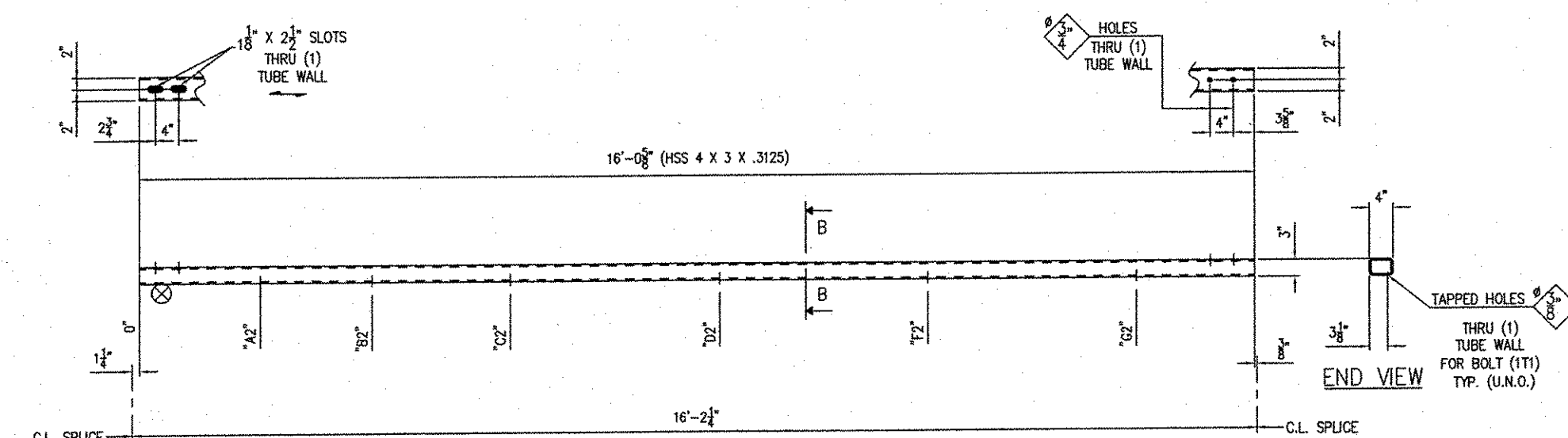
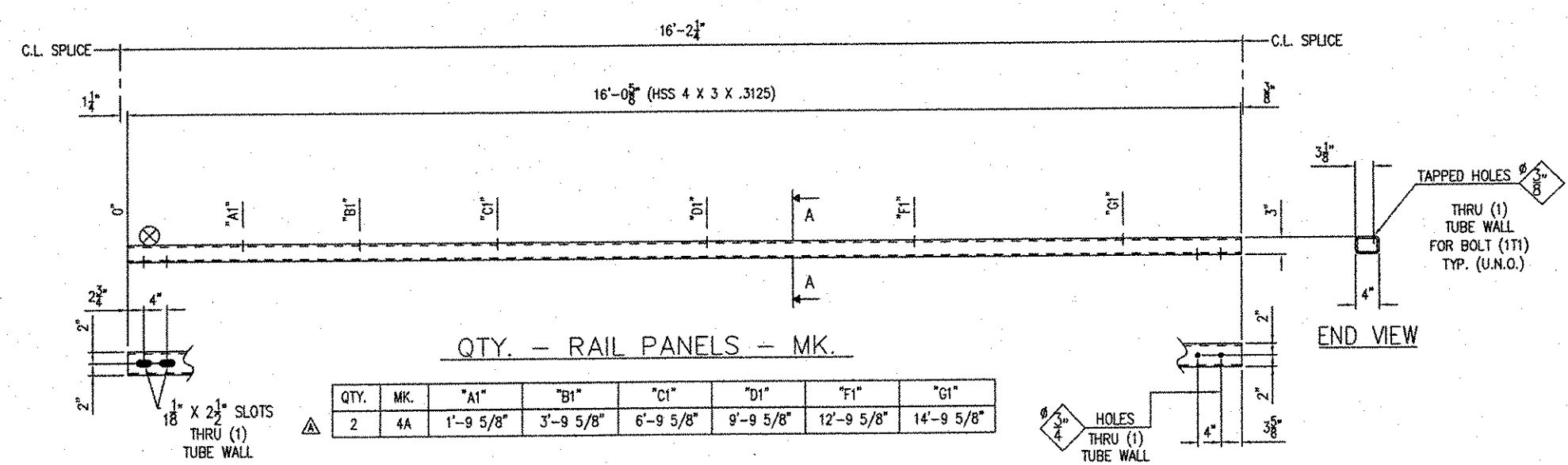


NO.	QTY.	DESCRIPTION	MATERIAL	LENGTH	REMARKS	PART NO.
4A	2	RAIL PANEL		16'-0 5/8"		
4C1	2	HSS 4 X 3 X 5/8	ASSD GR B	16'-0 5/8"	A172-1802, CN	
4B	2	RAIL PANEL		16'-0 5/8"		
4C1	2	HSS 4 X 3 X 5/8	ASSD GR B	16'-0 5/8"	A172-1802, CN	

NOTE: ALL MATERIAL SPECIFICATIONS DESCRIBED ARE ASTM, UNLESS OTHERWISE NOTED.



RECEIVED
 CK'D BY ELR OK'D BY RPV
 AUG 07 2007
 RESUBMIT _____ APPROVED _____
 BY CPW DATE 8/1/07

- SEE SHEET NO. 1 FOR GENERAL NOTES

NO.	REV.	DESCRIPTION	DATE	BY	CHK'D
1					

LOCATION	ITEM	QUANTITY
BRIDGE - 28		
PROJECT - ROUTE NO. 167/11, DLS		
F.A.P. NO. - 890-876 2002(1)		
P.O. NO. -		
DESIGNER - VERMONT DEPARTMENT OF TRANSPORTATION		
CUSTOMER - CONTRACTORS CRANE SERVICE, LLC		

DATE: 8/1/07
 TIME: 1206
 SHEET: 04

B.S. BROWN
 THE B.S. BROWN COMPANY
 300 E. CHERRY STREET
 WINDY HILL, VERMONT 05692
 TEL: 802.233.4444
 FAX: 802.233.4444
 WWW.BSBROWN.COM

SHIP NOTE:
 @ - INDICATES LOCATION OF SHIPPING PIECE MARK

085-02