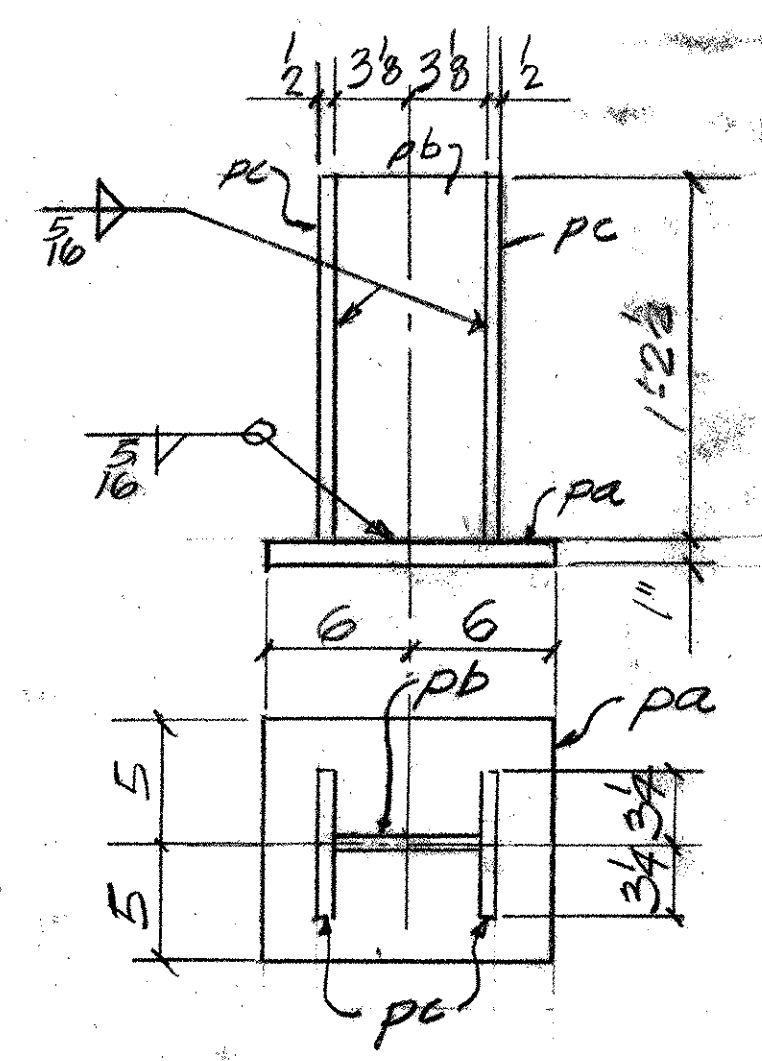
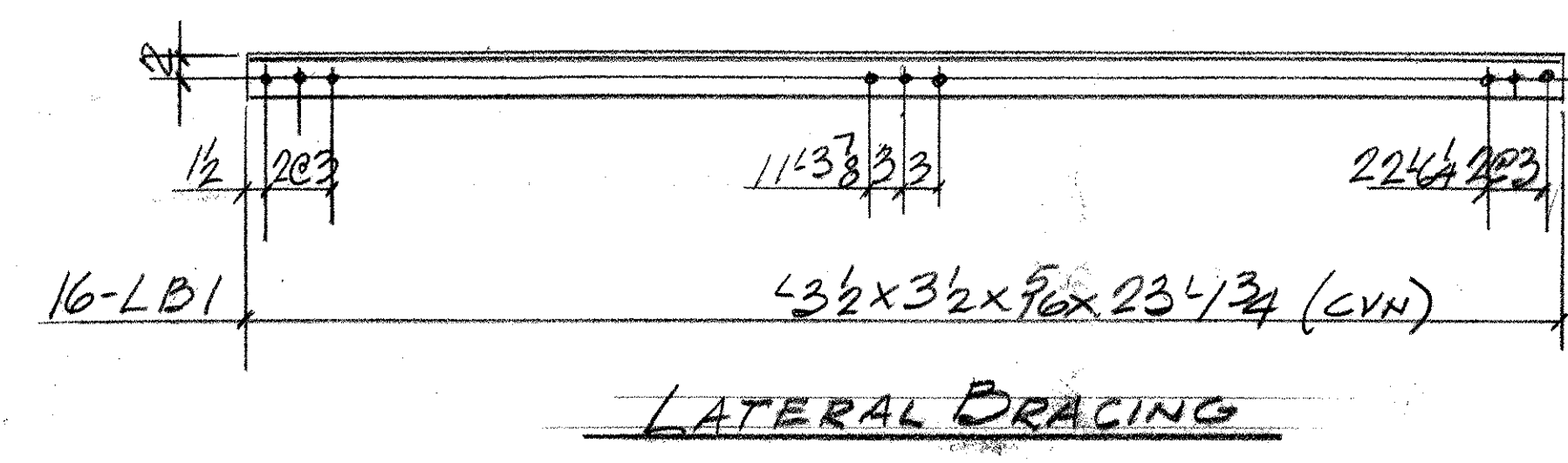
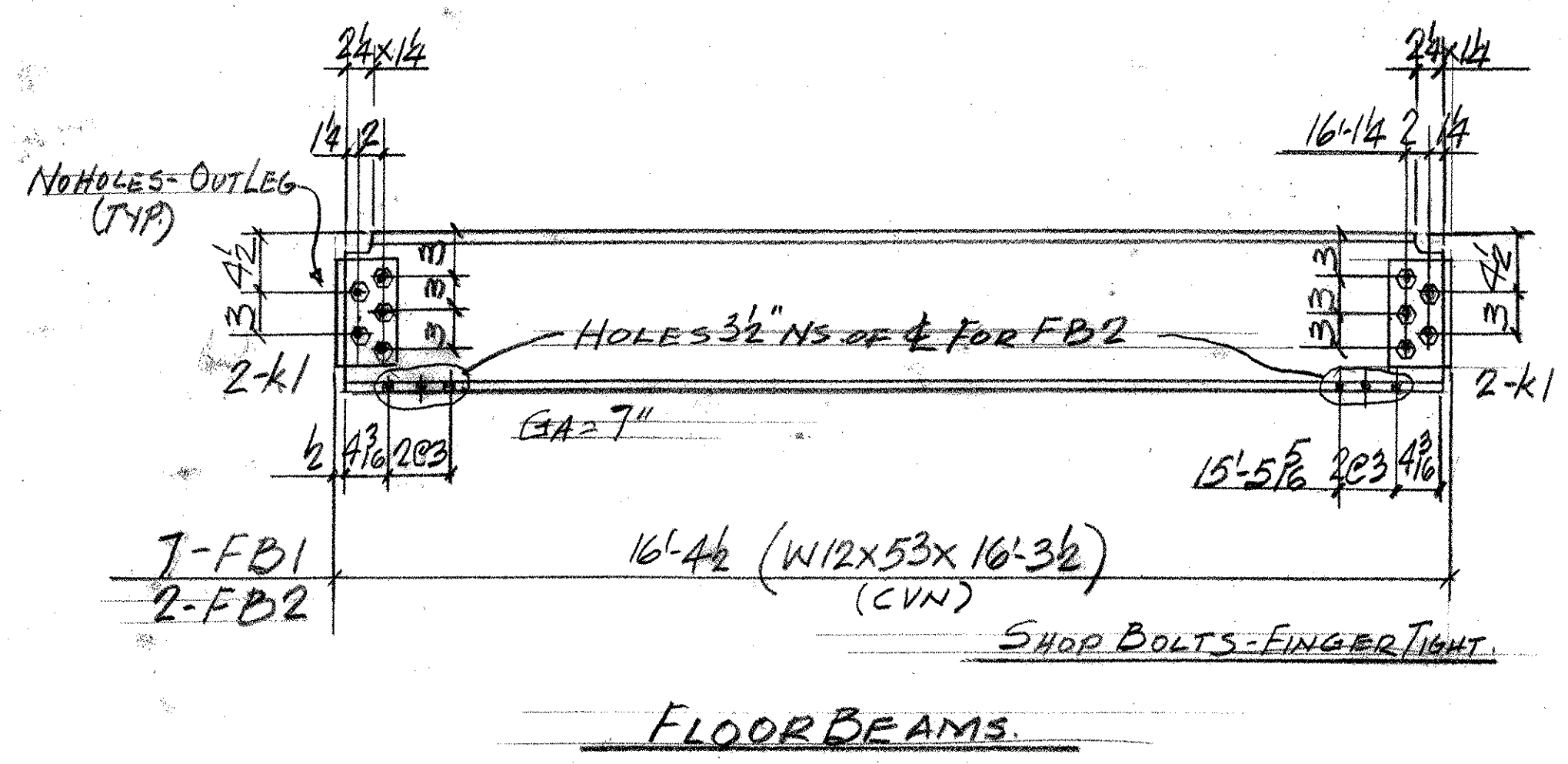


ABM INFO		SHOP BILL				JOB NO. 329	DRG. NO. 51		
PAGE	LINE	NO.	DESCRIPTION	FT	IN	ASSEM. MARK	SHIPPING MARK	REMARKS	WEIGHT
	7		W12x53	16	3/2		FB1 (CVN)		
	2		DO	16	3/2		FB2 DO		
			30-5x3x3/8	9	K1				
			90 3/4" BOLTS 3/4" DIA. 1/2" THICK 4325-GALV.	2 1/2		SHOP			
	16		L32x32x7/16	23	1/4		LB1 (CVN)		
	4		ASS'Y	1	3/2		BC1		
	4		2"x10	1	0	PC		506.60 (EXTRA)	
	4		2 1/2"x6 1/2"	1	2 1/2	PC			
	8		2 1/2"x6 1/2"	1	2 1/2	PC			
	2		L2 1/2"x2 1/2"x4	26	6		L25 (CVN)		
	4		L3x2 1/2"x4	26	6		L29 (CVN)		
	2		L3 1/2"x2 1/2"x4	13	6		L17 (CVN)		
	4		L3x2 1/2"x4	19	10		L18 (CVN)		
	4		DO	19	10		L31		
	8		L2 1/2"x2 1/2"x4	18	6		L7		
	4		DO	18	6		L14		
	4		L3x2 1/2"x4	26	6		L20 (CVN)		
	8		L3 1/2"x2 1/2"x4	18	6		L10		
	8		DO (CC)	18	6		L11		
	4		DO (CC)	18	6		L12		



2-L25	L2 1/2"x2 1/2"x4 x 26'-6 (CVN)
4-L29	L3x2 1/2"x4 x 26'-6
2-L17	L3 1/2"x2 1/2"x4 x 13'-6
4-L18	L3x2 1/2"x4 x 19'-10
4-L31	L3x2 1/2"x4 x 19'-10
8-L7	L2 1/2"x2 1/2"x4 x 18'-6
4-L14	L2 1/2"x2 1/2"x4 x 18'-6 (CVN)
4-L20	L3x2 1/2"x4 x 26'-6
8-L10	L3 1/2"x2 1/2"x4 x 18'-6
8-L11	DO 3 (CC) x 18'-6
4-L12	DO x 18'-6 (CVN)

Structures Copy

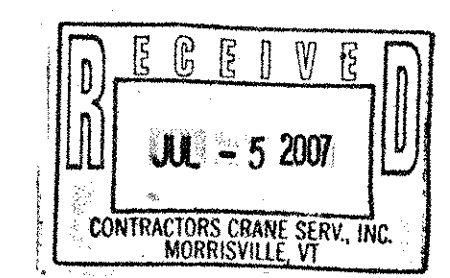
PAY ITEM 506.50 - U.N.

OUT FOR APPROVAL	6-7-07
OUT FOR APPROVAL	6-20-07
ISSUED TO SHOP	
FIELD & OFFICE	

REV.	REMARKS	DATE	DWN	CHK	APP	Q.A.	NO.	DIA.	LGT	TYPE	WASHER
PROJECT NO. BHO-BTN 2005 (1) STATE PROJECT NO.											
MATERIAL: AASHTO M270-68SD ELECTRODES: SEE PROC. HOLES: 1/8" Ø SHOP BOLTS: 3/4" Ø SURFACE PREP. & PAINT: PRIMER ONLY 4325-GALV.											

DESCRIPTION: STRUCTURAL DETAILS	DRAWN BY: JPF	DATE: 6-07
JOB: BRIDGE IMPROVEMENTS	CHKD BY: EJ	
NEW HAVEN & WEYBRIDGE, VT.	APPROV BY:	
CUSTOMER: CCS	Q.A.	
CASCO BAY STEEL STRUCTURES, INC.	JOB NO. 329	DRG. NO. 51
75 SPRING HILL ROAD SACO, MAINE 04072	PHONE (207) 282-7360	FAX (207) 282-1179

RECEIVED  
 JUL 09 2007  
 BY: GPN DATE 7/11/07



CCS Constructors LLC  
 138 Munson Avenue  
 Morrisville, VT 05661  
 Ph: 802-888-7701 F: 802-888-4746