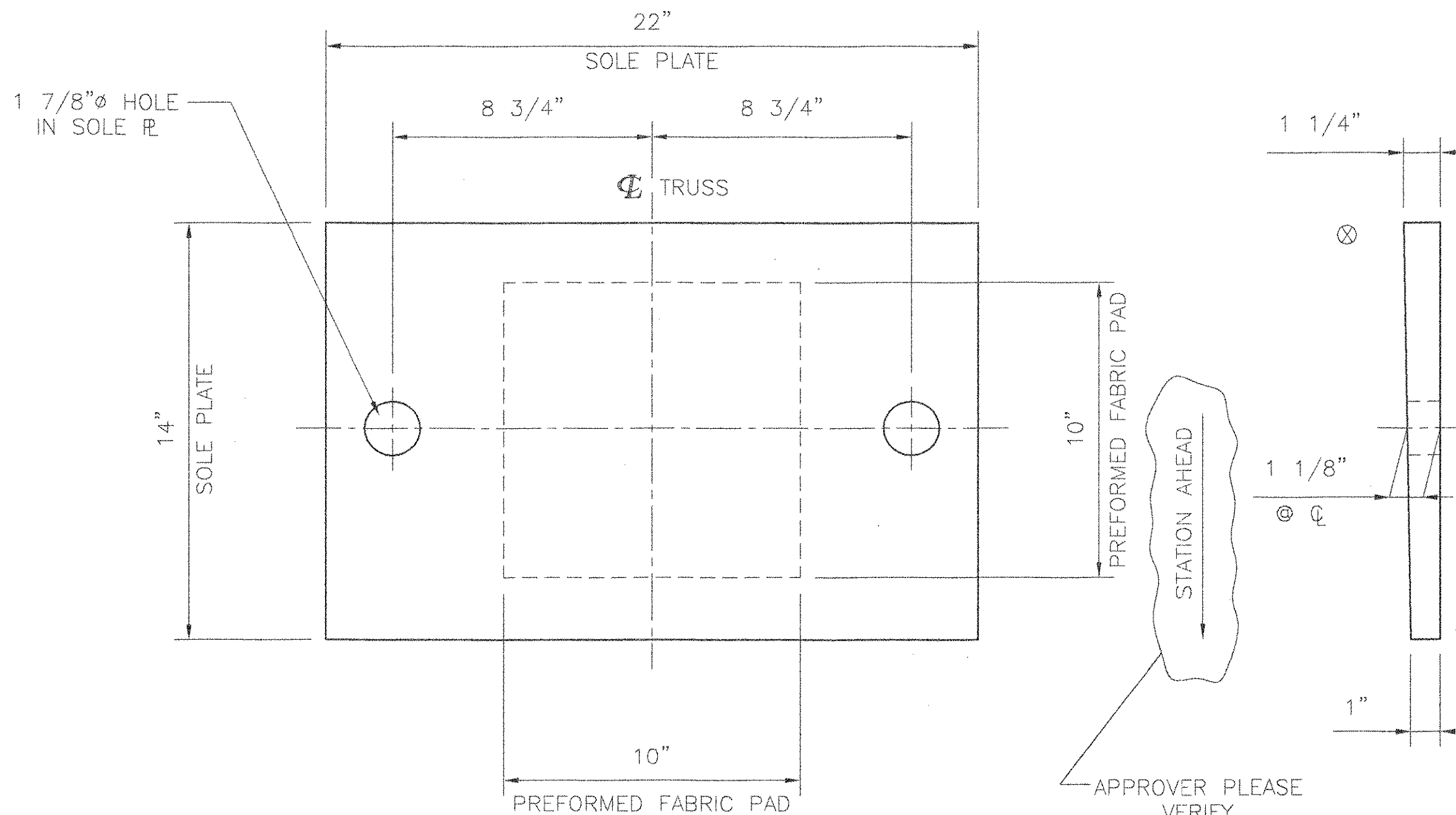
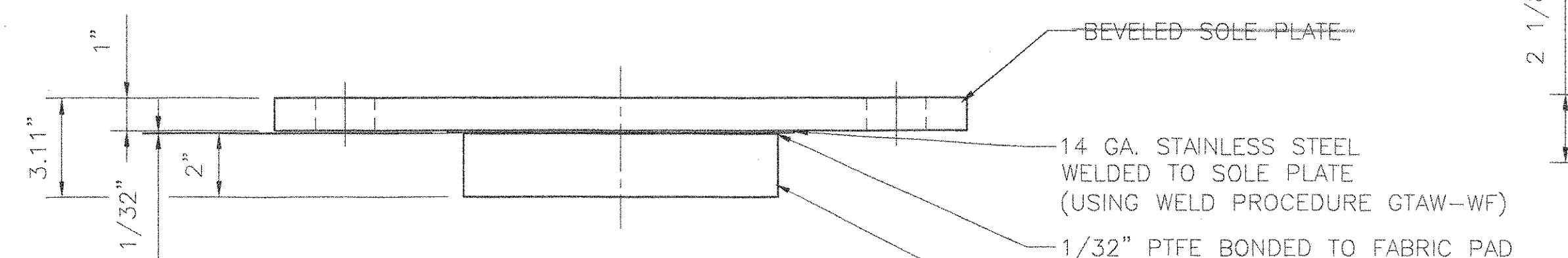


PLAN

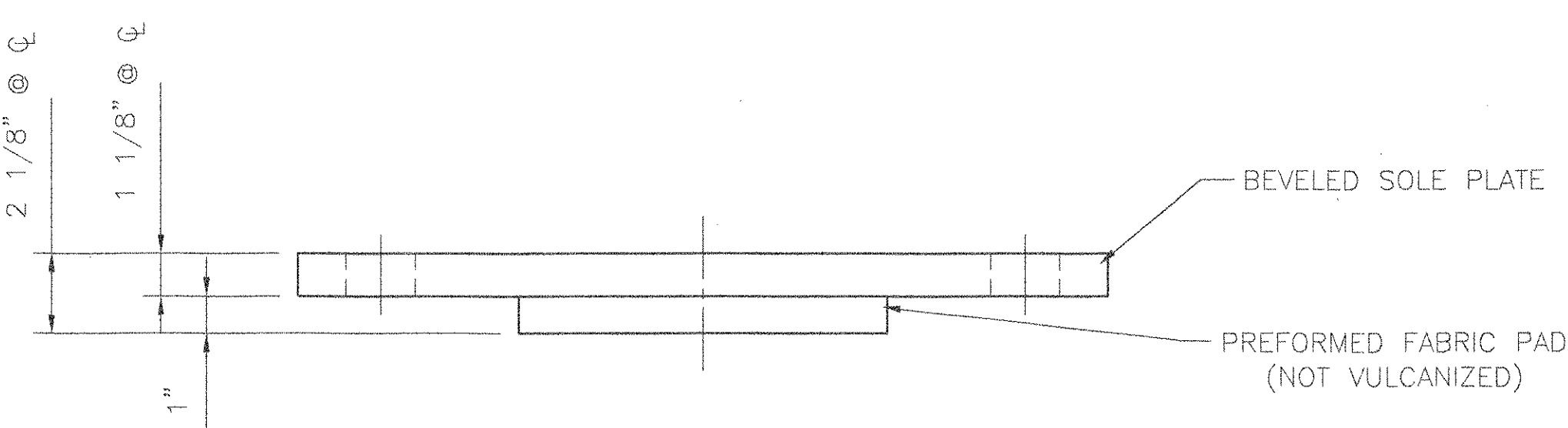


PLAN

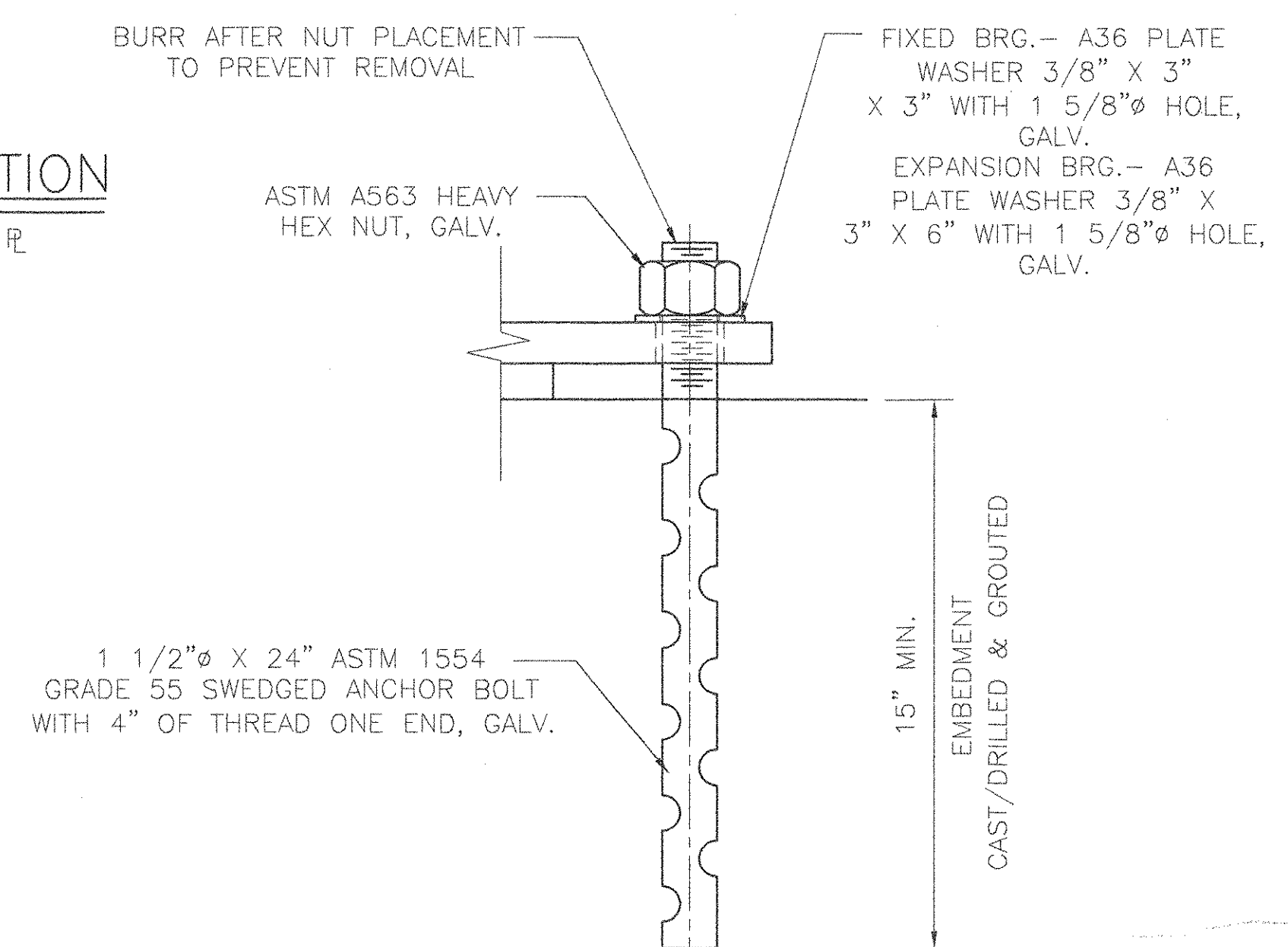
SIDE ELEVATION



FRONT ELEVATION



FRONT ELEVATION



ANCHOR BOLT DETAIL

EXPANSION PREFORMED FABRIC PAD BEARING

LOCATION: ABUTMENT 1
QUANTITY: 2

FIXED PREFORMED FABRIC PAD BEARING

LOCATION: ABUTMENT 2
QUANTITY: 2

BEARING NOTES

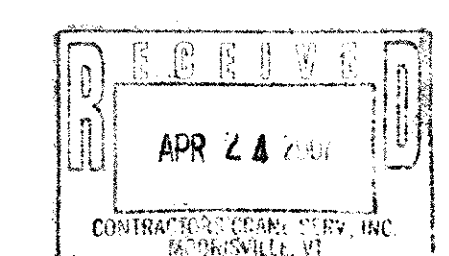
- ALL MATERIALS USED IN THE FABRICATION OF THESE BEARINGS SHALL BE MADE IN THE U.S.A.
- BEARINGS ARE TO BE SHIPPED AS COMPLETE UNITS, STEEL BANDED, AND SHALL BE WRAPPED TO PROTECT FROM MOISTURE AND DIRT DURING TRANSIT AND STORAGE.
- LOCATION OF FABRICATION PLANT - 70 SOUTH STREET WALPOLE, MA 02081
- COSMEC, INC. REPRESENTATIVE - MR. MATT McANDREWS (508) 668-6600
- BEARINGS SHALL BE STORED IN A CLEAN, DRY, LEVEL UPRIGHT POSITION.
- ALL EDGES OF STEEL PLATES SHALL HAVE 1/16" MINIMUM RADIUS.
- ⊗ MARKS THE THICK END OF BEVELED PLATE.
- A. ALLOWABLE BEARING PRESSURE ON CONCRETE = 1,000 P.S.I.
B. MINIMUM ALLOWABLE DESIGN ROTATION = 0.015 RADIANS.
C. HORIZONTAL CAPACITY SHALL BE A MINIMUM OF 10% OF THE VERTICAL LOAD.
D. DESIGN LOAD PER BEARING = 82 KIPS (DEAD LOAD + LIVE LOAD).

MATERIALS

STEEL - ASTM A709 GR. 50 ZINC METALLIZED AND SEALED.
STAINLESS STEEL - ASTM A.240 TYPE 304, WITH 10 RMS FINISH OR LESS ON SLIDING SURFACE
PREFORMED FABRIC PAD - AASHTO DIV. II SPEC. 18.4.9.1
PTFE - ASTM D4894 VIRGIN UNFILLED
ANCHOR BOLTS, NUTS & WASHERS - SEE DETAIL
ALL BEARINGS DEVICES SHALL BE METALIZED AS PER SUBSECTIONS 531.04(b) AND 506.15(b). BEARINGS SHALL BE SEALED WITH AN APPROVED SEALER AS SPECIFIED IN STANDARD SPEC. SUBSECTION 506.15(b). AREAS OF METALIZING DAMAGED BY FIELD WELDING OR HANDLING SHALL BE PAINTED WITH AN APPROVED SEALANT IN ACCORDANCE WITH STANDARD SPEC. SUBSECTION 708.02(d).
512.08 (F)

RECEIVED
APR 25 2007
RESUBMIT APPROVED BY *A. McAndrews*
BY *gaw* DATE 5/3/07

Structures copy



COSMEC Constructors LLC
138 Munson Avenue
Morrisville, VT 05661
Ph: 802-888-7701 f: 802-888-4746

STATE OF VERMONT
AGENCY OF TRANSPORTATION
PROJECT NO. BHO-BTN 2005 (1)
RTE. NO. TH 7/11, CL 3 BRIDGE NO. 26
TOWNS OF NEW HAVEN & WEYBRIDGE
ADDISON COUNTY

COSMEC, INC.		70 SOUTH STREET WALPOLE, MA 02081	
SCALE: 1/4"=1"	DRAWN BY: MRR	CHECKED BY: MCM	
	DATE: 4/19/07	DATE: 4/20/07	
COSMEC FABRIC PAD BEARINGS			
CUSTOMER: CCS CONSTRUCTORS	S.D. NUMBER: 60734	DRAWING NUMBER: 5234	REV.

REV.	BY:	DATE	OK'D BY:	DATE